



**Prevena Restor™**  
Postoperative Recovery



# Rethink recovery in plastic surgery.

Now, you can do more to support your patients and give them the aesthetic and physical outcomes they deserve.

# Recognizing the risks of plastic surgery.

You're confident in the OR and can help give patients peace of mind. However, that confidence can be lost when your patient is discharged from the OR for recovery. After discharge, there can be multiple concerns, including swelling, infections and improper tissue integration. Aesthetic outcomes are top of mind for both you and your patient.

## After mastectomy or breast reconstruction:

**20.5%** — Infection rate<sup>1</sup>

**10%** — SSI rate<sup>2</sup>

**8%** — Skin necrosis rate<sup>3</sup>

## After abdominal surgeries:

Perfusion-related complications like infection, seroma, hematoma and necrosis are also common:

**10–45%**

Complication rate in abdominoplasty procedures.<sup>4</sup>

**24.7%**

Complication rate with deep inferior epigastric perforators (DIEP) flap surgery.<sup>5</sup>

## Surgeons face unique pressures:

- Risk that aesthetic and clinical outcomes will be judged negatively by patients
- Risk that seromas, hematomas and/or infections will result in the need for additional procedures
- Risk that anxious patients will add a layer of scrutiny to the surgical process

# Rethink recovery with 3M™ Prevena Restor™ Therapy.

**Provide protection and reduce edema by managing the incision and surrounding soft tissue with Prevena Restor Therapy.**

Provides 14 days of continuous -125 mmHg negative pressure therapy with expanded coverage for the incision and surrounding soft tissue.

Prevena Restor Therapy offers patients comprehensive protection with dressings designed for a variety of anatomical locations. Each dressing, combined with negative pressure, provides stabilization to the surgical site and creates a strong barrier to external contaminants, helping to reduce the risk of complications.<sup>6-8</sup>

## 3M™ Prevena Restor™ Dressings



3M™ Prevena Restor™  
Arthro•Form™ Dressing



3M™ Prevena Restor™  
Bella•Form™ Dressing

**Now, you can extend your control after discharge, support patient compliance with rehab protocols, and set the stage for an optimized recovery.**

# Optimize care with 3M™ Prevena Restor™ Therapy.



## Extended Therapy Time

Up to 14 days of therapy.



## Expanded Coverage Area\*

Larger dressing delivers therapy to the incision *and* surrounding soft tissue envelope.



## Precision Design

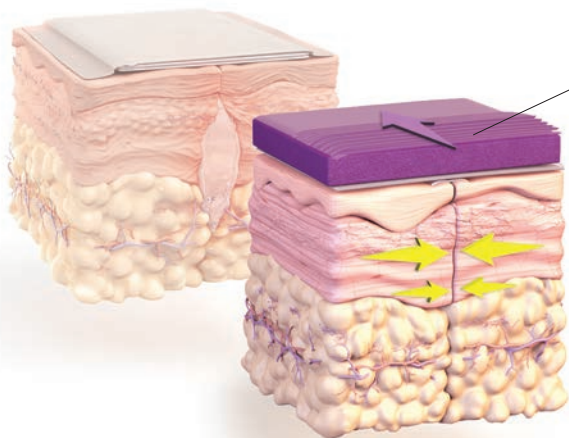
Seamlessly conforms to the patient.



## Easy to Apply

Simply peel and place the form-fitting dressing.

## Prevena Restor Therapy is built on the proven technology of the original 3M™ Prevena™ Therapy.



### Prevena Therapy science and mechanism of action.

- Delivers continuous negative pressure therapy (-125 mmHg) to the incision site (up to 7 days)
- Helps hold incision edges together<sup>6</sup>
- Removes fluid and infectious materials<sup>7</sup>
- Creates a barrier to external contaminants<sup>3</sup>
- Reduces edema<sup>8</sup>

### 3M™ Prevena Restor™ Incision Management System indication statement.

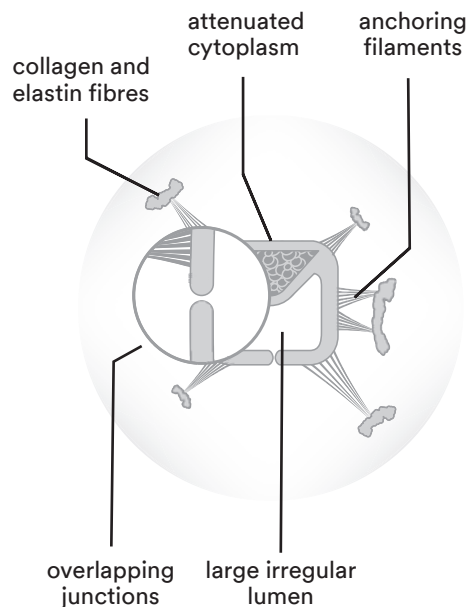
The 3M™ Prevena Restor™ Incision Management System is intended to manage the environment of closed surgical incisions and surrounding intact skin in patients at risk for developing post-operative complications, such as infection, by maintaining a closed environment via the application of a negative pressure wound therapy system to the incision. The 3M™ Prevena™ Dressing skin interface layer with silver reduces microbial colonization in the fabric.

\*Compared with 3M™ Prevena™ Dressings.

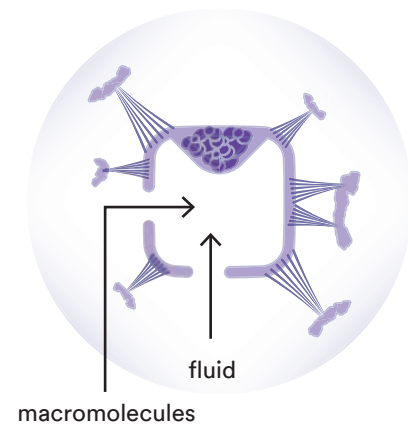
# How 3M™ Prevena™ Therapy reduces edema.

The effects of negative pressure applied to intact skin via Prevena Therapy were evaluated using finite element analysis (FEA).<sup>12</sup>

## Closed Terminal Lymphatic Pore (overlapping endothelial cells)<sup>13</sup>



## Open Terminal Lymphatic Pore (separated endothelial cells)<sup>13</sup>



Based on the analysis, it is hypothesized that volumetric expansion may help:<sup>12</sup>

- 1** Expand the tissue beneath the dressing, pulling the tissue open.
- 2** Lower local interstitial fluid pressure.
- 3** Open lymphatics to allow fluid clearance.

**Tissue beneath the dressing is expanded, not compressed.**



# 3M™ Prevena Restor™ Therapy: Real-world experience.

Contact your local 3M representative or go to [3M.ca/PrevenaRestor](http://3M.ca/PrevenaRestor) for more real-world Prevena Restor Therapy case studies.



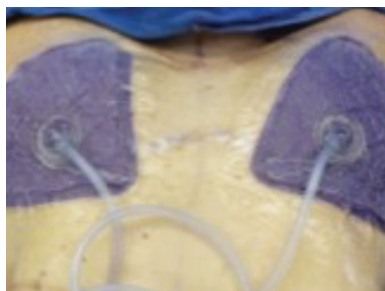
## Complex Lower Extremity Wound

*Photo courtesy of Allen Gabriel, MD, FACS; Global Surgical Consulting; Camas, WA.*



## Double Mastectomy

*Photo courtesy of Allen Gabriel, MD, FACS; Global Surgical Consulting; Camas, WA.*



## Oncoplastic Bilateral Breast Reconstruction

*Photo courtesy of Abhishek Chatterjee, MD, MBA, Tufts Medical Center, Boston, MA.*

**Prevena Restor Therapy  
can be applied to a  
variety of procedures and  
anatomical locations:**



**Breast**



**Abdomen**



**Soft Tissue  
Defects**



**Flaps**

As with any case study, the results and outcomes should not be interpreted as a guarantee or warranty of similar results. Individual results may vary depending on the patient's circumstances and condition.

# 3M™ Prevena Restor™ Therapy — your comprehensive approach to recovery.

Rethink recovery with Prevena Restor Therapy.



**Helps Protect  
the Surgical Site**



**Helps Reduce  
Edema**



**Helps Optimize  
the Healing  
Environment**



**Helps Enhance  
the Recovery  
Experience**



**Contact your local representative to  
learn more about Prevena Restor Therapy.**



Product	Description	Unit of Measure	Pack Qty.
<b>PRE5001</b>	3M™ Prevena Restor™ Arthro●Form™ System Kit	33 cm x 30 cm	1
<b>PRE5101</b>	3M™ Prevena Restor™ Arthro●Form™ System Kit	46 cm x 30 cm	1
<b>PRE5055</b>	3M™ Prevena Restor™ Arthro●Form™ Dressing	33 cm x 30 cm	5
<b>PRE5155</b>	3M™ Prevena Restor™ Arthro●Form™ Dressing	46 cm x 30 cm	5
<b>PRE5221</b>	3M™ Prevena Restor™ Bella●Form™ System Kit	21 cm x 19 cm	1
<b>PRE5321</b>	3M™ Prevena Restor™ Bella●Form™ System Kit	24 cm x 22 cm	1
<b>PRE5421</b>	3M™ Prevena Restor™ Bella●Form™ System Kit	29 cm x 27 cm	1
<b>PRE5255</b>	3M™ Prevena Restor™ Bella●Form™ Dressing	21 cm x 19 cm	5
<b>PRE5355</b>	3M™ Prevena Restor™ Bella●Form™ Dressing	24 cm x 22 cm	5
<b>PRE5455</b>	3M™ Prevena Restor™ Bella●Form™ Dressing	29 cm x 27 cm	5

**References:** **1.** Jagji R, Jiang J, Momoh AO, *et al.* Complications After Mastectomy and Immediate Breast Reconstruction for Breast Cancer: A Claims-Based Analysis. *Ann Surg.* 2016;263(2):219–27. doi: 10.1097/SLA.0000000000001177. PMID: 25876011; PMCID: PMC4824182. **2.** Bennett KG, Qi J, Kim HM, Hamill JB, Pusic AL, Wilkins EG. Comparison of 2-Year Complication Rates Among Common Techniques for Postmastectomy Breast Reconstruction. *JAMA Surg.* 2018;153(10):901–908. doi:10.1001/jamasurg.2018.1687. **3.** Sue GR, Long C, Lee GK. Management of Mastectomy Skin Necrosis in Implant Based Breast Reconstruction. *Ann Plast Surg.* 2017;78(5 Suppl 4):S208–S211. doi: 10.1097/SAP.0000000000001045. PMID: 28301366. **4.** Bullocks J, Basu CB, Hsu P, Singer R. Prevention of Hematomas and Seromas. *Semin Plast Surg.* 2006;20(4):233–240. doi:10.1055/s-2006-951581. **5.** Krishnan NM, Purnell C, Nahabedian MY, *et al.* The cost effectiveness of the DIEP flap relative to the muscle-sparing TRAM flap in postmastectomy breast reconstruction. *Plast Reconstr Surg.* 2015;135(4):948–958. doi: 10.1097/PRS.0000000000001125. PMID: 25811560. **6.** Payne J. Evaluation of the resistance of the Prevena™ incision dressing top fila™ to viral penetration. San Antonio, TX: Kinetic Concepts, Inc.; June 19, 2009. Report No.: 0000021109. **7.** Suh H, Hong JP. One stage allogenic acellular dermal matrices (ADM) and split-thickness skin graft with negative pressure wound therapy. In: Gore M, ed. *Skin Grafts*. Intech Open, 2013. doi:10.5772/53304. **8.** Hall WW, Jeffords K, Hauck RM, Banducci DR, Graham WP 3rd. Negative-pressure dressings as a bolster for skin grafts. *Ann Plast Surg.* 1998 May;40(5):453–457. doi: 10.1097/0000637-199805000-00001. **9.** Wilkes RP, Kilpadi DV, Zhao Y, Kazala R, McNulty A. Closed incision management with negative pressure wound therapy (CIM): biomechanics. *Surg Innov.* 2012 Mar;19(1):67–75. doi:10.1177/1553350611414920. **10.** Kilpadi DV, Cunningham MR. Evaluation of closed incision management with negative pressure wound therapy (CIM): hematoma/seroma and involvement of the lymphatic system. *Wound Repair Regen.* 2011;19(5):588–596. doi:10.1111/j.1524-475X.2011.00714.x. **11.** Glaser DA, Farnsworth CL, Varley ES, *et al.* Negative pressure therapy for closed spine incisions: a pilot study. *Wounds.* 2012 Nov;24(11):308–316. **12.** Balakrishna H. Negative Pressure Therapy on Intact Skin: Poroelastic Finite Element Modeling of Interstitial Fluid Pressures. 25 June 2019. **13.** Skobe M, Detmar M. Structure, function, and molecular control of the skin lymphatic system. *J Invest Dermatol Symp Proc.* 2000;5(1):14–19. doi:10.1046/j.1087-0024.2000.00001.x.

Available in Canada from your authorized 3M+KCI distributors.



KCI USA Inc., a 3M Company.

KCI owned and operated by 3M Company.

KCI Medical Canada Inc. and KCI USA Inc.

**KCI Medical Canada Inc.**  
75 Courtneypark Dr W, Unit 4  
Mississauga, ON  
L5W 0E3

**KCI USA, Inc.**  
12930 IH 10 West  
San Antonio, TX  
78249

The data referenced in this brochure was derived from studies using the 3M family of negative pressure technology, but not specifically 3M™ Prevena Restor™ Therapy.

**NOTE: Specific indications, limitations, contraindications, warnings, precautions, and safety information exist for these products and therapies. Please consult a clinician and product Instructions For Use prior to application. This material is intended for healthcare professionals only.**

3M, Prevena, Prevena Restor, ArthroForm, and BellaForm are trademarks of 3M. Used under license in Canada. © 2022, 3M. All rights reserved. 2203-23528E