

Filtek™ Z250 XT

Nano Hybrid Universal Restorative



• 12 popular shades



A better nanohybrid made simple to use.

What is a nanohybrid?

Nanohybrid composites offer a reliable solution for a wide range of restorative needs. They contain a broad range of particle sizes for higher filler loading, which leads to strength that's similar to a traditional hybrid. The addition of nano-sized particles gives the restoration better wear resistance and a surface that is easier to polish for good esthetic results.

Summary of advantages

- Excellent handling
- Predictable esthetics
- High strength
- Good wear resistance
- Easy to polish
- Indicated for all direct restorations
- 12 popular shades

A new nanohybrid that's even better at meeting daily restorative needs.

As the innovator of dental nanofiller technology and a world leader in dental restoratives, 3M ESPE used its expertise to create an all-purpose **nanohybrid**.

Building on the success of Filtek™ Z250 Universal Restorative, we incorporated our proven nanofiller technology to improve physical properties and polish. The next generation—Filtek™ Z250 XT Nano Hybrid Universal Restorative—offers a great value as a versatile restorative you'll use every day.

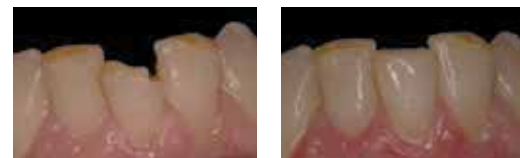
Filtek™ Z250 XT Nano Hybrid restorative offers the handling dentists prefer.

For decades, 3M ESPE has worked to continually improve and perfect handling from the dentist's point of view. Filtek Z250 XT restorative:

- Doesn't stick to instruments so is easy to adapt
- Doesn't slump, yet will blend and feather
- Is easy to sculpt and holds its shape prior to cure

Easy to use in all classes of direct restorations.

Our nanohybrid is designed to be easy to use, whether creating anterior or posterior restorations.



Photos courtesy of Dr Robert C. Margeas, DDS.



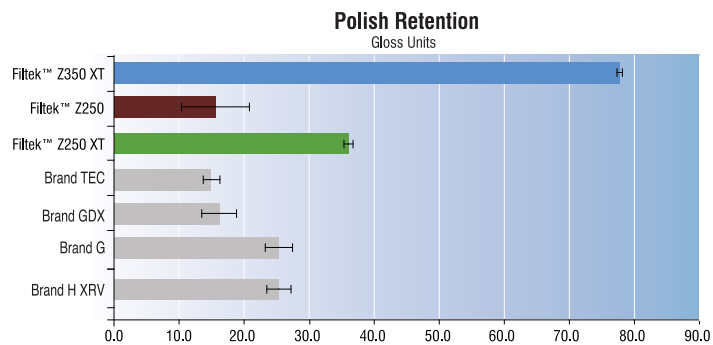
Photos courtesy of Jeff T. Blank, DMD.

With 12 popular shades that match the Vita® Classical Shade Guide, you'll find it easy to match the patient's natural teeth. Filtek Z250 XT restorative is formulated for strong performance, wear resistance, and is easy to polish—so you can count on predictable, reliable, patient-pleasing results.

With **Filtek™ Z250 XT** restorative, you can satisfy patient expectations for a natural-looking, high quality restoration.

Predictable Esthetics

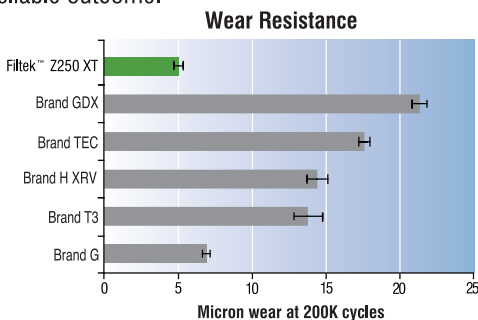
Filtek™ Z250 XT Nano Hybrid restorative was specifically designed to yield a composite that is easy to polish and easy to achieve a good esthetic result.



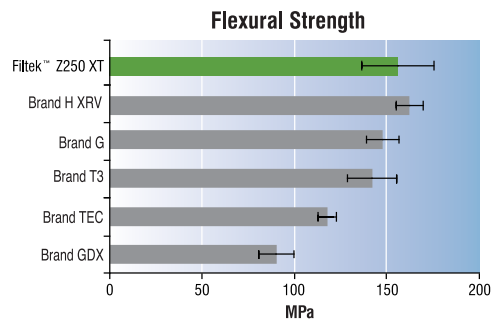
The data above shows the final polish retention (gloss) after 6,000 toothbrush cycles.

Strong & Reliable Performance

Filtek™ Z250 XT Nano Hybrid restorative is formulated with a broad range of particle sizes to allow a higher filler loading. The result is high flexural strength, diametral tensile strength and wear resistance. When you place Filtek Z250 XT restorative, you can trust in a reliable outcome.



In a 3-body wear test, Filtek™ Z250 XT Nano Hybrid Universal Restorative showed better wear resistance than other nanohybrid composites. (The lowest number indicates least wear.)
Source: 3M ESPE internal data



In an in vitro study, Filtek™ Z250 XT Nano Hybrid Universal Restorative showed better flexural strength than other nanohybrid composites.
Source: 3M ESPE internal data

Ordering Information

Item #	Product Information
1470LK	Filtek Z250 XT Kit Contents: <ul style="list-style-type: none"> ● A2 syringe for Z250 XT nano hybrid - 2 syringes ● A3 syringe for Z250 XT nano hybrid - 3 syringes ● Single Bond Universal Vial 5mls - 1 bottle ● Applicator handles and disposable brush tips



Product Information	Item Number
Shade	Syringe
A1	1470 A1
A2	1470 A2
A3	1470 A3
A3.5	1470 A3.5
A4	1470 A4
B1	1470 B1
B2	1470 B2
B3	1470 B3
C2	1470 C2
D3	1470 D3
OA2	1470 OA2
OA3	1470 OA3



Syringe Shade Refills include 1 – 3g syringes.



3M Malaysia Sdn. Bhd. (7251 V)
Level 8, Block F, Oasis Square
No. 2, Jalan PJU 1A/7A, Ara Damansara
47301 Petaling Jaya, Selangor, Malaysia
Tel: +603 7884 2888
Fax: +603 7884 2902
www.3M.com.my

www.3M.com.my

For Healthcare Professionals only.
Registered under Act 737.

Medical Device Registration Number:
GB52961456917