

**3M**

**Filtek™**

**Z350 XT  
Universal Restorative**



**Dentists everywhere  
love using it  
anywhere.**



# 600 million reasons you can be confident using it anywhere.

Bring unsurpassed esthetics and outstanding strength to every restoration—anterior or posterior—with 3M™ Filtek™ Z350 XT Universal Restorative.

As you'd expect from the global leader in esthetic and restorative technologies, 3M's TRUE nanotechnology provides superior wear resistance and gloss retention ... so your restorations will last and look beautiful, too.

That's why dentists around the world have made it their composite of choice for **more than 600 million restorations\*** ... and counting.



## 3M™ Filtek™ Z350 XT Universal Restorative

## Simplify your practice with the composite that does it all.

Any place: anterior or posterior. Any class.



## A versatile choice is a smart choice.

### Unsurpassed esthetics

- Excellent polish retention
- Wide range of shades and opacities
- Natural-looking fluorescence

### Simple to use

- Exceptional handling
- Natural-looking body shades for a simple, single-shade technique
- Capsules and syringes are color coded by opacity

### Durable in anterior and posterior use

- Excellent wear resistance
- Outstanding strength
- High radiopacity

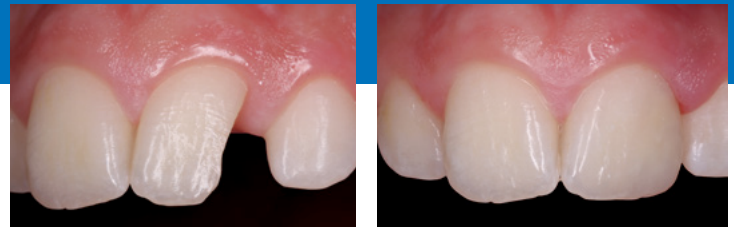
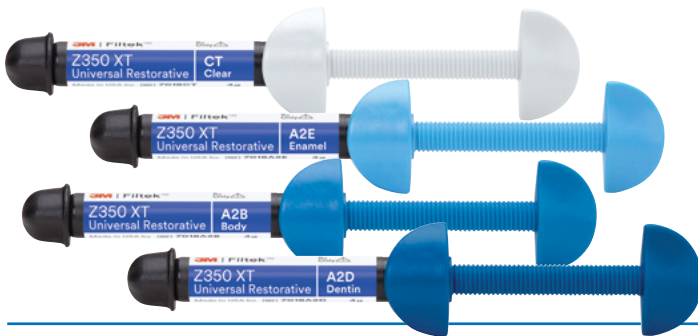
\*3M™ Filtek™ Supreme Universal Restorative line

# Always beautiful

## When you want to elevate your artistry, here's your dream palette.

When it comes to beautiful, natural-looking results, there's nothing like 3M™ Filtek™ Z350 XT Universal Restorative. Whether you specialize in esthetic dentistry or create esthetic restorations in specific cases, we have your dream palette.

Our **36 beautiful shades and 4 opacities** allow you to match any patient's dentition and create restorations that are virtually undetectable using a multi-shade layering technique.

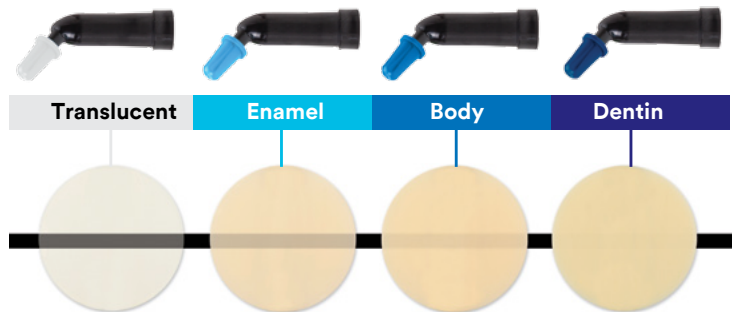


Anterior restoration created using three shades (A3D, A3.5B, A1E) of 3M™ Filtek™ Z350 XT Universal Restorative.

Photo courtesy of Dr. Gabriel Krastl, Department of Periodontology, Endodontics and Cariology, University of Basel, Switzerland.

## Four Opacities

Translucent, Enamel, Body and Dentin designations refer to differences in opacity.



Syringes and capsules are color coded by opacity—Translucent, Enamel, Body and Dentin—and bold lettering makes shades easy to identify.

## Unsurpassed polish retention—a difference you can see.

The initial gloss of most restoratives can be very impressive, but you want a polish that lasts. Thanks to 3M's TRUE nanofiller technology, Filtek Z350 XT restorative polishes easily and retains its natural gloss better than other composites—even a microfill.



Polish you can see. Side-by-side photos compare the polish retention of leading restoratives to that of 3M™ Filtek™ Z350 XT Universal Restorative after 6,000 cycles of simulated toothbrushing.



# Beautifully simple

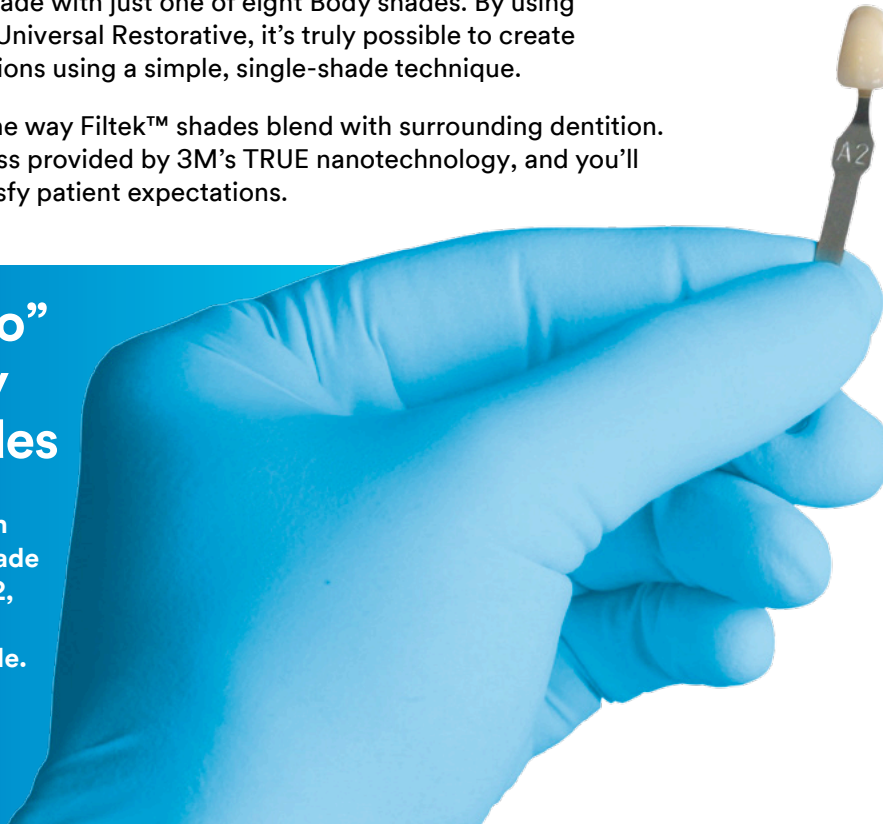
## When you want a simple solution, you'll love this.

Most restorations are made with just one of eight Body shades. By using 3M™ Filtek™ Z350 XT Universal Restorative, it's truly possible to create natural-looking restorations using a simple, single-shade technique.

Dentists say they love the way Filtek™ shades blend with surrounding dentition. Add to that the high gloss provided by 3M's TRUE nanotechnology, and you'll find it really easy to satisfy patient expectations.

### 8 "Go-to" Body Shades

Filtek™ shades match the VITA classical Shade Guide. An A2 is an A2, so esthetics are beautifully predictable.



## Dentists rate the handling as "ideal."

It's easier to achieve the restorative result you want when the composite handles well. For example, the improved handling of our Translucent shades makes it easier to create lifelike incisal edges.

All of our shades offer excellent handling. In fact, in a field study,\* dentists rated Filtek Z350 XT restorative as "ideal" on viscosity, stickiness, flow and ability to hold its shape.

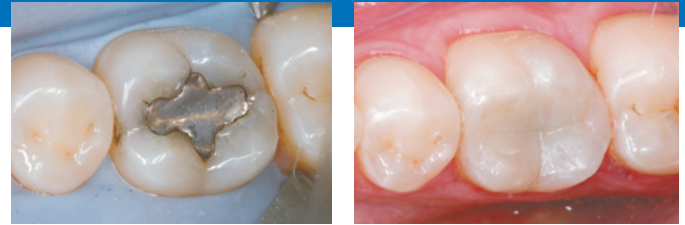
\*3M internal data



# Simply durable ... anywhere

## Beautiful ... yes. And it's strong enough to use anywhere.

Think how much more efficient your day would be if you didn't have to decide which composite to use in each clinical situation. Our TRUE nanotechnology gives 3M™ Filtek™ Z350 XT Universal Restorative remarkable strength for anterior and posterior use.



Amalgam filling replaced by 3M™ Filtek™ Z350 XT Universal Restorative in a posterior restoration.

Photo courtesy of Dr. Grant Chyz.

## Excellent wear resistance

The lower the wear rate of a composite material, the better its wear resistance. In an in vitro 3-body wear test, Filtek Z350 XT restorative had the lowest wear rate of all leading composites tested.

Source: 3M internal data



3-Body Wear

## Normalized wear rate

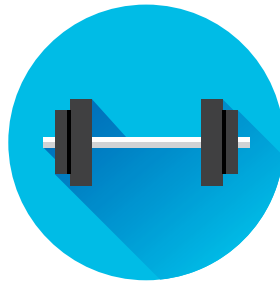
<b>3M™ Filtek™ Z350 XT Universal Restorative</b> .....	<b>1.0</b>
Grandio®SO .....	1.4
EsthetX® HD.....	1.6
TPH Spectra® HV .....	2.6
Tetric EvoCeram®.....	3.4
Herculite™ Ultra .....	2.5

Over 200,000 cycles

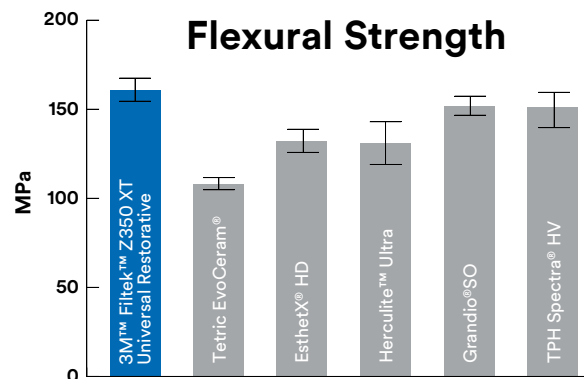
## Outstanding strength

In a test comparing leading dental composites, the flexural strength of Filtek Z350 XT restorative proved better than that of EsthetX® HD, Herculite™ Ultra and Tetric EvoCeram®, and comparable to other composites tested.

Source: 3M internal data



Flexural Strength



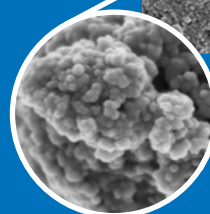
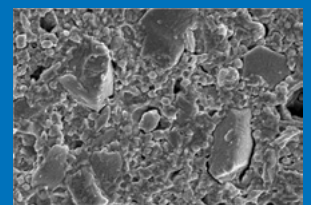
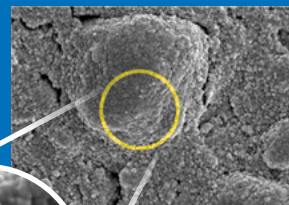
## 3M's TRUE nanofiller technology leads to outstanding polish and strength.

The significant distinction between 3M™ Filtek™ Z350 XT Universal Restorative and micro- and nanohybrids is that our nanoparticles are uniquely formed in the nano size range and are not the result of a grinding process. Some nanoparticles are fused into nanoclusters, which shear at a rate similar to the wear of the surrounding resin matrix during abrasion, such as toothbrush abrasion. That's why restorations made from Filtek Z350 XT restorative maintain a smooth surface gloss for superb esthetics.

The nanoclusters have a similar size range as fillers found in the hybrid composites and provide for high filler loading. This results in excellent physical properties and wear resistance that are ideal for posterior restorations.

3M™ Filtek™ Z350 XT Universal Restorative nanocluster

Leading competitive composite



100K magnification of nanocluster

SEM photos courtesy of Dr. J. Perdigo, University of Minnesota.

You may already know the benefits of working with 3M™ Filtek™ Z350 XT Universal Restorative. What you may not know is how easy it is to move from a single-shade to a dual-shade technique. The 3M™ Shade Selector Wheel simplifies the selection process and serves as a guide for placing one to four shades of composite. It is included in every dual-shade kit and professional kit.



## Ordering Information

Although Filtek Z350 XT restorative is available in 36 shades and opacities, the **8 Body shades** highlighted below will meet the majority of your needs for creating natural-looking, single-shade restorations.

### REFILLS—3M™ Filtek™ Z350 XT Universal Restorative

Refill	Item #	Item #
BODY SHADES	SYRINGE	CAPSULE
A1B	7018A1B	7019A1B
A2B	7018A2B	7019A2B
A3B	7018A3B	7019A3B
A3.5B	7018A3.5B	7019A3.5B
B1B	7018B1B	7019B1B
B2B	7018B2B	7019B2B
C1B	7018C1B	7019C1B
C2B	7018C2B	7019C2B
A4B	7018A4B	7019A4B
A6B	7018A6B	7019A6B
B3B	7018B3B	7019B3B
B5B	7018B5B	7019B5B
C3B	7018C3B	7019C3B
D2B	7018D2B	7019D2B
D3B	7018D3B	7019D3B
White	7018WB	7019WB
Extra White	7018XWB	7019XWB
DENTIN SHADES	SYRINGE	CAPSULE
A1D	7018A1D	7019A1D
A2D	7018A2D	7019A2D
A3D	7018A3D	7019A3D
A4D	7018A4D	7019A4D
B3D	7018B3D	7019B3D
C4D	7018C4D	7019C4D
White	7018WD	7019WD
ENAMEL SHADES	SYRINGE	CAPSULE
A1E	7018A1E	7019A1E
A2E	7018A2E	7019A2E
A3E	7018A3E	7019A3E
B1E	7018B1E	7019B1E
B2E	7018B2E	7019B2E
D2E	7018D2E	7019D2E
White	7018WE	7019WE
Extra White	7018XWE	7019XWE
TRANSLUCENT SHADES	SYRINGE	CAPSULE
Clear	7018CT	7019CT
Blue	7018BT	7019BT
Gray	7018GT	7019GT
Amber	7018AT	7019AT

The 8  
"Go-To"  
Body  
Shades

**SYRINGE SHADE REFILLS:** Include 1 – 4g syringe, Instructions For Use

**CAPSULE SHADE REFILLS:** Dentin, Enamel and Translucent shade refills include 10 – 0.2g capsules; Body Shade Refills include 20 – 0.2g capsules; Instructions for Use



3M Malaysia Sdn Bhd (7251 V)  
Level 8, Block F, Oasis Square  
No. 2, Jalan PJU 1A/7A, Ara Damansara  
47301 Petaling Jaya, Selangor, Malaysia  
Tel: +603 7884 2888  
Fax: +603 7884 2902  
www.3M.com.my

www.3M.com.my

For Healthcare Professionals only.  
Registered under Act 737.

Medical Device Registration Number:  
GB35649394017