



Immediate Action Required

Inspection Notice



Products:

Select 3M™ Protecta® Self-Retracting Lifelines

Impacted Dates:

September 2021

→ **3M Fall Protection is issuing a “Stop Use and Inspect” notice for select models of 3M™ Protecta® Self-Retracting Lifelines.**



3M™ Fall Protection has identified a potential manufacturing issue with a limited number of 3M™ Protecta® Self-Retracting Lifelines (SRL) with galvanized or stainless-steel lifelines produced in September 2021. There have been no reports of injuries or accidents associated with this issue. This manufacturing issue could result in the SRL not engaging properly but can be easily detected through the pre-use inspection as specified in the Instruction for Use (IFU) document. Affected part numbers can be found in Appendix 1.

End-Users

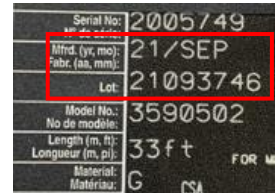
Please follow the steps listed below.

Step 1: Locate the label on the SRL to identify the manufacture date and lot number (see picture to the right). If the SRL has a manufacture date of **21/SEP** (September 2021) and lot number **21093746**, continue to step 2. (Please note that regardless of the manufacture date, all SRLs should be inspected prior to every use and by a competent person annually as per the IFU).

Step 2: Pull the lifeline quickly to ensure that the SRL locks up. As per the IFU *“Ensure the device locks up when the lifeline is jerked sharply. Lockup should be positive with no slipping.”* If the SRL locks up properly and passes all other aspects of the pre-use inspection as defined in the IFU, the SRL is acceptable for use. If you find that your SRL does not lock up, take the Protecta® SRL out of service immediately. Please contact our Customer Service department (US: 1-833-638-2697 or 3musfpSERVICEACTION@mmm.com; CAN: 1-833-998-2243 or 3mcafpsERVICEACTION@mmm.com) and we will arrange to have the SRL inspected and repaired/replaced as per our standard warranty.

Distributors

Upon receipt of this Notice, please contact our Customer Service department for a listing of the affected Protecta® SRLs sold to you. If you have any of the affected parts in stock, you should return them to 3M Fall Protection for repair and/or replacement as per our standard warranty. Please forward this Notice to any of your customers who have purchased affected products from you and provide any assistance requested by your customers to complete the process.



If you have any questions regarding this notice, please contact the 3M Fall Protection Customer Service Team.

A copy of this notice can be found at https://www.3mcanada.ca/3m/en_ca/worker-health-safety-ca/safety-town-square/fall-protection-advisories.

US: call 1-833-638-2697 or email 3musfpSERVICEACTION@mmm.com
Canada: call 1-833-998-2243 or email 3mcafpsERVICEACTION@mmm.com

All Self-Retracting Lifelines should be inspected prior to every use and by a competent person annually, as per the Instructions for Use.

Appendix 1: Affected 3M™ Protecta® Self-Retracting Lifeline Part Numbers

Date of Manufacture: September 2021 (21/SEP)

Part Number	Description	Standard
3590500	SRL REBEL 33' GALV, PLASTIC	ANSI/OSHA
3590510	SRL REBEL 33' GALV, ALUM	ANSI/OSHA
3590514	SRL REBEL 20' GALV, ALUM	ANSI/OSHA
3590517	SRL REBEL 20' GALV, PLASTIC	ANSI/OSHA
3590540	SRL REBEL 20' GALV, L EDGE, PLASTIC	ANSI/OSHA
3590543	SRL REBEL 33' GALV, L EDGE, PLASTIC	ANSI/OSHA
3590546	SRL REBEL 50' GALV, L EDGE, PLASTIC	ANSI/OSHA
3590548	SRL REBEL 66' GALV, L EDGE, PLASTIC	ANSI/OSHA
3590550	SRL REBEL 50' GALV, PLASTIC	ANSI/OSHA
3590551	SRL REBEL 50' SS, PLASTIC	ANSI/OSHA
3590560	SRL REBEL 50' GALV, ALUM	ANSI/OSHA
3590590	SRL REBEL 66' GALV, PLASTIC	ANSI/OSHA
3590591	SRL REBEL 66' SS, PLASTIC	ANSI/OSHA
3590680	SRL REBEL 100' GALV, ALUM	ANSI/OSHA
3590521	SRL REBEL 10M GALV, PLASTIC	CE/EN
3590542	SRL REBEL 6M GALV, L EDGE, PLASTIC	CE/EN
3590610	SRL REBEL 20M GALV, PLASTIC	CE/EN
3590650	SRL REBEL 25M GALV, PLASTIC	CE/EN
3590690	SRL REBEL 30M GALV, PLASTIC	CE/EN
3790000	LOAD ARRESTOR 300KG 14M GALV	CE/EN
3590502	SRL REBEL 33' GALV, PLASTIC	CSA
3590518	SRL REBEL 20' GALV, PLASTIC	CSA
3590524	SRL REBEL 20' GALV, ALUM	CSA
3590529	SRL REBEL 20' SS, ALUM	CSA
3590541	SRL REBEL 20' GALV, L EDGE, PLASTIC	CSA
3590547	SRL REBEL 50' GALV, L EDGE, PLASTIC	CSA
3590552	SRL REBEL 50' GALV, PLASTIC	CSA
3590562	SRL REBEL 50' GALV, ALUM	CSA

3M remains committed to providing quality products and services to our customers. We apologize for any inconvenience that this situation may cause you. We appreciate your continued support of 3M Fall Protection products and services.