

Esthetic replacement of anterior class IV restorations

Clinical dentistry and photography by: Dr. Paulo Monteiro, Caparica, Portugal

About the Case:

Female patient 30 years old.

Patient was not satisfied with current anterior restorations (maxillary central incisors). Patient also expressed dissatisfaction with shade and surface texture.

Challenge:

Creating smooth and natural-looking restorations for patients who demand the highest level of esthetics can be challenging. Using materials that mimic shade and opacity of dentin and enamel is critical.

Step-by-Step:



Fig. 1: Initial situation: patient was not satisfied with current restorations.



Fig. 2: Teeth were etched after preparation using Scotchbond™ Universal Etchant.

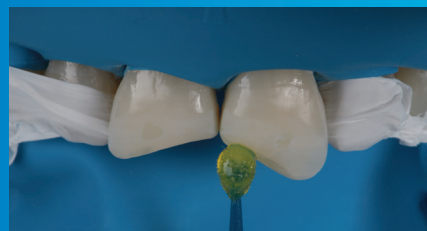


Fig. 3: Single Bond Universal Adhesive is scrubbed into the surface, air dried and light cured with Elipar™ DeepCure-S LED Curing Light.



Fig. 4: A silicone matrix was used to create the palatal wall with Filtek™ Z350 XT Universal Restorative, shade CT.



Fig. 5: The interproximal enamel layer was built with Filtek™ Ultimate Universal Restorative, shade A3E and light cured with Elipar™ DeepCure-S LED Curing Light. For the incisal halo, Filtek™ Z350 XT Flowable Restorative, shade W was used.



Fig. 6: Application of the dentin layer using Filtek™ Z350 XT Universal Restorative, shade A1D. For volume control the Misura instrument (LM Arte by Style Italiano) was used to leave a 0.5mm space for the facial enamel.

Esthetic replacement of anterior class IV restorations



Fig. 7: Creation of mamelons and application of a small portion of Filtek™ Z350 XT Universal Restorative, shade CT between the dentin layer and incisal halo to enhance translucency at the incisal edge.



Fig. 8: The final enamel layer of Filtek™ Z350 XT Universal Restorative, shade A3E was applied and light cured.



Fig. 9: Sof-Lex™ Discs are used to define the outline of the restoration and create secondary anatomy.



Fig. 10: Pre-polishing of restoration with Sof-Lex™ Pre-Polishing Spiral.



Fig. 11: Polishing with Sof-Lex™ Diamond Polishing Spiral to create a final smooth and high-gloss polish.



Fig. 12: Final restoration is very natural-looking.

The 3M Difference:

Having the right product selection for achieving various levels of esthetics is important. The 3M Esthetic Restoration Solution helps dentists achieve highly esthetics results that last.

Refer to Instructions for Use (IFU) for complete product information.



3M India Limited

WeWork Prestige Central, 3rd floor
36, Infantry Road, Bangalore - 560 001 | India

Toll Free No. 1800-425-3030
Website - www.3mindia.in/oralcare

3M, 3M Science. Applied to Life., Elipar, Filtek, Scotchbond and Sof-Lex are trademarks of 3M Company. Used under licence in Canada. All other trademarks are owned by other companies. Please recycle. Printed in U.S.A. © 3M 2021. All rights reserved.