



Science.
Applied to Life.™

Safer roads for a safer future

Case studies

3M™ Stamark™ Pavement Markings



A380 field performance data – USA

3rd party data helps substantiate 3M™ Stamark™ permanent marking tape A380 durability value proposition.

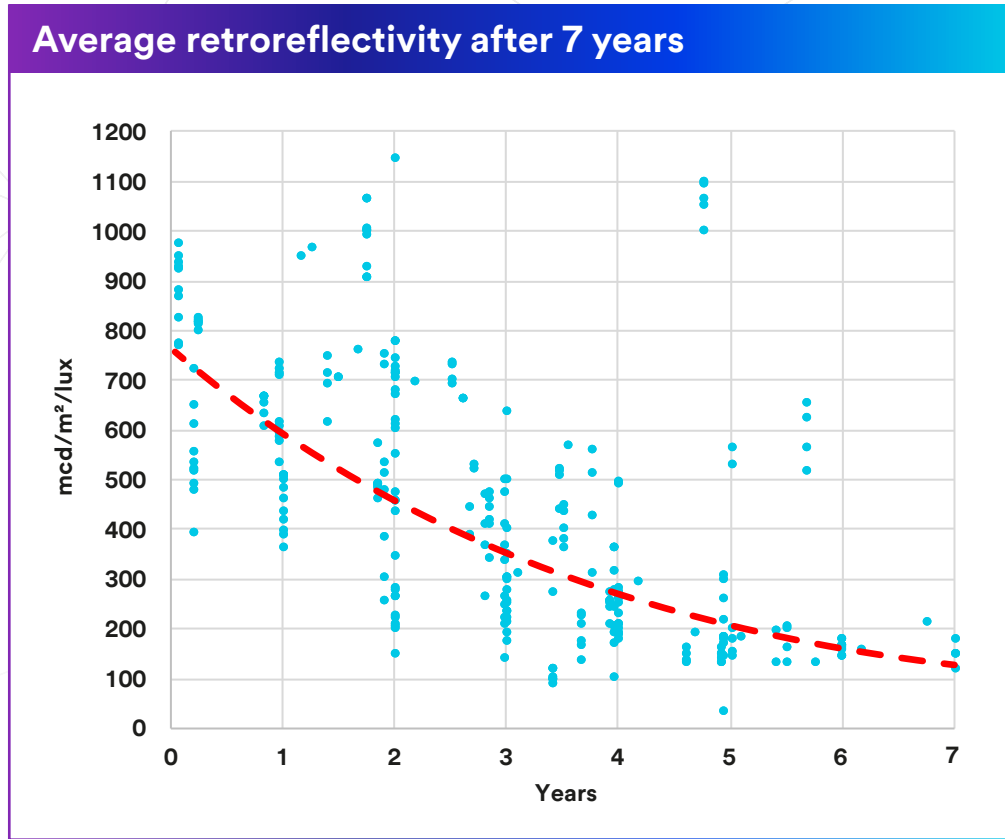
Locations 26 roads in 8 States

States

- ▶ Georgia
- ▶ Alabama
- ▶ Pennsylvania
- ▶ Wisconsin
- ▶ Arizona
- ▶ Arkansas
- ▶ Minnesota
- ▶ Idaho

Characteristics of road locations

Materials: A380I ES and A380AW	Site information
Measurement methodology: External Data collected by Beck Engineering with Vehicle Mounted LTL Mobile Retroreflectometer	▶ Expressway
	▶ Lane AADT range: 4,000 to 26,000
	▶ Skip line, right edge lines
	▶ Concrete and asphalt




Sources: Dataset maintained by 3M TSD Pavement Marking Lab and Marketing Teams

Note: Many factors influence field performance, always consult 3M Application Engineers (AE) for guidance.

A380I ES compared to thermoplastic – USA

Internal 3M data helps substantiate 3M™ Stamark™ permanent marking tape A380 durability value proposition.

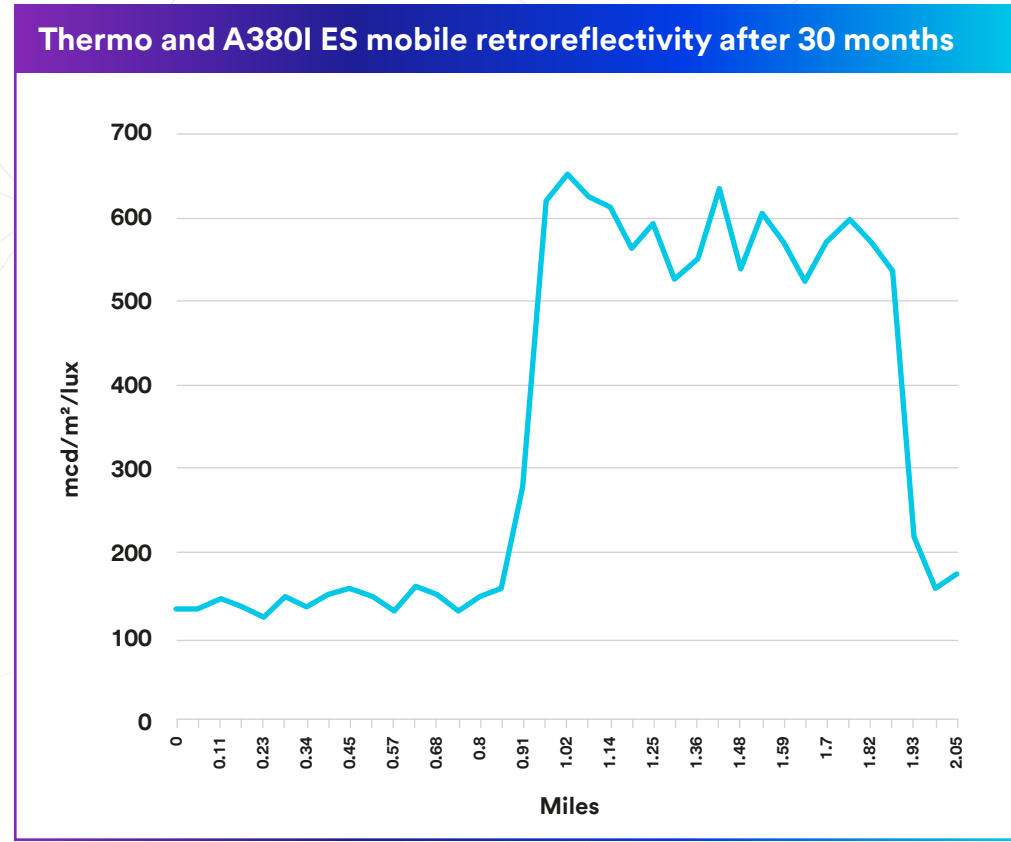
California, I-5, North of Williams



© Google Maps

Characteristics of road

Materials: A380 IES and thermoplastic installed on same day	Installation date: Oct 2012
Measurement methodology: Internal 3M Data collected with Delta's Vehicle Mounted LTL Mobile Retroreflectometer	Measurement date: Jul 2015
	Site information
	▶ Expressway (I-5), ~9,500 Lane ADT in California
	▶ Surface applied skip line



Sources: Delta LTL-M Mobile retro data collected by 3M Application Engineering in 2015, Data maintained by 3M TSD Global Pavement Marking Lab and Marketing

Note: Many factors influence field performance, always consult 3M AE team for guidance

A380I ES field performance data – USA

Internal 3M data helps substantiate 3M™ Stamark™ permanent marking tape A380 durability value proposition.

Alabama, I-59



Characteristics of road

Materials:
A380 IES

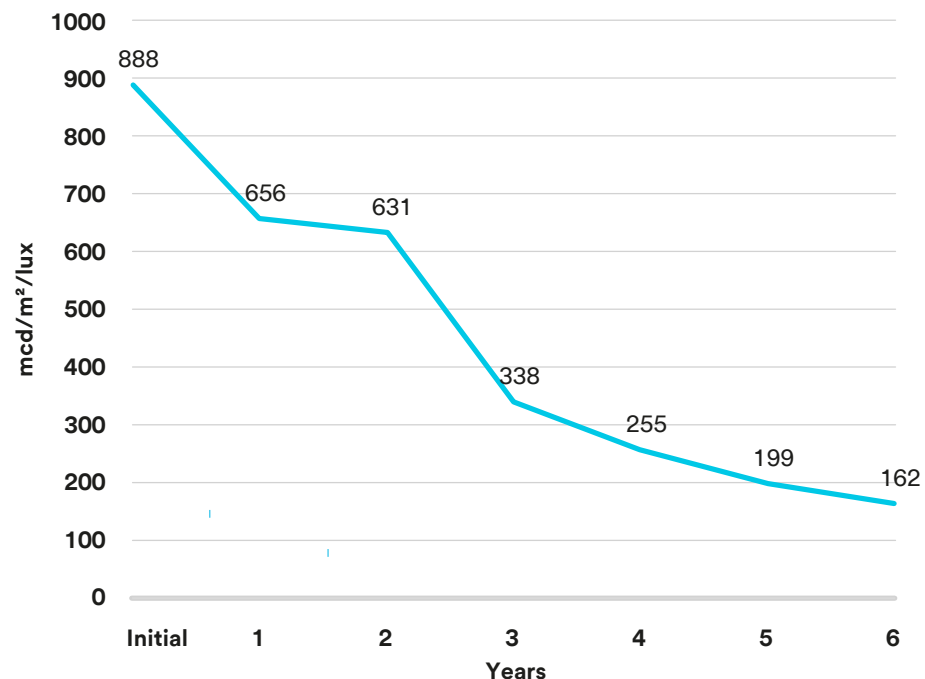
Measurement methodology:
External Data collected by Beck Engineering with Vehicle Mounted LTL Mobile Retroreflectometer

Installation date: Oct 2007

Site information

- ▶ Expressway, ~18,000 Lane ADT (~137,000 Road ADT)
- ▶ Surface applied skip line
- ▶ Concrete

Average dry retroreflectivity over 6 years



A380I ES field performance data – USA

3rd party data helps substantiate 3M™ Stamark™ permanent marking tape A380 durability value proposition.

Pennsylvania Turnpike, I-76



Characteristics of road

Materials:
A380 AW

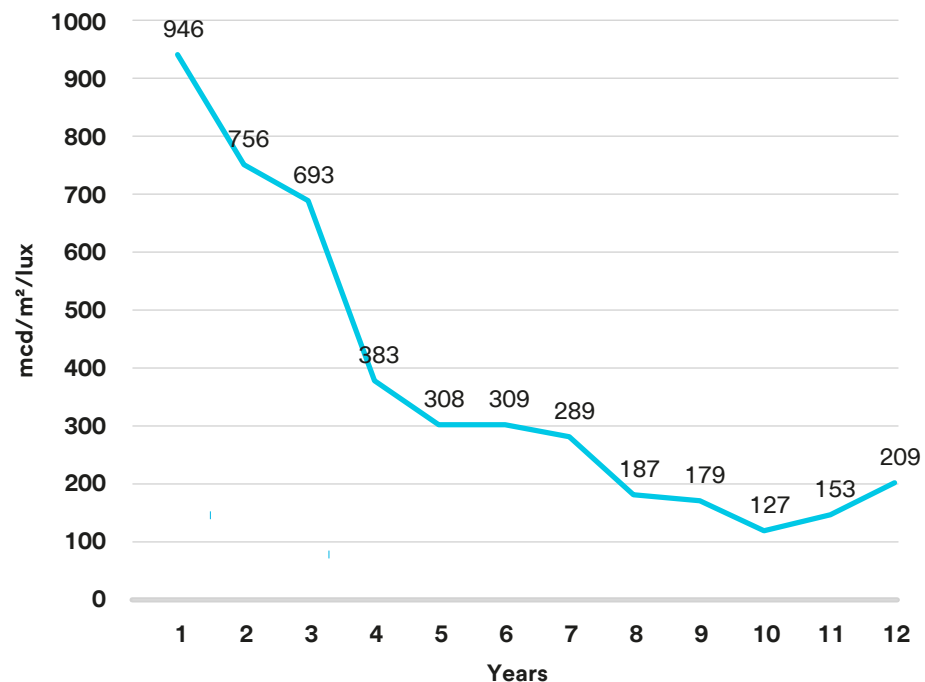
Measurement methodology:
External Data collected by Beck Engineering with Vehicle Mounted LTL Mobile Retroreflectometer

Installation date: Jul 2012

Site information

- ▶ Expressway, ~6,000 Lane ADT (~24,000 Road ADT)
- ▶ Grooved skip line
- ▶ Asphalt

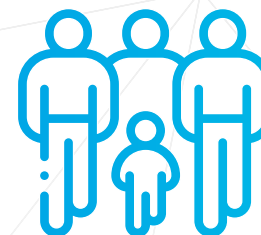
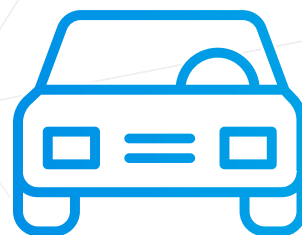
Average dry retroreflectivity after ~7 years



Contact us

We're always available to offer help and answer any questions you have.

Access the contact form here



3M United Kingdom PLC

3M Centre,
Cain Road,
Bracknell,
RG12 8HT

+44 870 536 0036

3M Ireland

The Iveagh Building,
Carrickmines Park,
Carrickmines,
Dublin 18

+00 353 (01) 280 3555

