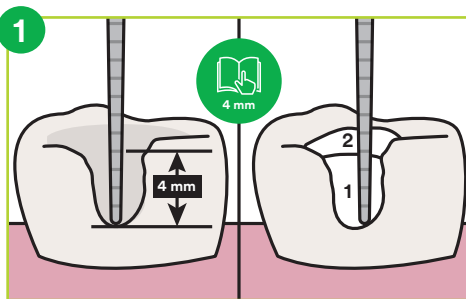


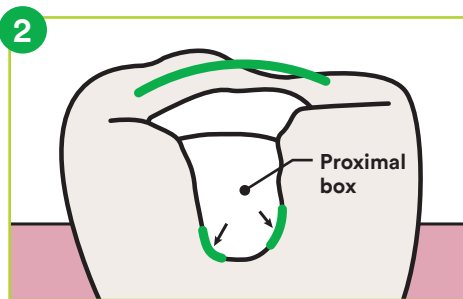
Curing guidelines for using bulk fill resin composites, according to the Halifax Consensus Statement*

3M™ Elipar™ DeepCure-S LED Curing Light
3M™ Elipar™ DeepCure-L LED Curing Light



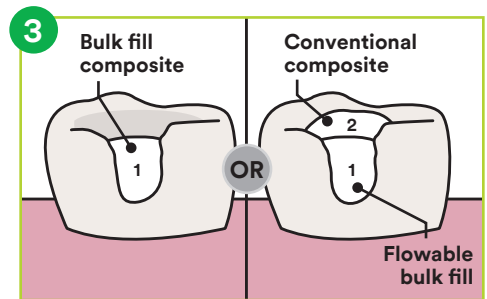
Before you start ...

- Measure the depth of the preparation
- Do not exceed product maximum increment thickness
- Follow manufacturer's recommended guidelines for light curing
- Incremental filling and light curing each increment separately may be required for large restorations
- Refer to the Instructions for Use for more details



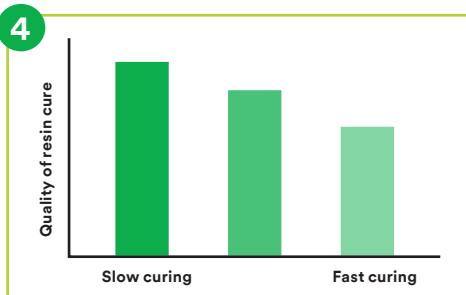
Before you fill a Class II ...

- Ensure you have a good matrix contour and adaption, especially at the bottom of the proximal box



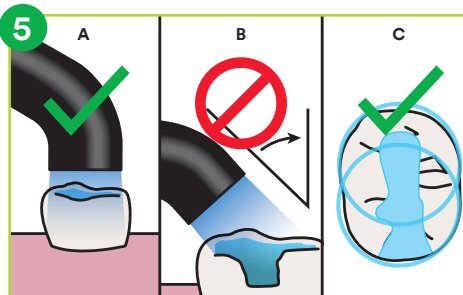
When you fill ...

- Fill carefully to avoid trapping air
- Some bulk fill composite resins should be covered with a conventional composite to improve esthetics, reduce wear and to help create occlusal anatomy

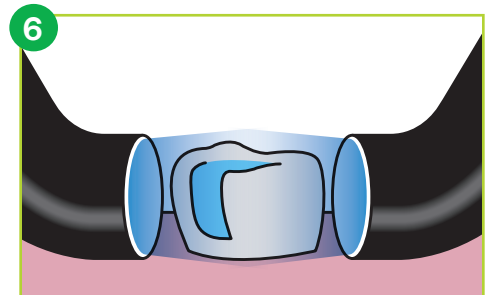


When you light cure ...

- Short exposure times using high-output curing lights may compromise the properties of some resins



- Cure each increment of composite according to product manufacturer's guidelines
 - A) Keep light tip close to the restoration
 - B) Avoid creating shadows
 - C) Use multiple exposures to fully cover the restoration



- Light cure from the buccal and lingual directions after removing the matrix
- Avoid overheating the tooth and gingiva (Directing high-volume suction across tooth during light curing helps)

Steps 1 through 6 are general guidelines from the Halifax Consensus Statement* and may not be applicable to every curing light. For Elipar DeepCure-S and Elipar DeepCure-L LED Curing Lights, please refer to Instructions for Use.

Resource courtesy of Dr. Richard Price, professor and head of fixed prosthodontics, department of dental clinical sciences, faculty of dentistry, Dalhousie University. Email: rbprice@dal.ca

*Source: Halifax Consensus Statement from the 2014 Symposium on Light Curing in Dentistry, Dalhousie University, Halifax, Canada. First published in the Journal of Canadian Dental Association, j can dent assoc 2014;80:e61.

Choose from two models, both with identical technical performance.

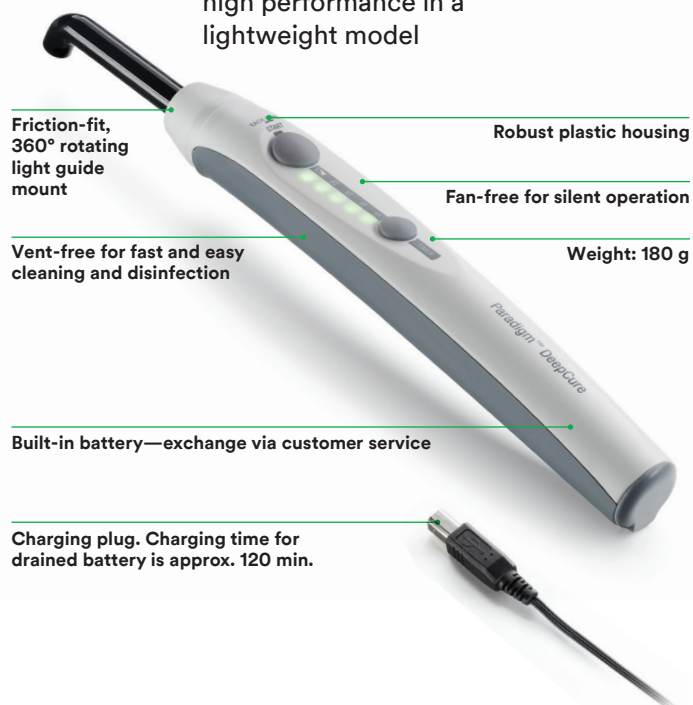
3M™ Elipar™ DeepCure-S LED Curing Light

For dentists who enjoy the look, feel and durability of high-quality stainless steel



3M™ Elipar™ DeepCure-L LED Curing Light

For dentists who want high performance in a lightweight model



Technical Performance Data for Both Models

Wavelength	430–480 nm
Light intensity	1,470 mW/cm ² (-10%/+20%)
Power supply	Lithium-ion battery Approx. 120 min. battery runtime (~720 10-sec. cures) with constant light output regardless of battery charge
Operation	Intuitive two-button and single-mode operation Pre-set cure times: 5, 10, 15 and 20 seconds, continuous mode (120 sec.) and tack-cure mode
Curing time	Refer to material instructions; 10 sec. for many composites
Light guide	10 mm, black coated, autoclavable, optimal intraoral reach due to user- and patient-friendly geometry

Ordering Information—Stainless Steel

Item #	Product Information
76977	3M™ Elipar™ DeepCure-S LED Curing Light Contains: Handpiece (Cordless); Charging Base; Li-ion Battery; 10mm Light Guide; Eye Shield
76981	3M™ Elipar™ DeepCure-S Light Guide, 10mm
76984	3M™ Elipar™ DeepCure Eye Shield
76985	3M™ Elipar™ DeepCure-S Rechargeable Li-ion Battery

Ordering Information—Lightweight

Item #	Product Information
76973	3M™ Elipar™ DeepCure-L LED Curing Light Contains: Handpiece (built-in Li-ion battery); Universal Power Supply with 5 adaptors; 10mm Light Guide; Eye Shield; 3 Curing Discs
76983	3M™ Elipar™ DeepCure-L Light Guide, 10mm
76984	3M™ Elipar™ DeepCure Eye Shield
76965	3M™ Elipar™ DeepCure-L Curing Discs (5 pcs.)



3M Oral Care
3M United Kingdom PLC
Charnwood Campus
10 Bakewell Road
Loughborough
Leicestershire LE11 5RB

3M Ireland Ltd
The Iveagh Building
Carrickmines Park
CarrickminesDublin 18
00 353 (01) 280 3555

3M.co.uk/Dental

3M and Elipar are trademarks of 3M Company. © 3M 2021. All rights reserved.