



Veraflo™
Therapy

3M™ V.A.C.® Ulta 4 Therapy using 3M™ V.A.C. Veraflo Cleanse Choice™ Dressing

This Application Summary should be used only in conjunction with the information provided in the V.A.C. Veraflo Cleanse Choice Dressing cartons.

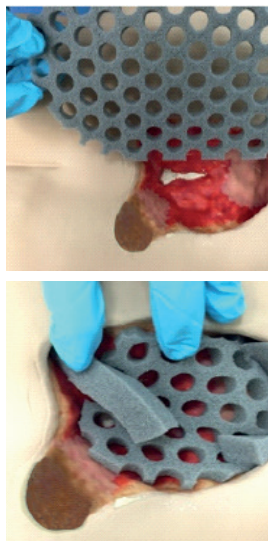
1. Wound preparation and application of 3M™ Cavilon™ No Sting Barrier Film

- If the wound is debrided prior to application ensure debridement of all necrotic, non-viable tissue, including bone, eschar, or hardened slough, as prescribed treating physician.
- Perform thorough wound and periwound area cleaning per physician order or institution protocol prior to each dressing application.
- Skin should be clean and dry prior to application of Cavilon No Sting Barrier Film.
- Wipe uniform coating of film over the entire area of concern.
- Allow to thoroughly dry before applying drape.*



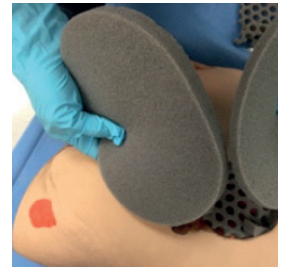
2. Placement of wound contact layer

- Protect sensitive structures, vessels, and organs as needed.
- Assess wound dimensions and pathology, including the presence of undermining or tunnels.
- Cut the thin or thick cover layer of foam to fill explored tunnels and undermining. Be sure foam in tunnels makes contact with cover layer.
- Cut wound contact layer as needed to cover the entire wound bed and gently place in wound.



3. Filling the wound with the Cover Layer

- Cut thick or thin cover layer as needed to fill the wound depth and gently place in the wound on top of the wound contact layer.
- Do not tightly pack the dressings into the wound.



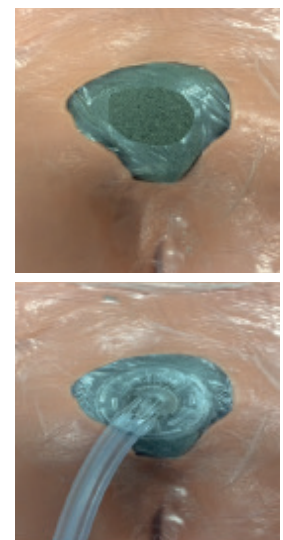
4. 3M™ V.A.C.® Advanced Drape application

- Trim the drape to cover the foam and at least an additional 3–5cm border of intact periwound tissue.
- Remove layer 1 to expose the adhesive and apply to cover layer and intact skin while ensuring skin wrinkles and folds are smoothed.
- Remove layer 2 and pat the drape to ensure an occlusive seal.
- Remove the ruler/handling bars.



5. 3M™ V.A.C. VeraT.R.A.C.™ Pad placement

- Choose pad application site. Give particular consideration to tubing positioning to allow for optimal flow, and avoid placement over bony prominences or within creases in the tissue.
- Cut an approximately 2.5cm hole through the drape to affix V.A.C. VeraT.R.A.C. pad.
- Remove both backing layers 1 and 2 to expose adhesive.
- Position and apply V.A.C. VeraT.R.A.C. pad over the 2.5cm hole.
- Pull back on blue tab to remove pad stabilization layer.



* Cavilon No Sting Barrier Film is extremely flammable. Allow product to dry for minimum 90 seconds before using any device that could provide a source.

** If adjunct non-adherent material used under contact layer, must be compatible with solution to be instilled and massaged, porous or fenestrated to allow for fluid removal.

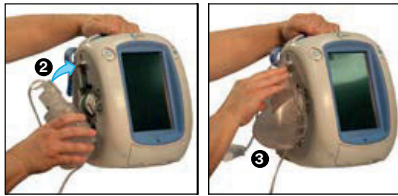
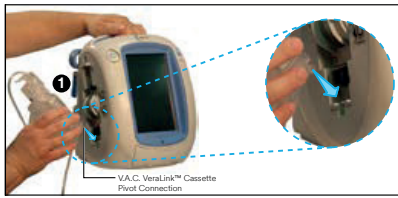
Note:

- Dressings should be changed every 48–72 hours, but no less than three times per week with frequency adjusted by the clinician as appropriate.
- Do not cut dressing over wound bed.
- Do not pack foam into wound.
- Do not use the wound contact layer with holes in tunnels or undermined area.

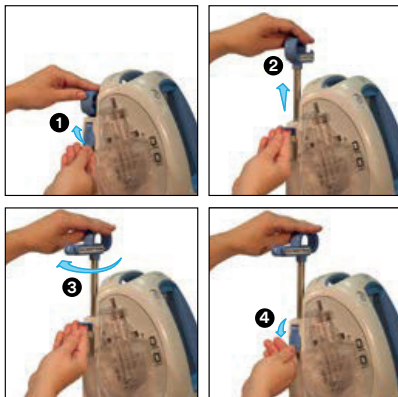
Note: If using the 3M™ V.A.C. VeraT.R.A.C. Duo™ Tube Set, please refer to V.A.C. Veraflo Cleanse Choice Dressing Application Instructions.

Setting up the Therapy Unit

6. Attach the 3M™ V.A.C. Veralink™ Cassette



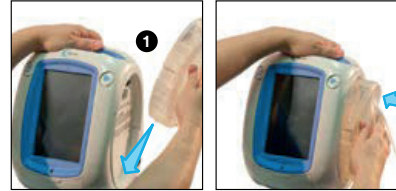
7. Extend the solution container hanger arm



8. Spike and hang the solution container bag/bottle

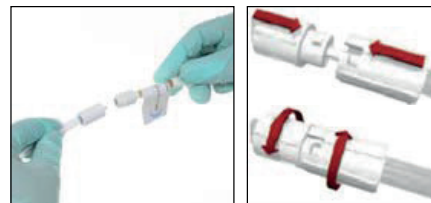


9. Attach the 500ml or 1000ml canister



10. Connect the dressing tubing

- After applying the dressing; connect the V.A.C. Veralink Cassette tubing to the instillation line of the 3M™ V.A.C. VeraT.R.A.C.™ Pad / 3M™ V.A.C. VeraT.R.A.C. Duo™ Tube Set.
- Connect the canister tubing to the dressing tubing
 - Push connectors together and twist until the locking tabs are fully engaged.



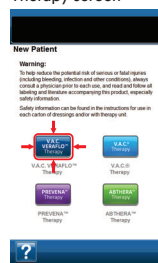
Note: Refer to the Instructions for Use for complete details regarding dressing application.

Initiating 3M™ V.A.C. Veraflo™ Therapy



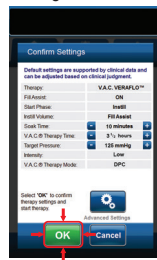
Press and hold powerbutton until light comes on.

Choose Therapy screen



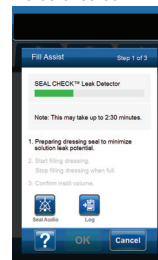
Select Veraflo Therapy

Confirm Settings screen



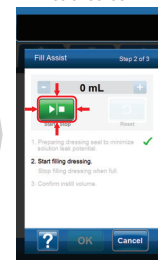
Select OK to accept default settings

Seal Check™ Leak Detector screen



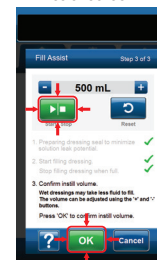
Drawdown begins

Fill Assist screen



Select Start/Stop on the Fill Assist screen to begin delivering solution to the wound

Fill Assist screen



Stop Fill Assist by depressing Start/Stop. Select OK when satisfied with instillation volume

Home screen Veraflo Therapy



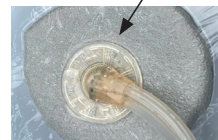
Veraflo Therapy begins

For more information, contact your local representative.

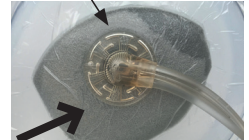


3M Company
2510 Conway Ave
St. Paul, MN 55144 USA

Phone 1-800-275-4524 (NPWT products)
1-800-228-3957
Web 3M.com/medical



Dressing colour will remain unchanged when beginning the fill assist phase



Stop fill assist when instillation fluid begins to build around the V.A.C. VeraT.R.A.C. Pad.

Note: If an alarm condition cannot be resolved, contact a healthcare provider or 3M.

Note: Specific indications, contraindications, warnings, precautions and safety information exist for these products and therapies. Please consult a clinician and product instructions for use prior to application. Rx only.

©2021 3M. All rights reserved. 3M and the other marks shown are marks and/or registered marks. Unauthorized use prohibited. 70-2013-1122-5 PRA-PM-US-03431 (09/21)