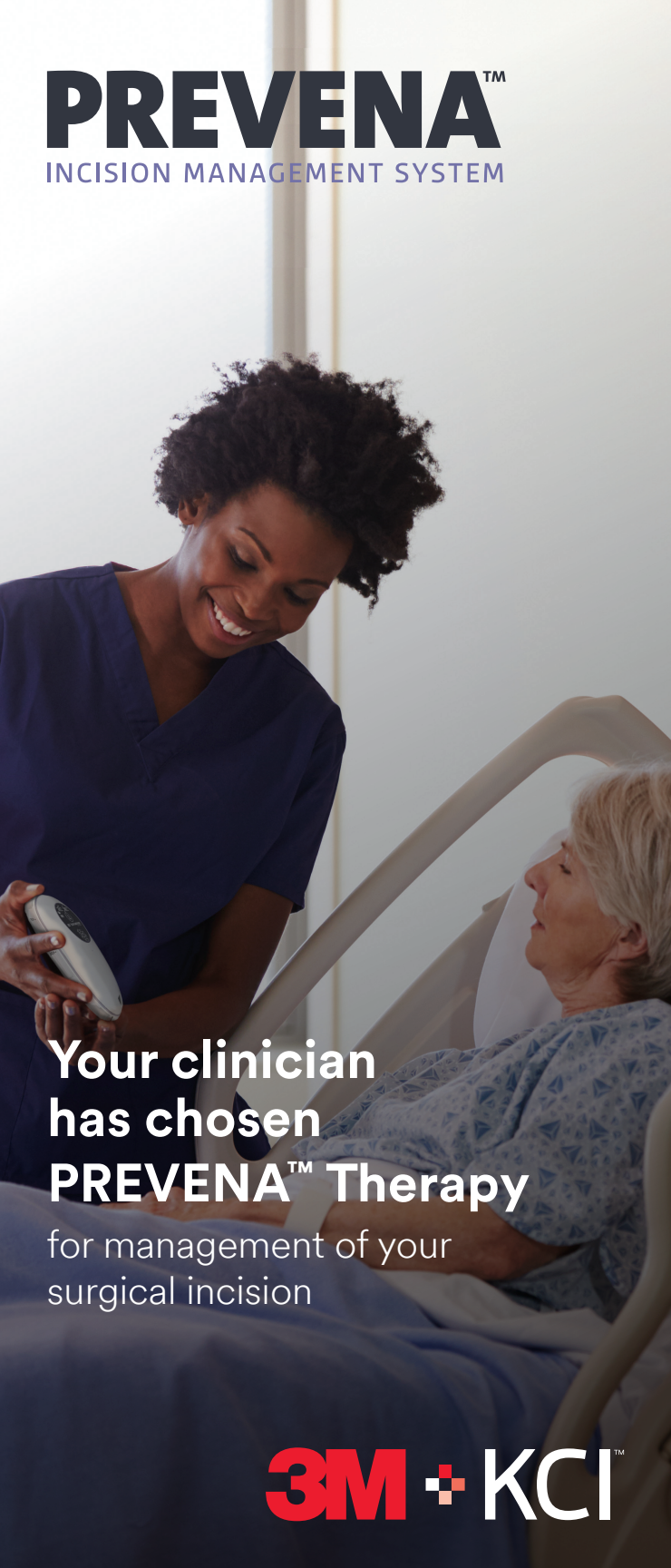


PREVENA™

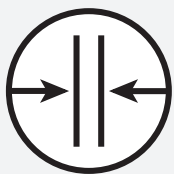
INCISION MANAGEMENT SYSTEM



**Your clinician
has chosen
PREVENA™ Therapy**
for management of your
surgical incision

3M + **KCI**™

Your doctor has selected the PREVENA™ System to help protect your incision by:



Helping
hold incision
edges
together



Providing
protection
from outside
sources of
infection



Removing
fluid from the
incision site

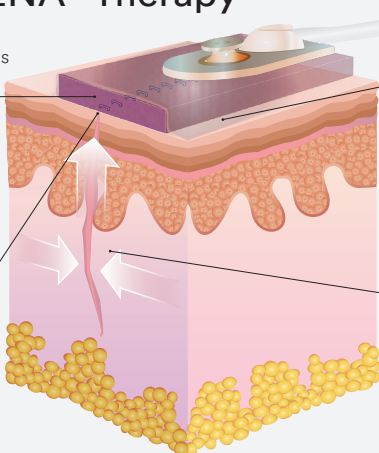
Protecting Your Incision is Important to Your Recovery

- An **incision** is a cut through the skin and tissue of the body that is made during surgery and then closed using products such as surgical stitches, staples or a combination of these methods.
- Incisions heal at the skin surface as well as below.
- Taking care of your incision is a key step that may impact both your recovery time and your quality of life.

PREVENA™ Therapy

Removes fluids
and infectious
material

Incision at
Skin surface



Protects
from outside
sources of
infection

Helps hold
incision edges
together

FAQs

How long do I keep PREVENA™ Therapy on my incision?

- Wear the system for as long as your doctor has ordered. The therapy unit will turn off automatically at 7 days.

Will my incision dressing need to be changed?

- The dressing is not typically changed. Follow your doctor's instructions.

What happens if my PREVENA™ System alarms?

- The therapy unit has alarms that you can see and hear to alert you of a potential issue such as a low battery or air leak. In most cases the issue is easily resolved. Refer to the PREVENA™ Therapy Patient Guide or call Customer Service **1800 742 9929**.

Where do I get more information?

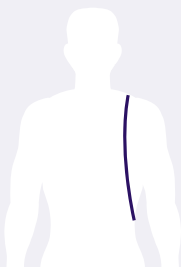
- Your PREVENA™ Therapy Patient Guide has more complete safety information and details on how to use your PREVENA™ Therapy.
- Contact your clinician with any medical questions.

How to Wear Your PREVENA™ Therapy Unit

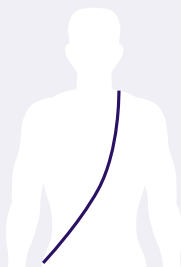
This portable unit should **always** be kept on for the time your doctor has instructed. For sleeping and showering, follow the instructions listed in this brochure. The unit can be worn under your clothing and includes a carrying case with adjustable straps you can use multiple ways.



At the hip



Over the
shoulder



Across
your body



PREVENA™
125 therapy
unit and
carrying
case

NOTE: The PREVENA™ System is not indicated for use in children.

What is PREVENA™ Therapy?

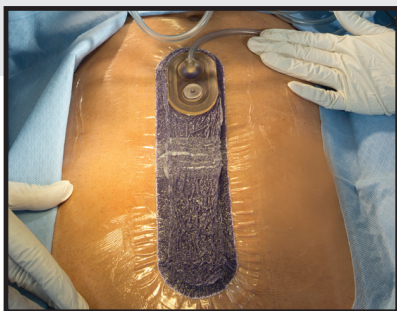
PREVENA™ Therapy is a portable, disposable system, which uses **negative pressure** (like a vacuum) to protect your incision.

Meet Your PREVENA™ System

You will be provided after surgery with the PREVENA PEEL & PLACE™ System or the PREVENA PLUS™ System. Both PREVENA™ Systems work similarly with just a few differences.

Your System includes:

- A therapy unit that provides negative pressure to the dressing
- A dressing with a water resistant cover that is placed over your incision
- A connection tube
- A canister where incision fluid is collected
- A battery charger
(The PREVENA PLUS™ Therapy Unit has a rechargeable battery)
- A carrying case with adjustable straps



NOTE: The PREVENA™ System can be used on different incision types. Your incision size and location may vary from what is shown in the above image.

Caring for Your PREVENA™

PREVENA PLUS™ 125 Therapy Unit

System:

Keep your therapy unit in a safe place where:

- Tubing will not become kinked or pinched
- It cannot be pulled off a table or dropped onto the floor



Showering:

If cleared by your doctor, a quick, light shower is ok. Keep the therapy unit away from direct water spray. **Do not submerge dressing in water.**

Before showering, disconnect the dressing from the therapy unit.

1. Hold the ON/OFF button down until therapy stops
2. If applicable, close the clamp located on the connection tubing
3. Disconnect the tubing from the therapy unit
 - When towel drying, be careful not to disrupt the dressing.

See PREVENA PLUS™ Therapy Patient Guide for additional details.

Batteries:

- This therapy unit has a rechargeable battery and comes with a charger.
- Bring your charger with you if you are gone for extended periods of time.
- For convenience, consider charging your therapy unit battery while you are sleeping.

Therapy Unit

PREVENA™ 125 Therapy Unit

System:

Keep your therapy unit in a safe place where:

- Tubing will not become kinked or pinched
- It cannot be pulled off a table or dropped onto the floor



Showering:

If cleared by your doctor, a quick, light shower is ok. Keep the therapy unit away from direct water spray. **Do not submerge dressing in water.**

- When towel drying, be careful not to disrupt the dressing.

See PREVENA™ Therapy Patient Guide for additional details.

Batteries:

- This therapy unit comes with three AA size batteries and cannot be recharged.
- It is recommended that you keep extra batteries on hand. If the batteries run out, consult your PREVENA™ Therapy Patient Guide on how to replace the batteries.

Your PREVENA™ Therapy Dressing

Do not attempt to remove or peek under the dressing while therapy is being applied.

PREVENA™ System specialists are here to support you. Call your local 3M+KCI representative or Customer Service on **1800 742 9929** with questions.

IMPORTANT INFORMATION

Patients: It is important that you discuss any potential benefits and risks of a specific therapy with your doctor to decide whether it is right for you. Please consult your treating medical professional regarding specific questions and important information related to your PREVENA™ Therapy indications, contraindications, warnings, precautions and operation.

NOTE: Specific indications, contraindications, warnings, precautions and safety information exist for these products and therapies. Please consult a clinician and product instructions for use prior to application. This material is intended for healthcare professionals.

© 2020 3M. All rights reserved. 3M and the other marks shown are marks and/or registered marks. Unauthorized use prohibited.
PRA-PM-SG-00036 (10/20)