

QUICK GUIDE

3M™ Snap™ Therapy System



Clinical Pathway to 3M™ Snap™ Therapy System

Full holistic assessment of patient and wound

Is the wound type indicated for NPWT use without contraindications¹?

Snap Therapy System is indicated for the removal of small amounts of exudate from:

- Chronic, acute, traumatic, sub-acute and dehiscent wounds
- Ulcers (such as diabetic, venous or pressure)
- Flaps and grafts

YES

NO

Wound characteristics that may be appropriate for the Snap Therapy System

- Longer-than-expected duration for the wound type
 - Low-to-moderate volumes of exudate
 - Thin- to medium-viscosity exudate
 - Wound bed not granulating
 - Wound bed granulating but not epithelializing
 - Shallow cavity wounds <3cm deep.
- For deeper wounds - consider traditional NPWT

NO

YES

Dressing/patient characteristics that may be appropriate for the Snap Therapy System

- Wound size <13cm x 13cm
- Wound drainage <180ml of exudate per week
- Active, ambulatory or elderly patients
- Patient wants and is able to actively engage in self-care or has a carer who can assist
- Patient has no allergy to hydrocolloid adhesives or polyurethane films

NO

YES

Initiate Snap Therapy System, with dressing changes a minimum of two times per week, or as exudate levels dictate. Review the dressing regimen weekly.

STOP! CONSIDER USE OF ALTERNATIVE THERAPIES

¹Contraindications:

- Active bleeding
- Malignancy
- Untreated osteomyelitis
- Exposed organs, vessels, tendons, nerves, anastomosis sites
- Fistulas
- Active infection
- Inadequately drained
- Necrotic tissue

Using your 3M™ Snap™ Therapy System

Prepare the wound bed and periwound skin per institutional protocol. If necessary apply a skin protectant to the surrounding skin and allow to dry.

STEP 1: Cut the foam interface to fit the size and shape of the wound. Remove backing and carefully place the 3M™ Snap™ Advanced Dressing over the wound and seal.



STEP 2: After considering the desired location of the 3M™ Snap™ Therapy Cartridge, cut the dressing tubing to the desired length, if required. Fully insert the Tube Fitting into the tubing. Note: DO NOT remove the cap at the end of the tube fitting.



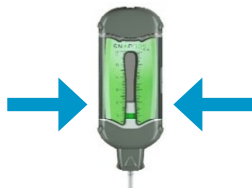
STEP 3: Connect the 3M™ Snap™ Cartridge to the Tube Fitting using both hands. Activate the Snap Cartridge by pushing down the Activation/Reset Key to release and remove the key from the Snap Cartridge. Cartridge may need to be primed multiple times depending on size of the dressing.

NOTE: Keep the Activation/Reset Key. DO NOT throw away.



STEP 4: Check negative pressure operation. Snap Therapy System is working properly if:

- Green capacity indicator is both visible and stationary in the chamber window
- Dressing has a “sucked down” appearance
- Dressing feels hard to the touch



3M™ Snap™ Therapy System

3M™ Snap™ Therapy Cartridge : 60cc cartridge contains and measures fluids and infectious material away from the wound bed

3M™ Snap™ Therapy Strap



3M™ Snap™ Advanced Dressing:

Cut-to-fit hydrocolloid dressing keeps a secure seal and provides periwound protection

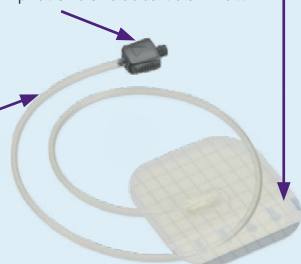
3M™ Snap™ SecurRing™ Hydrocolloid Skin Barrier:

For easy sealing on uneven surfaces and challenging anatomies

Tube Fitting:

Contains one way valve to prevent exudate back-flow

Cut-to-length tubing



3M™ Snap™ Bridge Dressing

For the initial application, you need to order:

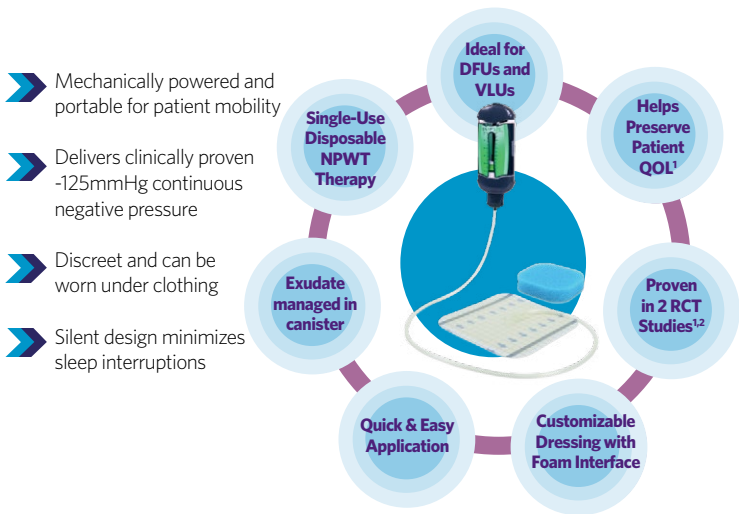


If required, you may also need these accessories:



Summary

The **3M™ Snap™ Therapy System** is a wearable dNPWT device that combines the simplicity of advanced wound dressings with the proven efficacy of negative pressure wound therapy in a discreet design that helps preserve patient quality of life.¹



NOTE: Specific indications, contraindications, warnings, precautions and safety information exist for these products and therapies. Please consult a clinician and product instructions for use prior to application. Rx only.

1. Armstrong DG, Marston WA, Reyzelman AM, Kirsner RS. Comparative effectiveness of mechanically and electrically powered negative pressure wound therapy devices: a multicenter randomized controlled trial. *Wound Repair and Regen* 2012;20(3):332-41.
2. Martston WA, Armstrong DG, Reyzelman AM, Kirsner RS. A multicenter randomized controlled trial comparing treatment of venous leg ulcers using mechanically versus electrically powered negative pressure wound therapy. *Adv Wound Care* 2015;4(2):75-82.

3M Science.
Applied to Life.™

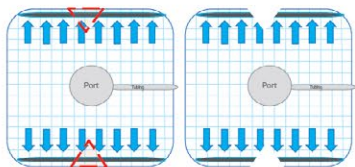
© Wounds International 2021
Supported by 3M
www.3M.com

Dressing application



Note: Consider using the 3M™ Snap™ SecurRing™ Hydrocolloid Skin Barrier in tough to seal areas.

3M™ Snap™ Advanced Dressing Application on a Heel

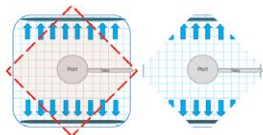


Heel Application



3M™ Snap™ Advanced Dressing Application on a Toe Amputation/Wedge Resection

OPTION 1

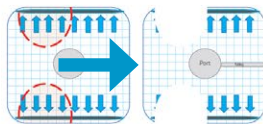


Toe Amputation/Wedge Resection Application

Option 1



OPTION 2



Toe Amputation/Wedge Resection Application

Option 2



Snap Advanced Dressing Application on a Transmetatarsal Amputation (TMA)

