



SCOTT™
Fire & Safety



**3M™ Scott™ Vision C5 Facepiece with Radio Direct Interface
Motorola Solutions APX™ Series Configuration Recommendations**

Warnings:

Failure to adhere to any and all warnings may result in serious injury.

- The Motorola Solutions APX™ Land Mobile Radio (LMR) and its accessories are compatible with the 3M™ Scott™ Vision C5 Facepiece with Radio Direct Interface (RDI) and related respiratory products, which may support human life in hazardous atmospheres. Failure to carefully follow the instructions and warnings, as contained in the appropriate user instruction manuals, may result in serious injury.
- These products are designed and intended to function properly in reasonable/ordinary firefighting conditions. Like all equipment the functionality may be compromised by extreme fire conditions.

Motorola Solutions APX™ Radio Configuration for 3M™ Scott™ Vision C5 Facepiece with RDI

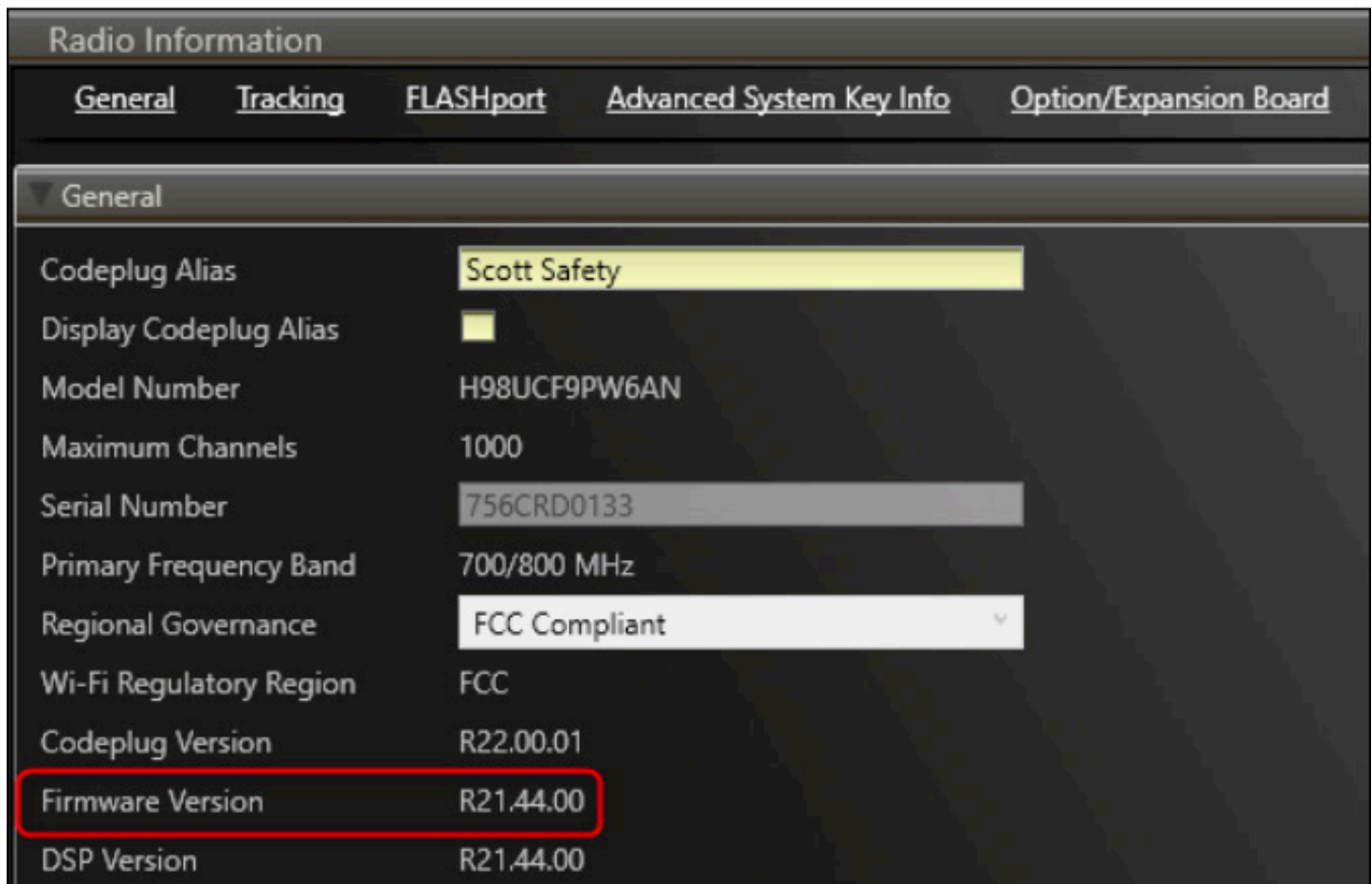
These settings are recommendations for best performance of your Motorola Solutions APX™ LMR and Motorola Solutions XE Series Remote Speaker and Microphone (RSM) to ensure operation with the 3M™ Scott™ Vision C5 Facepiece with RDI. The radio settings shown in this guide are accessible using Motorola Solutions' APX™ CPS Programming Software.

All other radio settings can be customized to meet specific customer requirements. Please contact Motorola Solutions or your Motorola Solutions business partner regarding how to have a Motorola Solutions Certified APX™ Series Radio Technician program your LMRs.

Motorola Solutions APX™ Radio Firmware Configuration

All Motorola Solutions APX™ radios should be updated to the latest APX firmware to operate effectively with the 3M™ Scott™ Vision C5 Facepiece with RDI.

When properly configured, your selection screen will look something like the one below:



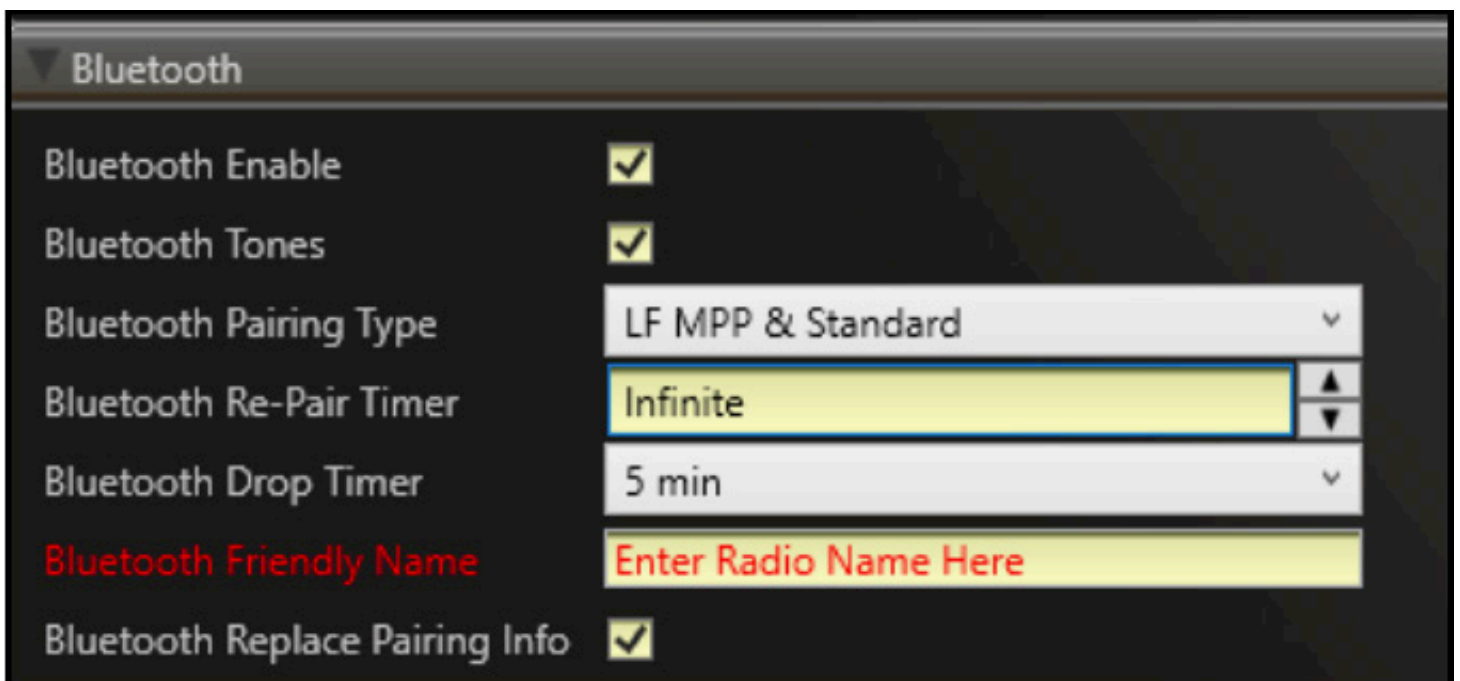
Radio Information				
<u>General</u>	<u>Tracking</u>	<u>FLASHport</u>	<u>Advanced System Key Info</u>	<u>Option/Expansion Board</u>
▼ General				
Codeplug Alias	Scott Safety			
Display Codeplug Alias	<input type="checkbox"/>			
Model Number	H98UCF9PW6AN			
Maximum Channels	1000			
Serial Number	756CRD0133			
Primary Frequency Band	700/800 MHz			
Regional Governance	FCC Compliant			
Wi-Fi Regulatory Region	FCC			
Codeplug Version	R22.00.01			
Firmware Version	R21.44.00			
DSP Version	R21.44.00			

Radio Wide Bluetooth® Configuration

All Motorola Solutions APX™ LMRs should have the following Bluetooth configuration settings to operate effectively with the 3M™ Scott™ Vision C5 Facepiece with RDI:

Bluetooth® Enable:	Checked
Bluetooth® Tones:	Checked
Bluetooth® Pairing Type:	LF MPP & Standard
Bluetooth® Re-Pair Timer:	Infinite
Bluetooth® Drop Timer:	5 minutes (minimum)
Bluetooth® Replace Pairing Info:	Checked

When properly configured, your selection screen will look like the one below:



Radio Ergonomics Configuration

All Motorola Solutions APX™ LMRs and Motorola XE Series RSMs should have the following Radio Ergonomics Configuration settings to operate effectively with the 3M™ Scott™ Vision C5 Facepiece with RDI and Bone Conduction Headphone (BCH):

Active Mic for Radio PTT:	Wireless Mic
Active Mic for RSM PTT:	Wireless Mic
Active Mic for Bluetooth® PTT:	Wireless Mic
Bluetooth® Receive Audio:	Bluetooth® Speaker (if equipped with BCH) RSM/Internal Speaker (without BCH)

The screenshot shows the 'Radio Ergonomics Wide' configuration window. The left sidebar lists various configuration categories, with 'Radio Ergonomics Wide' selected. The main area displays settings for 'Home Mode' and 'Advanced'. The 'Advanced' section includes settings for keypress durations, power off, lockouts, and microphone settings. A red box highlights the following settings:

- Active Mic for Radio PTT: Wireless Mic
- Active Mic for RSM PTT: Wireless Mic
- Active Mic for Bluetooth PTT: Wireless Mic Only
- Bluetooth Receive Audio: Bluetooth Speaker

Radio Button Configuration

Motorola Solutions APX™ LMRs and XE Series RSMs can have the buttons on the side programmed to perform special functions. It is recommended that at least two of the buttons be programmed to allow for users to be able to switch Bluetooth on/off and redirect incoming audio from the Bone Conduction Headset, if equipped, to the RSM.

Side (Purple) Top Button:	Bluetooth® Audio Reroute
Side (1-dot) Middle Button:	Bluetooth® On/Off

Name	Conventional Feature	Trunking Feature
Top Button	Blank	Blank
Side Top Button	Bluetooth Audio Reroute	Bluetooth Audio R
Side Middle Button	Bluetooth On/Off	Bluetooth On/Off
Side Bottom Button	Bluetooth Inquiry On/Off	Bluetooth Inquiry

Accessory Button Configuration

For all Motorola Solutions APX™ LMRs using Motorola Solutions XE Series RSMs 3M™ Scott™ recommends the following button configuration settings to allow the user to conveniently switch incoming LRM audio between the 3M™ Scott™ Vision C5 Facepiece with RDI and RSM.

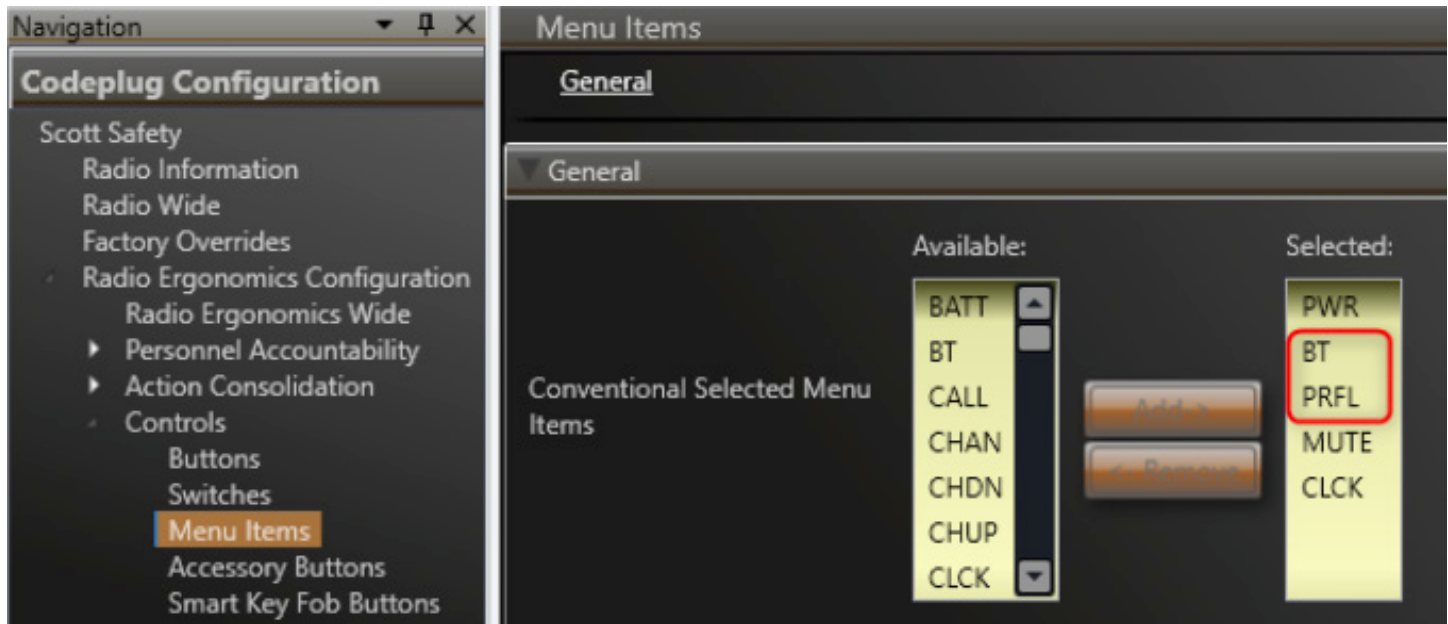
Accessory no-dot:	Bluetooth® Audio Reroute (optional setting)
-------------------	---

NOTE: The XE Series RSM primary push-to-talk (PTT) button will control the PTT functions of the 3M™ Scott™ Vision C5 Facepiece with RDI as programmed in the Radio Ergonomics Configuration section under the Active Mic for RSM PTT setting.

Name	Conventional Feature	Trunking Feature
Accy Orange	Blank	Blank
Accy no-dot	Bluetooth Audio Reroute	Bluetooth Audio Rerout
Accy 1-dot	Blank	Blank
Accy 2-dot	Blank	Blank

Radio Display Menu Configuration

Motorola Solutions APX™ LMRs equipped with dual displays (APX Series LMRs v2.5 and v3.5) are recommended to have the following menu configuration settings to facilitate user access to Bluetooth® Settings and Radio Profile Configurations.



The Bluetooth® word mark and logos are registered trademarks owned by Bluetooth SIG, Inc.

Android is a trademark of Google LLC.

iOS® is a registered trademark of Cisco in the US and is used by Apple under license.

MOTOROLA, MOTO, MOTOROLA SOLUTIONS and the Stylized M Logo are trademarks or registered trademarks of Motorola Trademark Holdings, LLC and are used under license. All other trademarks are the property of their respective owners.

Please recycle. © 2021, 3M. All rights reserved. All other trademarks are the property of the respective owners. 3M and Scott are trademarks of 3M. Used under license in Canada.



Personal Safety Division
3M Scott Fire & Safety
Monroe Center, P.O. Box 569
Monroe, NC 28111

Telephone: (704) 291-8300
Technical Support: (704) 247-7257
US-3M-ScottMonroeCSR@mmm.com
3M.com/ScottFire
3M.ca/ScottFire (Canada)