

Case Study: 3M™ Clarity™ Aligners

Correction of moderate overbite, class II end on occlusion on left side, and space closure for lower left 1 extraction

Age: 37

Chief concern: Lower incisor needs to be extracted due to resorption and would like the space closed

Case diagnostics: Moderate overbite and moderate mandibular crowding with end on class II occlusion on left and class I occlusion on right. Internal resorption on lower left 1 requiring extraction

Total number of aligners: 61
(39 initial Tx Design, 21 in refinement)

Wear interval: Weekly

Treatment time: 14 months

Case courtesy of:
Dr. Lisa Davison
Powell, OH – USA

Initial

Final

Profile at rest



Face at rest



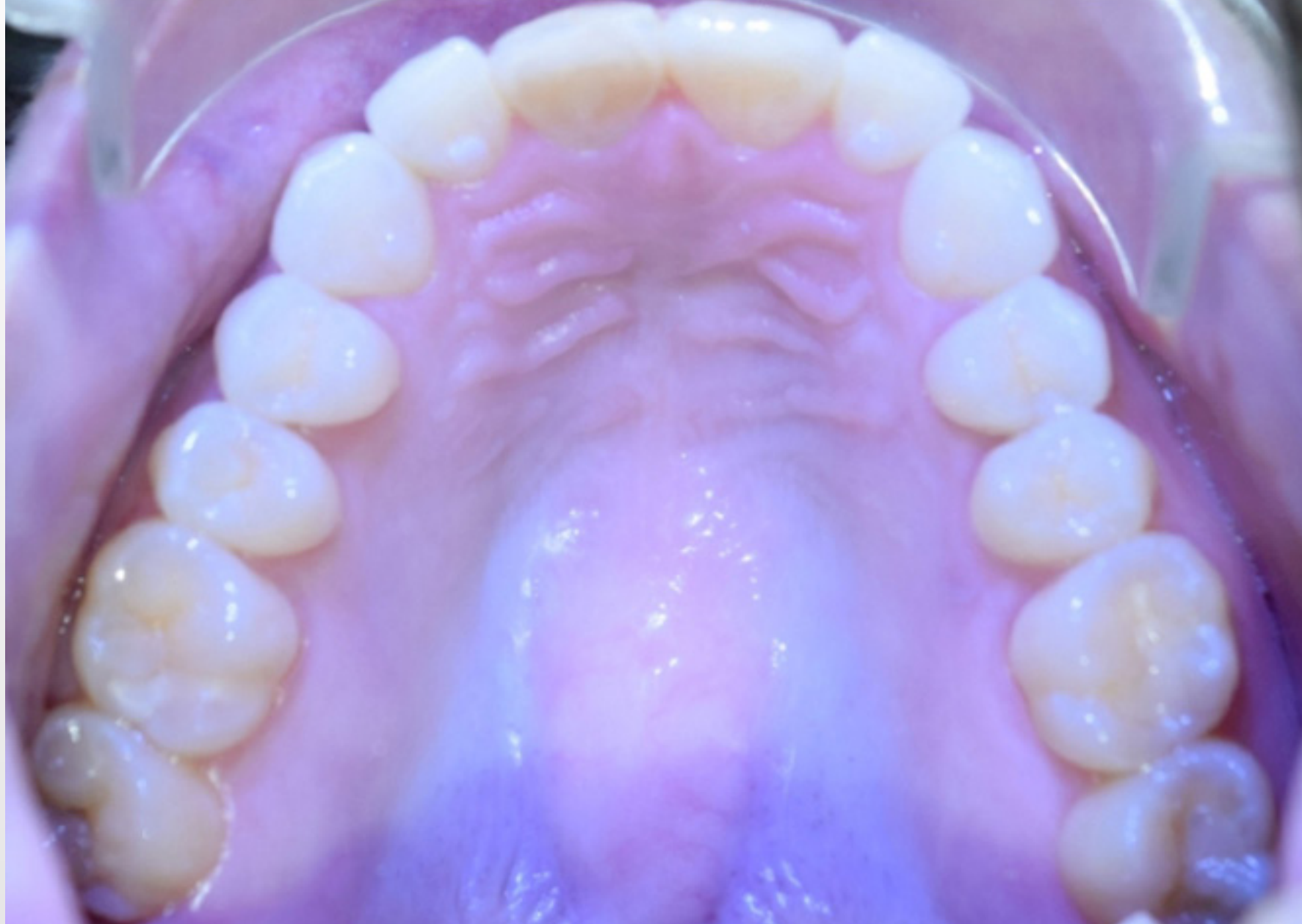
Face smiling



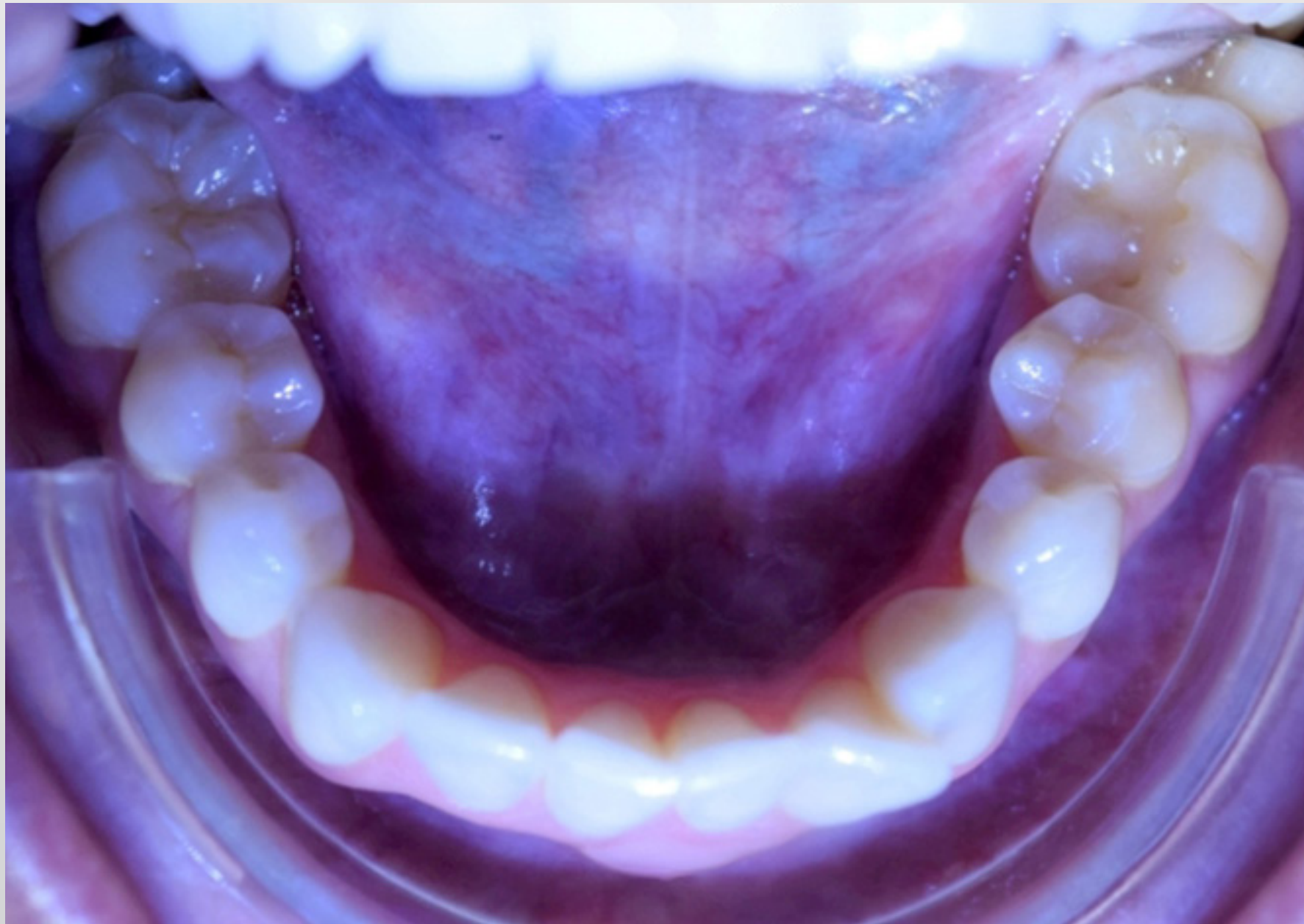
Initial

Final

**Occlusal –
maxillary**



**Occlusal –
mandibular**



Initial

Final

**Retracted
buccal – right**



**Retracted
anterior biting**



**Retracted
buccal – left**



Facial Smile

**Final Bonding with
General Dentist**

Initial



Final

Intraoral Anterior



Panoramic radiograph

Initial



Final



Tx Design Video

- Treatment Plan
- Attachment Strategy
- Key Movements
- Summary of Final Results

Best Fit Overlay

