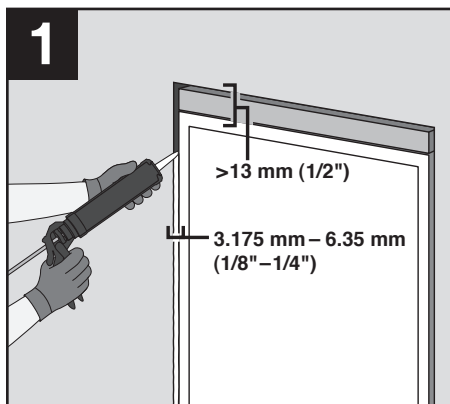


3M™ VentureClad™ Insulation Jacketing Tape 1577CW-WM

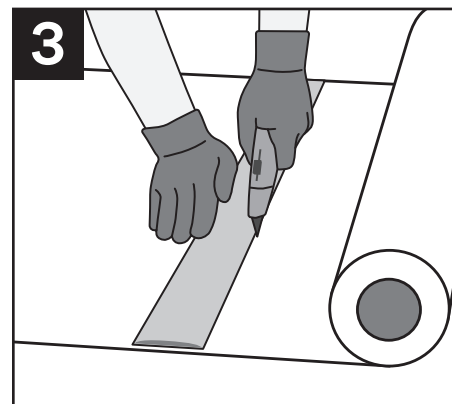
3M™ VentureClad™ Insulation Jacketing Tape 1577CW-WM is an extremely durable, white vapour barrier that can be used as wall and table top coverings in both indoor and outdoor applications. The white, protective outer coating has high chemical resistance and is very easy to clean. 3M™ VentureClad™ Insulation Jacketing Tape has high resistance to ultra violet rays. It can be installed either horizontally or vertically. When the product is installed on walls horizontally, it must be installed starting at the base in a shingled fashion to allow for proper water shed. All seams whether horizontal or vertical must be overlapped by a minimum of 75 mm (3"). All penetrations through the 3M™ VentureClad™ Insulation Jacketing Tape should be sealed with 3M™ Hybrid Sealant 740UV.



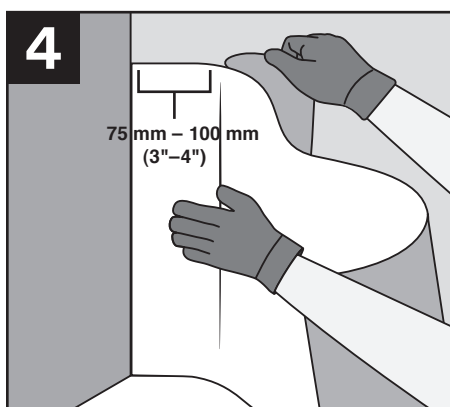
Prepare the wall or horizontal surface prior to applying 3M™ VentureClad™ Insulation Jacketing Tape by repairing cracks, gaps or openings. Up to a 3.175 mm (1/8") gap is acceptable. Openings from 3.175 mm to 6.35 mm (1/8" to 1/4") can be filled with 3M™ Hybrid Sealant 740UV or equivalent. Gaps from 6.35 mm to 13 mm (1/4" to 1/2") may require a backer rod prior to caulking and openings wider than 13 mm (1/2") should be repaired with appropriate substrates.



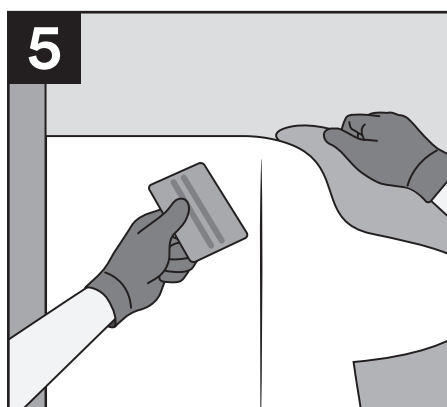
The surface that 3M™ VentureClad™ Insulation Jacketing Tape will be applied to should be cleaned with a lint free cloth and a solution of 50% water and 50% IPA.



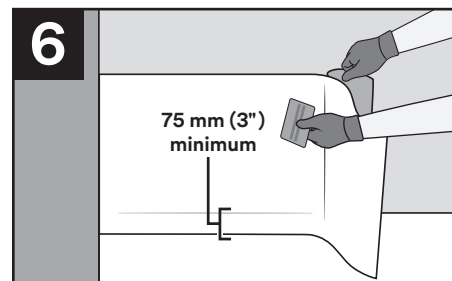
Once the surface is prepared, measure and cut 3M™ VentureClad™ Insulation Jacketing Tape to size.



The adhesive on 3M™ VentureClad™ Insulation Jacketing Tape is very aggressive. During application, peel the liner back only 75 mm to 100 mm (3" to 4") at a time to prevent the product from sticking to unwanted surfaces and from picking up dust or debris.



Once the tape is aligned, gradually remove the liner while applying pressure at the same time with a squeegee. Work the tape from the middle toward the edge to prevent air pockets. Apply firm pressure to the entire surface to ensure adhesion.



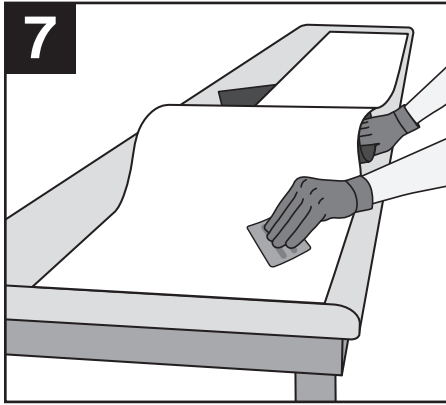
For the following rows, repeat the preceding steps, being sure to overlap the previous row by a minimum of 75 mm (3").

For inside corners, create a centre hinge on 3M™ VentureClad™ Insulation Jacketing Tape. Cut the liner with a blade along the hinge. Align the centre hinge to the inside corner's centre line.

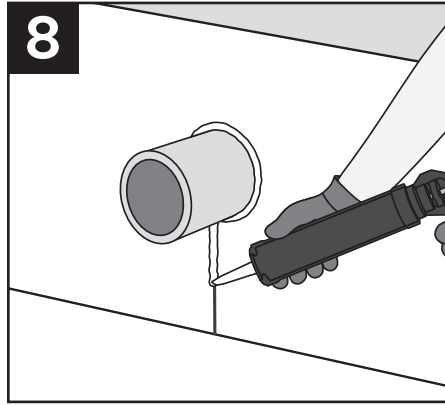
Apply pressure by squeegee, beginning at the centre line and working outward to the closest edge while removing the liner.

Repeat for the other side of the centre hinge.

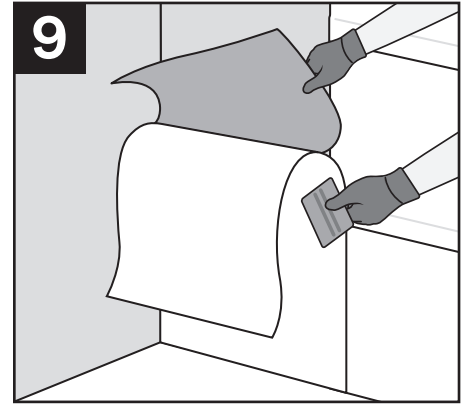
3M™ VentureClad™ Insulation Jacketing Tape 1577CW-WM (cont.)



The same principles apply to flat, horizontal surfaces.



If you need to install around penetrations, slit the 3M™ VentureClad™ Insulation Jacketing Tape 1 to fit around the penetration. The slit can be sealed by either applying a bead of 3M™ Hybrid Sealant 740UV or applying a 100 mm (4") wide piece of 3M™ VentureClad™ Insulation Jacketing Tape over the slit. A bead of sealant is required around the penetration.



It is preferred that 3M™ VentureClad™ Insulation Jacketing Tape is installed horizontally on walls, but vertical is acceptable.

3M™ VentureClad™ Insulation Jacketing Tape 1577CW-WM Installation Best Practices

Surface Preparation/Tips:

- Gaps wider than 3.175 mm (1/8") should be filled or repaired prior to applying 3M™ VentureClad™ Insulation Jacketing Tape.
- Ensure that all surfaces are free from contaminants such as dust, dirt, grease, and water.
- Clean surfaces with a solution consisting of 50% IPA and 50% water.
- When applying, peel back the liner 75 mm to 100 mm (3" to 4") so enough adhesive is available to attach the 3M™ VentureClad™ Insulation Jacketing Tape in the correct position.
- Progressively remove the liner while using a squeegee to smooth and "wet out" the entire sheet being applied. Approximately only 75 mm to 100 mm (3" to 4") of adhesive should be exposed while removing the liner.
- 75 mm (3") overlaps are required to give a strong, moisture proof seal.

Repairing 3M™ VentureClad™ Insulation Jacketing Tape 1577CW-WM if it is damaged:

- 3M™ VentureClad™ Insulation Jacketing Tape requires a 75 mm (3") overlap in all directions.
- Ensure that all surfaces are smooth, free of dust, dirt, grease and water by cleaning with a solution consisting of 50% IPA and 50% water.
- Cut a piece of 3M™ VentureClad™ Insulation Jacketing Tape to size and apply to the damaged area so there will be a minimum 75 mm (3") overlap in all directions. Be sure surface that is being repaired is properly prepared.
- Run a squeegee over the repair to make certain that the 3M™ VentureClad™ Insulation Jacketing Tape is firmly adhered to the 3M™ VentureClad™ Insulation Jacketing Tape.

Learn about 3M's advanced technologies for controlling airflow and optimizing the indoor climate at 3M.ca/Insulation or contact your 3M representative at 1-800-364-3577.



3M Industrial Adhesives and Tapes Division
3M Canada
P.O. Box 5757
London, Ontario N6A 4T1
1-800-364-3577
3M.ca/Insulation

Technical Information: The technical information, guidance, and other statements contained in this document or otherwise provided by 3M are based upon records, tests, or experience that 3M believes to be reliable, but the accuracy, completeness, and representative nature of such information is not guaranteed. Such information is intended for people with knowledge and technical skills sufficient to assess and apply their own informed judgment to the information. No license under any 3M or third party intellectual property rights is granted or implied with this information. **Product Selection and Use:** Many factors beyond 3M's control and uniquely within user's knowledge and control can affect the use and performance of a 3M product in a particular application. As a result, customer is solely responsible for evaluating the product and determining whether it is appropriate and suitable for customer's application, including conducting a workplace hazard assessment and reviewing all applicable regulations and standards (e.g., OSHA, ANSI, etc.). Failure to properly evaluate, select, and use a 3M product and appropriate safety products, or to meet all applicable safety regulations, may result in injury, sickness, death, and/or harm to property. **Warranty, Limited Remedy, and Disclaimer:** Unless a different warranty is specifically stated on the applicable 3M product packaging or product literature (in which case such warranty governs), 3M warrants that each 3M product meets the applicable 3M product specification at the time 3M ships the product. 3M MAKES NO OTHER WARRANTIES OR CONDITIONS, EXPRESS OR IMPLIED, INCLUDING, BUT NOT LIMITED TO, ANY IMPLIED WARRANTY OR CONDITION OF MERCHANTABILITY, FITNESS FOR A PARTICULAR PURPOSE, OR ARISING OUT OF A COURSE OF DEALING, CUSTOM, OR USAGE OF TRADE. If a 3M product does not conform to this warranty, then the sole and exclusive remedy is, at 3M's option, replacement of the 3M product or refund of the purchase price. **Limitation of Liability:** Except for the limited remedy stated above, and except to the extent prohibited by law, 3M will not be liable for any loss or damage arising from or related to the 3M product, whether direct, indirect, special, incidental, or consequential (including, but not limited to, lost profits or business opportunity), regardless of the legal or equitable theory asserted, including, but not limited to, warranty, contract, negligence, or strict liability.

3M, 3M Science, Applied to Life, and VentureClad are trademarks of 3M. Used under license in Canada. © 2021, 3M. All rights reserved.
2102-19530 E