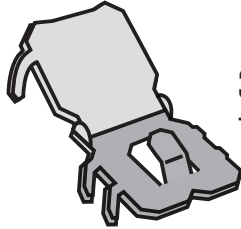


3M

CLAW™

HEAVYWEIGHT HANGING SOLUTION

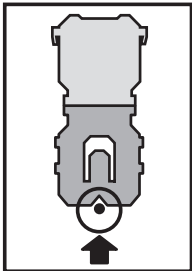
How-To Use



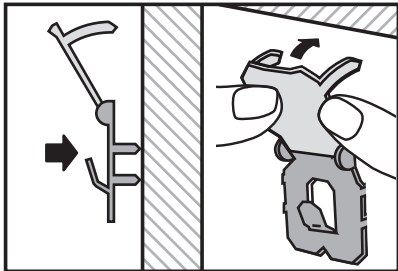
3M™ CLAW Drywall Picture Hanger(s)

To hang your frame.

1 INSTALL HANGER

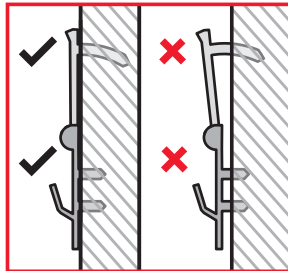


Align notch in bottom of hanger to dot on wall.

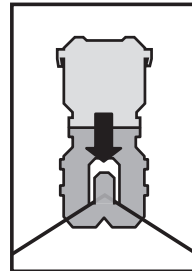


First, push bottom part of hanger straight into wall with thumbs.

Then, push top part in.

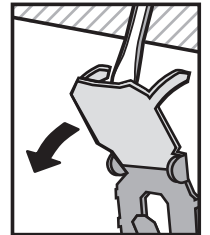


IMPORTANT
Continue to push until top and bottom parts are completely flush against wall.



Hang frame on hook.

REMOVAL



Slide a flat head screwdriver between the hook and wall, then gently pull away.

Please see backcard for additional information.

Issue Date: 2020-10
34-8726-4070-0