



3M™ Versaflo™ S-433/S-533 Hoods

To maintain protection levels, optimise the effective lifetime of the system and avoid the additional cost of replacement, it is extremely important to carry out regular checks and maintenance.

► Before Use

- Inspect Comfort Band. Remove and replace if necessary.
- Inspect hood. Ensure elasticated edges are intact, fabric is free from splits or tears and visor is undamaged. Discard and replace hood if necessary.
- Replace Visor Peel-Off (if used).

► Monthly

- Carry out all the 'Before Use' inspections and create record of this monthly check for the hood.

► After Use

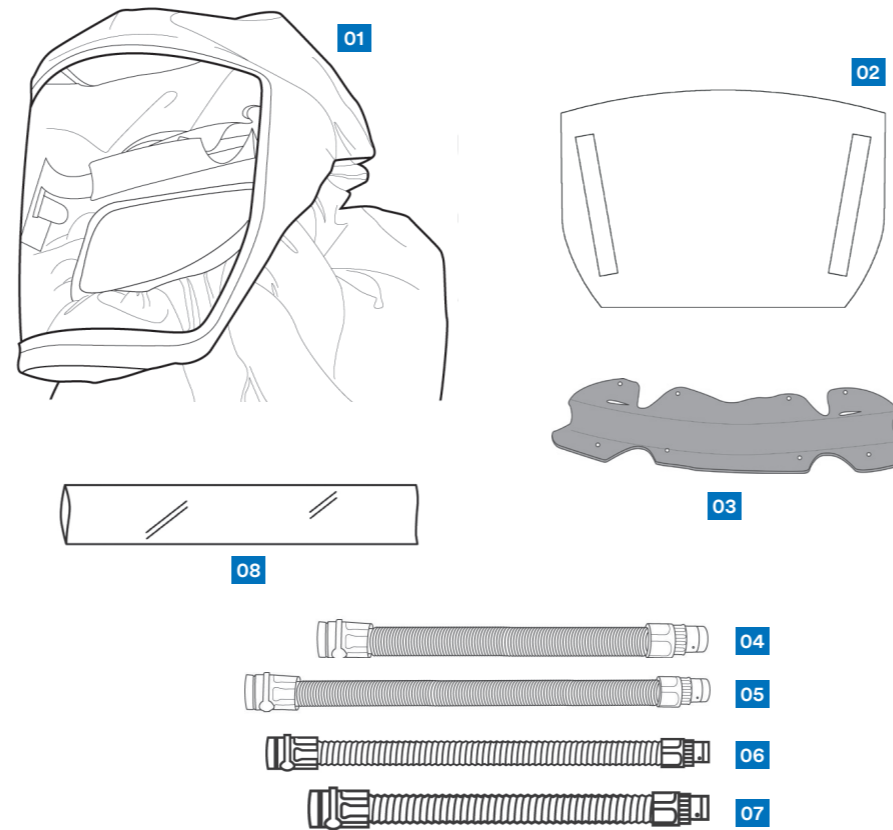
- Clean with cloth dampened with a mild solution of water and liquid household soap.
- Disinfect with 3M 105 Wipes.
- Store in a dry, clean area / locker away from direct sunlight, high temperatures and solvents.

► Ordering Consumables, Repair Parts and Accessories

To request a quote or place an order for these items, please contact your 3M Approved Distributor.

► Further Information and Advice

If you require additional guidance on the Care and Maintenance of your 3M Powered and Supplied Air Equipment, please contact the Helpline or your local 3M representative.



Description		Part N°
01	S-433S Headcover (small)	S-433S
01	S-433L Headcover (large)	S-433L
01	S-533S Headcover (small)	S-533S
01	S-533L Headcover (large)	S-533L
02	Visor Cover for Integrated Harness Products, small/medium (x4)	S-920S
02	Visor Cover for Integrated Harness Products, medium/large (x4)	S-920L
03	Comfort Pad for Integrated Head Suspension Products small/medium	S-957S
03	Comfort Pad for Integrated Head Suspension Products medium/large	S-957L
04	Breathing Tube, small/medium	BT-20S
05	Breathing Tube, medium/large	BT-20L
06	Length Adjusting Breathing Tube	BT-30
07	Heavy Duty Rubber Breathing Tube	BT-40
08	Disposable Breathing Tube Cover	BT-922

Hoods made from coated fabric with replaceable comfort band. Combines face (low energy impact and liquid splash), neck, shoulder and respiratory protection.

Replace all damaged parts immediately to ensure correct levels of protection.

