

PREVENA RESTOR™

INCISION MANAGEMENT SYSTEM

Management of Double Mastectomy with PREVENA RESTOR BELLA•FORM™ Incision Management System

Allen Gabriel, MD, FACS; Global Surgical Consulting; Camas, WA

Patient

A 50-year-old female patient presented to the surgical clinic requiring bilateral mastectomy for breast cancer (**Figure 1**). She had no notable prior medical history.

Procedure

The patient underwent a bilateral mastectomy with immediate reconstruction, resulting in a 7-cm inframammary incision on each breast. The incisions were sutured closed over drains, and the patient was administered cephalexin for prophylactic antibiotic control.

Application

PREVENA RESTOR™ Therapy was initiated using PREVENA RESTOR BELLA•FORM™ Dressing, which covered each inframammary incision and the entirety of each breast (**Figure 2**). Negative pressure was applied at -125mmHg.

Discharge and Follow-up

The patient was discharged home the day after surgery. After 6 days, PREVENA RESTOR™ Therapy was discontinued, and the incision remained closed (**Figure 3**). When the patient returned for follow-up on postoperative day 9, there were no complications and the drain was removed (**Figure 4**). At 30 days post-surgery, the incision remained closed, and there was no incidence of surgical site infection, seroma, or any other complication.

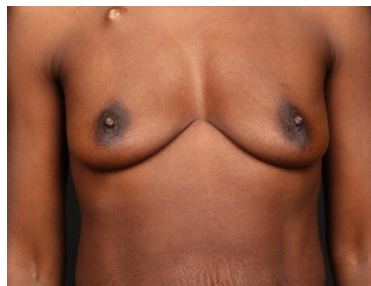


Figure 1. Breast appearance pre-mastectomy.



Figure 2. Application of PREVENA RESTOR™ Therapy with PREVENA RESTOR BELLA•FORM™ Dressing post mastectomy.

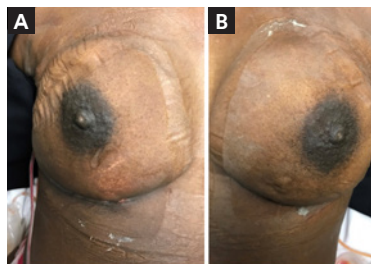


Figure 3. Appearance after 6 days of PREVENA RESTOR™ Therapy with PREVENA RESTOR BELLA•FORM™ Dressing. A) Right breast. B) Left breast.

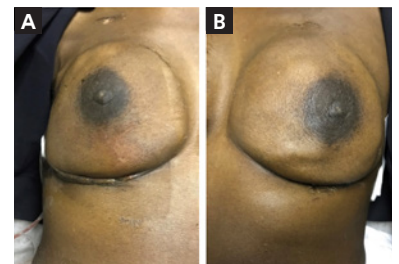


Figure 4. Appearance on postoperative day 9. A) Right breast. B) Left breast.

The PREVENA RESTOR BELLA•FORM™ System is suitable for a variety of anatomical locations

Patient data and photos courtesy of Allen Gabriel, MD, FACS; Global Surgical Consulting; Camas, WA

NOTE: As with any case study, the results and outcomes should not be interpreted as a guarantee or warranty of similar results. Individual results may vary, depending on the patient's circumstances and condition.

NOTE: Specific indications, contraindications, warnings, precautions and safety information exist for these products and therapies. Please consult a clinician and product instructions for use prior to application. This material is intended for healthcare professionals.

© 2020 3M. All rights reserved. 3M and the other marks shown are marks and/or registered marks. Unauthorized use prohibited. PRA-PM-EU-00328 (07/20)