



Filtek™

Supreme
Flowable Restorative

Giving you the upper hand
with our new syringe design



Now our most popular flowable is easier to inject

3M™ Filtek™ Supreme Ultra Flowable Restorative is available in a new ergonomic syringe. Designed for improved comfort and injection molding, we're calling our new product 3M™ Filtek™ Supreme Flowable Restorative.

Reduce bubbles and waste

Virtually no bubbles or material "run-on" during dispensing gives you better control.

Easy to hold and inject

Triangle finger plate and plunger make it quick and easy to personalize your grip.

No more guessing

The blue syringe barrel indicates the remaining material volume. When your syringe is empty, only the white plunger shows.

Bendable cannula

Easy-to-bend without kinking for better access.

Excellent adaptation

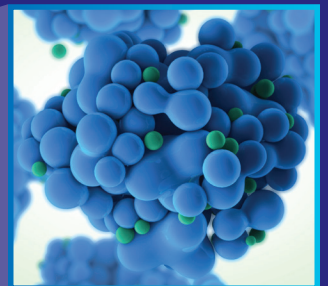
Excellent adaptation, polish retention and wear resistance.

Versatile

A wide range of indications and techniques.



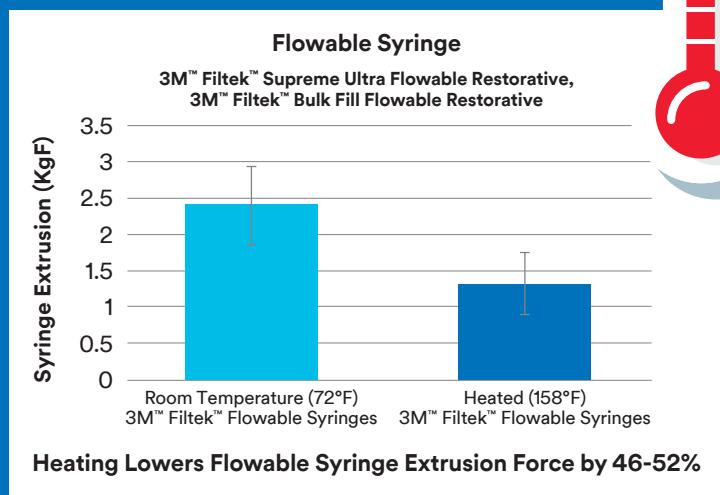
3M's popular flowable is made with TRUE nanotechnology. This patented technology makes the nanoparticles more uniform in size, resulting in excellent wear resistance and polished retention.



Warm with confidence

Why warm 3M Composites?

- Warmed composites are more fluid, for easier handling
- Warming may improve adaptation of 3M composite to tooth structure¹
- Warming lowers extrusion force²



Tips for success

You can safely warm Filtek Restoratives in as little as 5 minutes! Follow these general guidelines, and refer to the instructions for use for more information.

DO

DO heat flowable syringes up to 70°C (158°F) for up to 1 hour, up to 25 times.

DO only use commercially available composite warmer devices.

DO consult the Instructions for Use for more information.

DO NOT

Do NOT use heat from a light bulb, microwave, mug warmer or other unapproved heating devices. Consult the Instructions for Use for more information.

Get performance with peace of mind

Physical Properties Unchanged:³

- Diametral tensile strength
- Flexural modulus
- Flexural strength
- Color stability
- Depth of cure



*Recommended heating temperature

1 Based on a 3M sponsored in vitro study. 11 dentists placed 88 Class II MOD restorations. Teeth were microscopically exemplified for flaws, defects and voids. Comparisons made between techniques and operators.

2 3M Internal Data

3 When warmed according to our IFU (up to 70°C or 158°F for up to 1 hour).

A shade-matched palette

3M™ Filtek™ Supreme Flowable Restorative shades are formulated to be an identical match to 3M™ Filtek™ Z350 XT Universal Restorative.(A2, A3, OA3, A4)



3M™ Filtek™ Supreme Flowable Restorative



3M™ Filtek™ Z350 XT Universal Restorative



Clinical cases

3M™ Filtek™ Supreme Flowable Restorative offers a smooth transition from material to tooth for esthetic restorations.



Before



Flowable placement



After

Photos courtesy of Dr. Gunnar Reich, Munich, Germany

Filtek Supreme Flowable Restorative adapts easily and seals the margin.



Before



Flowable placement



After

Photos courtesy of Dr. Giuseppe Chiodera, Brescia, Italy

Indications

(Incremental up to 2 mm)



Class III



Class V



Minimally Invasive
Dentistry (MID)¹



Base



Liner



Repair of Indirect
(small defects)



Repair²



Undercut
Block-out



Pit & Fissure
Sealant

Refer to Instructions for Use for
full list of indications.

Ordering information



3M™ Filtek™ Supreme Flowable Restorative Refills
Syringe refills include: 2 – 2g syringes;
20 dispensing tips.

SHADE	ITEM NO.
A2	7032A2
A3	7032A3
A4	7032A4
OA3	7032OA3

ITEM NO.	PRODUCT INFO.
3700T	3M™ Filtek™ Supreme Flowable Restorative Dispensing Tips, 20g, Gray (20)



3M Oral Care Indonesia
Perkantoran Hijau Arkadia, Menara F Lt. 8
Jalan TB Simatupang Kav. 88, Jakarta Selatan - 12520

Office +621 2997 4000
Phone +62 813 1554 0844
Web 3M.co.id/3M/en_ID/dental-id

3M and Filtek are trademarks of 3M
Company. © 2019. All rights reserved.