

3M Science.
Applied to Life.™

Clinical Guidelines - a reference source for clinicians

3M™ Snap™ Therapy System



3M™ Snap™ Therapy System in 10 minutes:¹

Take off-the-shelf. Apply. Go.

The Snap Therapy System delivers clinically proven -125mmHg continuous negative pressure while also being wearable. This discreet and silent wearable therapy complements patient activities of daily living and helps support patient quality of life.¹

With a simple, pre-set device, disposable negative pressure wound therapy (dNPWT) is easy on the patient which may lead to improved patient compliance.¹

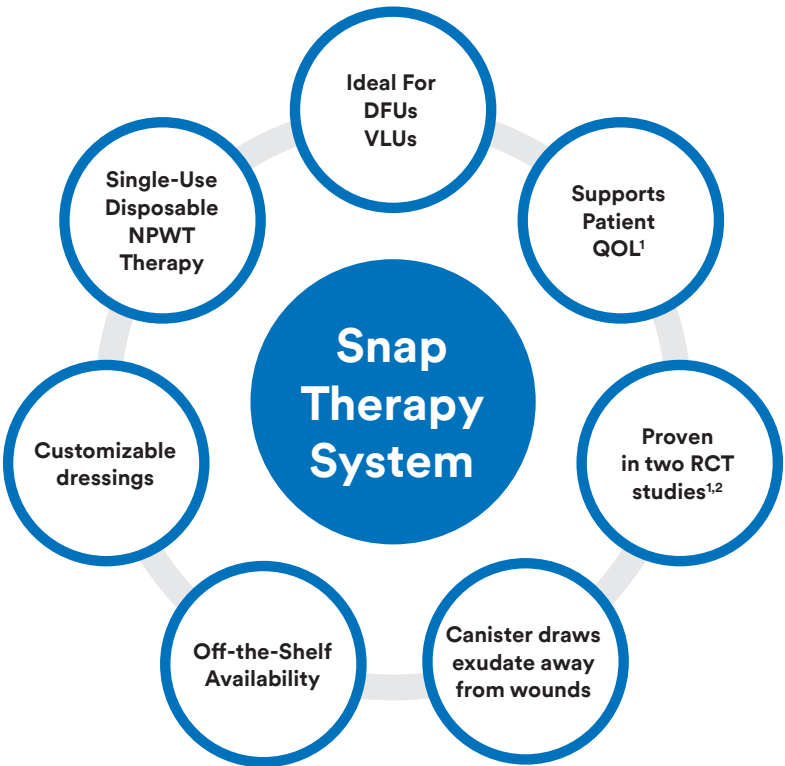


Table of contents

Benefits of the 3M™ Snap™ Therapy System.....	2
FDA Indications and contraindications for use	5
When to choose 3M™ Snap™ Therapy System.....	7
Precautions and warnings.....	9
Snap Therapy System overview.....	14
3M™ Snap™ Therapy Cartridge.....	15
3M™ Snap™ Advanced Dressings	16
3M™ Snap™ Therapy System application and activation.....	18
Resetting/replacing the 3M™ Snap™ Therapy Cartridge.....	26
Cleaning instructions.....	29
Troubleshooting.....	30
Physician instructions.....	31
3M™ Snap™ Advanced Dressing application tips & tricks.....	33
Appendix	
Introductory skills validation for the safe use of the 3M™ Snap™ Therapy System.....	42
Clinical skills checklist	44
Ordering information.....	52

These guidelines are not intended as a guarantee of results, outcome, or performance of the Snap Therapy System. As with any application, please consult with the patient's lead clinician about individual conditions and treatments. Follow all applicable manuals and reference guides as to product use and operation.

Always consult sections of this booklet and any other product labeling and instructions before applying these products and therapies.

Contact your local representative if you have any questions about operation or use. For further information visit 3M.com.

Caution: Federal (USA) Law restricts this device to sale by or on the order of a physician.

The 3M™ Snap™ Therapy System wearable dNPWT

Combines the simplicity of advanced wound dressings with the proven efficacy¹ of negative pressure therapy in a discreet design.

- Mechanically powered and portable for patient mobility
- No settings or adjustments for patient to learn
- Preserved patient QOL¹
- Discreet and worn under clothing
- Silent design minimizes sleep interruptions
- Continuous -125mmHg therapy
- Single-use, disposable NPWT
- Off-the-shelf availability



3M™ Snap™ Therapy System

FDA indications and contraindications for use

Indications for use

The Snap Therapy System is indicated for patients who would benefit from wound management via the application of negative pressure, particularly as the device may promote wound healing through the removal of excess exudate, infectious material and tissue debris.

The Snap Therapy System is indicated for removal of small amounts of exudate from chronic, acute, traumatic, sub-acute and dehisced wounds, ulcers (such as diabetic, venous or pressure), surgically closed incisions, flaps and grafts.

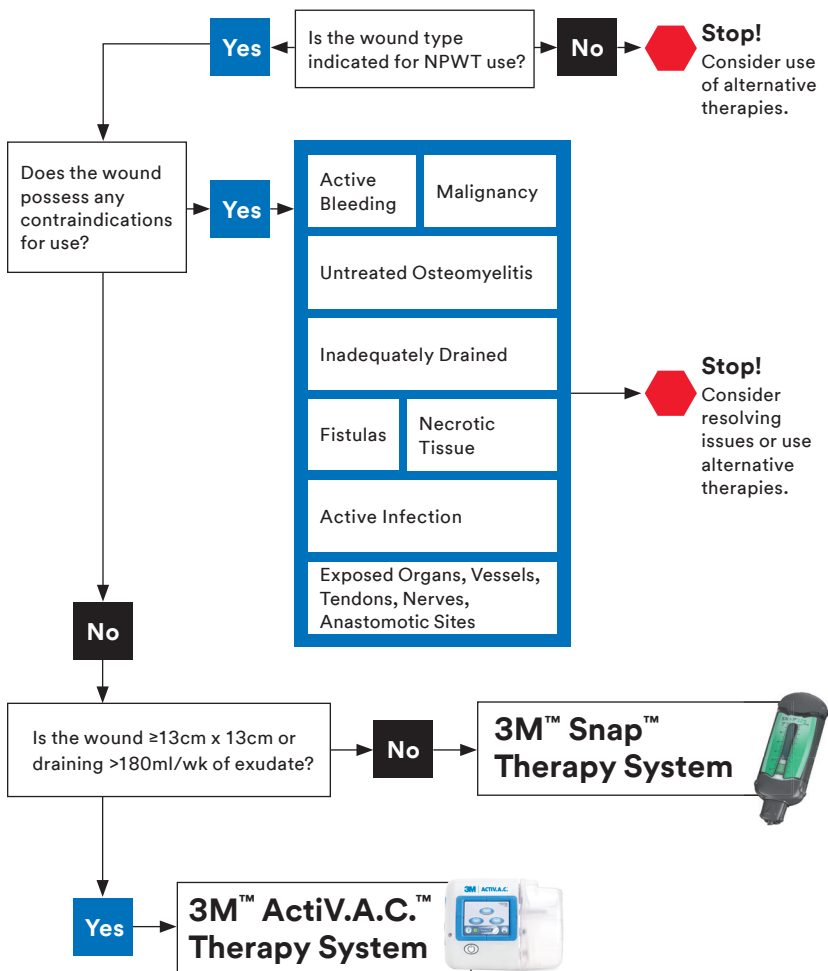
Contraindications for use

Do not place the Snap Therapy System over:

- Inadequately drained wounds
- Necrotic tissue such as eschar or adherent slough
- Exposed blood vessels, anastomotic sites, organs, tendons, or nerves
- Wounds containing malignancy
- Fistulas
- Untreated osteomyelitis
- Actively bleeding wounds

Wound criteria/clinical considerations

NPWT Algorithm for clinicians



Wound criteria/clinical considerations

3M™ Snap™ Therapy System



3M™ ActiV.A.C.™ Therapy System



Wound size

≤ 13cm x 13cm

> 13cm x 13cm

Wound drainage

≤ 180ml/week

(unless using 3M™ Snap Plus™ Cartridge)

> 180ml/week

Additional considerations

Consider for active, ambulatory, or elderly patients.

Wound size or drainage requires the ActiV.A.C. Therapy System. Consider the Snap Therapy System as wound size and drainage decreases.

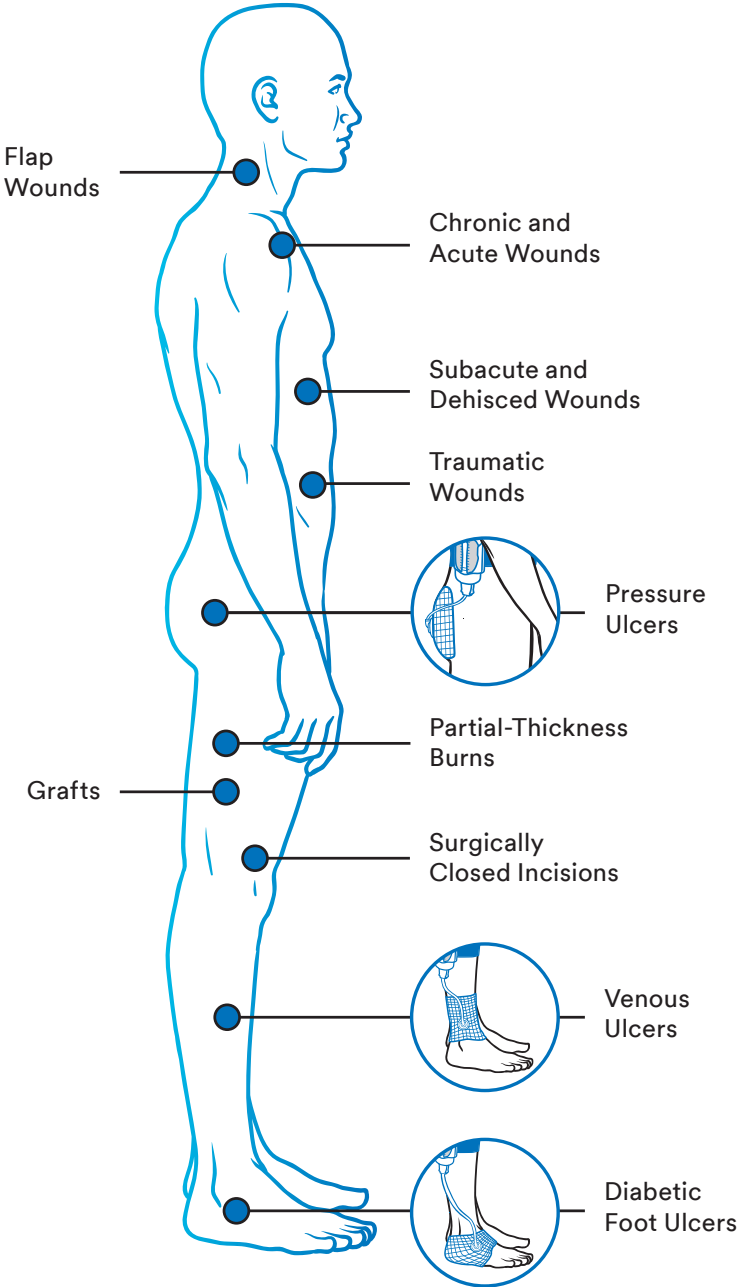
NPWT Initiation coverage criteria*

New wound; First line treatment; Day 1

Previously treated with modern wound care; > Day 30

These Wound criteria / clinical considerations are provided to help determine when to use Snap Therapy System/ActiV.A.C Therapy System. They are not intended to replace the judgment and expertise of the treating physician. * May vary by payor.

The 3M™ Snap™ Therapy System is indicated for removal of small amounts of exudate from:



Precautions

- Patient size and weight should be carefully considered when prescribing the 3M™ Snap™ Therapy System.
- Position the 3M™ Snap™ Therapy Cartridge and tubing to prevent risk of tripping. Tubing can be cut to fit.
- To reduce the transmission risk of bloodborne pathogens, apply standard precautions for infection control with all patients, per institutional protocol. In addition to gloves, use gown and goggles if exposure to body fluids is likely.
- The Snap Therapy System may not be appropriate for treatment of noncompliant or combative patients.
- Patients may shower while using the Snap Therapy System. Do not allow the Snap Therapy System to be submerged.
- The 3M™ Snap™ Therapy Cartridge and 3M™ Snap™ Therapy Strap are provided non-sterile and should not be sterilized.
- The 3M™ Snap™ Therapy Cartridge and 3M™ Snap™ Advanced Dressings should be stored at room temperature. Do not expose to excessive cold or heat.

Warnings

It is a condition of use that the 3M™ Snap™ Therapy System will be operated under the supervision of a qualified and authorized clinical caregiver and that the user has the necessary training and knowledge of the specific medical application for which the Snap Therapy System is being used. Failure to follow these conditions and/or to carefully read and follow all the therapy unit usage and dressing application instructions and the safety information prior to each use may lead to improper device performance and the potential for serious or fatal injury.

- The Snap Therapy System has not been studied on pediatric patients.
- For single patient use only. Do not reuse, reprocess or resterilize. Reuse, reprocessing, or resterilization will compromise the structural integrity of the device and/or lead to device failure which, in turn, may result in patient injury or illness.
- Do not use the 3M™ Snap™ Advanced Dressings on patients who are allergic to adhesives.
- Do not compress contained wound exudate of gelled material when resetting the 3M™ Snap™ Therapy Cartridge to prevent expulsion of exudate or gelled material.
- Never leave the Snap Advanced Dressing in place without active negative pressure therapy unless under clinical supervision. If the red indicator becomes visible, negative pressure is no longer active.
- Fluid and electrolyte loss may result from highly exudative wounds. Close monitoring of electrolytes may be indicated in such cases.
- Patients with severe malnutrition may be at higher risk for fluid loss from their wounds and may require more frequent monitoring.

Bleeding and infection

- Complete hemostasis should be achieved prior to use of the system as bleeding may interfere with the normal function of the 3M™ Snap™ Therapy System.
- Extra care and monitoring is required for patients who are on anticoagulants or platelet-aggregation inhibitors because bleeding may interfere with the normal function of the Snap Therapy System.
- Snap Advanced Dressings should not be placed on actively infected wounds or bone as this may worsen infections. Infection can be severe and result in septic or toxic shock and/or fatal injury.
- Clinicians, caregivers, and patients should frequently monitor the patient's wound, surrounding tissue, and secreted exudate for signs of infection or other secondary conditions such as maceration or tissue necrosis.

Protect vessels and delicate tissues

- Sharp edges, such as bone fragments, should be removed from the wound treatment area prior to placing the Snap Advanced Dressing due to risk of puncturing the Snap Advanced Dressing which will impair the proper function of the Snap Therapy System, or could puncture blood vessels, or organs resulting in injury.
- Do not place the Snap Therapy System on the vagus nerve to avoid inducing bradycardia.
- Do not place the Snap Therapy System on friable vessels or infected blood vessels. Infected or weakened vessels are more prone to damage, potentially resulting in bleeding which will interfere with the function of the system.
- Care should be exercised if using the Snap Therapy System on spinal cord injury patients; stimulus from placement, initiation or cessation of negative pressure may cause autonomic hyperreflexia.

Warnings (cont.)

- If a patient experiences autonomic dysreflexia, discontinue use of the Snap Therapy System and seek medical assistance.

Use of 3M™ Snap™ Advanced Dressings

- Discard if packaging is open or damaged.
- Do not place the dressing material into blind tunnels.
- Do not place the primary foam interface in direct contact with delicate structures such as tendons, ligaments, and nerves. Use of a wide-mesh, non-adherent, bio-engineered tissue or natural tissue structures should be utilized to cover and protect delicate structures.
- During initial placement of the foam interface, count the total number of pieces placed in the wound and document this number per facility protocol.
- During removal of the Snap Advanced Dressing, ensure that all pieces, as documented during initial placement, and any fragments are removed from the wound. Unintentional dressing material retention for longer time periods than recommended may result in infection or other adverse events.
- It is recommended that Snap Advanced Dressing is changed at a minimum of two times per week, with frequency adjusted by the clinician as appropriate.
- To prevent ischemia, the Snap Advanced Dressing should not be circumferentially placed around appendages, and the 3M™ Snap™ Therapy Strap should be worn as loosely as possible.
- Snap Advanced Dressing should be removed prior to defibrillation if near the area of pad/paddle placement.

Magnetic Resonance Imaging (MRI)

- **Do not** use inside an MRI suite. The 3M™ Snap™ Therapy Cartridge is not safe for use with magnetic resonance imaging (MRI) equipment.

Hyperbaric Oxygen Therapy (HBO)

- Do not take the Snap Therapy Cartridge, 3M™ Snap™ Therapy Strap, or tube fitting into a Hyperbaric Oxygen (HBO) chamber as they have not been studied for use in this environment and could be considered a fire hazard.
- After disconnecting the Snap Advanced Dressing tubing from the tube fitting, cover the open end of the tubing with cotton gauze. Alternatively, replace the Snap Advanced Dressing with another HBO compatible material during the hyperbaric treatment.
- To resume negative pressure therapy after HBO treatment, remove gauze from the tubing, cut 5mm (0.2in) off the tubing end to expose fresh tubing, and reinsert into the Tube Fitting.
- To reset the 3M™ Snap™ Therapy Cartridge, refer to section: Resetting the Snap Therapy Cartridge.

3M™ Snap™ Therapy System at a glance

- Wearable, discreet and light dNPWT device (0.1kg)
- -125mmHg continuous pressure (-100mmHg, -75mmHg available)
- Dressings
 - Wound interface layer: reticulated open cell foam (blue)
 - Sealant layer: proprietary hydrocolloid layer with integrated tubing port
- Cartridge: disposable therapy unit integrated with exudate containment unit, 60ml (150ml @ -125mmHg available)
- Visual Alarms: red visual indicator displays when loss of negative pressure is present
- Audible Alarms: none



Snap Therapy System wound criteria:

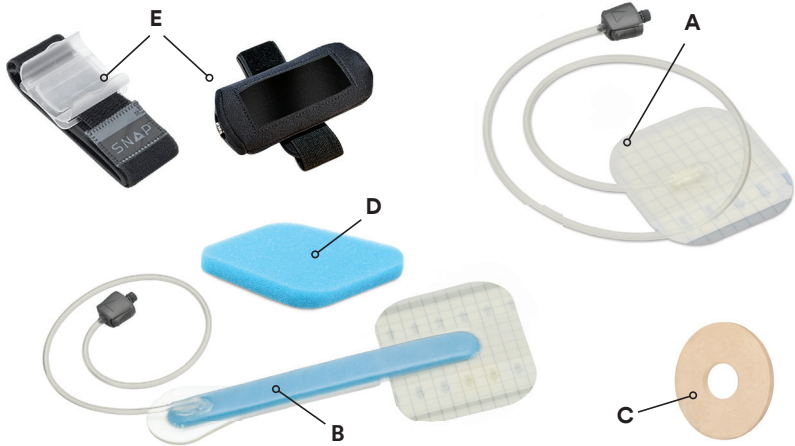
- Location: non-weight bearing area
- Exudate: small to moderate (<20ml/day)
- Size: 13cm x 13cm (or smaller)
- Depth: approximately 0.5cm - 1.0cm, no minimum depth restriction
- Dressing: minimum customization required

3M™ Snap™ Therapy Cartridge

- Silent, lightweight design is discreet under clothing.
- Proprietary spring mechanism generates consistent, even levels of pressure.
- Green visual indicator displays when therapy is active.
- Red visual indicator displays when cartridge is full or discharged.
- 60cc fluid capacity with technology to gel exudate.



3M™ Snap™ Dressings



(A) 3M™ Snap™ Advanced Dressing and (B) 3M™ Snap™ Bridge Dressing

- Proprietary, thin hydrocolloid dressing offers periwound protection, robust seal, and easy removal.
- Naturally occurring adhesive, carboxymethyl cellulose (CMC).
- No picture-framing required.
- Cut-to-fit dressing with measured grid for accurate length/width wound measurements.
 - Low-profile, integrated microport for flexibility and tight bending radius for difficult anatomies.
 - Integrated check-valve prevents reflux of exudate.
 - Tube fitting release valve.
 - Cut-to-length tubing helps reduce trip hazards.

(C) 3M™ Snap™ SecurRing™ Hydrocolloid Skin Barrier

- Fast and easy sealing on uneven skin surfaces and challenging body contours.
- Reduces accessories needed to seal and protect the wound from moisture.
- Increases adhesion of the Snap Advanced Dressing on dry and uneven skin.

(D) Reticulated Open Cell Foam Interface (Blue)

- Purposefully designed 40–50 PPI (Pores Per Inch) open cells to evenly distribute -125mmHg pressure across the wound bed.
- Facilitates the lifting and channeling of exudate and infectious materials away from the wound bed and into the canister.

(E) 3M™ Snap™ Therapy Strap and 3M™ Snap™ Plus Therapy Strap (each available in three sizes)

- Clip



3M™ Snap™ Advanced Dressing and 3M™ Snap™ Bridge Dressing are statistically similar to the 3M™ V.A.C.® Granufoam™ Dressing

3M™ Snap™ Therapy System application and activation

All wounds are unique. The treating clinician should make an individual assessment of the optimal dressing and application method. Inspect all packaging before use and do not use products from packages that are open or damaged.

You will need the following dressing items:

1. Reticulated open cell foam interface (blue).
2. 3M™ Snap™ Advanced Dressing Kit.

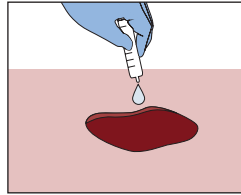
Optional items:

1. 3M™ Snap™ SecurRing™ Hydrocolloid Skin Barrier.
2. Non adherent dressing such as 3M™ Adaptic™ Touch Non-Adhering Silicone Dressing.

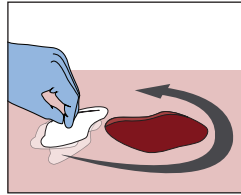
3M™ Snap™ Advanced Dressing basic application steps

For Snap Advanced Dressing advanced application please see the Tips and Tricks section on pg. 33.

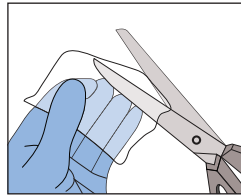
- 1** **Step one**
Prepare the wound bed and periwound skin per institutional protocol and irrigate wound bed thoroughly with normal saline.



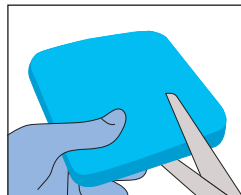
- 2** **Step two**
If necessary, apply a skin protectant to the surrounding skin and allow to dry.



- 3** **Step three**
If necessary, cut a single layer of wide-mesh, non-adherent dressing to the size of the wound and place on the wound bed.



- 4** **Step four**
Cut the foam interface to fit the size and shape of the wound.



Application steps (cont.)

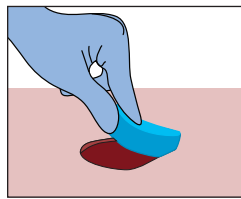
Tips:

- Do not cut foam directly over wound bed to avoid loose fragments from falling into wound.
- Brush off foam edges after cutting to remove any loose fragments.

5

Step five

Place foam interface into wound cavity. Foam interface should fill the wound cavity and extend above the wound margins. Do not over pack.



Tips:

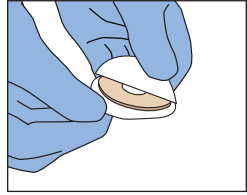
- Count and record the number of pieces of foam interface used to ensure the same number of pieces are removed during dressing change.
- Do not place foam into blind or unexplored tunnels. If a piece of foam is used in a tunnel, ensure the foam is visible and in contact with foam in the primary wound bed.

Application steps (cont.)

6

Step six

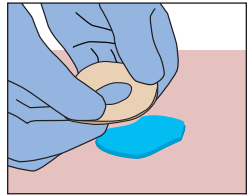
If necessary, remove the 3M™ Snap™ SecurRing™ Hydrocolloid Skin Barrier from packaging. Remove release liner from both surfaces.



7

Step seven

If necessary, gently mold, stretch, compress or roll the Snap™ SecurRing™ Hydrocolloid Skin Barrier to any shape to fit around the outside of the wound, leaving approximately 1 cm of intact skin between the Snap™ SecurRing™ Hydrocolloid Skin Barrier and the wound margin.



Tips:

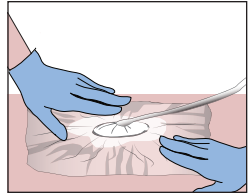
- For smaller wounds, a portion of the Snap™ SecurRing™ Hydrocolloid Skin Barrier can be used.
- The Snap™ SecurRing™ Hydrocolloid Skin Barrier may be pulled apart and rejoined to better fit around the wound.

Application steps (cont.)

8

Step eight

Remove backing and place the 3M™ Snap™ Advanced Dressing over the wound and seal.



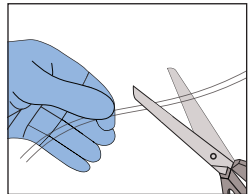
Tips:

- Place the center opening of the port on the Snap Advanced Dressing over the foam interface.
- Leave 1.5cm border around port.
- To maintain a proper seal, a minimum of 1cm of intact skin around the wound should be adhered to the Snap Advanced Dressing.

9

Step nine

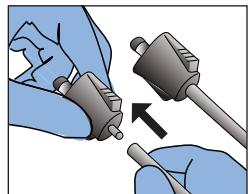
At a right angle, cut the dressing tubing to the desired length, if required.



10

Step ten

Fully insert the Tube Fitting into the tubing.

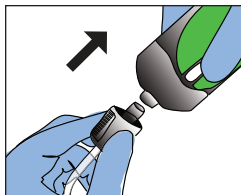


Application steps (cont.)

11

Step eleven

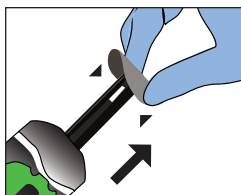
Connect the 3M™ Snap™ Therapy Cartridge to the tube fitting using both hands.



12

Step twelve

To activate the Snap Therapy Cartridge, push down the activation/reset key to release and remove the key from the Snap Therapy Cartridge. The Snap Therapy Cartridge may need to be primed multiple times depending on size of the dressing.



Tips:

- Snap Advanced Dressing basic cutting techniques
 1. Each square is 1 cm marking.
 2. Minimum of 1–2 cm intact hydrocolloid is necessary to obtain durable seal.
 3. Prior to cutting, consider tubing placement to ensure efficient pressure flow and reduce tripping hazard.

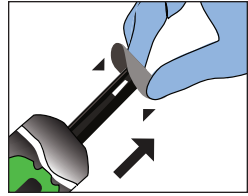
Application steps (cont.)

13

Step thirteen

Check negative pressure operation. The 3M™ Snap™ Therapy System is working properly if:

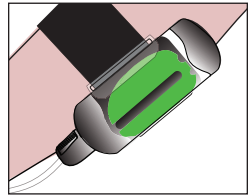
- Green capacity indicator is both visible and stationary in the chamber window
- Dressing has a “sucked down” appearance
- Dressing feels hard to the touch



14

Step fourteen

Secure the 3M™ Snap™ Therapy Cartridge to the patient's extremity or belt using the 3M™ Snap™ Therapy Strap (if being utilized).



Tips:

- Take care to ensure that the Snap Therapy Strap is not placed too tightly on the extremity, as this may cause discomfort or potentially decrease blood flow. Distal perfusion may be assessed by noting skin color, altered sensation, or pulses.

Recommended care

Regularly inspect the 3M™ Snap™ Therapy System so that any loss in negative pressure delivery can be recognized in a timely manner.

- Inspect the 3M™ Snap™ Therapy Cartridge a minimum of once every 8 hours to ensure green indicator is visible and stationary.
- Change the 3M™ Snap™ Advanced Dressing a minimum of two times per week, with frequency adjusted by the clinician as appropriate.

Resetting the 3M™ Snap™ Therapy Cartridge if loss of negative pressure is present

The Snap Therapy Cartridge can be reset as needed according to these instructions as required for clinical use, including resetting after HBO therapy.



If the Snap Therapy Cartridge becomes retracted and the red pressure discharge indicator becomes visible before an airtight seal is established, reset the Snap Therapy Cartridge using the following steps:

1

Step one

Insert the activation/reset key into the slot on the end of the Snap Therapy Cartridge and push the activation/reset key forward into the Snap Therapy Cartridge until the capacity indicator is 5ml from any exudate or gelled material in the Snap Therapy Cartridge.

2

Step two

To activate the Snap Therapy Cartridge, push down the activation/reset key to release and remove the key from the Snap Therapy Cartridge. The Snap Therapy Cartridge may need to be primed multiple times depending on size of the dressing.

Resetting the 3M™ Snap™ Therapy Cartridge if leak is present (cont.)



Airtight seal is present at wound if:

- Green capacity indicator is both visible and stationary in the chamber window
- Dressing has a “sucked down” appearance
- Dressing feels hard to the touch

Tips:

- If a problem exists after resetting the Snap Therapy Cartridge, refer to Troubleshooting Chart.
- Do not compress contained wound exudate or gelled material when resetting the Snap Therapy Cartridge to prevent expulsion of exudate or gelled material which should be treated as biomedical waste and disposed of per institutional guidelines.

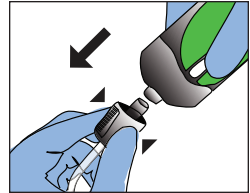
Replacing the 3M™ Snap™ Therapy Cartridge if full due to exudate

If the red pressure discharge Indicator is visible, the Snap Therapy Cartridge no longer has negative pressure delivery capacity and must be replaced with a new Snap Therapy Cartridge by following the steps below.

1

Step one

Remove the tube fitting from the Snap Therapy Cartridge by pressing the release buttons and pulling the tube fitting out of the Snap Therapy Cartridge.



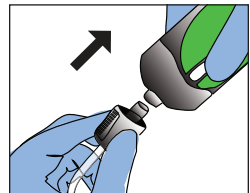
Tips:

- Do not remove the tubing from the tube fitting.
- Do not remove the cap at the end of the tube fitting.
- During dressing changes, evaluate level of exudate in cartridge to determine if cartridge should be replaced.

2

Step two

Connect a new Snap Therapy Cartridge to the tube fitting using both hands.

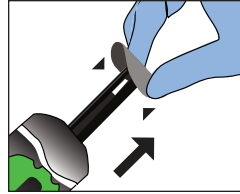


Replacing the 3M™ Snap™ Therapy Cartridge if full due to exudate (cont.)

3

Step three

Follow previous Application Steps instructions, Step 12. Discard the used Snap Therapy Cartridge according to institutional protocol.



Cleaning

If the Snap Therapy Cartridge becomes soiled, follow these general guidelines:

- Clean with a damp, soft cloth
- Dry using a dry cloth
- Avoid using corrosive or abrasive chemicals
- Do not immerse the Snap Therapy Cartridge in water or other fluids

Troubleshooting

Problem

Airtight seal is not present at the dressing, and red pressure discharge indicator is visible.

or

Green capacity indicator does not remain stationary in the chamber window.

Possible causes

Tubing connections may not be secure.

and/or

Leak may be present at the hydrocolloid-to-skin interface.

Possible solutions

- Check that tubing connections are secure.
- Smooth dressing with fingers to flatten wrinkles.
- Seal dressing edges with additional adhesive drapes.

Problem

Airtight seal is not present at the dressing (dressing is not drawn down in appearance) and green capacity indicator is stationary.

Possible causes

Tubing may be occluded.

Possible solutions

- Examine tubing for possible occlusion or kinks. If found, straighten tubing or replace 3M™ Snap™ Advanced Dressing.
- Occlusion may reside in dressing; replace wound dressing.

Physician instructions

The 3M™ Snap™ Therapy Cartridge is available in three models, each capable of creating a preset negative pressure level (-75mmHg, -100mmHg, and -125mmHg). Prior to placement of the 3M™ Snap™ Therapy System, the clinician must assess how to optimally use the Snap Therapy System for an individual wound. It is important to carefully evaluate the wound and patient, to ensure that the Indications for Use are met.

General guidelines:

- The negative pressure level should never be painful to the patient. If a patient reports discomfort with a certain pressure level, a lower negative pressure Snap Therapy Cartridge should be used until the patient reports comfort with the device.
- If the patient reports discomfort with the -75mmHg model then Snap Therapy System should be discontinued.

The physician instructions to the clinician/caregiver should contain:

- ✓ Negative pressure level to be used
- ✓ Dressing change frequency
- ✓ Adjunctive dressings to be used (if needed)
- ✓ Desired treatment duration and/or end-point
- ✓ Patient training and guidance

Physician instructions (cont.)

Ensure the patient and/or caregiver understands the following before release:

- Review the label instructions with the patient and/or caregiver and ensure that the patient and/or caregiver understands them adequately.
- Frequency of 3M™ Snap™ Therapy Cartridge inspection (at a minimum every 8 hours).
- How to identify a leak in the 3M™ Snap™ Advanced Dressing and what actions to take to address it.

Refer to section: Troubleshooting

- Replace the 3M™ Snap™ Therapy Cartridge when the red indicator is visible and cartridge is full. Check seal on dressing.
- How to replace the Snap Therapy Cartridge.
Refer to section: Replacing the Snap Therapy Cartridge
- When it is necessary to remove the 3M™ Snap™ Advanced Dressing completely and replace with an alternate dressing. **Refer to section: Application and Activation Instructions**
- Material is present in the Snap Therapy Cartridge to gel the exudate.

3M™ Snap™ Advanced Dressing application tips & tricks

In this section you will find specialized application and cutting techniques to help apply 3M™ Snap™ Therapy System to special anatomies. These techniques may help eliminate wrinkles and/or bunching of the hydrocolloid to create an airtight seal.

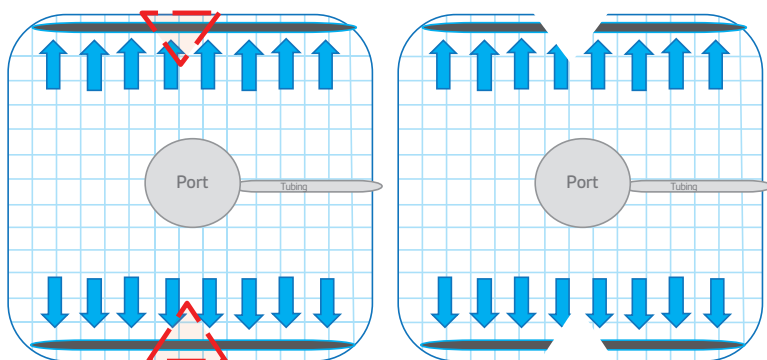
Things to remember regarding Snap Advanced Dressing application:

- Sealing with proprietary hydrocolloid is different than when using 3M™ V.A.C.® Drape.
- Remove proprietary hydrocolloid backing and apply slowly to minimize wrinkles.
- If a leak occurs, pinch the wrinkle, or fill with stoma paste. Cover paste with extra hydrocolloid or film dressing.
- After application is complete, strips of transparent film may be applied to the outer borders to reduce chance of edges rolling.
- Certain wound areas may benefit from a stabilizer like 3M™ Coban™ Self-Adherent Wrap to secure Snap Advanced Dressing.

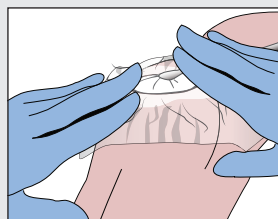
Tips and tricks (cont.)

3M™ Snap™ Advanced Dressing application on a Heel:

- Hold Snap Advanced Dressing to heel area to evaluate areas needing to be trimmed in order to avoid wrinkles.
- Mark areas of Snap Advanced Dressing to be removed.
- Cut out wedges (save wedges).
- Position over foam with tubing going up towards knee.
- Peel backing off carefully and walk proprietary hydrocolloid into place.



Heel application

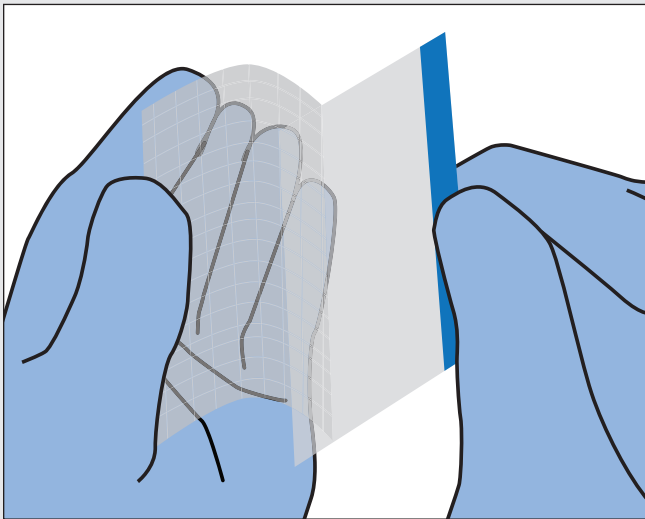


Tips and tricks (cont.)

3M™ Snap™ Advanced Dressing application on a Heel: (cont.)

Applying Snap Advanced Dressing:

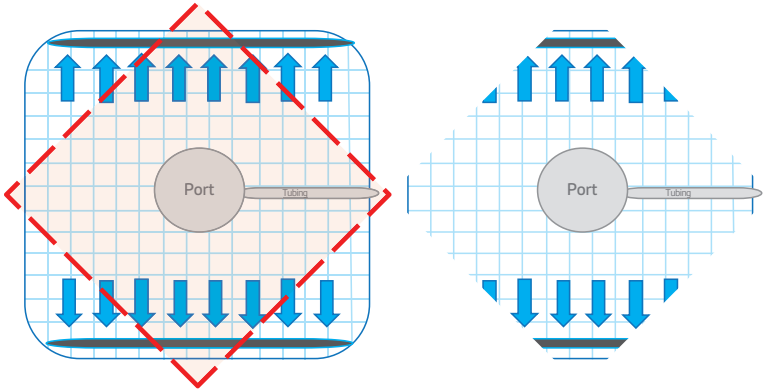
- Remove backing carefully and slowly during placement to reduce wrinkle formation.
- Smooth out wrinkles that may occur as proprietary hydrocolloid is slowly “walked” onto skin.
- If wrinkle occurs, pinch hydrocolloid together.
- Use 3M™ Snap™ SecurRing™ Hydrocolloid Skin Barrier to “plug” leaks with additional proprietary hydrocolloid cover.



Tips and tricks (cont.)

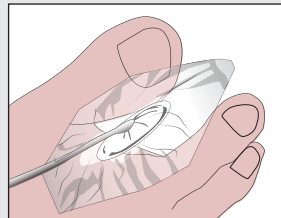
3M™ Snap™ Advanced Dressing application on a toe amputation/wedge resection:

- Option 1 (Diamond shape)



Toe amputation/wedge resection application

Option 1



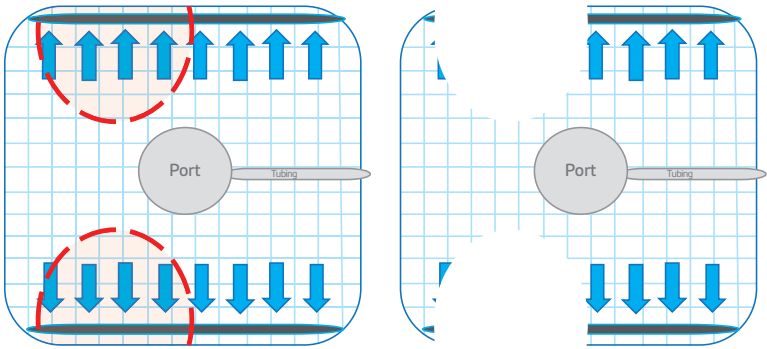
Tips:

- Never make a single cut or slit.
- Do not allow hydrocolloid to overlap.
- Minimum cut is a triangle or compound cut.
- Leave enough of proprietary hydrocolloid to cover foam.
- Leave 1.5cm border around port.

Tips and tricks (cont.)

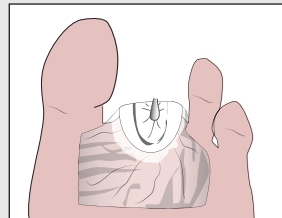
3M™ Snap™ Advanced Dressing application on a toe amputation/wedge resection:

- Option 2 (Hourglass shape)



Toe amputation/wedge resection application

Option 2



Tips:

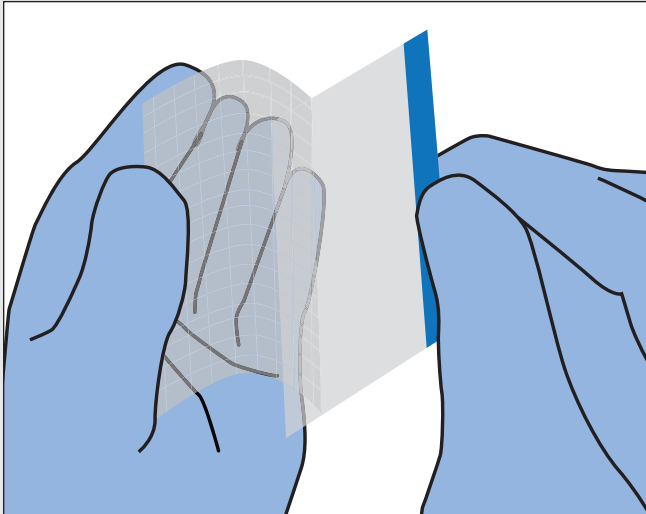
- Trim proprietary hydrocolloid into hourglass figure or similar shape to accommodate anatomy.
- Position over foam with tubing going up towards knee.
- Peel backing off carefully and walk proprietary hydrocolloid into place.

Tips and tricks (cont.)

3M™ Snap™ Advanced Dressing application on a toe amputation/wedge resection (cont.):

Applying Snap Advanced Dressing:

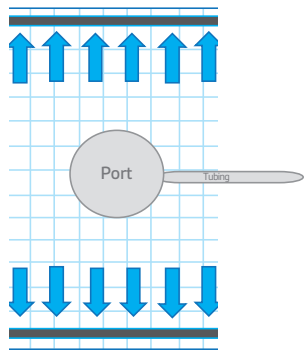
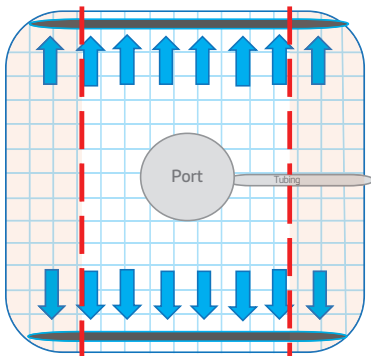
- Remove backing carefully and slowly during placement to reduce wrinkle formation.
- Smooth out wrinkles that may occur as proprietary hydrocolloid is slowly “walked” onto skin.
- If wrinkle occurs, pinch hydrocolloid together.
- Use 3M™ Snap™ SecurRing™ Hydrocolloid Skin Barrier to “plug” leaks with additional proprietary hydrocolloid cover.



Tips and tricks (cont.)

3M™ Snap™ Advanced Dressing cutting for transmetatarsal amputation (TMA):

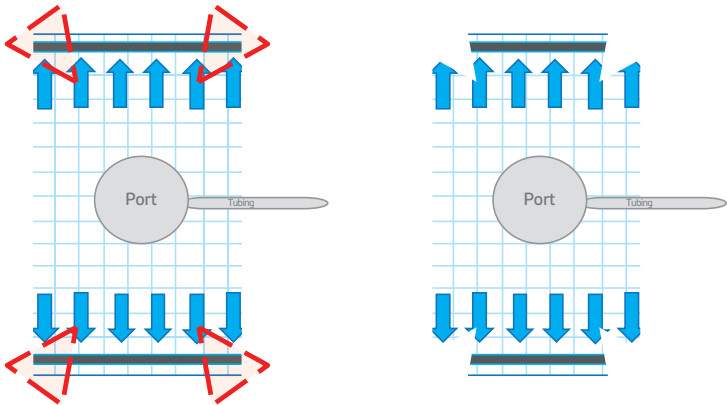
- Measure the wound and mark proprietary hydrocolloid to ensure 3cm beyond the edges of the port.
- Cut 1 strip off of each end of the proprietary hydrocolloid to leave the correct length (save removed strips).



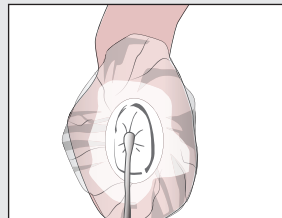
Tips and tricks (cont.)

3M™ Snap™ Advanced Dressing application on a TMA:

- Cut out a wedge in each corner of the remaining proprietary hydrocolloid.
- Place the port in the center of the wound with the tubing extending towards head.
- Slowly peel off backing and begin hydrocolloid application by sealing top and bottom of foot first.



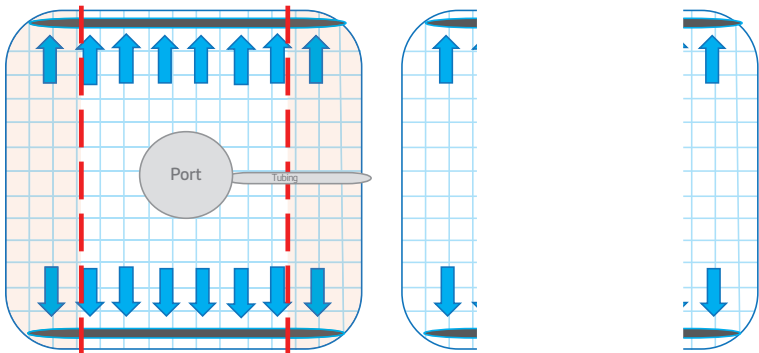
TMA Application



Tips and tricks (cont.)

3M™ Snap™ Advanced Dressing "Picture Frame" application on a TMA:

- Insert 3M™ Snap™ Therapy System blue foam.
- Apply the 2 saved strips of proprietary hydrocolloid to "picture frame" plantar and dorsal aspects of wound.



Tips:

- May use stoma paste or 3M™ Snap™ SecurRing™ Hydrocolloid Skin Barrier at medial and lateral aspects of wound to assist in obtaining seal.
- Snap™ SecurRing™ Hydrocolloid Skin Barrier or stoma paste can be used at medial and lateral aspects of the wound to assist in obtaining a seal.

Therapy Introduction checklist for the 3M™ Snap™ Therapy System

Clinical objectives

- Introduction to Snap Therapy
- Understand the safe use of the Snap Therapy System

A. Communicate therapy basic requirements	
●	1. Describe goals of therapy for the Snap Therapy System.
●	2. Identify wound types appropriate for the Snap Therapy System.
●	3. Describe contraindications for use of the Snap Therapy System.
B. Review basic steps & system components	
●	4. Confirm physician/clinician orders for therapy use prior to placement.
●	5. Components of the Snap Therapy System <ul style="list-style-type: none">● Prescribed 3M™ Snap™ Therapy Cartridge● 3M™ Snap™ Dressing Kit● 3M™ Snap™ SecurRing™ Hydrocolloid Skin Barrier● 3M™ Snap™ Therapy Strap

Therapy introduction checklist (cont.)

B. Review basic steps & system components



6. Application considerations

- Cleanse wound and periwound tissue per physician order.
- Skin prep for fragile/friable tissue over the periwound area.
- Cut foam to fit the wound, but **do not** over pack.
- Roll and apply 3M™ Snap™ SecurRing™ Hydrocolloid Skin Barrier to external edges of the wound.
- Maintain 1 cm between Snap SecurRing Hydrocolloid Skin Barrier and wound edge.
- Apply Snap™ SecurRing™ Hydrocolloid Skin Barrier dressing to the tubing pointed in the direction where the therapy cartridge will be worn.
- Minimize or eliminate wrinkles or kinks.
- Measure and cut dressing tubing to the desired length considering placement of the cartridge.
- Minimize potential kinks/bends in the tubing.
- Insert tube fitting into the tube and attach 3M™ Snap™ Therapy Cartridge. (Note: **do not** remove tube fitting cap).
- Activate 3M™ Snap™ Therapy Cartridge.
- Secure Snap Therapy Cartridge using 3M™ Snap™ Therapy Strap.



7. Repriming the Snap Therapy Cartridge

- If air is noticed in the Snap Therapy Cartridge or the 3M™ Snap™ Plus -125mmHg Therapy Cartridge, leave the tube fitting attached and depress the Activation Key until air has been evacuated.
- Ensure the capacity indicator is 5ml from any exudate or gelled material in the Snap Therapy Cartridge.

Clinical skills checklist for the 3M™ Snap™ Therapy System

Clinical objectives:

1. Understand the safe and effective use of the 3M™ Snap™ Therapy System.
2. Demonstrate clinical knowledge and skills for application and management of the Snap Therapy System.
3. Verbalize patient and/or caregiver teaching and instructions for use and care of the Snap Therapy System.

Therapy basics	Verbalizes understanding	Needs instructional assistance	Comments
1. Describes wound types appropriate for this system.			
2. Describes contraindications for use of the system.			
3. Identifies potential patient risk factors.			
Application	Demonstrates skill & understanding	Needs instructional assistance	Comments
1. Reads, reviews and signs physician orders for therapy use prior to placement.			

Clinical skills checklist (cont.)

Application	Demonstrates skill & understanding	Needs instructional assistance	Comments
<p>2. Nurse should assess patient's pain prior to dressing application and or change. Ensure and document that patient agrees/ consents to application of Snap™ Therapy System. Gathers appropriate supplies prior to dressing change including:</p> <ul style="list-style-type: none"> ● Prescribed 3M™ Snap™ Therapy Cartridge ● 3M™ Snap™ Dressing Kit ● 3M™ Snap™ SecurRing™ Hydrocolloid Skin Barrier ● 3M™ Snap™ Therapy Strap ● Non-adherent primary dressing, as needed ● Irrigation solution/ wound cleanser 			
<p>3. Initiates appropriate Universal Precautions and protective equipment including:</p> <ul style="list-style-type: none"> ● Appropriate disposal devices (biohazard, etc) ● Gloves ● Gown/shield, as needed 			

Clinical skills checklist (cont.)

Application	Demonstrates skill & understanding	Needs instructional assistance	Comments
4. Removes and disposes of old dressings per facility protocol.			
5. Cleanses wounded tissue and peri-wound tissues per physician order considering: <ul style="list-style-type: none"> ● Non-moisturizing soap for periwound tissue. ● Removal of dried, devitalized peri-wound tissues. ● Use of skin prep for excessively moist peri-wound tissue. 			
6. Incorporates non-adherent layer, as needed.			
7. Measures and cuts reticulated open cell foam (blue) interface to fit the wound. <ul style="list-style-type: none"> ● Does not cut foam over wound. ● Removes all loose foam particles. ● Gently places foam into wound – does not pack. ● Ensures foam is in contact with all wounded tissues. ● Counts and documents pieces of foam or gauze dressing placed into wound. 			

Clinical skills checklist (cont.)

Application	Demonstrates skill & understanding	Needs instructional assistance	Comments
<p>8. Applies Snap™ SecurRing™ Hydrocolloid to external wound edges after rolling, stretching to the appropriate length to fit the wound, ensuring a 1 cm gap of intact skin from the wound edge.</p>			
<p>9. Applies 3M™ Snap™ Dressing considering:</p> <ul style="list-style-type: none"> ● Application begins in the most difficult to seal region of the wound. ● Suction port is directly over foam—not over intact tissues. ● Snap Dressing may be pulled and can be stretched when secured to peri-wound]. ● Minimizes or eliminates wrinkles or kinks by using fingertips to symmetrically secure the Snap Dressing as the release liner is removed. ● Place hands or stabilizer over Snap Dressing in difficult to secure areas such as the foot to provide additional warmth to the hydrocolloid to enhance the seal. 			

Clinical skills checklist (cont.)

Application	Demonstrates skill & understanding	Needs instructional assistance	Comments
<p>10. Measures and cuts dressing tubing to the desired length considering:</p> <ul style="list-style-type: none"> ● Minimizing potential kinks/bends in the tubing ● Minimizing potential tripping hazards 			
<p>11. Inserts tube fitting into the tube & attaches 3M™ Snap™ Therapy Cartridge. Ensuring that tubing is trimmed to appropriate length to prevent tripping.</p>			
<p>12. Activates Snap Therapy Cartridge by:</p> <ul style="list-style-type: none"> ● Pressing down on activation / reset key and pulling it out. ● Re-inserting and repeating as needed until an airtight seal is obtained and the red pressure discharge indicator is not visible in the pressure discharge window. 			
<p>13. Secures Snap Therapy Cartridge to the patient's extremity or belt using 3M™ Snap™ Therapy Strap ensuring:</p> <ul style="list-style-type: none"> ● Stabilization of device ● Assessment of patient's pain/comfort ● Optimal distal/inferior perfusion as evidenced by: <ul style="list-style-type: none"> - Tissue color - Distal pulses - Capillary refill 			

Clinical skills checklist (cont.)

Application	Demonstrates skill & understanding	Needs instructional assistance	Comments
<p>14. Nurse assesses cartridge and dressing status post Snap Therapy System application by:</p> <ul style="list-style-type: none"> ● Recognizing Green capacity indicator is: <ul style="list-style-type: none"> - Visible - Stationary in window ● Confirming dressing has a “drawn down” or collapsed appearance. ● Confirming dressing feels firm to touch. 			
<p>15. Demonstrates Snap Therapy System replacement knowledge by identifying the need to replace for following reasons:</p> <ul style="list-style-type: none"> ● Red pressure discharge indicator is visible. ● Evidence of lack of pressure. ● Snap Therapy Cartridge is full. ● Snap Therapy Dressing change interval is met. 			

Clinical skills checklist (cont.)

Application	Demonstrates skill & understanding	Needs instructional assistance	Comments
<p>16. Provides comprehensive patient/caregiver instructions including:</p> <ul style="list-style-type: none"> ● Frequency of Snap Therapy Cartridge and Dressing inspection (every 8 hours). ● When to replace the Snap Therapy Cartridge. ● How to replace the Snap Therapy Cartridge. ● How to identify a leak in the Snap Therapy Dressing and appropriate interventions. ● Contact information for questions or assistance. 			

Troubleshooting	Demonstrates skill & understanding	Needs instructional assistance	Comments
<p>1. Verbalizes interventions for red pressure discharge indicator becoming visible including:</p> <ul style="list-style-type: none"> ● Re-setting Snap Therapy Cartridges. ● Checking tubing connections. ● Assessing Snap Therapy Dressing collapse/seal. ● Applying additional pressure/warmth to areas of potential leaks. 			




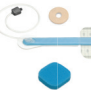





Clinical skills checklist (cont.)

Troubleshooting	Demonstrates skill & understanding	Needs instructional assistance	Comments
<p>2. Verbalizes interventions for patient cause of pain at dressing changes:</p> <ul style="list-style-type: none">• Evaluate state of wound.• Incorporate use of non-adherent as primary layer if up growth of tissue or adhesion is seen upon removal.			

Ordering information

	Description	SKU	Size	Quantity
	3M™ Snap™ -125mmHg Therapy Cartridge	SNPA125US	60mL	Eaches
	3M™ Snap™ -125mmHg Therapy Cartridge	SNPA125US/10	60mL	Case of 10
	3M™ Snap™ -100mmHg Therapy Cartridge	SNPA100US	60mL	Eaches
	3M™ Snap™ -100mmHg Therapy Cartridge	SNPA100U/10S	60mL	Case of 10
	3M™ Snap™ -75mmHg Therapy Cartridge	SNPA075US	60mL	Eaches
	3M™ Snap™ -75mmHg Therapy Cartridge	SNPA075US/10	60mL	Case of 10
	3M™ Snap™ Plus -125mmHg Therapy Cartridge	SNPA125PLUS	150mL	Eaches
	3M™ Snap™ Plus -125mmHg Therapy Cartridge	SNPA125PLUS/10	150mL	Case of 10
	3M™ Snap™ Therapy Strap, Small	STPAS	18"	Eaches
	3M™ Snap™ Therapy Strap, Medium	STPAM	21"	Eaches
	3M™ Snap™ Therapy Strap, Large	STPAL	24"	Eaches
	3M™ Snap™ Plus Therapy Strap, Small	STPASP	18"	Eaches
	3M™ Snap™ Plus Therapy Strap, Medium	STPAMP	21"	Eaches
	3M™ Snap™ Plus Therapy Strap, Large	STPALP	24"	Eaches

Ordering information (cont.)

	Description	SKU	Size	Quantity
	3M™ Snap™ Advanced Dressing Kit, Foam	SKTF10X10	10cm x 10cm	Eaches
	3M™ Snap™ Advanced Dressing Kit, Foam	SKTF10X10/10	10cm x 10cm	Case of 10
	3M™ Snap™ Advanced Dressing Kit, Foam	SKTF15X15	15cm x 15cm	Eaches
	3M™ Snap™ Advanced Dressing Kit, Foam	SKTF15X15/10	15cm x 15cm	Case of 10
	3M™ Snap™ Bridge Dressing Kit, Foam	BKTF14X11	14cm x 11cm	Eaches
	3M™ Snap™ Bridge Dressing Kit, Foam	BKTF14X11/10	14cm x 11cm	Case of 10
	3M™ Snap™ Bridge Dressing Kit with SecurRing™ Hydrocolloid Skin Barrier	BKTF14X11S	14cm x 11cm	Eaches
	3M™ Snap™ Bridge Dressing Kit with SecurRing™ Hydrocolloid Skin Barrier	BKTF14X11S/10	14cm x 11cm	Case of 10
	3M™ Snap™ SecurRing™ Hydrocolloid Skin Barrier	SRNG10	2" diameter	Case of 10

References:

1. Armstrong DG, Marston WA, Reyzelman AM, Kirsner RS. Comparative effectiveness of mechanically and electrically powered negative pressure wound therapy devices: a multicenter randomized controlled trial. *Wound Repair and Regen.* 2012;20(3):332–341.

2. Marston WA, Armstrong DG, Reyzelman AM, Kirsner RS. A Multicenter Randomized Controlled Trial Comparing Treatment of Venous Leg Ulcers Using Mechanically Versus Electrically Powered Negative Pressure Wound Therapy. *Adv Wound Care.* 2015;4(2):75–82. doi:10.1089/wound.2014.0575.

For additional information,
please contact your local representative.

Note: Specific indications, contraindications, warnings, precautions and safety information exist for these products and therapies. Please consult a clinician and product instructions for use prior to application. Rx only.



3M Company
2510 Conway Ave
St. Paul, MN 55144 USA

Phone 1-800-275-4524 (NPWT products)
1-800-228-3957
Web 3M.com/medical

© 2021 3M. All rights reserved.
3M and the other marks shown are
marks and/or registered marks.
Unauthorized use prohibited.
70-2011-8227-9
PRA-PM-US-00287 (07/21)