

# 3M™ Oral Care Portal Release Notes

Release: September 2020

## Summary for the September 2020 Release

---

- Complete Rx Before Adding Records
- Digital Bonding Finishing Archwire

## Contents

---

Rx Defaults (3M™ Digital Bonding)

- Finishing Archwire Size

Treatment Designer (3M™ Digital Bonding)

- Finishing Archwire Size & Torque Expression Simulation

Orders: Updates to the Prescription Page

- Complete Rx Before Adding Records
- Finishing Archwire Size (Digital Bonding)

Tx Design Summary (3M™ Digital Bonding)

- Finishing Archwire Size (Digital Bonding)

Case List

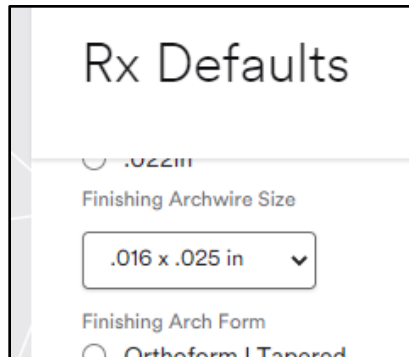
- Progress Scan Priority

## Rx Defaults (3M™ Digital Bonding)

The following enhancement has been made to **Rx Defaults** in the September 2020 release of the Oral Care Portal.

### Finishing Archwire Size

A prescription default is available for Finishing Archwire Size. Specify your default under **My Profile > Rx Defaults**.



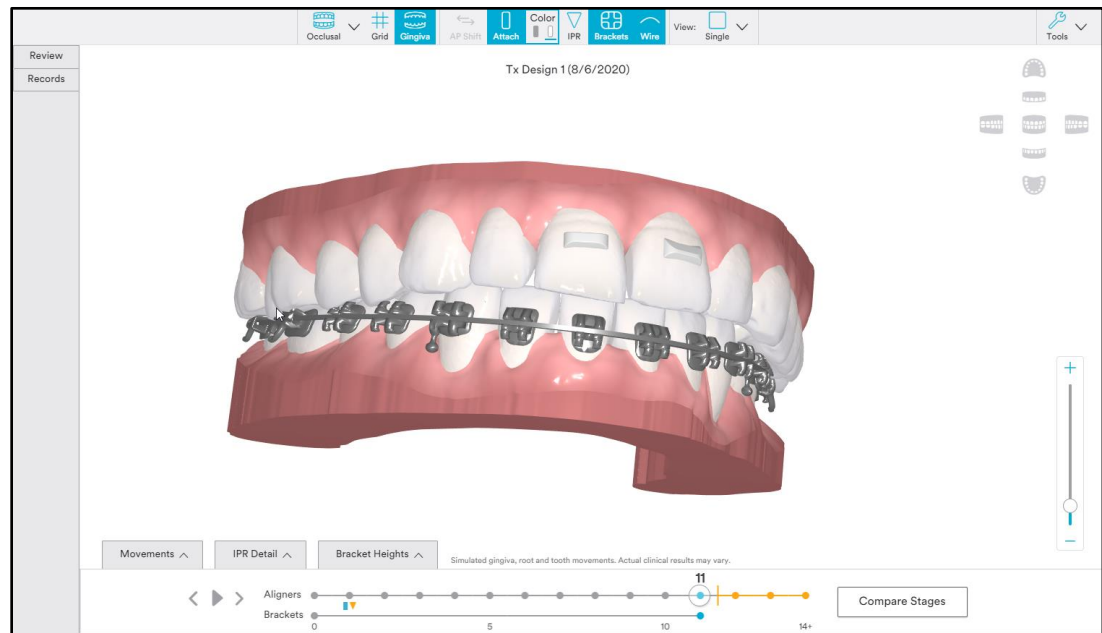
The screenshot shows a web form titled "Rx Defaults". Below the title, there is a section for "Finishing Archwire Size" with a dropdown menu currently displaying ".016 x .025 in". Below this, there is a section for "Finishing Arch Form" with a radio button selected for "Orthoform I Tapered".

## Treatment Designer (3M™ Digital Bonding)

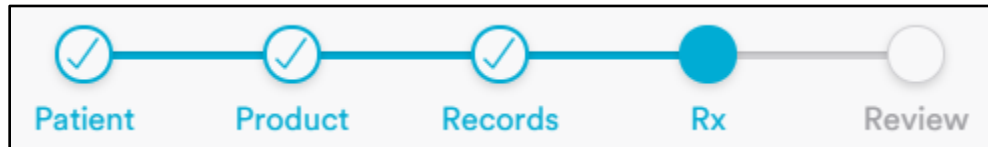
The following enhancement has been made to the **Tx Designer** in the September 2020 release of the Oral Care Portal.

### Finishing Archwire Size & Torque Expression Simulation

For Digital Bonding orders, the finishing archwire and torque expression will be simulated on the final stage of the Tx Design.



## Orders: Updates to the Prescription Page



The following enhancements have been made to the **Rx** page in the September 2020 release of the Oral Care Portal.

### Complete Rx Before Adding Records

The prescription details can now be completed before adding records. From the **Records** page, simply continue to the **Rx** page. Records will need to be completed before submitting the order.

### Finishing Archwire Size (Digital Bonding)

The Finishing Archwire Size has been added and must be chosen when completing the prescription. This information will more accurately simulate torque expression on the Tx Design.

Finishing Archwire Size can be set as an Rx Default preference in your profile.

## Tx Design Summary (3M™ Digital Bonding)

The following enhancement has been made to the **Tx Design Summary** in the September 2020 release of the Oral Care Portal.

### Finishing Archwire Size (Digital Bonding)

For Digital Bonding orders, the **Finishing Archwire Size** will display on the Tx Design Summary.

<b>Buccal Tubes:</b> Victory Series™ Superior Fit (MBT™) Single Conver
<b>Upper Finishing Archwire:</b> Orthoform II Square   .018 x .025 in.
<b>Lower Finishing Archwire:</b> Orthoform II Square   .016 x .016 in.

## Case List

The following enhancement has been made to **Case List** in the September 2020 release of the Oral Care Portal.

### Progress Scan Priority

On the **Case List**, the Action Required status will be automatically removed after a **Progress Scan** has been viewed.

Case List

New Order

Patient Name

Search by Patient Name

Priority	Case ID	Patient Name	Item	Date	Status	Actions
	MTS89J	AP	Progress Scan	8/24/2020	Progress Scan Complete	