

Inspection of a Filtering Facepiece Respirator for Reuse

Inspection



1. Perform hand hygiene per facility protocol.



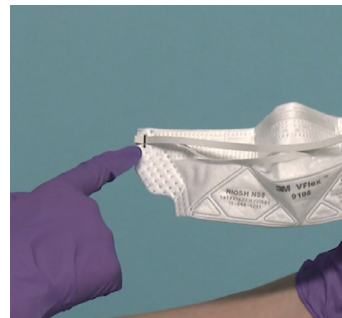
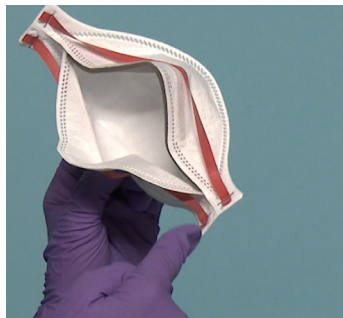
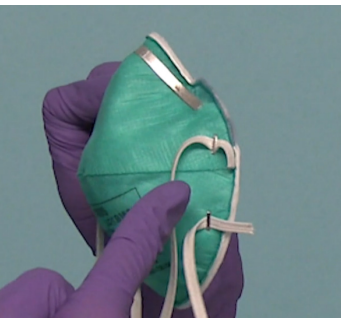
2. Apply clean gloves.



3. Take care not to touch the inside of the respirator. Begin inspection according to the specific instructions for your model.



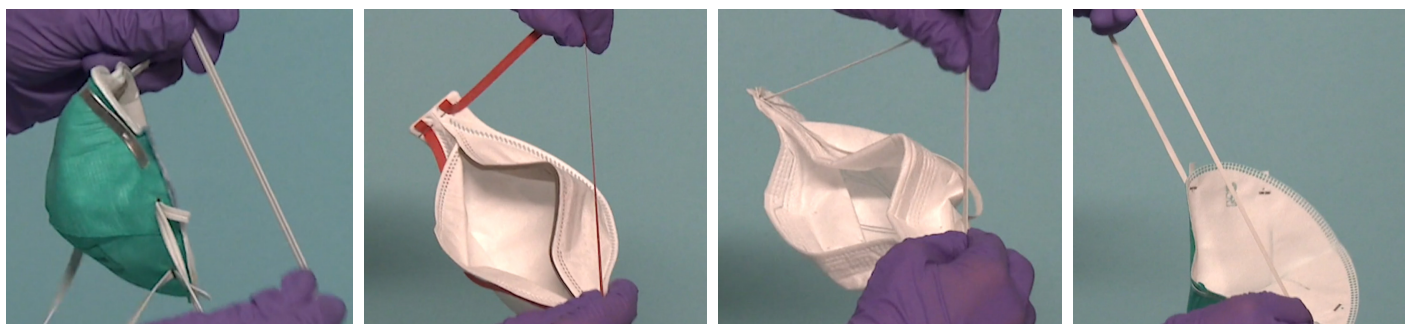
4. Inspect body for holes, tears, or other damage or soiling.



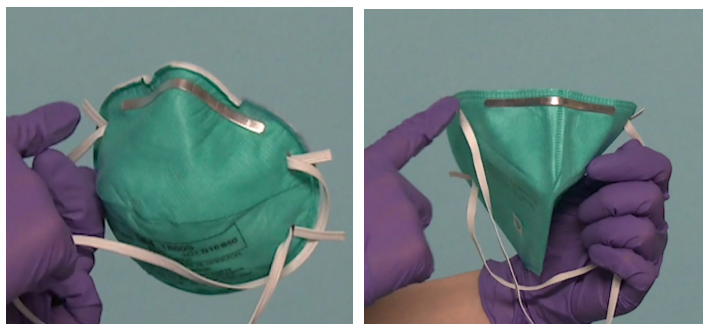
5. Inspect attachment points.

NOTE: You can view the video *Inspection and Redonning (putting on) of a Filtering Facepiece Respirator* [here](#).

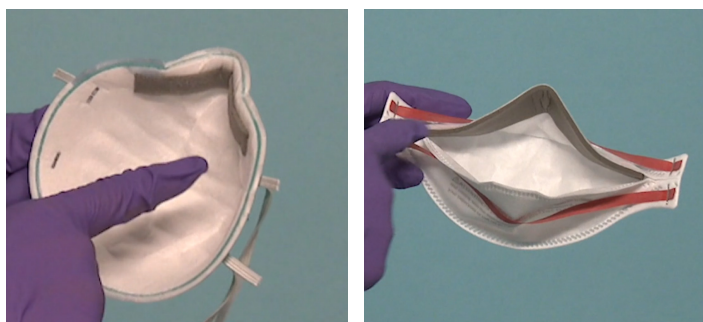
DISCLAIMER: Always read and follow *User Instructions*.



6. Inspect straps for damage and to ensure they maintain original elasticity.



7. Inspect the noseclip to ensure it remains in original condition and is not damaged.

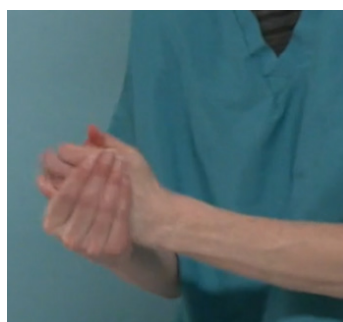


8. Inspect the nosefoam to ensure it remains in original condition and is not compressed, detached or otherwise damaged.

NOTE: Don (put on) respirator according to model-specific instructions.



9. After redonning, remove and discard gloves according to facility protocol.



10. Perform hand hygiene per facility protocol.

NOTE: You can view the video *Inspection and Redonning (putting on) of a Filtering Facepiece Respirator* [here](#).

DISCLAIMER: Always read and follow *User Instructions*.

3M Personal Safety Division Technical Service 1 (800) 243-4630