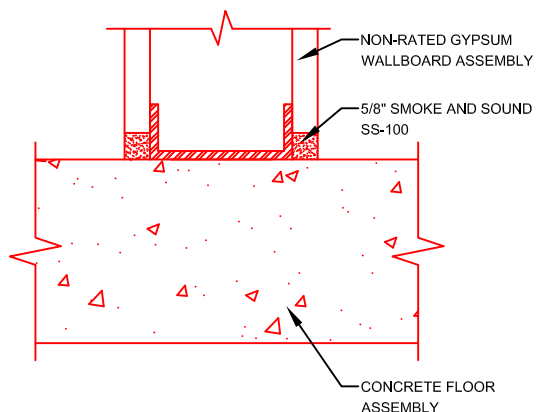
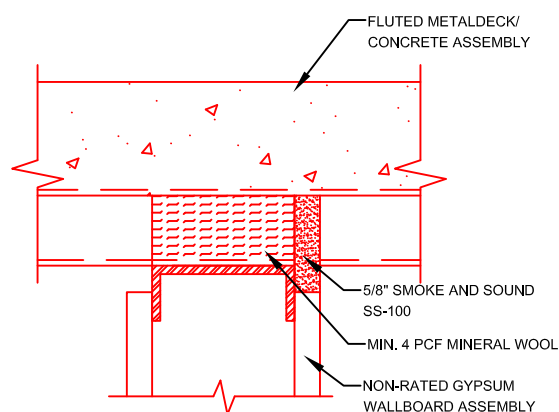
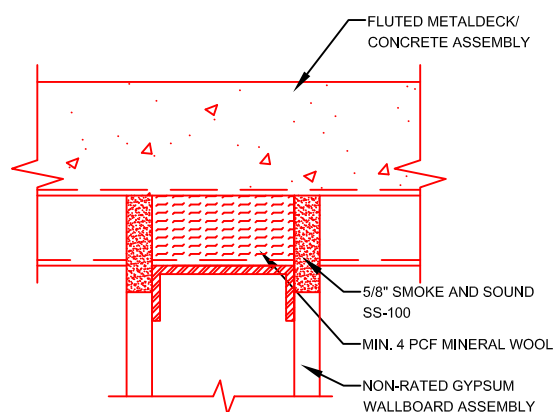
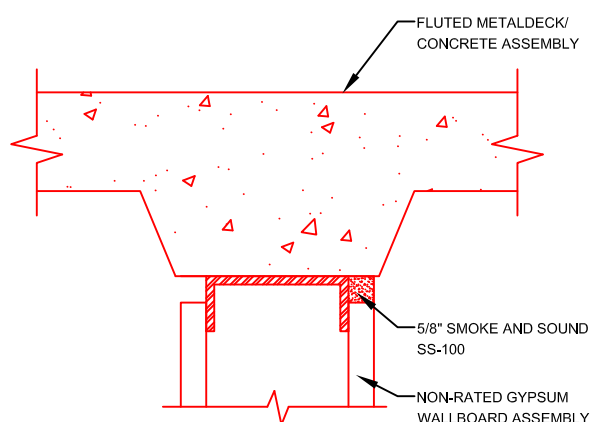
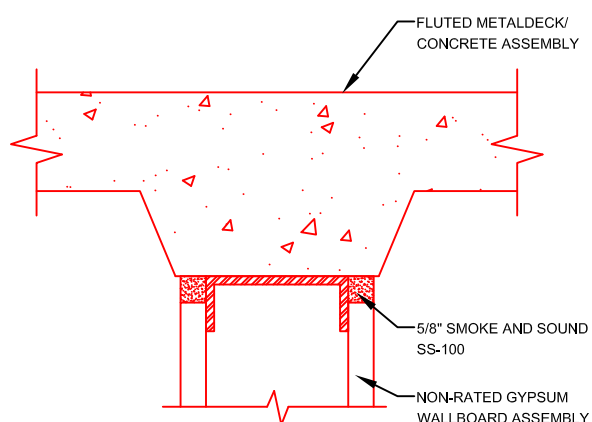
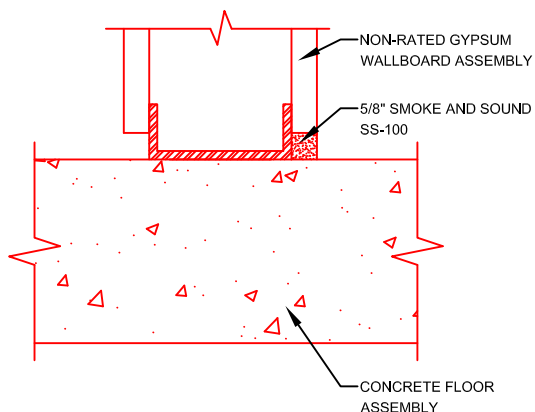


3M^(tm) SMOKE AND SOUND SEALANT SS-100 INSTALLATION GUIDE

2-SIDED APPLICATION



SINGLE-SIDE APPLICATION



NOTES/LIMITATIONS

1. IS NOT A FIRE RATED ASSEMBLY
2. NOT FOR USE WITH CPVC

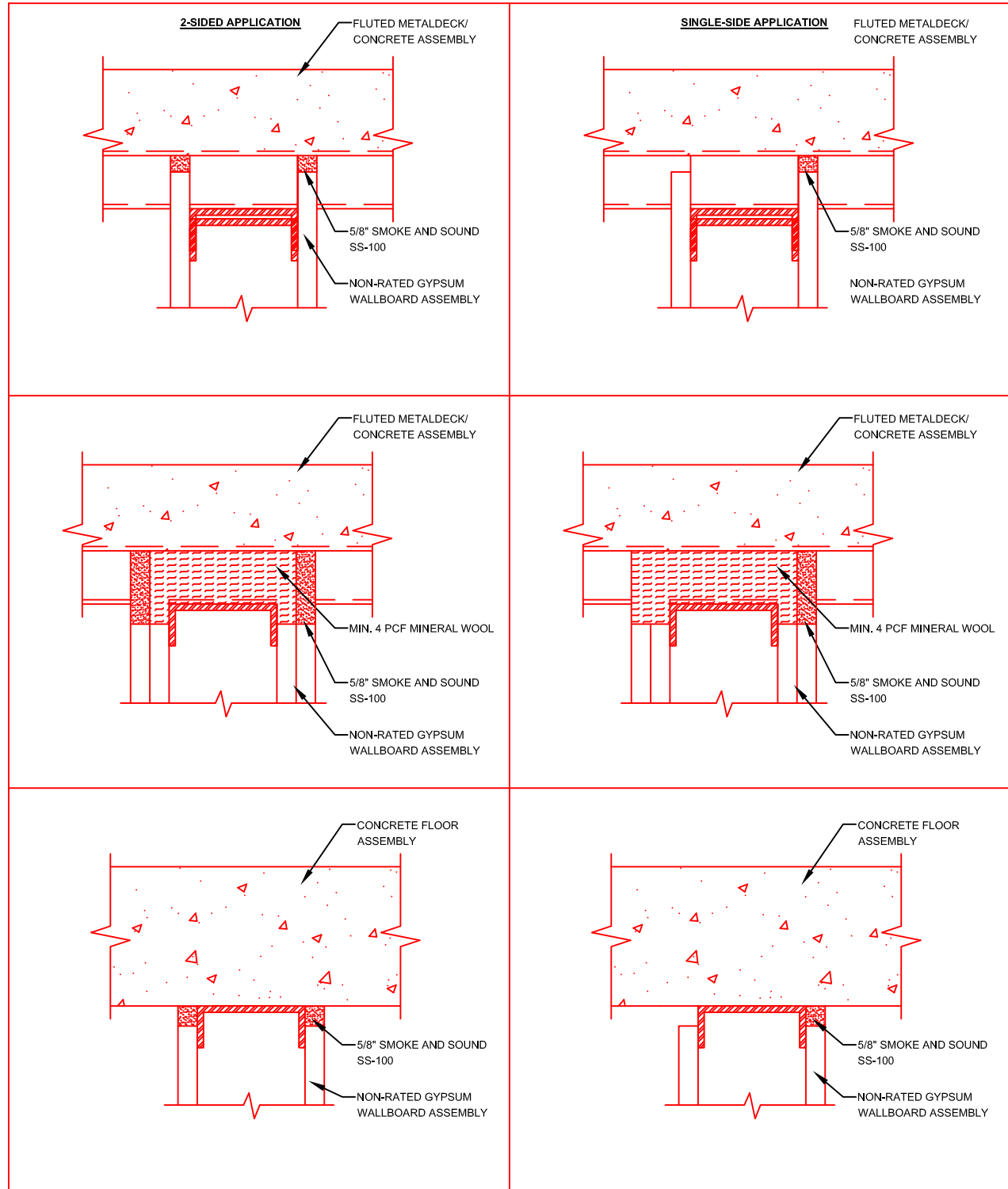
3. DO NOT APPLY 3MTM SMOKE AND SOUND SEALANT SS 100 WHEN SURROUNDING TEMPERATURE IS LESS THAN 40°F (4°C) AND IN CONDITIONS WHEN SEALS MAY BE EXPOSED TO RAIN OR WATER SPRAY WITHIN 18 HOURS OF APPLICATION. DO NOT APPLY 3MTM SMOKE AND SOUND SEALANT SS 100 TO BUILDING MATERIALS THAT BLEED OIL, PLASTICIZERS OR SOLVENT (E.G. IMPREGNATED WOOD, OIL-BASED SEALANTS, OR GREEN OR PARTIALLY-VULCANIZED RUBBER) DO NOT APPLY 3MTM SMOKE AND SOUND SEALANT SS 100 TO WET OR FROST-COATED SURFACES OR AREAS THAT ARE CONTINUOUSLY DAMP OR IMMERSSED IN WATER.

NOTICE: THIS PRODUCT IS NOT FOR USE AS A COMMERCIAL FIRESTOP. THIS PRODUCT IS NOT ACCEPTABLE FOR USE WITH CHLORINATED POLYVINYLCHLORIDE (CPVC) PIPES.

4. DETAILS REPRESENT GENERAL INSTALLATION GUIDELINES TO SATISFY SMOKE PARTITION SEALING REQUIREMENTS OF THE CURRENT ADOPTION OF THE INTERNATIONAL BUILDING CODE OR LOCAL AUTHORITY HAVING JURISDICTION.

3M Fire Protection Products

3M_(tm) SMOKE AND SOUND SEALANT SS-100 INSTALLATION GUIDE



NOTES/LIMITATIONS

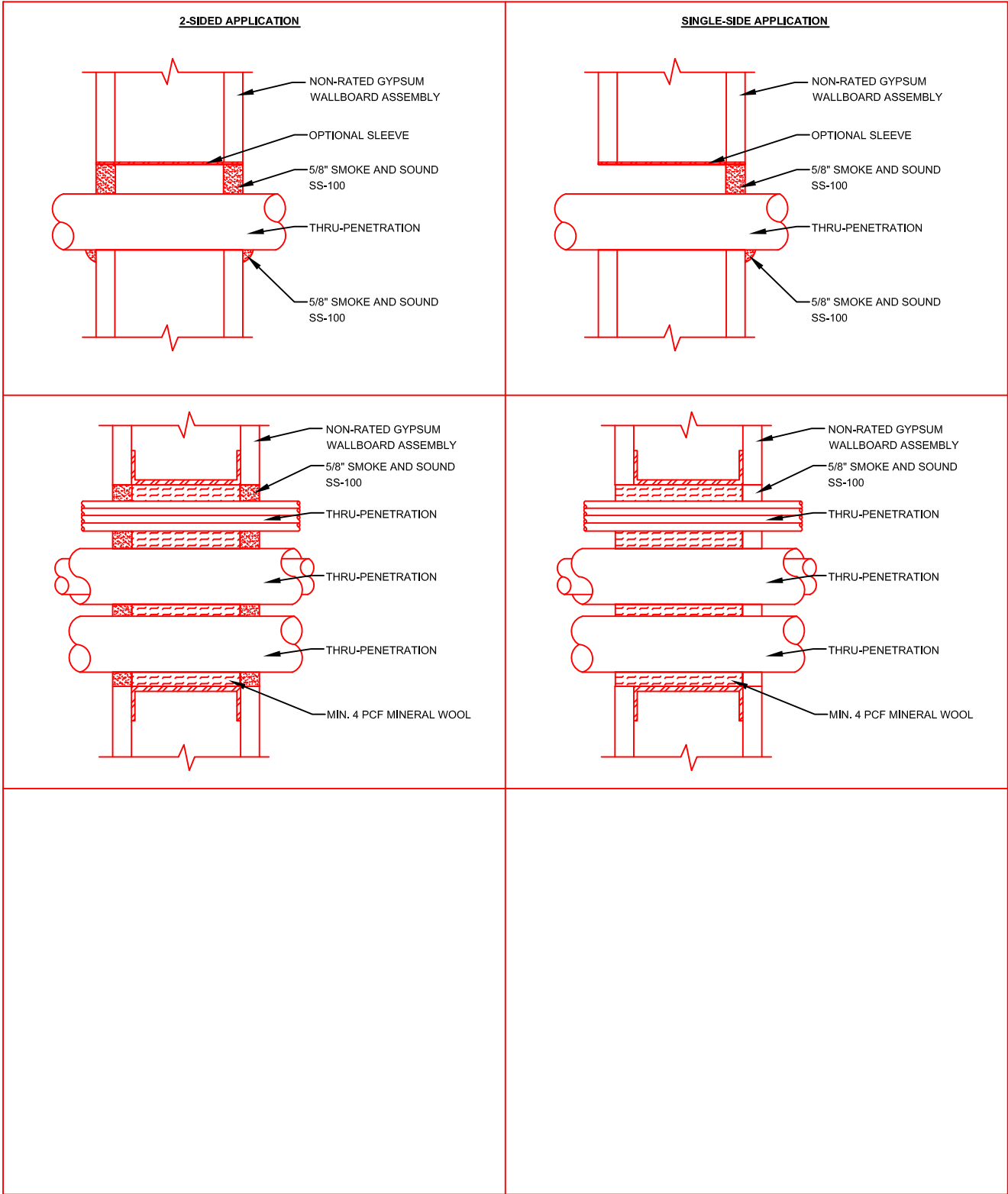
1. IS NOT A FIRE RATED ASSEMBLY
2. NOT FOR USE WITH CPVC

3. DO NOT APPLY 3M[™] SMOKE AND SOUND SEALANT SS 100 WHEN SURROUNDING TEMPERATURE IS LESS THAN 40°F (4°C) AND IN CONDITIONS WHEN SEALS MAY BE EXPOSED TO RAIN OR WATER SPRAY WITHIN 18 HOURS OF APPLICATION. DO NOT APPLY 3M[™] SMOKE AND SOUND SEALANT SS 100 TO BUILDING MATERIALS THAT BLEED OIL, PLASTICIZERS OR SOLVENT (E.G. IMPREGNATED WOOD, OIL-BASED SEALANTS, OR GREEN OR PARTIALLY-VULCANIZED RUBBER) DO NOT APPLY 3M[™] SMOKE AND SOUND SEALANT SS 100 TO WET OR FROST-COATED SURFACES OR AREAS THAT ARE CONTINUOUSLY DAMP OR IMMERSSED IN WATER.

NOTICE: THIS PRODUCT IS NOT FOR USE AS A COMMERCIAL FIRESTOP. THIS PRODUCT IS NOT ACCEPTABLE FOR USE WITH CHLORINATED POLYVINYLCHLORIDE (CPVC) PIPES.

4. DETAILS REPRESENT GENERAL INSTALLATION GUIDELINES TO SATISFY SMOKE PARTITION SEALING REQUIREMENTS OF THE CURRENT ADOPTION OF THE INTERNATIONAL BUILDING CODE OR LOCAL AUTHORITY HAVING JURISDICTION.

3M_(tm) SMOKE AND SOUND SEALANT SS-100 INSTALLATION GUIDE

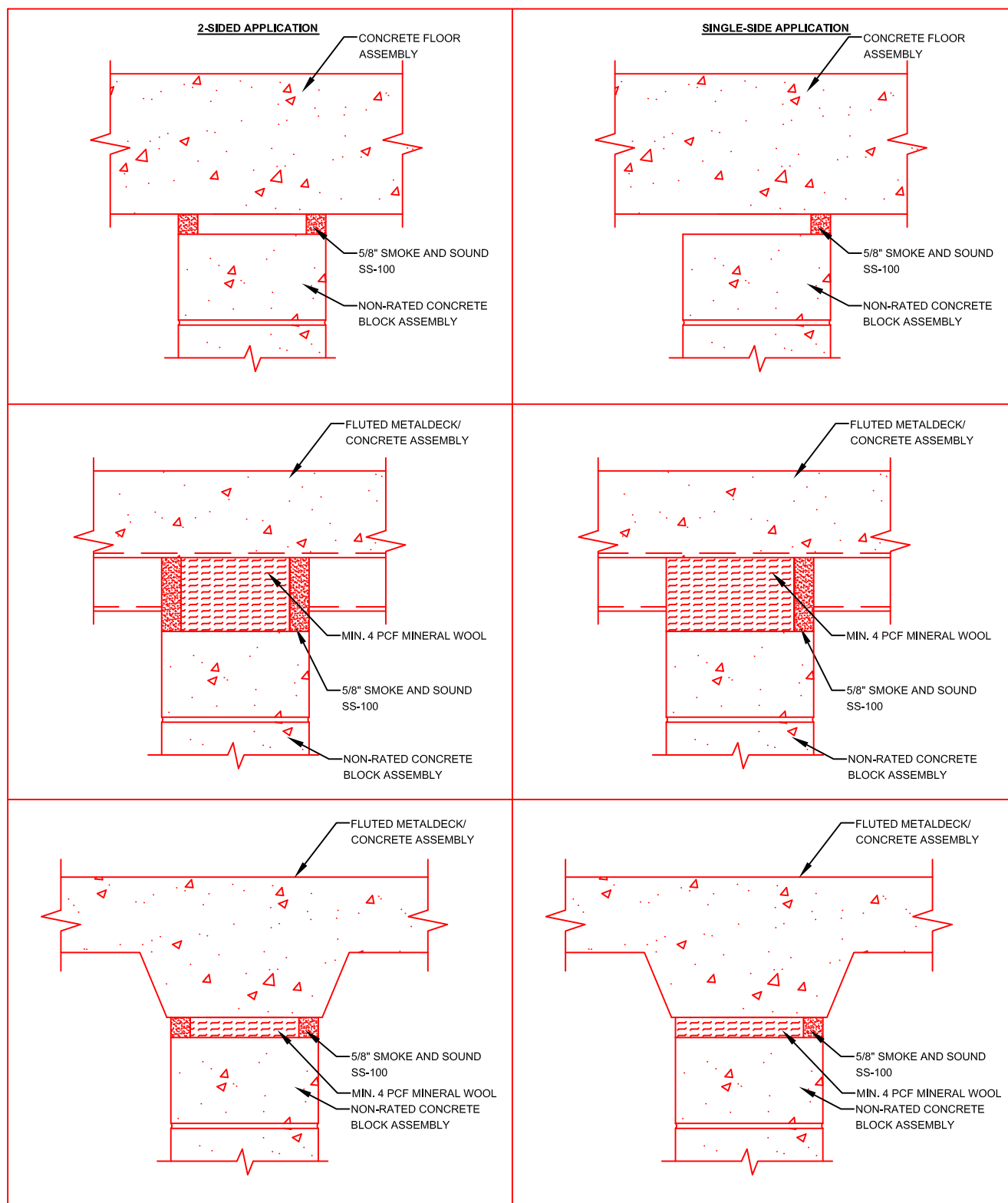


NOTES/LIMITATIONS

1. IS NOT A FIRE RATED ASSEMBLY
2. NOT FOR USE WITH CPVC
3. DO NOT APPLY 3MTM SMOKE AND SOUND SEALANT SS 100 WHEN SURROUNDING TEMPERATURE IS LESS THAN 40°F (4°C) AND IN CONDITIONS WHEN SEALS MAY BE EXPOSED TO RAIN OR WATER SPRAY WITHIN 18 HOURS OF APPLICATION. DO NOT APPLY 3MTM SMOKE AND SOUND SEALANT SS 100 TO BUILDING MATERIALS THAT BLEED OIL, PLASTICIZERS OR SOLVENT (E.G. IMPREGNATED WOOD, OIL-BASED SEALANTS, OR GREEN OR PARTIALLY-VULCANIZED RUBBER) DO NOT APPLY 3MTM SMOKE AND SOUND SEALANT SS 100 TO WET OR FROST-COATED SURFACES OR AREAS THAT ARE CONTINUOUSLY DAMP OR IMMERSSED IN WATER.
4. DETAILS REPRESENT GENERAL INSTALLATION GUIDELINES TO SATISFY SMOKE PARTITION SEALING REQUIREMENTS OF THE CURRENT ADOPTION OF THE INTERNATIONAL BUILDING CODE OR LOCAL AUTHORITY HAVING JURISDICTION.

NOTICE: THIS PRODUCT IS NOT FOR USE AS A COMMERCIAL FIRESTOP. THIS PRODUCT IS NOT ACCEPTABLE FOR USE WITH CHLORINATED POLYVINYLCHLORIDE (CPVC) PIPES.

3M_(tm) SMOKE AND SOUND SEALANT SS-100 INSTALLATION GUIDE



NOTES/LIMITATIONS

1. IS NOT A FIRE RATED ASSEMBLY
2. NOT FOR USE WITH CPVC

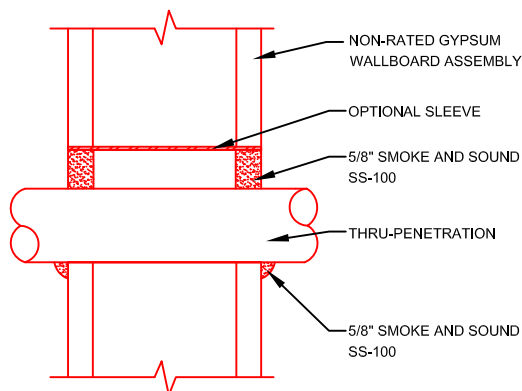
3. DO NOT APPLY 3MTM SMOKE AND SOUND SEALANT SS 100 WHEN SURROUNDING TEMPERATURE IS LESS THAN 40°F (4°C) AND IN CONDITIONS WHEN SEALS MAY BE EXPOSED TO RAIN OR WATER SPRAY WITHIN 18 HOURS OF APPLICATION. DO NOT APPLY 3MTM SMOKE AND SOUND SEALANT SS 100 TO BUILDING MATERIALS THAT BLEED OIL, PLASTICIZERS OR SOLVENT (E.G. IMPREGNATED WOOD, OIL-BASED SEALANTS, OR GREEN OR PARTIALLY-VULCANIZED RUBBER) DO NOT APPLY 3MTM SMOKE AND SOUND SEALANT SS 100 TO WET OR FROST-COATED SURFACES OR AREAS THAT ARE CONTINUOUSLY DAMP OR IMMERSSED IN WATER.

NOTICE: THIS PRODUCT IS NOT FOR USE AS A COMMERCIAL FIRESTOP. THIS PRODUCT IS NOT ACCEPTABLE FOR USE WITH CHLORINATED POLYVINYLCHLORIDE (CPVC) PIPES.

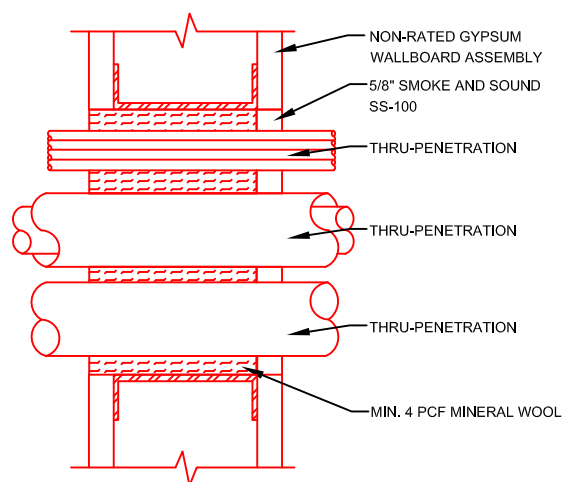
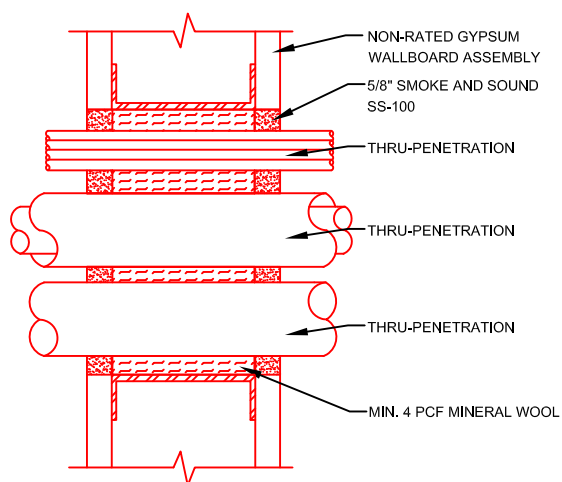
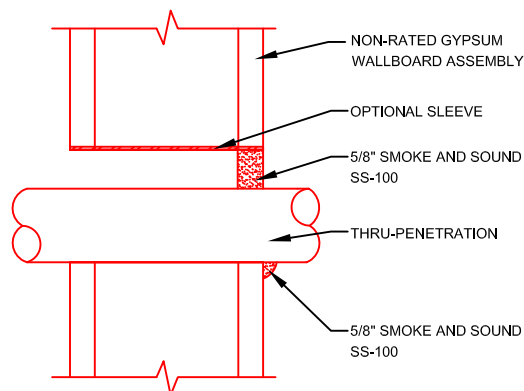
4. DETAILS REPRESENT GENERAL INSTALLATION GUIDELINES TO SATISFY SMOKE PARTITION SEALING REQUIREMENTS OF THE CURRENT ADOPTION OF THE INTERNATIONAL BUILDING CODE OR LOCAL AUTHORITY HAVING JURISDICTION.

3M^(tm) SMOKE AND SOUND SEALANT SS-100 INSTALLATION GUIDE

2-SIDED APPLICATION



SINGLE-SIDE APPLICATION



NOTES/LIMITATIONS

1. IS NOT A FIRE RATED ASSEMBLY
2. NOT FOR USE WITH CPVC

3. DO NOT APPLY 3MTM SMOKE AND SOUND SEALANT SS 100 WHEN SURROUNDING TEMPERATURE IS LESS THAN 40°F (4°C) AND IN CONDITIONS WHEN SEALS MAY BE EXPOSED TO RAIN OR WATER SPRAY WITHIN 18 HOURS OF APPLICATION. DO NOT APPLY 3MTM SMOKE AND SOUND SEALANT SS 100 TO BUILDING MATERIALS THAT BLEED OIL, PLASTICIZERS OR SOLVENT (E.G. IMPREGNATED WOOD, OIL-BASED SEALANTS, OR GREEN OR PARTIALLY-VULCANIZED RUBBER) DO NOT APPLY 3MTM SMOKE AND SOUND SEALANT SS 100 TO WET OR FROST-COATED SURFACES OR AREAS THAT ARE CONTINUOUSLY DAMP OR IMMERSSED IN WATER.

NOTICE: THIS PRODUCT IS NOT FOR USE AS A COMMERCIAL FIRESTOP. THIS PRODUCT IS NOT ACCEPTABLE FOR USE WITH CHLORINATED POLYVINYLCHLORIDE (CPVC) PIPES.

4. DETAILS REPRESENT GENERAL INSTALLATION GUIDELINES TO SATISFY SMOKE PARTITION SEALING REQUIREMENTS OF THE CURRENT ADOPTION OF THE INTERNATIONAL BUILDING CODE OR LOCAL AUTHORITY HAVING JURISDICTION.

3M Fire Protection Products