

# ADAPTIC TOUCH™

NON-ADHERING SILICONE DRESSING

## Patient Guide

### What is it?

ADAPTIC TOUCH™ Dressing is a flexible, open-mesh primary wound contact layer comprised of cellulose acetate coated with a soft tack silicone.

### What is it for?

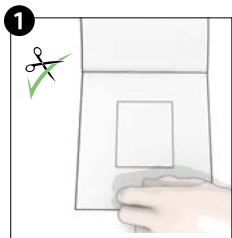
ADAPTIC TOUCH™ Dressing is designed as a primary wound contact layer for the management of a variety of wounds (see instructions for use for full details) where adherence of secondary dressing is to be prevented.

It is also suitable for use, under medical supervision, with negative pressure wound therapy (NPWT) for the protection of fragile wound structures.

### How to Apply:

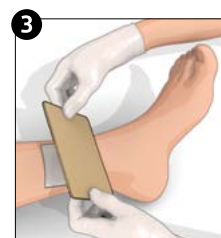
Refer to the instructions for use. Select a size of ADAPTIC TOUCH™ Dressing that is larger than the wound. Always wash your hands before and after dressing change. Prepare the wound according to appropriate wound management protocol. Ensure skin surrounding the wound is dry. Remove ADAPTIC TOUCH™ Dressing from the pouch.

#### Dressing preparation



1. If needed **ADAPTIC TOUCH™** Dressing may be cut to size with sterile scissors.
2. It is best to cut **ADAPTIC TOUCH™** Dressing whilst one or two backing papers are in place.

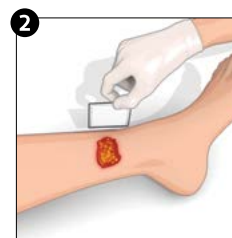
#### Secondary dressing application



Cover **ADAPTIC TOUCH™** Dressing with a secondary dressing such as TIELLE™ Hydropolymer Adhesive Dressing with LIQUALOCK™ Technology or 3M™ Tegaderm™ Foam Non Adhesive dressing.

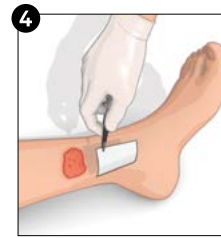
Choose the secondary dressing based on the level of exudate. Apply any secondary cover or retention/compression bandage.

#### Dressing application



1. Ensure the skin around the wound is dry. Remove one backing paper from **ADAPTIC TOUCH™** Dressing. Place **ADAPTIC TOUCH™** Dressing directly over the wound and smooth in place around the wound.
2. Remove the second backing paper using surgical tongs or forceps. If more than one piece of **ADAPTIC TOUCH™** Dressing is required, ensure dressings overlap to avoid secondary dressing adherence to the wound. Overlap should be minimised to prevent occlusion of holes.

#### Dressing change and removal



Dressing change frequency is dictated by good wound care practice and will depend on the condition of the wound. **ADAPTIC TOUCH™** Dressing may be left in place for several days.

1. Gently remove the secondary dressing.
2. Gently remove the dressing from the wound bed and discard.

### Frequently Asked Questions:

Can ADAPTIC TOUCH™ Dressing be left in place with only the secondary dressing changed?

Yes depending on the wound conditions, it may be possible to keep ADAPTIC TOUCH™ Dressing in place and only change the secondary dressing.

### How often to Apply:

ADAPTIC TOUCH™ Dressing may be left in place for several days depending on the condition of the wound.

**NOTE:** This document is intended for patient self-care as guided by their HCP and is not intended to replace the Instructions for Use.

**NOTE:** Specific indications, contraindications, warnings, precautions and safety information exist for these products and therapies. Please consult a clinician and product instructions for use prior to application. The instructions for use are intended for healthcare professionals.

©Copyright 2020 3M. All rights reserved. 3M and the other marks shown are marks and/or registered marks. Unauthorized use prohibited. PRA-PM-ALL-00360 (04/20)