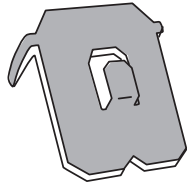


3M

CLAW™

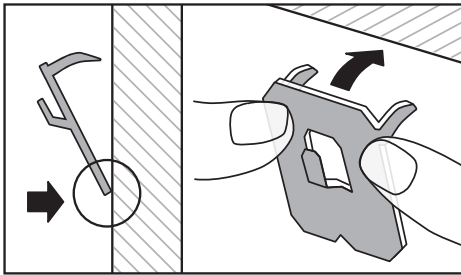
HEAVYWEIGHT HANGING SOLUTION

How-To Use

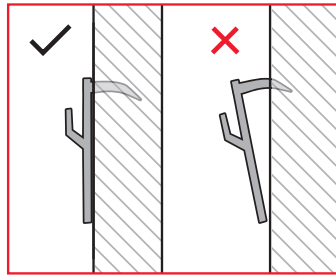


3M™ CLAW Drywall Picture Hanger(s)
To hang your frame.

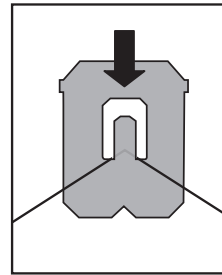
1 INSTALL HANGER



Keeping bottom edge against wall, place thumbs in upper corners of hanger and **push in** quickly and firmly.

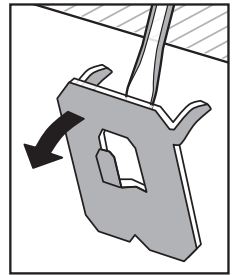


IMPORTANT
Continue to push until hanger is **completely flush** against wall.



Hang frame on hook.

REMOVAL



Slide a flat head screwdriver between the hook and wall, then gently pull away.