

How-To Use



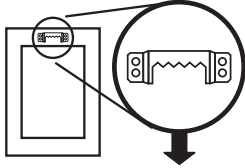
Temporary Spot Marker(s)
 To help find your hanging spot.
Marker does NOT hold frame up.



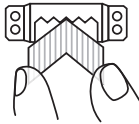
3M™ CLAW Drywall Picture Hanger(s)
 To hang your frame.

1 IDENTIFY FRAME HARDWARE

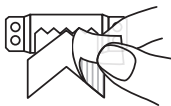
SAWTOOTH



Remove liner from gray side, exposing adhesive.

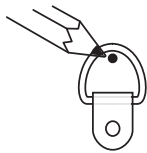
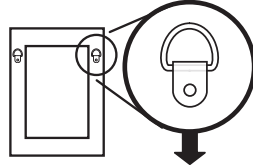


Stick marker to frame so that top point is where a nail would normally go.



Remove liner from white side.

D-RING



Mark a dot on the frame where a nail would normally go and flip down D-ring.

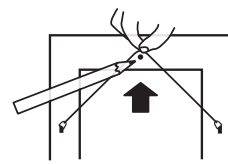
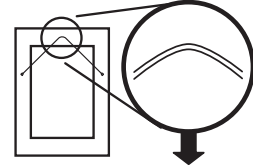


Remove liner from gray side and stick marker to the frame so that the top points to your dot.

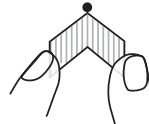


Remove liner from white side. Repeat on the other D-ring.

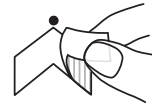
WIRE



Pull wire up as high as you can and mark a dot where a nail would normally go.



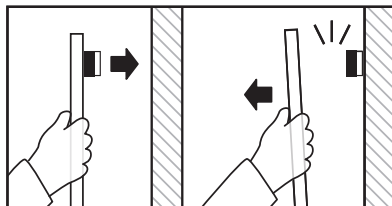
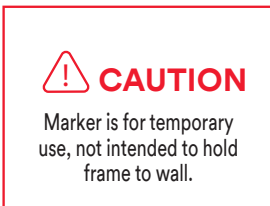
Remove liner from gray side and stick marker to the frame so that the top points to your dot.



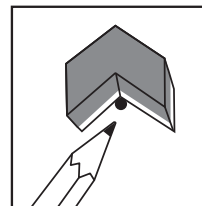
Remove liner from white side.

CONTINUE TO STEP 2

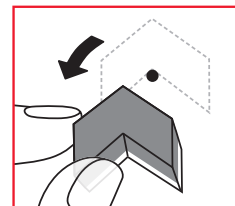
2 MARK HANGING SPOT



Lightly touch marker to wall and pull back without letting go of frame.

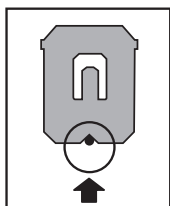


Mark the wall in the bottom notch of marker.

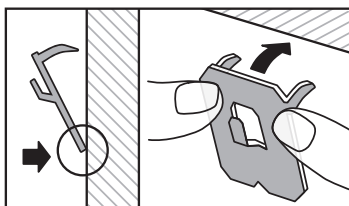


IMPORTANT
 Remove marker from wall.

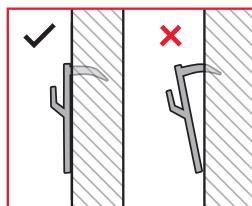
3 INSTALL HANGER



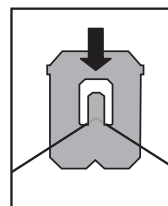
Align notch in bottom of hanger to dot on wall.



Keeping bottom edge against wall, place thumbs in upper corners of hanger and push in quickly and firmly.

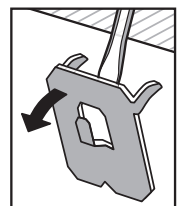


IMPORTANT
 Continue to push until hanger is completely flush against wall.



Hang frame on hook.

REMOVAL



Slide a flat head screwdriver between the hook and wall, then gently pull away.