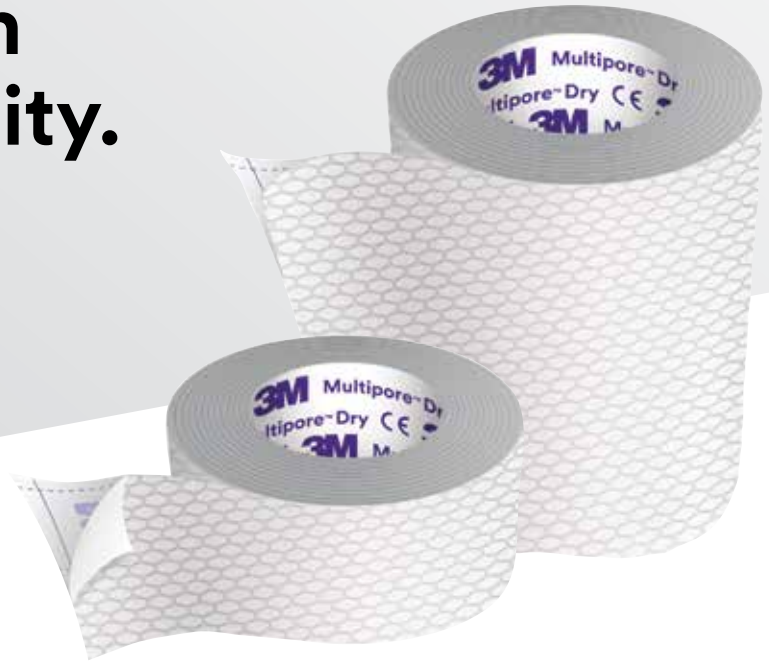


3M™ Multipore™ Dry Surgical Tape

# Built for strength and conformability.



## Reliable adhesion for your patients' important needs.

When you need to keep a tube, device or bulky dressing securely in place, you need adhesion you can count on. 3M™ Multipore™ Dry Surgical Tape is a high-strength, conformable tape that gives you confidence in your securement applications.



### Strong adhesion

Good initial adhesion to dry and wet skin.



### Easy to use

Removable grid liner for precise cutting and customization to any shape and size with scissors.



### Strong backing

Specialized backing repels water and resists tearing under stress.



### Conformable

Soft backing that conforms to curves and contours of the skin.

## Why choosing the right tape matters



In one study

**48.5%**

of patients had a nasogastric tube dislodgement.<sup>1</sup>

# 3M™ Multipore™ Dry Surgical Tape

## High-strength securement

Clinical applications such as:

- Urinary catheters
  - Nasogastric tubes
  - Endotracheal tubes
  - Orogastric tubes
  - Patient positioning
  - Secondary securement of central lines
- ▶ For use in dry conditions
  - ▶ Maintain close clinical oversight when excessive fluids and/or secretions are present
  - ▶ Tape securement and tube position should be monitored routinely

Consider a barrier like 3M™ Cavilon™ No Sting Barrier Film with Multipore Dry Surgical Tape (per facility protocol).

**Tape material:** Two-layer cloth. Not made with natural rubber latex.



## Ordering information

Catalog Number	Size	Rolls/Box	Boxes/Case	HCPCS Code
3730-0	0.5 in. x 5.5 yd. (1,25 cm x 5 m)	12	4	A4452
3730-1	1 in. x 5.5 yd. (2,5 cm x 5 m)	24	4	A4452
3730-2	2 in. x 5.5 yd. (5 cm x 5 m)	12	4	A4452

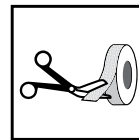
For more information about 3M™ Multipore™ Dry Surgical Tape and other 3M Medical Securement Solutions, visit [3M.com/MedicalSecurement](https://www.3m.com/MedicalSecurement).

## Application techniques for tube securement:

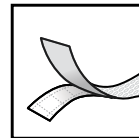
- ▶ Ensure skin, and device if applicable, is clean and dry.

Per facility protocol, consider use of a barrier film to protect at-risk skin.

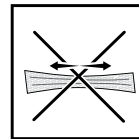
- ▶ When the area is completely dry, follow these steps:



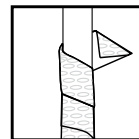
Cut tape length to meet clinical need



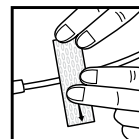
Remove the liner



Place tape on skin without stretching or strapping to avoid causing tension blisters



Spiral tape around device as applicable to maximize surface area contact



Apply firm pressure to tape and device (if applicable) to maximize adhesion

- ▶ Maintain close clinical oversight when excessive fluids and/or secretions are present.
- ▶ Tape securement and tube position should be monitored routinely.



**Medical Solutions Division**  
3M Health Care  
2510 Conway Ave.  
St. Paul, MN 55144 USA

Phone 1-800-228-3957  
Web [3M.com/medical](https://www.3m.com/medical)

3M medical securement products are intended for use on intact skin.

<sup>1</sup>Pancordo-Hidalgo, P., Garcia-Fernandez, F., Ramirez-Perez, C. (2001). Complications associated with enteral nutrition by nasogastric tube in an internal medicine unit. *Journal of Clinical Nursing*. Site accessed February 3, 2020. <https://doi.org/10.1046/j.1365-2702.2001.00498.x>

3M, Multipore and Cavilon are marks and/or registered marks of 3M. Unauthorized use prohibited. Please recycle. Printed in USA. © 3M 2020. All rights reserved. GL\_70-2011-7955-6