

Adper™ Single Bond 2 Adhesive
Vitremer™ Core Buildup/Restorative
Filtek™ Z250 Universal Restorative
Sof-Lex™ Discs, Strips and Finishing Brush

Indications:

- Direct posterior restorations where the benefits of glass ionomers and composites are desired.
- Note that this technique is indicated where cavity design allows for a minimum composite restorative thickness of 2mm on the occlusal surface.

Prepare/Prime:

- Conservatively prepare the tooth; place matrix bands and wedges.
- Apply Vitremer primer for 30 seconds to all dentin surfaces; air dry.
- Light-cure for 20 seconds.



Apply glass ionomer:

- Mix Vitremer powder and liquid according to product instructions; back load into delivery tip.
- Syringe Vitremer restorative into the preparation, extending no further than just apical to the proximal contact.
- Light-cure for 40 seconds.



Freshen preparation margins/Etch:

- Using a rotary instrument, remove excess Vitremer restorative material from enamel margins and cavity walls that will be bonded.
- Apply Scotchbond™ Etchant to enamel and exposed dentin; wait 15 seconds, then rinse. **Blot excess water, leaving tooth moist.***

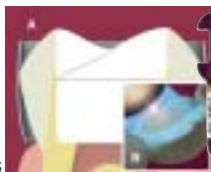


**Adper™ Single Bond 2 Adhesive
Vitremer™ Core Buildup/Restorative
Filtek™ Z250 Universal Restorative
Sof-Lex™ Discs, Strips and Finishing Brush**



Bond:

- Immediately after blotting, apply 2-3 consecutive coats of Adper Single Bond 2 adhesive to enamel, dentin and Vitremer restorative base material for 15 seconds with gentle agitation using a fully saturated applicator.
- Gently air thin for 5 seconds to evaporate solvents.
- Light-cure for 10 seconds.



Place Restorative:

- Place Filtek Z250 Restorative in increments.
- Light-cure each increment. (Reference Light-Cure chart for increment thickness and cure time.)



Finish and Polish:

- Finish occlusal surface using a Sof-Lex Finishing Brush.
- Finish proximal surfaces with Sof-Lex Extra Thin Discs and Strips.



Check Occlusion:

- Check lateral and centric occlusion.
- Adjust if necessary.

2 of 2

3M ESPE Technical Hotline 1-800-634-2249

Please refer to instructions for more detailed information as well as precautionary and warranty information.

3M, ESPE, Adper, Vitremer, Filtek, Scotchbond and Sof-Lex are trademarks of 3M or 3M ESPE AG. Used under license in Canada.

44-0007-4178-3

© 2004 3M