

**3M** Science.  
Applied to Life.™

# Durable daytime road presence and nighttime visibility.

3M™ Stamark™ Pavement Marking Tape Series 380

← **3X**  
brighter  
than standard markings  
after 15 months

Assessment of the Durability of Wet Night Visible Pavement Markings:  
Wet Visibility Project Phase IV; Virginia Tech Transportation Institute

3M™ Stamark™ Pavement Marking Tape Series 380



# Durable by design.

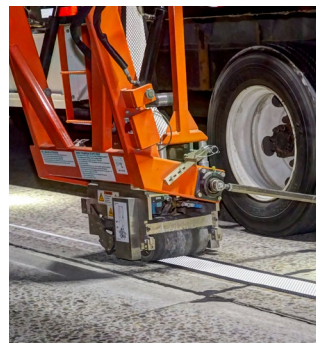
More durable pavement markings reduce the need for frequent costly lane closures associated with replacing markings. 3M™ Stamark™ Pavement Marking Tape Series 380 is ideal for permanent long line applications on high-traffic roadways.

Get the durability, wet reflectivity and high-contrast visibility you need to help make roads easier and safer to navigate. These pre-formed reflective tapes are for permanent-type applications such as lane and center lines, edge lines, gore markings, symbols and legends.



## Long-lasting day and nighttime visibility.

Dirt and abrasion resistance is an integral part of Stamark Series 380—from the zirconia-enriched retroreflective beads to the brilliant white and yellow topcoats.



## Easy application.

Pre-formed tape is easy to apply—just unwind, apply and tamp. For an extended season, series 380IES can be applied early and late season, at temperatures down to 40°F (4°C) with use of our Surface Preparation Adhesive.

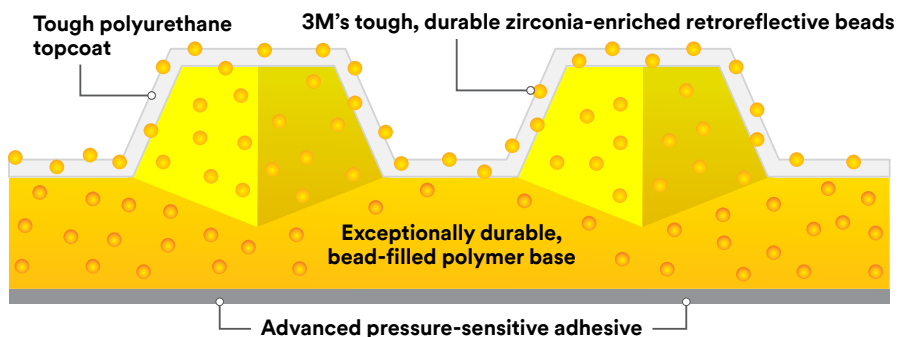
## Built for the long haul.

The unique zirconia-enriched retroreflective beads used in Stamark Series 380 are far tougher, harder and more resistant to harsh conditions than conventional glass beads—retaining their visibility long after other beads become ineffective.

## Pre-formed and ready from the box.

No installation variability—Stamark Series 380 is manufactured in the USA to the high quality standards you expect from 3M.

## How it works.



*A cross-section of 3M™ Stamark™ Pavement Marking Tape Series 380 shows 3M's advanced technologies in every aspect of construction, inside and out.*



**59%**  
of fatal crashes  
happen during dark or  
poor light conditions.

Source: Federal Highway Administration

**70%** of weather related  
vehicle crashes  
occur on wet pavement or when it's raining.

Source: [https://ops.fhwa.dot.gov/weather/q1\\_roadimpact.htm](https://ops.fhwa.dot.gov/weather/q1_roadimpact.htm)  
<https://www-fars.nhtsa.dot.gov/Crashes/CrashesTime.aspx>  
<https://crashstats.nhtsa.dot.gov/Api/Public/ViewPublication/810637>

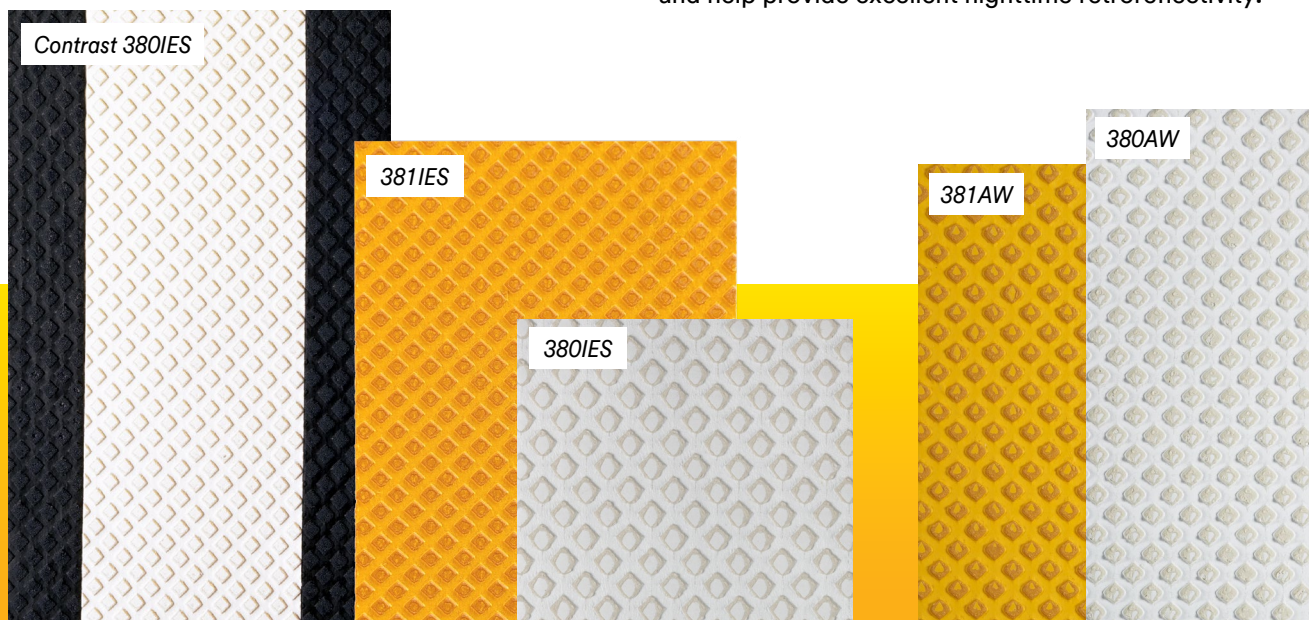
Our high-performance pavement marking tapes are ideal for interstates, dark rural roads and urban streets where nighttime reflectivity is critical. These tapes are built to last with abrasion-resistant zirconia-enriched retroreflective beads bonded in a highly durable polyurethane topcoat.

### **3M™ Stamark™ All Weather Tape Series 380AW**

Provides excellent retroreflectivity in both dry and rainy conditions, with a combination of 3M's 2.4 and 1.9 index optics, providing you all weather performance. The high-profile diamond pattern aids in water dispersion, helping to improve wet recovery.

### **3M™ Stamark™ High Performance Tape Series 380IES**

Our durable 1.9 index optics show bright white during the day and help provide excellent nighttime retroreflectivity.



# Product Specifications

Application	Series	Product	Color	Available Marking Width (Inches)	Available Contrast Width (Inches)	Optics
Long Line	A380IES	A380IES	White	4, 5, 6, 8, 10, 12, 18, 24		Dry
Long Line	A380IES	A381IES	Yellow	4, 5, 6, 8, 12, 24		Dry
Long Line	A380IES	A385ES	Black	2, 4, 5, 6		None
Long Line	A380IES Contrast	A380I-5ES	White	4, 5, 6, 8	1.5, 2*	Dry
Long Line	A380IES Contrast	A381I-5ES	Yellow	4, 5, 6	1.5, 2*	Dry
Long Line	380AW	A380AW	White	4, 5, 6, 8, 10, 12, 24		All Weather
Long Line	380AW	A381AW	Yellow	4, 5, 6, 8, 12, 24		All Weather
Long Line	380AW	A385AW	Black	2, 4, 5, 6		None
Long Line	380AW Contrast	A380AW-5	White	4, 5, 6, 8	1.5, 2*	All Weather
Long Line	380AW Contrast	A381AW-5	Yellow	4, 5, 6, 8	1.5, 2*	All Weather
Symbols & Legends	380IES	SMS-L380IES	White	Standard MUTCD Configurations	1.5	Dry
Symbols & Legends	380AW	SMS-L380AW	White	Standard MUTCD Configurations	1.5	All Weather

\*2 inch available only with 6 inch tape.

## We're here to help.

3M offers 24/7 support to help ensure your success in the planning and installation of our pavement markings. Our engineers understand the conditions and challenges you face during installation and are here to help you ensure your project is a success.

Contact an application specialist at 1-800-553-1380.

Find technical specifications and application information documents in the Resource Library:

### ***Product Bulletin:***

Stamark™ High Performance All Weather Tape Series 380AW

### ***Product Bulletin:***

3M™ Stamark™ High Performance Tape Series 380IES

### ***Application Folder 5.7:***

Stamark™ Surface Preparation and Application Techniques

Keep moving forward at [3M.com/PavementMarkings](https://www.3m.com/PavementMarkings).



Commercial Branding &  
Transportation Division  
3M Center, Building 223-3N-30  
St. Paul, MN 55144-1000  
[3M.com/PavementMarkings](https://www.3m.com/PavementMarkings)

3M and Stamark are trademarks of 3M.  
© 3M 2025. All rights reserved.