

# Poultry processing solutions from start to finish.



**3M Australia Pty Ltd**

Bldg A, 1 Rivett Road  
North Ryde NSW 2113  
Phone: 136 136  
Web: [3M.com.au/FoodSafety](http://3M.com.au/FoodSafety)

**3M New Zealand Limited**

94 Apollo Drive  
Rosedale Auckland 0632  
Phone: 0800 80 81 82  
Web: [3M.co.nz/FoodSafety](http://3M.co.nz/FoodSafety)

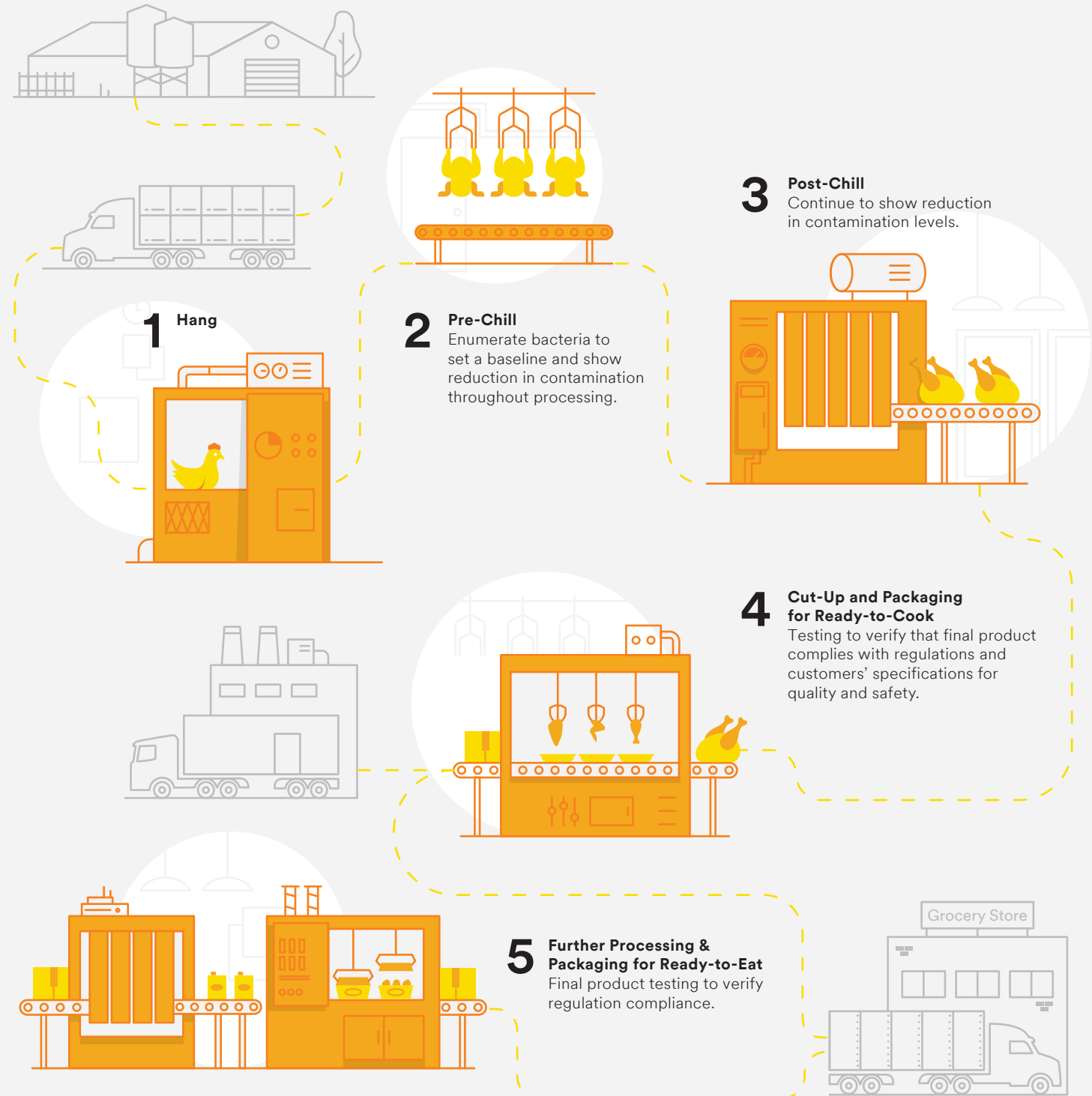


- 1 Hang**
  - 3M™ Petrifilm™ Staph Express Count Plates
  - 3M™ Molecular Detection Assay 2 - *Salmonella*
  - 3M™ Clean-Trace™ Surface ATP Test Swab UXL100
  - 3M™ Flip-Top Dilution Bottles
  - 3M™ Sponges
  - 3M™ Swabs
- 2 Pre-Chill**
  - 3M™ Petrifilm™ Aerobic Count Plates or 3M™ Petrifilm™ Rapid Aerobic Count Plates
  - 3M™ Petrifilm™ *E. coli*/Coliform Count Plates or 3M™ Petrifilm™ Rapid *E. coli*/Coliform Count Plates
  - 3M™ Petrifilm™ *Enterobacteriaceae* Count Plates
  - 3M™ Molecular Detection Assay 2 - *Campylobacter*
  - 3M™ Molecular Detection Assay 2 - *Salmonella*
  - 3M™ Clean-Trace™ Surface ATP Test Swab UXL100
  - 3M™ Bird Rinse
  - 3M™ Bird Rinse Plain Sample Bag or 3M™ Sample Bags
  - 3M™ *Campylobacter* Enrichment Broth
  - 3M™ Enrichment Pouches
  - 3M™ Flip-Top Dilution Bottles
- 3 Post-Chill**
  - 3M™ Petrifilm™ Aerobic Count Plates or 3M™ Petrifilm™ Rapid Aerobic Count Plates
  - 3M™ Petrifilm™ *E. coli*/Coliform Count Plates or 3M™ Petrifilm™ Rapid *E. coli*/Coliform Count Plates
  - 3M™ Petrifilm™ *Enterobacteriaceae* Count Plates
  - 3M™ Molecular Detection Assay 2 - *Campylobacter*
  - 3M™ Molecular Detection Assay 2 - *Salmonella*
  - 3M™ Clean-Trace™ Surface ATP Test Swab UXL100
  - 3M™ Bird Rinse
  - 3M™ Bird Rinse Plain Sample Bag or 3M™ Sample Bags
  - 3M™ *Campylobacter* Enrichment Broth
  - 3M™ Enrichment Pouches
  - 3M™ Flip-Top Dilution Bottles

- 4 Cut-Up and Packaging for Ready-to-Cook**
  - 3M™ Petrifilm™ Aerobic Count Plates or 3M™ Petrifilm™ Rapid Aerobic Count Plates
  - 3M™ Petrifilm™ *E. coli*/Coliform Count Plates or 3M™ Petrifilm™ Rapid *E. coli*/Coliform Count Plates
  - 3M™ Petrifilm™ *Enterobacteriaceae* Count Plates
  - 3M™ Molecular Detection Assay 2 - *Campylobacter*
  - 3M™ Molecular Detection Assay 2 - *Salmonella*
  - 3M™ Clean-Trace™ Surface ATP Test Swab UXL100
  - 3M™ Bird Rinse
  - 3M™ Bird Rinse Plain Sample Bag or 3M™ Sample Bags
  - 3M™ *Campylobacter* Enrichment Broth
  - 3M™ Enrichment Pouches
  - 3M™ Flip-Top Dilution Bottles

- 5 Further Processing & Packaging for Ready-to-Eat**
  - 3M™ Petrifilm™ *E. coli*/Coliform Count Plates or 3M™ Petrifilm™ Rapid *E. coli*/Coliform Count Plates
  - 3M™ Petrifilm™ *Enterobacteriaceae* Count Plates
  - 3M™ Petrifilm™ Lactic Acid Bacteria Count Plates
  - 3M™ Petrifilm™ Staph Express Count Plates
  - 3M™ Petrifilm™ Yeast and Mold Count Plates or 3M™ Petrifilm™ Rapid Yeast and Mold Count Plates
  - 3M™ Molecular Detection Assay 2 - *Listeria*
  - 3M™ Molecular Detection Assay 2 - *Listeria monocytogenes*
  - 3M™ Clean-Trace™ Surface ATP Test Swab UXL100
  - 3M™ Allergen Testing
  - 3M™ Flip-Top Dilution Bottles
  - 3M™ Sponges
  - 3M™ Swabs

Browse poultry solutions at  
**3M.com.au/PoultryProducts** (Australia) or  
**3M.co.nz/PoultryProducts** (New Zealand)



Third-party-validated test methods show equivalence to reference methods and are recognized by most governing bodies.