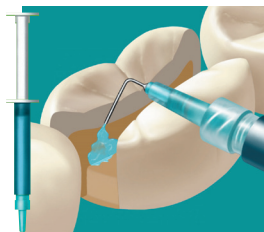


Adper™ Scotchbond™ Multi-Purpose Plus Adhesive System



Indications:

- Bonding inlays, onlays, crowns and adhesive bridges fabricated of porcelain, metal or composite. In cases where core material is present, roughen the core material and apply all solutions indicated for enamel and dentin.



1

Etchant:

- Apply Scotchbond™ Etchant to enamel and dentin - wait 15 seconds.
- Rinse.
- Remove excess water with an air syringe or by blotting. Leave moist.



2

Activator:

- Apply activator to etched enamel and dentin.
- Dry gently for 5 seconds.



3

Primer:

- Apply primer to activated enamel and dentin.
- Dry gently for 5 seconds. Surface will appear shiny.

Adper™ Scotchbond™ Multi-Purpose Plus Adhesive System



4

Catalyst:

- Apply Catalyst to primed enamel and dentin.



5

Bonding Surface Preparation:

- Roughen the bonding surfaces of indirect composite restorations with a diamond. Treat both etched porcelain and roughened metal surfaces with RelyX™ Ceramic Primer and dry.

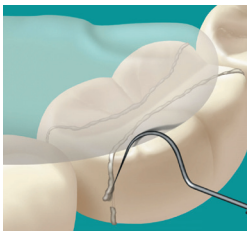


6

Restorative preparation:

- Apply Catalyst to the bonding surface of the restoration.
- Mix and apply a self-cure or dual-cure luting material to the bonding surface of the restoration.

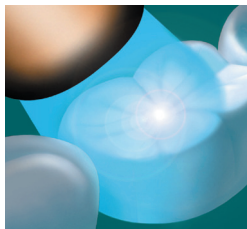
Adper™ Scotchbond™ Multi-Purpose Plus Adhesive System



7

Seating the Restoration:

- Seat the restoration.
- Remove excess cement.



8

Completing the Restoration:

- If a dual-cure luting material was used, light cure the margins.
- Finish margins using technique appropriate to the type of restoration placed

Adper™ Scotchbond™ Multi-Purpose Plus
Adhesive System

3M ESPE Customer Care/MSDS Information:

U.S.A. 1-800-634-2249 and Canada 1-888-363-3685

3M, ESPE, Adper and Scotchbond are trademarks of 3M or 3M Deutschland GmbH.
Used under license in Canada. © 3M 2012. All rights reserved.

3M ESPE

Dental Products, 2510 Conway Avenue, St. Paul, MN 55144-1000 USA • www.3MESPE.com

