

# Crown Quick Start Guide

## 3M™ Chairside Zirconia



### Indications

- anterior and posterior crowns
- crowns on implant abutments
- anterior and posterior 3-unit bridges
- inlays, onlays and veneers

### Tooth Preparation

A chamfer preparation is recommended.

### Design Parameters

The following design specifications must be fulfilled for the finished restorations:

	Wall thickness	Bridge connector cross section
Anterior	≥ 0.8 mm	≥ 12 mm <sup>2</sup>
Posterior	≥ 0.8 mm	≥ 14 mm <sup>2</sup>

Maintain **0.8 mm** minimum wall thickness!



### Cementation

Depending on your preferences and the case at hand, 3M recommends 3M™ RelyX™ Unicem Self-Adhesive Resin Cement or 3M™ RelyX™ Ultimate Adhesive Resin Cement.

### Aesthetics designed to match the VITA® classical shade guide

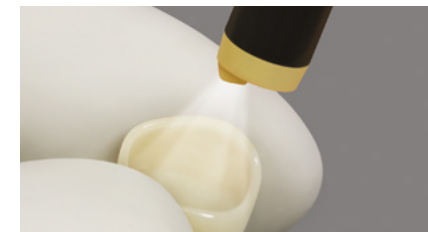


Each zirconia block comes pre-shaded in Bleach, A1, A2, A3, A3.5, B1, C1 and D2 shades designed to match VITA classical shades. The result? Easy matching of 3M Chairside Zirconia to each patient's tooth shade.

### Pre-treatment of bonding surface



Sandblast with alumina, 30-50 μm grain size at 2 bars (30PSI) to create a matte appearance.

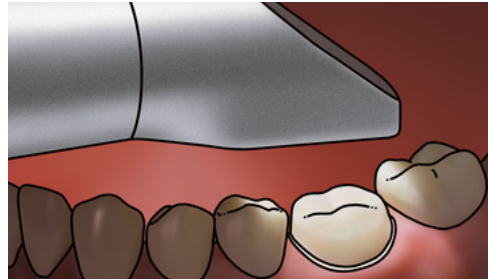


Clean with alcohol and dry with oil-free air.

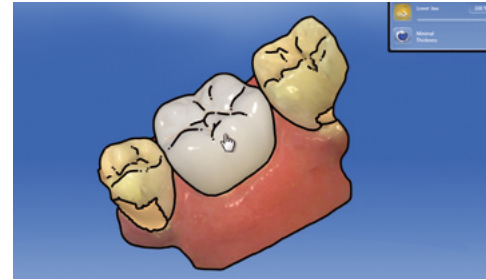
⚠ **Tip:** After try-in, clean saliva contamination with NaOCl (ca.5%) and rinse with water. Do not use phosphoric acid for cleaning. If you prefer, sandblasting can be done after try-in to remove saliva contamination.



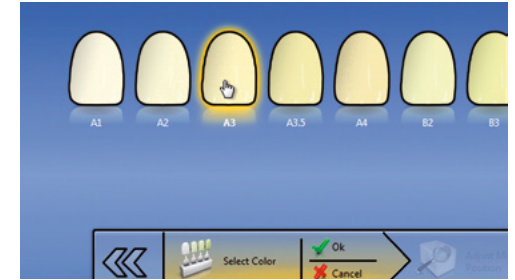
1. Prep the tooth and select the shade.



2. Scan preparation.



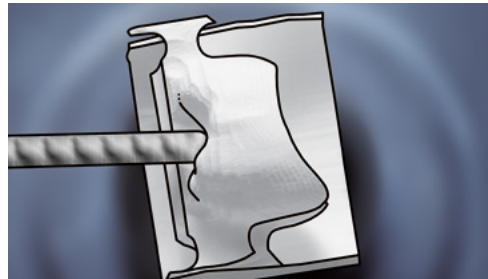
3. Design.



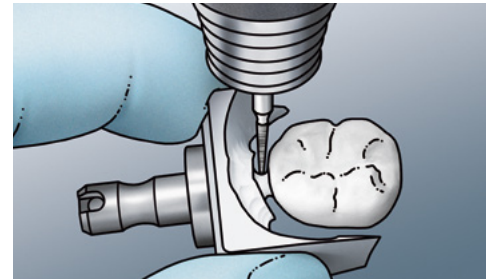
4. Colour choice.



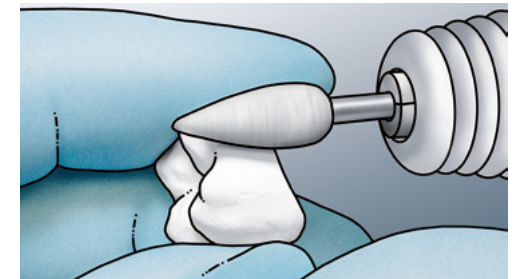
5. The scaling factor is shown on each block and must be entered into the system prior to milling.



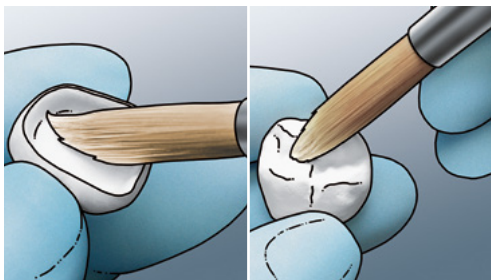
6. The material can be wet or dry milled. Dry milling is recommended. Clean milling chamber before processing 3M™ Chairside Zirconia to avoid contamination. When wet milling, use distilled or deionised water.



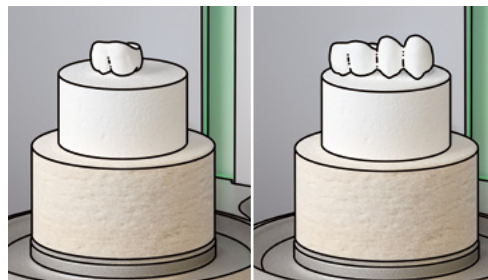
7. Use a diamond bur to separate the restoration from the mandrel.



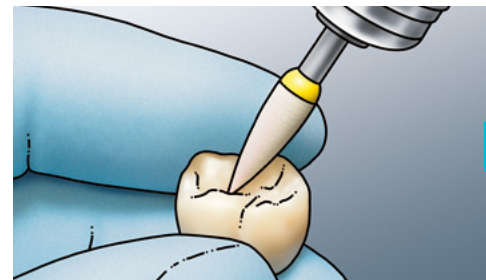
8. Carefully smooth the sprue area with rubber points and cups.



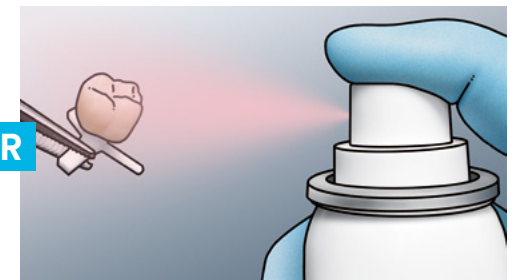
9. Remove all milling dust from all surfaces using a soft artificial hair brush.



10. Place the restoration in the furnace chamber with the occlusal or lingual surface facing down. Refer to the sintering parameters in the 3M™ Chairside Zirconia Instructions for Use.



OR



11. Use polishers suitable for zirconia restorations -OR- use a glaze specifically designed for zirconia restorations and suitable for use in the sintering furnace. Be sure to protect the internal surface of the restoration with the required paste. Follow all manufacturers instructions for glazing. If restoration is adjusted after try-in, be sure to repolish the adjusted areas.

**3M Oral Care**

3M Australia Pty Limited | Building A, 1 Rivett Road, North Ryde, NSW 2113 | Ph: 1300 363 454  
3M New Zealand Limited | 94 Apollo Drive, Rosedale, Auckland 0632 | Ph: 0800 80 81 82

Always follow the Instructions for Use (IFU) and refer to IFU for full indications, precautions and warnings. Claims supported by 3M data on file.  
3M, "3M Science. Applied to Life." and RelyX are trademarks of 3M. All other trademarks are owned by other companies. © 3M 2019. All rights reserved.