

# Filtek™ Bulk Fill Posterior Restorative

## Class II Amalgam Replacement

Clinical photography by: Dr. Robert Margeas, DDS

### About the Case:

The patient presented with recurrent decay under an aging amalgam. Because of the presence of decay as well as the depth of the prep, Vitrebond™ Light Cure Glass Ionomer Liner/Base was chosen and applied to the deepest dentin. After application of the liner, the selective etch approach using Single Bond Universal Adhesive was chosen for its excellent seal on enamel margins while minimizing the chance of post-operative sensitivity. Once the adhesive is cured, Filtek™ Bulk Fill Posterior Restorative was placed in a single increment up to 5mm. Post-operative photos taken two weeks after placement indicate a very pleasing result.

### Step-by-Step:



Fig. 1: Pre-operative condition.



Fig. 2: After removal of failing amalgam.



Fig. 3: Use of micro air abrasion to clean the cavity preparation.



Fig. 4: Application of Vitrebond™ Light Cure Glass Ionomer Liner/Base.

### Challenge:

A deep Class II restoration can be prone to post-operative sensitivity. Use of a liner/base such as Vitrebond Liner/Base, as well as a self-etch bonding approach on dentin, combines two techniques for keeping post-operative sensitivity to a minimum. Once the bonding agent is in place, the bulk fill approach allows for a fast, efficient placement technique for posterior restorations.

# Filtek™ Bulk Fill Posterior Restorative

## Class II Amalgam Replacement



Fig. 5: Etchant applied using the selective enamel etch technique.

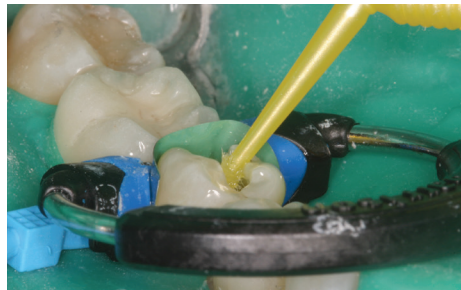


Fig. 6: Application of Single Bond Universal Adhesive.

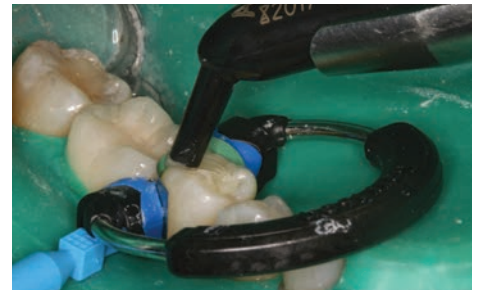


Fig. 7: Placement of Filtek™ Bulk Fill Posterior Restorative in a single increment.



Fig. 8: Polishing with Sof-Lex™ Spiral Polishing Wheel (white).



Fig. 9: Immediately post-polishing; adjacent enamel is still desiccated.



Fig. 10: Final restoration, two weeks post-op.

### The 3M Difference:

3M innovations such as Single Bond Universal Adhesive, Filtek™ Bulk Fill Posterior Restorative and Sof-Lex™ Spiral Finishing and Polishing Wheels provide an efficient and simple procedure while also reducing costly chair time. In cases where deep posterior restorations are presented, Vitrebond™ Light Cure Glass Ionomer Liner/Base can reduce the risk of post-op sensitivity.

Dr. Margeas has received honoraria from 3M ESPE Dental.



### 3M India Limited

Concorde Block, UB City  
24, Vittal Mallya Road, Bangalore - 560001  
Tel : +91-80-6659 5759 | Email - 3moralcare.in@mmm.com  
Website - www.3mindia.in/oralcare

3M Health Care Academy is a service mark of 3M. © 3M 2018. All rights reserved.