

Filtek™ Bulk Fill Posterior Restorative

A Small Class I Restoration

Clinical dentistry and photography by: Dr. Robert Margeas, DDS

About the Case:

The 18 year old patient presented with sensitivity on the occlusal surface of tooth No. 3. Examination indicated decay requiring a restoration. Composite technique allows for minimal removal of tooth structure, and a small Class I cavity was prepared. The selective etch bonding technique was chosen to optimize the bond to enamel while reducing the chance of post-operative sensitivity. Filtek™ Bulk Fill Posterior Restorative allowed the cavity to be filled in a single increment.

Step-by-Step:



Fig. 1: Preoperative condition. Note occlusal decay.



Fig. 2: Isolated and prepared tooth

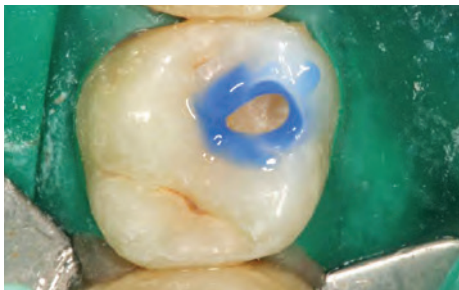


Fig. 3: Selective etch of the enamel margins.



Fig. 4: Application of Single Bond Universal Adhesive. After evaporating the ethanol and water, the adhesive was light-cured. **NOTE:** The adhesive will self-etch dental surfaces.

Challenge:

The amount of stress placed on a tooth by polymerization stress varies with the number of bonded surfaces. The term Configuration Factor, or C Factor, was coined by Feilzer et al in 1987 to describe this effect. A small Class I restoration such as presented in this case can apply more stress than one might expect, as Class I restorations have the most bonded surfaces and hence the highest C Factor.

Filtek™ Bulk Fill Posterior Restorative

A Small Class I Restoration

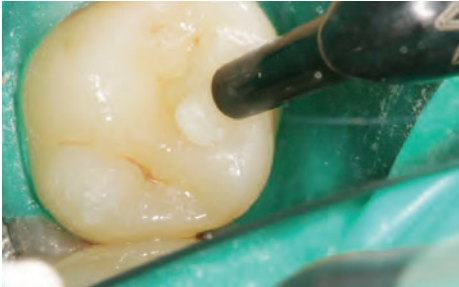


Fig. 5: Filtek™ Bulk Fill Posterior Restorative can be applied in a single increment of up to 4mm for a Class I restoration and light cured according to the instructions for use.



Fig. 6: Initial finishing was accomplished using a Sof-Lex™ Spiral Finishing Disc (tan).



Fig. 7: Polishing was accomplished using a Sof-Lex™ Spiral Polishing Disc (white).

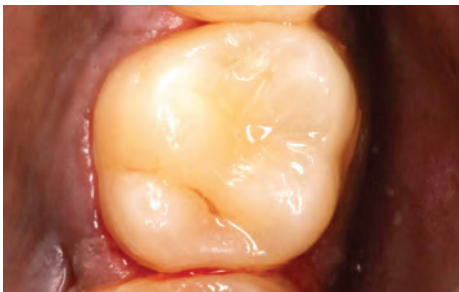


Fig. 8: The completed restoration.

The 3M Difference:

Filtek™ Bulk Fill Posterior Restorative incorporates a new methacrylate monomer that helps to relieve shrinkage stress during the polymerization reaction allowing for fast and easy posterior restorations. Used in conjunction with other 3M solutions, this one-step placement technology can help you simplify your restorative procedure.

Dr. Margeas has received honoraria from 3M ESPE Dental.

3M ESPE

3M India Limited

Concorde Block, UB City
24, Vittal Mallya Road, Bangalore - 560001
Tel : +91-80-6659 5759 | Email - 3moralcare.in@mmm.com
Website - www.3mindia.in/oralcare

3M, ESPE, Filtek and Sof-Lex are trademarks of 3M or 3M Deutschland GmbH. Used under license in Canada.

Please recycle. © 3M 2015. All rights reserved.