

Filtek™ Bulk Fill Posterior Restorative

Efficient Core Buildup Technique

Clinical dentistry and photography by: Dr. James Braun, DDS, MS

About the Case:

Many materials, from glass ionomers to composites can be used for this important procedure. In this case, the patient presented with a fracture on tooth 29, in which endodontic treatment was required. Given the minimal remaining tooth structure, a strong, highly bonded core buildup was indicated.

Step-by-Step:



Fig. 1: Post endodontic situation. Note: limited tooth structure.



Fig. 2: RelyX™ Fiber Post has been cemented using RelyX™ U200 Automix Self-Adhesive Resin Cement.



Fig. 3: Filtek™ Bulk Fill Posterior Restorative dispensed into polycarbonate crown form.



Fig. 4: After application of Single Bond Universal Adhesive and the endodontic post, the crown form with Filtek™ Bulk Fill Posterior Restorative was placed and cured according to the instructions for use.

Challenge:

A core buildup material must be strong and dimensionally stable. In general, composite materials satisfy both of these requirements. The new generation of bulk fill materials like Filtek™ Bulk Fill Posterior Restorative improves the efficiency of the core buildup procedure by eliminating the need for incremental placement. Filtek Bulk Fill Posterior Restorative can be placed and cured up to 5 mm.

Filtek™ Bulk Fill Posterior Restorative

Efficient Core Buildup Technique



Fig. 5: After preparation and ready for impressing.

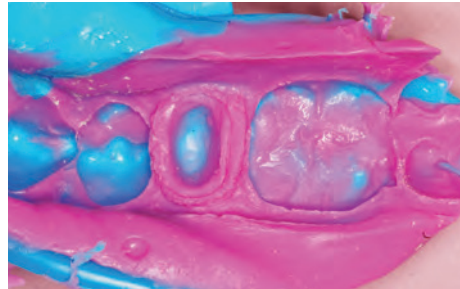


Fig. 6: Detailed impression using Imprint™ 4 VPS Impression Material.



Fig. 7: Lava™ Zirconia crown cemented with RelyX™ U200 Automix Self-Adhesive Resin Cement, Shade A2. Excess cement can be removed via tack-cure.



Fig. 8: The final Lava™ Zirconia restoration.

The 3M Difference:

With its stress relief properties and up to 5 mm depth of cure, Filtek™ Bulk Fill Posterior Restorative enables a fast and easy core buildup. When used together, Single Bond Universal Adhesive can provide the versatility you're looking for to help streamline the core buildup procedure.

Dr. Braun has received honoraria from 3M ESPE Dental.

3M ESPE

3M India Limited

Concorde Block, UB City
24, Vittal Mallya Road, Bangalore - 560001
Tel : +91-80-6659 5759 | Email - 3moralcare.in@mmm.com
Website - www.3mindia.in/oralcare

3M, ESPE, Filtek, Imprint, Lava, RelyX and Unicem are trademarks of 3M or 3M Deutschland GmbH. Used under license in Canada.

Please recycle. © 3M 2015. All rights reserved.