

**3M** Science.  
Applied to Life.™



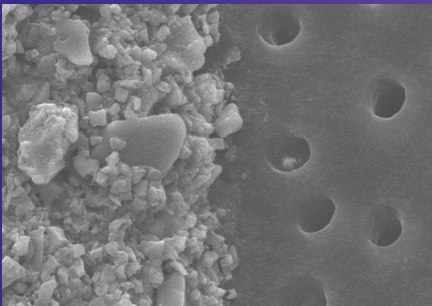
**Fast sensitivity relief.  
Slow fluoride release.**

**Clinpro™ XT Varnish Durable  
Fluoride-Releasing Coating**

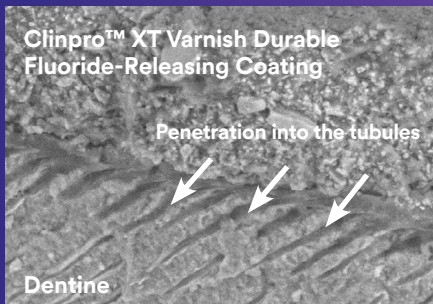


# Long-term protection

## Clinpro™ XT Varnish Durable Fluoride-Releasing Coating seals and protects dentine tubules



SEM image of exposed dentine tubules (right) and Clinpro™ XT Varnish Durable Fluoride-Releasing Coating (left) at 3000x magnification illustrates the barrier effect.



Cross-sectional SEM image of Clinpro™ XT Varnish Durable Fluoride-Releasing Coating coated on dentine at 1000x magnification illustrates the resin tags penetrating the tubules.



Clinpro™ XT Varnish Durable Fluoride-Releasing Coating is virtually invisible when applied to the tooth surface.

## The protective barrier that immediately relieves sensitivity, delivers fluoride and lasts 6 months

Clinpro XT Varnish Durable Fluoride-Releasing Coating is a site-specific, light cured, durable coating that provides an immediate layer of protection to relieve dentinal hypersensitivity.

- Great for protecting exposed, sensitive root surfaces, especially newly cleaned surfaces following scaling and root planing
- Remains on the tooth for 6 months or longer<sup>1</sup>
- Moisture tolerant: no need to dry or pre-treat the root surface
- Does not require the use of a rubber dam
- Delivers fluoride, calcium and phosphate

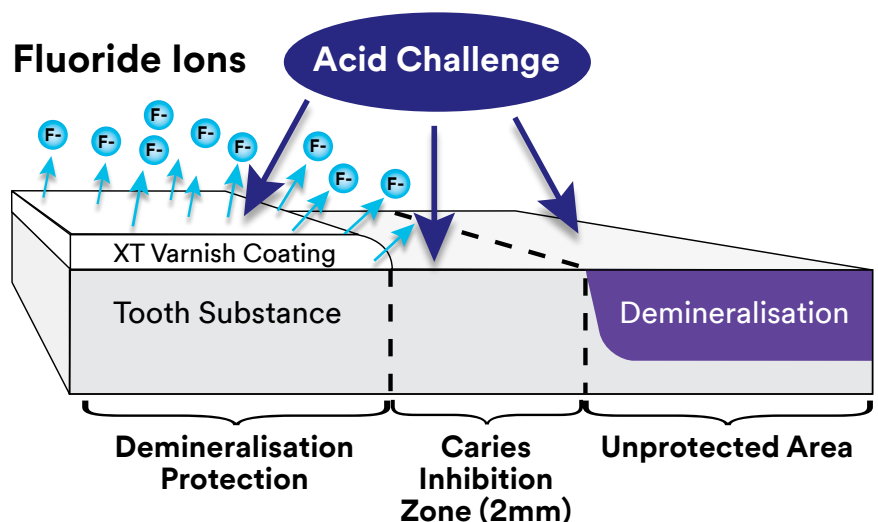
## Clinpro XT Varnish reduces dentine permeability by 88%<sup>2</sup>

Occluding dentinal tubules in-office provides immediate relief from pain associated with the movement of fluid through open tubules. In addition to creating a protective layer on exposed dentine, Varnish XT has been shown to both penetrate and seal tubules. Laboratory testing demonstrates that Varnish XT varnish reduces dentine permeability by 88%.

## Clinpro XT Varnish protects the tooth surface from acid attack

In vitro tests conducted with Clinpro XT Varnish demonstrate that the coating:

- Creates a barrier against demineralisation and acid erosion<sup>3</sup>
- Provides protection beyond the coating<sup>3</sup>
- Helps repair demineralised enamel adjacent to the coating<sup>1</sup>

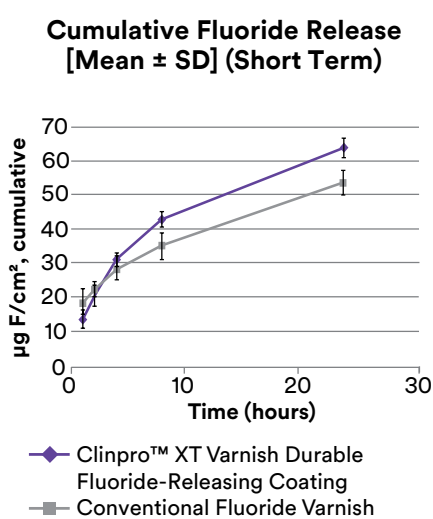




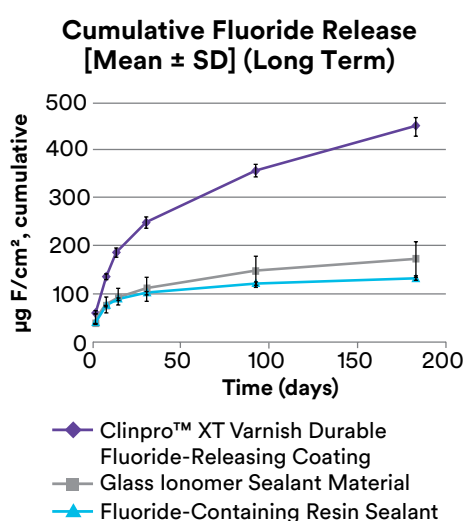
# Immediate relief

## Clinpro XT Varnish Durable Fluoride-Releasing Coating contains fluoride and is “recharged” by fluoride toothpaste

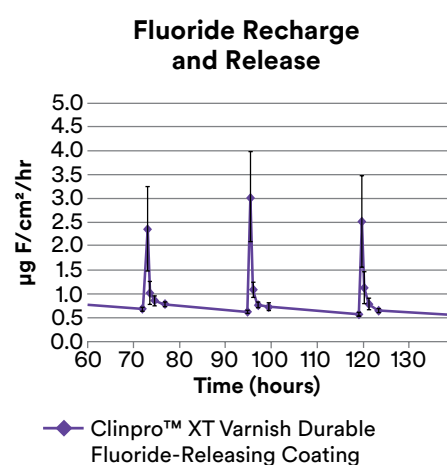
Clinpro XT Varnish Durable Fluoride-Releasing Coating is a resin-modified glass ionomer material that releases fluoride, calcium and phosphate. This makes it unique versus other in-office desensitizers. In the first 24 hours, XT Varnish releases more fluoride than a conventional fluoride varnish. Plus, XT Varnish is recharged every time the patient brushes with fluoride toothpaste. Your patients not only get the protection of a physical barrier, they get the benefit of long-term fluoride delivery.



In vitro testing shows Clinpro XT Varnish Durable Fluoride-Releasing Coating releases more fluoride over 24 hours than a conventional varnish.



In vitro testing shows Clinpro XT Varnish Durable Fluoride-Releasing Coating releases more fluoride over 6 months than other coatings.



In vitro testing shows Clinpro XT Varnish Durable Fluoride-Releasing Coating is recharged by brushing with fluoride toothpaste.

Source: 3M internal data

## The Complete Solution – check out the differences

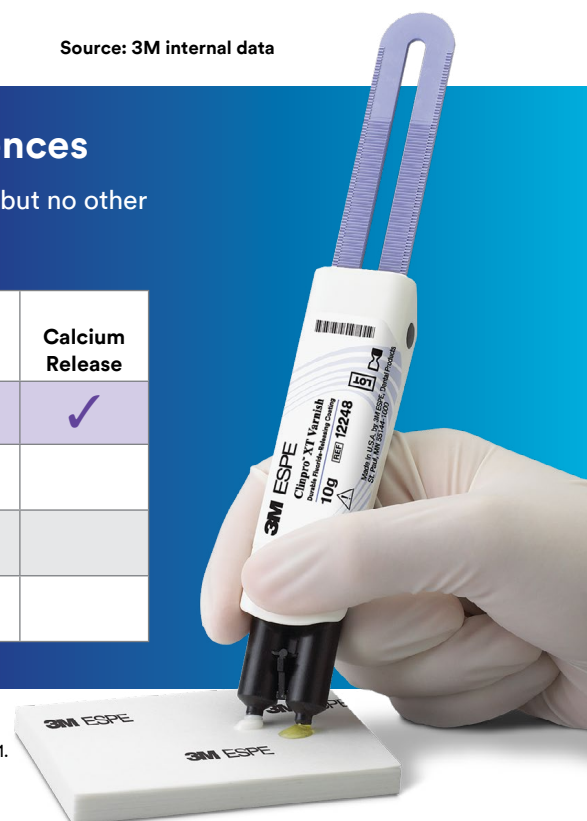
Existing dentinal hypersensitivity relief products offer multiple benefits, but no other product offers all the advantages of XT Varnish.

|  | Immediate Sensitivity Relief | Long-Term Coating | Moisture Tolerant | Fluoride Release | Calcium Release |
|--|------------------------------|-------------------|-------------------|------------------|-----------------|
| Clinpro XT Varnish Durable Fluoride-Releasing Coating      | ✓                            | ✓                 | ✓                 | ✓                | ✓               |
| Glutaraldehyde-based Desensitizers (e.g. Gluma™, Calm-it®) | ✓                            | ✓                 |                   |                  |                 |
| Resin-based Desensitizers (e.g. Seal & Protect™)           | ✓                            | ✓                 |                   |                  |                 |
| Conventional Fluoride Varnishes (e.g. Duraphat®)           | ✓                            |                   | ✓                 | ✓                |                 |

1. 3M internal data.

2. Rusin et al. (2008). Dentin Permeability of a New Protective Coating Material. J. Dent. Res. 87 (Spec Iss A): #1041.

3. Rusin et al. (2008). Demineralization Protection of a New Protective Coating. J. Dent. Res. 87 (Spec Iss B): #627.



# Clinpro™ XT Varnish Durable Fluoride-Releasing Coating is easy to use and does not require the use of a rubber dam

## Clinpro™ XT Varnish Durable Fluoride-Releasing Coating Exposed Root Surface Sensitivity Application



1. Clean the tooth surface



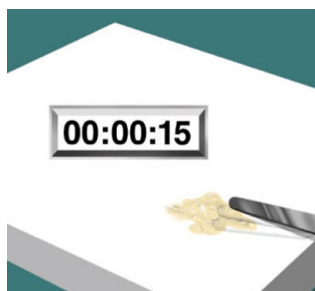
2. Rinse with water



3. Remove excess, pooled water



4. Dispense onto mixing pad



5. Mix for 15 seconds (2.5-minutes working time)



6. Apply thin layer to tooth surface



7. Light cure for 20 seconds



8. Wipe the coating with a moist cotton applicator

## Ordering Information



| Item # | Product Description  |
|--------|--|
| 12248  | Clinpro™ XT Varnish Durable Fluoride-Releasing Coating<br>1 - 10g Clicker™ Dispenser |

To learn more about using XT Varnish for protecting enamel surfaces and for patients with orthodontic brackets, visit

**3M.com.au/PreventiveCare**



**3M Australia Pty Limited**  
Building A, 1 Rivett Rd  
North Ryde, NSW 2113  
Ph: 1300 363 454  
www.3M.com.au

**3M New Zealand Limited**  
94 Apollo Drive  
Rosedale, Auckland 0632  
Ph: 0800 80 81 82  
www.3M.co.nz

3M, 3M Science, Applied to Life., ESPE and Clicker are trademarks of 3M. Printed in Australia. © 3M 2020. All rights reserved. Please recycle. AV011477450.