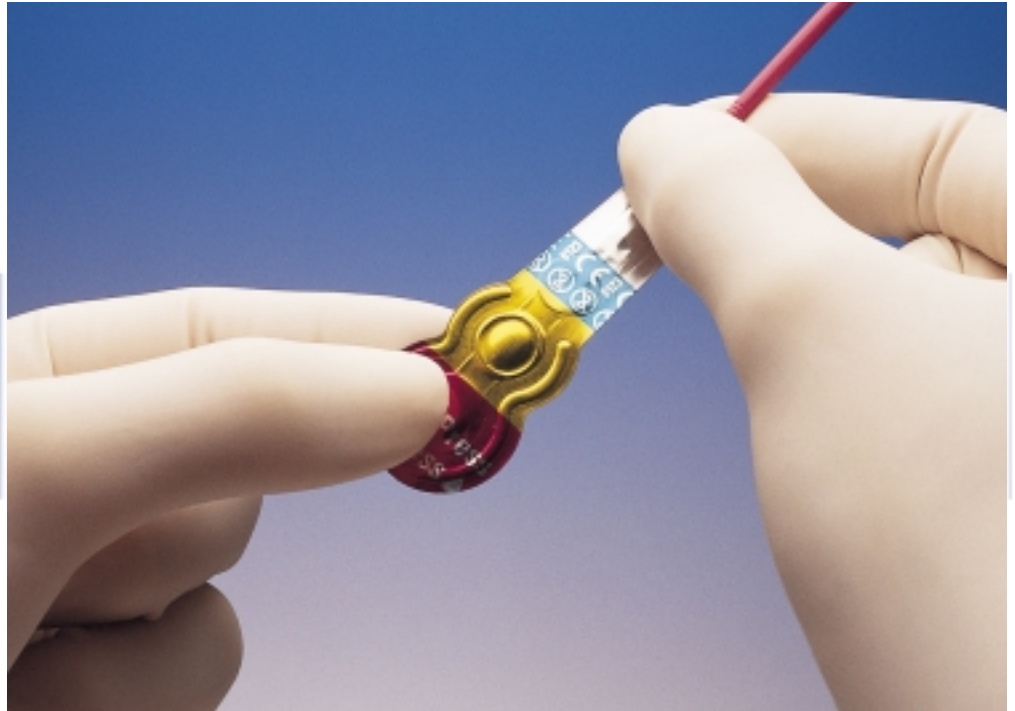


Adper™ Prompt™ L-Pop™ Self-Etch Adhesive

Now with easier activation and improved chemistry for higher performance.



- Easier to activate
- New and improved chemistry
- Improved dentin bond strength
- Higher viscosity for more uniform hybrid layer
- Very low incidence of post-operative sensitivity
- Innovative, disposable L-Pop™ delivery system from 3M ESPE
- Fast, easy and effective

The only one-step, unit-dose, self-etch adhesive available today.

The innovators at 3M ESPE have taken the only one-step, unit-dose, self-etch adhesive available today and improved it to better meet your bonding needs. 3M™ ESPE™ Adper™ Prompt™ L-Pop™ Self-Etch Adhesive offers easier activation for a more consistent, reliable mix and improved chemistry for better dentin bond strength. It also provides an aggressive enamel etch, and a higher viscosity that allows for a more uniform, consistent layer. Plus, it's self-etching to reduce post-operative sensitivity.

Best of all, you can count on 3M ESPE's award-winning, single-patient L-Pop™ delivery system to be fast and convenient, allowing you to etch, prime and bond in a single step—all in seconds.

Easy to Use

- Easier to activate for a more consistent, reliable mix
- New indentation makes it easy to see that material has moved from one chamber to the next
- Allows you to etch, prime and bond in a single step — all in seconds
- Innovative and convenient unit-dose L-Pop delivery
- Cures with any light source — halogen, laser, plasma or LED
- Extra-fine brush is available for small preparations and hard-to-reach areas of the mouth

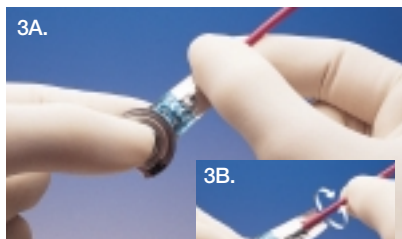
Easier to activate. The L-Pop delivery system allows for easier flow of material from one chamber to the next. When the material moves from the red chamber to the yellow chamber, the indentation in the yellow chamber pops up to show that the material has properly transferred.



1. Press



2. Fold



3A. Press

3B. Spin or churn applicator to mix adhesive



4. Apply*

Rub on prepared tooth for 15 seconds. Dry. If surface does not appear smooth and glossy, reapply adhesive and dry. Repeat as necessary. Light cure for 10 seconds.

*The adhesive's subtle yellow tint acts as a visual cue that the product has been activated.

Reduced Sensitivity

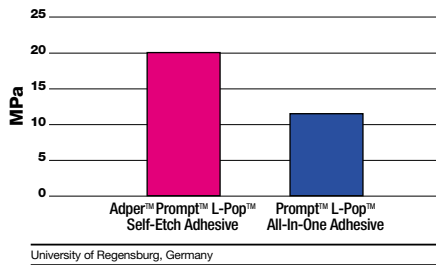
- Self-etching for very low incidence of post-operative sensitivity
- Improved viscosity creates a more uniform, consistent layer to reduce post-operative sensitivity
- Self-etching eliminates need to use a "moist" bonding technique, reducing technique sensitivity associated with many one-bottle adhesives

In a global clinical evaluation of new Adper Prompt L-Pop self-etch adhesive, only 3 out of over 1,400 restorations were reported to exhibit post-operative sensitivity. This confirms that using Adper Prompt L-Pop adhesive results in very low incidence of patient sensitivity.

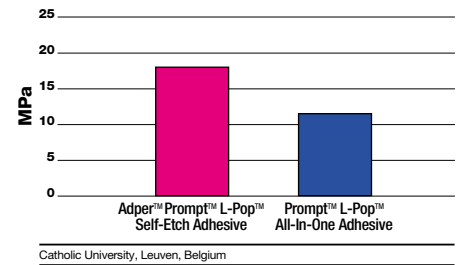
Improved Performance

- New and improved chemistry for better performance
- Improved dentin bond strengths
- More aggressive enamel etch than Clearfil™ SE Bond Adhesive
- Higher viscosity for a more consistent hybrid layer
- Easier to create a uniform, shiny surface

Dentin Shear Bond Strength

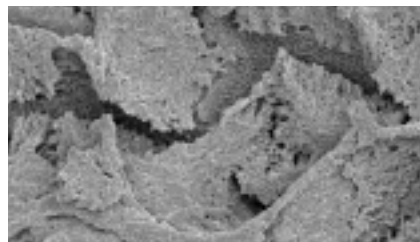


Dentin Microtensile Bond Strength

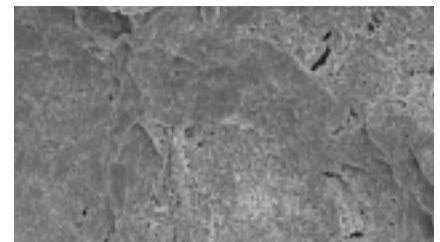


Adper Prompt L-Pop self-etch adhesive offers new and improved chemistry for better dentin bond strengths compared to the original Prompt™ L-Pop™ All-In-One Adhesive.

Etch Patterns on Prepared Enamel

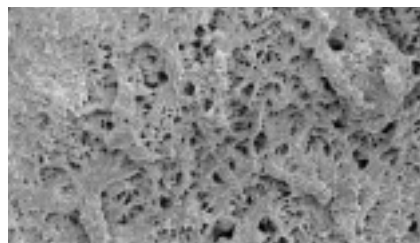


Adper™ Prompt™ L-Pop™ Self-Etch Adhesive



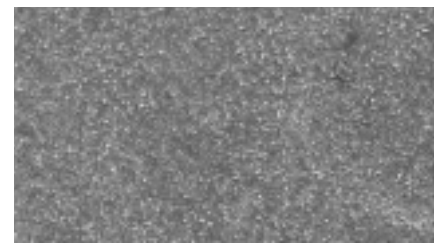
Clearfil™ SE Bond Adhesive

Etch Patterns on Unprepared Enamel



Adper™ Prompt™ L-Pop™ Self-Etch Adhesive

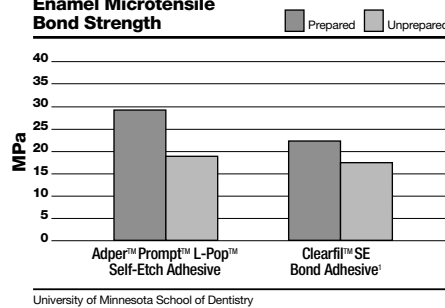
Source: University of Minnesota School of Dentistry



Clearfil™ SE Bond Adhesive¹

Adper Prompt L-Pop self-etch adhesive provides a more aggressive etch than Clearfil SE Bond adhesive on both prepared and unprepared enamel. An aggressive etch pattern promotes high bond strength.

Enamel Microtensile Bond Strength



An independent *in vitro* study compared the bond strength of Adper Prompt L-Pop self-etch adhesive to Clearfil SE Bond adhesive on prepared and unprepared enamel. Adper Prompt L-Pop adhesive yielded a higher microtensile bond to prepared enamel than Clearfil SE Bond adhesive and an equivalent bond to unprepared enamel—proving its ability to provide an aggressive etch for high bond strengths.

¹With no separate acid etch. Manufacturer's instructions include a separate acid etch step for unprepared enamel.

Adper™ Prompt™ L-Pop™ Self-Etch Adhesive

Ordering Information



Adper™ Prompt™ L-Pop™ Self-Etch Adhesive

| Item Number | Product Information |
|-------------|---|
| 41923 | Adper Prompt L-Pop self-etch adhesive Mini Pack – 20 L-Pop Applicators with XS Brushes ¹ |
| 41925 | Adper Prompt L-Pop self-etch adhesive Refill Pack – 40 L-Pop Applicators ¹ |
| 41926 | Adper Prompt L-Pop self-etch adhesive Giant Pack – 100 L-Pop Applicators ¹ |
| 41927 | Adper Prompt L-Pop self-etch adhesive Bulk Pack – 200 L-Pop Applicators ¹ |
| 41928 | Adper Prompt L-Pop self-etch adhesive Economy Pack – 500 L-Pop Applicators ¹ |

¹MSDS available. Call 1-800-634-2249

Now Available in Vial Delivery

If you prefer, the adhesive is also available in a vial delivery system: 3M™ ESPE™ Adper™ Prompt™ Self-Etch Adhesive. This two-vial system is a one-step, self-etch adhesive that provides excellent bonds and is:

- Easy to use
- Offers bulk delivery
- Accommodates multiple restorations
- Easy to see that adhesive is properly mixed
- Self-etching to reduce post-operative sensitivity



Adper™ Prompt™ Self-Etch Adhesive

| Item Number | Product Information |
|-------------|---|
| 41930 | Adper Prompt self-etch adhesive ¹ Vial introductory kit contains: 6ml Liquid A ² (41933), 2ml Liquid B ² (41934), 50 Disposable Mixing Wells ² (3401), 50 Applicator Brushes (Red) ² (41929). |
| 41933 | Adper Prompt self-etch adhesive liquid A, 6ml ¹ |
| 41934 | Adper Prompt self-etch adhesive liquid B, 2ml ¹ |
| 41929 | Applicator brushes (Red) – 50 Refill Pack |
| 41904 | XS Applicator brushes (Yellow) – 50 Refill Pack |

¹MSDS available. Call 1-800-634-2249 ²Also available separately

Adper™ Dental Adhesives are a full line of products from 3M ESPE designed to meet all your bonding needs. Visit our Web site, or call our technical hotline to learn more about Adper dental adhesives.

Technical Hotline: 1-800-634-2249 www.3MESPE.com

3M ESPE

Dental Products

3M Center
Building 275-2SE-03
St. Paul, MN 55144-1000
USA

3M Canada

Post Office Box 5757
London, Ontario N6A 4T1
Canada
1-800-265-1840 ext. 6229



10% post-consumer
waste paper

Printed in USA
© 3M ESPE 2002

3M, ESPE, Adper, Prompt and L-Pop are trademarks of 3M or 3M ESPE AG. Clearfil is a trademark of Kuraray Co., Ltd.

70-2009-3435-7