

**3M**

**Filtek™**

**Universal Restorative**

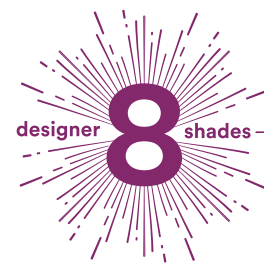
Your restorations.  
Your composite.  
Your day.

**Universally  
simpler.**



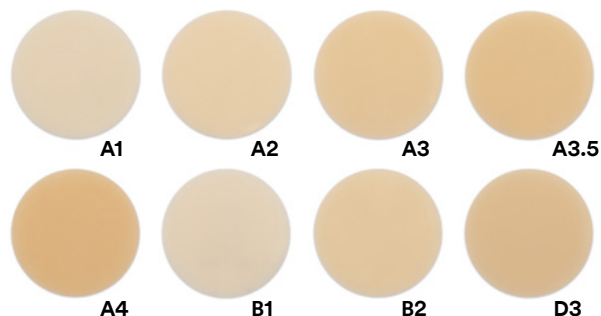
**3M™ Filtek™  
Universal Restorative**

# This is for the passionate, who embrace a busy day.



## Just 8 designer shades

3M NaturalMatch technology lets you match most of your patients' dentition with a time-saving, 8-shade inventory.



PLUS



**1 Shade.  
1 Universal opacity.  
It doesn't get  
any simpler.**

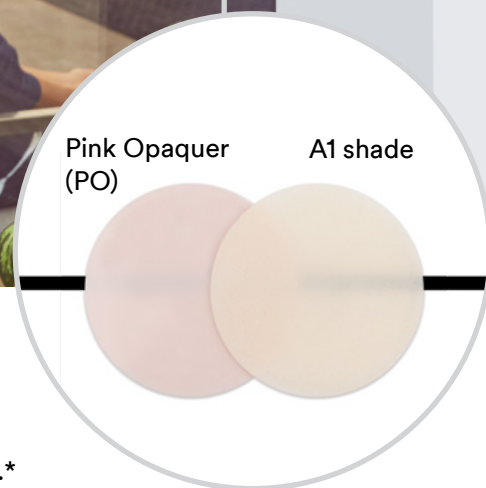
Efficiency is key to navigating a tight schedule. That's one reason dentists use a single-shade restoration for about 80% of their cases.\*

Knowing the positive impact it would have on your practice if those restorations were easier, we created 3M™ Filtek™ Universal Restorative.

\*3M data on file.

It starts with simplifying shade selection. Just 8 designer shades plus an Extra White (XW) cover the 19 VITA classical and bleach shades.\* Plus, the shades have a universal opacity that meets most clinical needs.

- **NaturalMatch technology** (made up of nanofillers, proprietary low-stress monomers and pigments) enables one-shade aesthetics to blend more naturally with dentition.
- **Fluorescent pigments** enhance the lifelike appearance.
- **3M filler technology** allows for increased radiopacity.



Now you can keep dark areas from diminishing your aesthetic results. 3M's first Pink Opaquer effectively masks metal and stained dentition.



# This is for the devoted ... who meet each day head-on.

Most days are nonstop – you barely have time to grab a cup of coffee and review your cases scheduled for the day. And one thing you can count on, is that your day will not go as planned.

What if there were a restorative that could help you take charge of your day? What if creating strong, highly aesthetic restorations could be much simpler, and faster?

What if that simplicity meant you and your team could feel less stressed ... so you'd have more energy for enjoying your life?

You're about to discover how changing just one thing – your composite – can change everything!



# It's for patients who take pride in a beautiful smile ...



## Extra White restorations for patients who bleach

The tooth-whitening business continues to expand,<sup>1</sup> but dentists tell us it's difficult to find composites that can match the whitest teeth. We answered with an XW, to help you meet patient expectations.



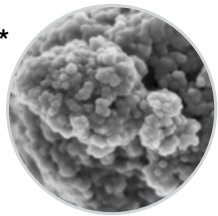
1. Expected size of the global teeth whitening products market by 2024. Hexa Research. (2017, August 17). *Teeth Whitening Products Market Size Worth USD 7.40 Billion By 2024* [Press release]. Retrieved from [www.hexaresearch.com/press-release/global-teeth-whitening-products-market](http://www.hexaresearch.com/press-release/global-teeth-whitening-products-market).

## Shade blending that passes the "friend test"

With the unique shade-matching effect of 3M NaturalMatch technology, even anterior work can be virtually unnoticeable – even by close friends. The material's **universal opacity** helps it blend more invisibly with surrounding dentition.

## A glamorous gloss that lasts

The initial polish of any restorative can be impressive, but many dull over time. Thanks to 3M's patented TRUE nanofiller technology, Filtek Universal restorations polish quickly to a high gloss, and polish can even be improved with toothbrush abrasion.\*



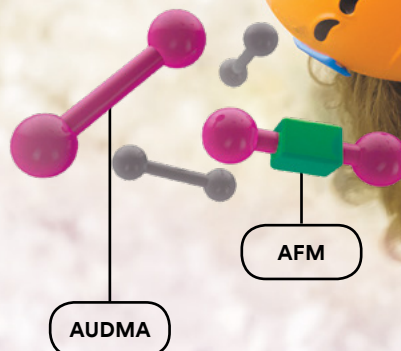
100K magnification of nanocluster. SEM photo courtesy of Dr. J. Perdigão, University of Minnesota.

\*3M data on file.

# and for the bold who say, Yes! to life.

## Dual "endurance" technologies

Chewing, brushing, grinding, gritting ... restorations get quite a workout. We raised the bar on durability by combining two of 3M's top technologies. **Low-stress monomer technologies** pioneered in our bulk-fill composites, help protect against shrinkage and shrinkage stress. **3M's TRUE nanotechnology** provides high strength and excellent\* wear resistance.



\*3M data on file.





## Even the capsule is designed to make restorations easier.

Our capsule has a shear thinning design which allows the material to extrude like a flowable – then become more viscous for shaping. The tip is longer (8 mm), and the opening flexes during placement – enabling good adaptation in hard to reach areas.



# This is 3M™ Filtek™ Universal Restorative.

It's for all of you who want  
your restorations,  
your composite,  
your day,  
to be universally simpler.



## Key features

- **Simplified shade selection** – just 8 designer shades to cover most of your patients
- **Universal opacity** to blend more naturally
- **Extra White (XW)** for matching bleached teeth
- **Fluorescent pigments** to give restorations a lifelike appearance
- **Pink Opaquer** to easily mask dark areas
- **3M's nanotechnology** for easy polish that lasts
- **Proprietary low-stress monomers** for fracture resistance
- **Increased radiopacity** for easier identification at recall
- **Capsule warming** – 3M™ Filtek™ Universal Restorative capsules can be safely warmed.<sup>^</sup>

<sup>^</sup>See Instructions for Use.

## Indications

- Direct anterior and posterior restorations (including occlusal surfaces)
- Core buildups
- Splinting
- Indirect restorations including inlays, onlays and veneers

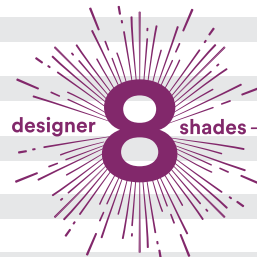


## Ordering Information

### 3M™ Filtek™ Universal Restorative

Item #	Product Information
6550CK	<b>3M™ Filtek™ Universal Restorative Essential Kit, Capsules</b> Kit includes: 80 x 0.2 g capsules: 20 each of A1, A2, A3, A3.5; 10 x 0.2 g capsules of PO; Technique Guide; Instructions for Use.
6555SK	<b>3M™ Filtek™ Universal Restorative Essential Kit, Syringe</b> Kit includes: 5 x 4 g syringes: 1 each of A1, A2, A3, A3.5 and PO; Technique Guide; Instructions for Use.

Refill	Item #	Item #
<b>SHADES</b>	<b>SYRINGE</b>	<b>CAPSULE</b>
A1	6555A1	6550A1
A2	6555A2	6550A2
A3	6555A3	6550A3
A3.5	6555A3.5	6550A3.5
A4	6555A4	6550A4
B1	6555B1	6550B1
B2	6555B2	6550B2
D3	6555D3	6550D3
XW – Extra White	6555XW	6550XW
PO – Pink Opaquer	6555PO	-
SHADE REFILLS	CAPSULES – includes 20 x 0.2 g capsules	SYRINGES – includes 1 x 4 g syringe
PINK OPAQUER (PO) REFILLS	-	SYRINGES – includes 1 x 4 g syringe



All refills include a Technique Guide and Instructions for Use.

**3M.com.au/FiltekUniversal**  
**3M.co.nz/FiltekUniversal**



### 3M Oral Care

**3M Australia Pty Limited**  
Building A, 1 Rivett Road  
North Ryde, NSW 2113  
Ph: 1300 363 454  
3M.com.au

**3M New Zealand Limited**  
94 Apollo Drive  
Rosedale, Auckland 0632  
Ph: 0800 808 182  
3M.co.nz



Find us on Facebook

\*3M data on file.  
3M and Filtek are trademarks of 3M.  
Printed in Australia. © 3M 2019.  
All rights reserved. AV011477229

