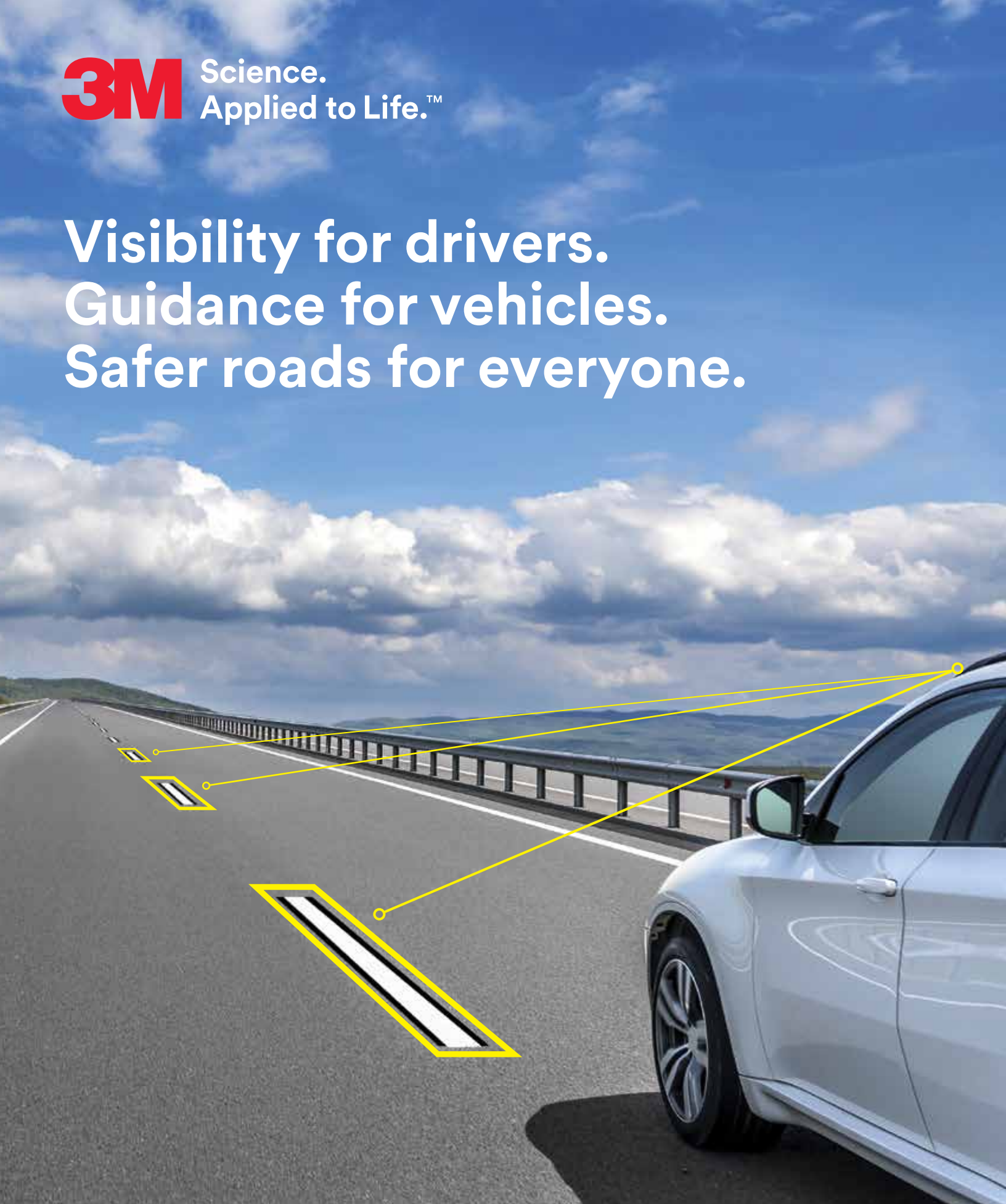


**3M** Science.  
Applied to Life.™

**Visibility for drivers.  
Guidance for vehicles.  
Safer roads for everyone.**





# Together, we can build the roads of tomorrow.

The way we drive is drastically changing. Cars and trucks are getting smarter and safer every day as they become increasingly automated. Will your roads be ready? 3M's retroreflective technology has raised the bar on visibility and durability in road markings for the modern world. We will continue to evolve with changing technology to help keep roads safe, day or night, wet or dry.

**Create a safer driving environment. High-contrast markings help enable the Advanced Driver Assistance Systems (ADAS) on vehicles today.**

Consistent contrast and brighter road markings help enable lane detection for human and automated drivers.



Help families get home safely.

**[3M.ca/RoadSafety](https://www.3m.ca/RoadSafety)**

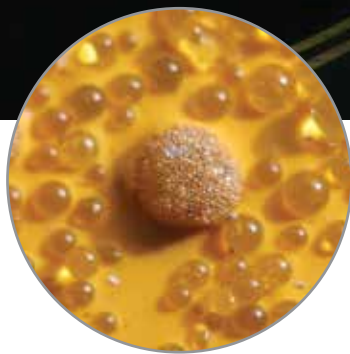


# Road markings to help safely guide vehicles with Advanced Driver Assistance Systems.

With high-index optics, microcrystalline ceramic beads, durable components and advanced adhesives, our road markings are designed to help make roadways more visible.

## All-weather elements — the most efficient optics for liquid-applied markings.

Provide visibility with 3M's all-weather pavement marking optical system in dry and wet weather conditions.



## Liquid Pavement Markings

Use 3M liquid pavement markings on roadways and highways for long lines, channelizing lines, gore markings and intersection markings. Our complete liquid pavement marking systems include all-weather elements to ensure optimum visibility in any climate. These easy-to-apply traffic safety markings feature durability you can rely on.



## Durable Pavement Marking Tape

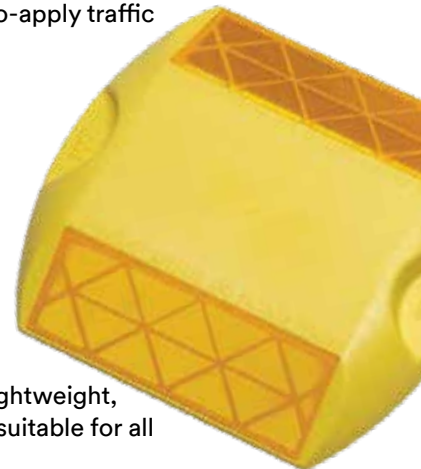
Get the durability, wet-reflectivity and high-contrast visibility you need to help make roads easier and safer to navigate. These preformed reflective tapes are for permanent-type applications such as lane and centre lines, edge lines, gore markings, crosswalks, stop bars, symbols and legends.



**3X**  
brighter  
than standard  
markings after  
15 months<sup>1</sup>

## Raised Pavement Markers

Raise your visibility. Durable and highly reflective, 3M raised pavement markers are used for longitudinal lines and gore markings on asphalt or concrete surfaces. These lightweight, impact-resistant markers are suitable for all weather conditions.



## Temporary Pavement Marking Tape

Choose the perfect solution for conditions that aren't. Improve safety by marking temporary work zone lanes with removable, highly reflective, all-weather 3M temporary pavement marking tapes.

<sup>1</sup>Assessment of the Durability of Wet Night Visible Pavement Markings: Wet Visibility Project Phase IV; Virginia Tech Transportation Institute

# Accelerating innovation to help make roads safer today and tomorrow.

Helps improve lane detection and traffic safety in some of the most extreme weather conditions. For more than 40 years, 3M has been a leading manufacturer and innovator of pavement markings—and we're just getting started. As new technology has emerged, our pavement markings have evolved. Machine-readable technology enhances detection of markings and works with automated vehicle sensors to detect lines outside the visible spectrum.



3M is leading the way with highly visible, camera-detectable markings to help connected, automated and autonomous vehicles navigate the roadways of the future.

We're here for you. Our customized training and technical assistance is always ready to help you by lowering lifecycle costs and streamlining maintenance. We've helped agencies all over the world meet their roadway safety and mobility objectives—and we can help you too. Together, we can help keep bringing families home safely.

**Keep moving forward at [3M.ca/PavementMarkings](https://www.3m.ca/PavementMarkings).**



3M Transportation Safety Division

3M Canada

P.O. Box 5757

London, Ontario N6A 4T1

1-800-3MHELPS

[3M.ca/PavementMarkings](https://www.3m.ca/PavementMarkings)

3M and 3M Science. Applied to Life. are trademarks of 3M.

Used under license in Canada. © 2018, 3M. All rights reserved.

1809-12949 E