

Flexi Authorized 3M™ Traffic Edition Software Update

What's new in the update?

- Traffic YELLOW is now available for 3M™ Diamond Grade™ DG³ Reflective Sheeting Series 4000 (“4000”).
- New media now available:
 - 3M™ Diamond Grade™ VIP Reflective Sheeting Series 3990 (“3990”)
 - 3M™ Engineer Grade Prismatic Reflective Sheeting Series 3430 (“3430”)
 - 3M™ Fluorescent Orange Prismatic Work Zone Sheeting Series 3924S (“3924”) for printing black only
- All Traffic Media types have been updated to version 3 (“v3”) to improve performance in printer.
- **Please note:** not all traffic colors can be achieved with all media types and the requirements of each class of media. The colors available with the updated presets, are shown below, in Table 1.

Table 1. Colors available for each media type using updated flexi presets with updated media files.

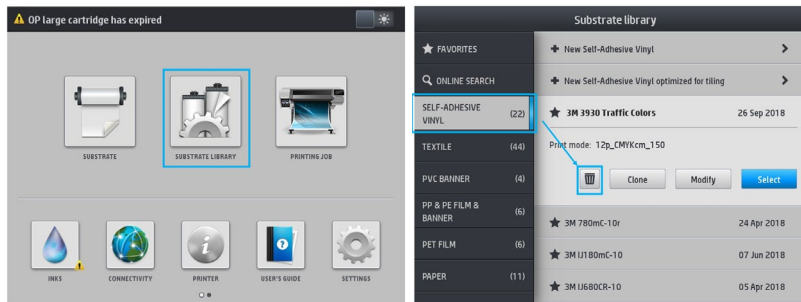
Updated Flexi Preset	Traffic BLACK	Traffic RED	Traffic GREEN	Traffic BLUE	Traffic BROWN	Traffic PURPLE	Traffic YELLOW
3M Traffic HP365/360 3924 Series ASTM v3	✓						
3M Traffic HP365/360 3430 Series ASTM v3	✓	✓	✓				
3M Traffic HP365/360 3930 Series ASTM v3	✓	✓	✓	✓	✓	✓	
3M Traffic HP365/360 3990 Series ASTM v3	✓	✓	✓	✓	✓	✓	
3M Traffic HP365/360 4000 Series ASTM v3	✓	✓	✓	✓	✓	✓	✓

Instructions to update Flexi Authorized 3M™ Traffic Edition Software:

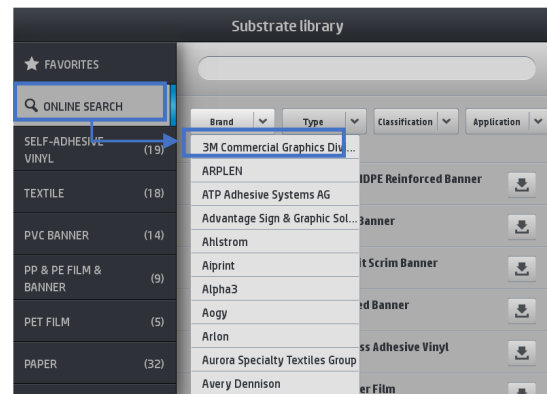
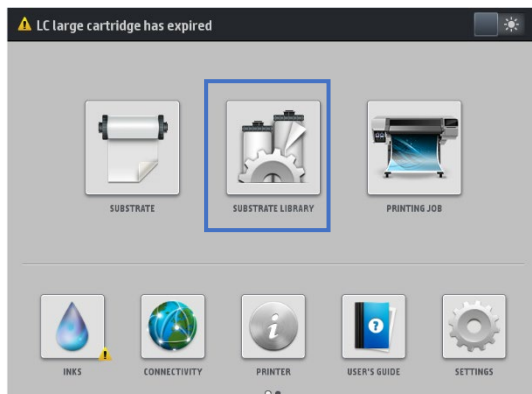
- a. After receiving notification for the update, download the software update
- b. Alternatively, you can log into your saicloud.com account and download the updated version
- c. Close software and run updater

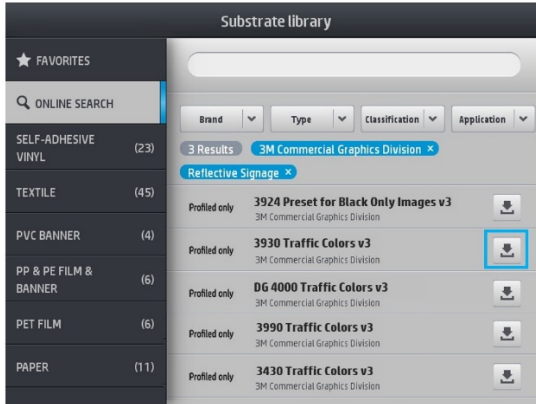
Instructions to update media files:

- d. Delete current media files (3M 3930 Traffic Colors and 3M 4000 Traffic Colors) using the LCD screen on your printer
 - i. Go to Substrate Library
 - ii. Locate current Media files (3M 3930 Traffic Colors and 3M 4000 Traffic Colors)
 - iii. Click the “bin” icon to erase media files



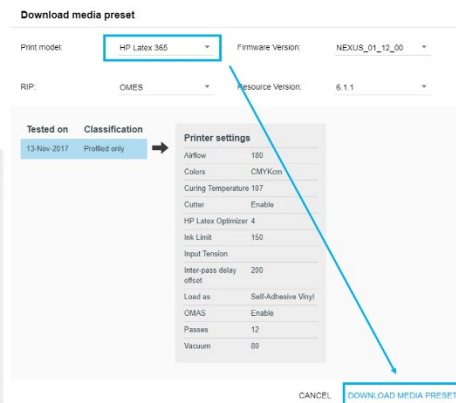
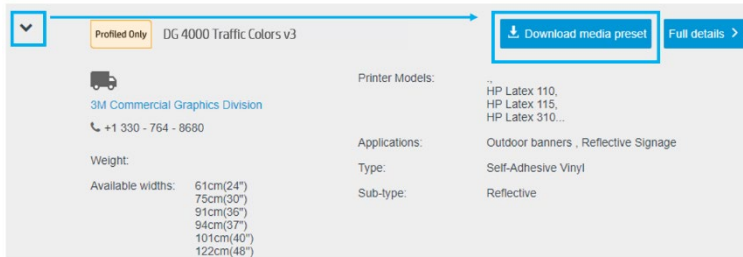
- e. Download and install new v3 media files (3M 3924 Traffic v3 for Black Only Images; 3M 3430 Traffic Colors v3; 3M 3930 Traffic Colors v3; 3M 3990 Traffic Colors v3; and 3M 4000 Traffic Colors v3)
 - i. Go to Substrate Library
 - ii. Go to Online Search
 - iii. Locate the desired media files. Media files can be filtered by Brand (3M Commercial Graphics) & Application (Reflective Signage).
 - iv. Select the **media preset profile to download** by clicking the **download icon**. Make sure profile names include “v3” at the end.

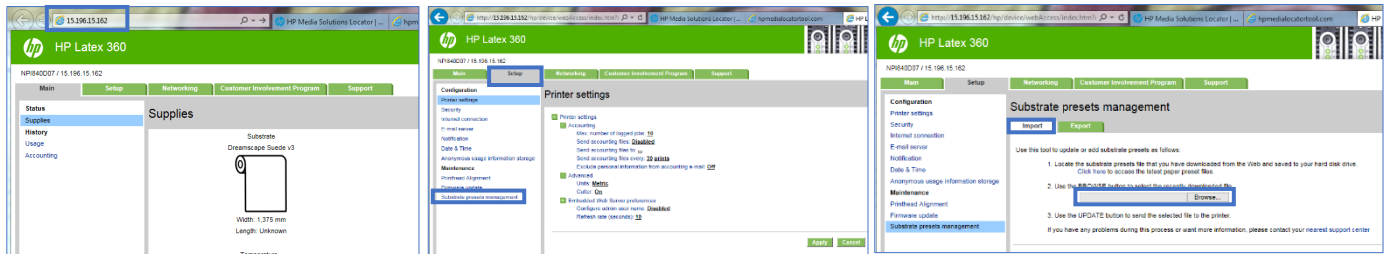




Alternatively, media files may be downloaded to your computer and installed through the Embedded Web Server (“EWS”).

- i. Open a web browser and visit the HP Media locator page: <https://www.printos.com/ml/#/medialocator/latex>
- ii. Locate the desired media files. Media files may be filtered by Brand (3M Commercial Graphics) & Application (Reflective Signage).
- iii. Download the media presets **from the media locator**. Make sure the profile names include “v3” at the end.
- iv. Install the media presets onto the printer using the EWS.





Open a web browser window and enter the **IP address** of the printer to which the profile is to be installed.

On the top menu, select the **setup** tab. On the vertical menu, select **Substrate presets management**.

Select **Import** and, using the **browse button, navigate to and select the media preset** (a .oms file) that was previously downloaded from the media locator webpage.

- f. Open software, then open Default Job Properties. Go to the printer option tab to have the software sync with the printer.