



Fall Protection



Core Range Fall Protection

Height Safety | Confined Space | Industrial Rescue

#3MScienceOfSafety

We help you unravel the standards and regulations.

Fall Arrest Devices

From rooftops, communication towers, mining and more, we offer a full suite of information and versatile fall protection solutions to help protect your workforce. With an extensive range of products, third party certified to Australian and global standards, including the updated AS/NZS 1891.1:2020, AS 1891.3:2020 and 1:2021 and AS 1891.5:2020 standards.

Leading Edge Applications



As common as they are hazardous, leading edges—the unprotected side and edge of a floor, roof or form work for a floor—require specialized fall protection designed for the task. That's why we've developed a universal orange icon that we placed all of our leading edge 3M Fall Protection products, such as our self-retracting Lifelines, DBI-SALA Nano-Lok LE and Smart Lock LE and PROTECTA LE plus DBI-SALA Cut Resistant lanyards.



Safety as basic as the ABCs!

A typical Personal Fall Arrest System (PFAS) incorporates three components, often described as the ABC's of fall protection. The anchorage/anchorage connector, body support and connecting device—when used together—form a complete system for maximum worker protection. But don't forget the other important components of a comprehensive fall protection program: descent and rescue, education and fall protection for tools.

Anchorage provide a secure point of attachment. Anchorage connectors vary by industry, job, type of installation and structure. They must be able to support the intended loads and provide a sufficient factor of safety for fall arrest.

Body support harnesses help distribute fall forces over the upper thighs, pelvis, chest and shoulders. They provide a connection point on the worker for the personal fall arrest system.

Connectors such as shock-absorbing lanyards or self-retracting lifelines connect a worker's harness to the anchorage.

Rescue and Descent devices are used to raise or lower a worker to safety or retrieve them from a confined space.

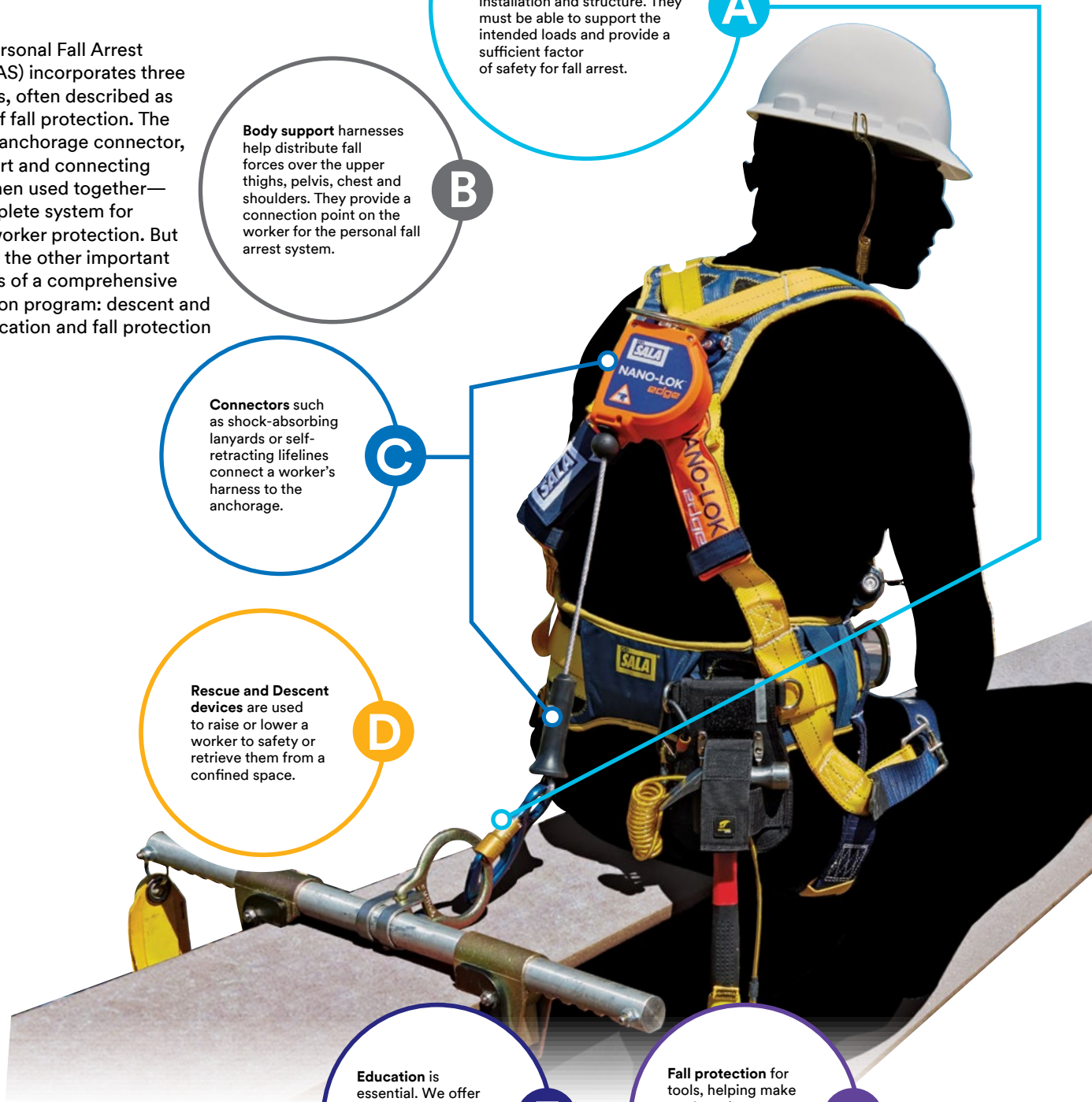
D

Education is essential. We offer a variety of training and consultative services to fit your needs.

E

Fall protection for tools, helping make work environments safer and more productive by reducing dropped object incidents.

F





The sky's the limit.

“Dedicated To Bringing Every Worker At Height Home Safely.”

3M Fall Protection, a part of 3M's Personal Safety Division is dedicated to fall protection and rescue. Our focus is razor sharp, it continually drives us to design and manufacture the safest possible height safety gear. We understand the industries we serve and listen to the workers in the field. We employ the best engineers to create innovative solutions and patent the products that keep workers safe at heights around the world. 3M Fall Protection has the best quality and largest range of fall protection products in the industry. But we're more than a product company. We take an innovative approach in bringing our products to the field.

We have created international partnerships and a vast network of authorised distributors, certified installers and service centres. Our manufacturing sites hold ISO 9001 quality accreditation, as well as ISO 14001 environment and AS4801 Health & Safety accreditation. 3M Fall Protection is one of the world's leading manufacturers of fall protection and rescue equipment, with decades of experience and a legacy of innovation. Look for complete solutions in our extensive range of DBI-SALA® and PROTECTA® brands.

Fall Protection Demo Trailer

Experience safety, comfort and performance. Backed by Science.

Our demo trailers are ready to go, scan the QR code to learn more about our 3M complimentary demonstrations.





ID 1420992

Anchorage

3M offers a selection of temporary and permanent anchorage connectors. Our safety anchors include steel anchors, concrete anchors, roof anchors and specialty anchors like our vacuum mount for smooth surface environments. We manufacture anchor systems to fit your unique applications.

DBI-SALA Anchorages

3M™ DBI-SALA® Structural Mount Anchors



SAP ID	Legacy ID	Model #	Description	MBS
7100188830	70007440707	2101630	D-ring with anchorage plate	22.2 kN
7100314867	70007900361	7234034	Single point anchor	22.2 kN

3M™ DBI-SALA® Concrete Mount Anchors



SAP ID	Legacy ID	Model #	Description	MBS
7100188833	70007440699	2101004	Concrete detent anchor	22.2 kN
7100188834	70007441093	2104560	Bolt on, with swivel D-ring	22.2 kN
7012818267	70007451167	2101000	Concrete Socket and Cap to suit Concrete Detent Anchor	N/A

3M™ DBI-SALA® Roof Mount Anchors



SAP ID	Legacy ID	Model #	Description	MBS	Certified
7012888628	AT010621947	2101734	Anchor side truss mount	15 kN	✓
7012877389	AT010621954	2101735	Anchor top purlin mount	15 kN	✓

3M™ DBI-SALA® Beam Anchors



SAP ID	Legacy ID	Model #	Description	MBS	Certified
7100188831	70007440806	2103143	Beam trolley, installs onto 76mm - 203mm wide I-beam flange up to 17mm thick	22.2 kN	
7100188829	70007442091	2108406	Fixed beam anchor, installs onto 63mm - 305mm wide I-beam flange up to 38mm	22.2 kN	
7100243117	70804490921	2104711	Sliding Beam Anchor, Small, Adjustable 89mm - 355mm	15 kN	✓
7100313951	70804490939	2104716	Sliding Beam Anchor, Large, Adjustable 305mm - 762mm	15 kN	✓

3M™ DBI-SALA® Tie-Off Anchor Strap Adaptor with Interlocking Rings

SAP ID	Legacy ID	Model #	Description	Width	MBS	Certified
7012874618	70007928834	E849-005	0.5 m	75 mm	22.2 kN	✓
7012881781	70007925731	E849-010	1 m	75 mm	22.2 kN	✓
7012867545	70007925566	E849-015	1.5 m	75 mm	22.2 kN	✓
7012888084	70007925574	E849-020	2 m	75 mm	22.2 kN	✓
7012868705		E849-030	3 m	75 mm	22.2 kN	✓
7012886075		E849-050	5 m	75 mm	22.2 kN	✓



3M™ DBI-SALA® Round Anchor Strap

SAP ID	Legacy ID	Model #	Width	Length	MBS	Certified
7012698175	AT010622036	1003583	25 mm	1.2m	22.2 kN	✓
7012891440	AT010622044	1003584	25 mm	1.5m	22.2 kN	✓
7012698176	AT010622051	1003585	25 mm	2.0m	22.2 kN	✓
7012878095	AT010622077	1003587	25 mm	3.0m	22.2 kN	✓
7012888695		1003581	25 mm	0.6m	22.2 kN	✓



MBS = Minimum Breaking Strength
Models marked 'Certified' are to AS/NZS 5532:2013 standard

3M™ DBI-SALA® Specialty Anchors

3M™ DBI-SALA® First-Man-Up™ Systems

SAP ID	Legacy ID	Model #	Description
7012818318	70007441051	2104530	1.8 - 3.6 m working length
7012818319	70007441069	2104531	2.4 - 4.8 m working length



3M™ DBI-SALA® Door Jamb Anchor

SAP ID	Legacy ID	Model #	Description	MBS
7100188835	70007439592	2100080	Door/Window Jamb Anchor	22.2 kN



3M™ DBI-SALA® Vacuum Anchor System

SAP ID	Legacy ID	Model #	Description
7100226831	70007452900	2200108	Mobi Lok self contained aviation compliant vacuum anchor.



3M™ DBI-SALA® Horizontal Lifeline Systems

3M™ DBI-SALA® Sayflin™ Temporary Lifeline Rope Systems

Up to 2 users



SAP ID	Legacy ID	Model #	Length
7100220302	70007490371	7600507	20 m
7100188822	70007490405	7600510	30 m

3M™ DBI-SALA® EZ-Line™ Retractable Horizontal Lifeline Wire Cable System

Up to 6 users (2 per span)

Note: DBI-SALA® Engineered permanent horizontal lifeline systems and Sayflin™ post and base system also available.



SAP ID	Legacy ID	Model #	Length
7100231231	70007488128	7605061	18 m

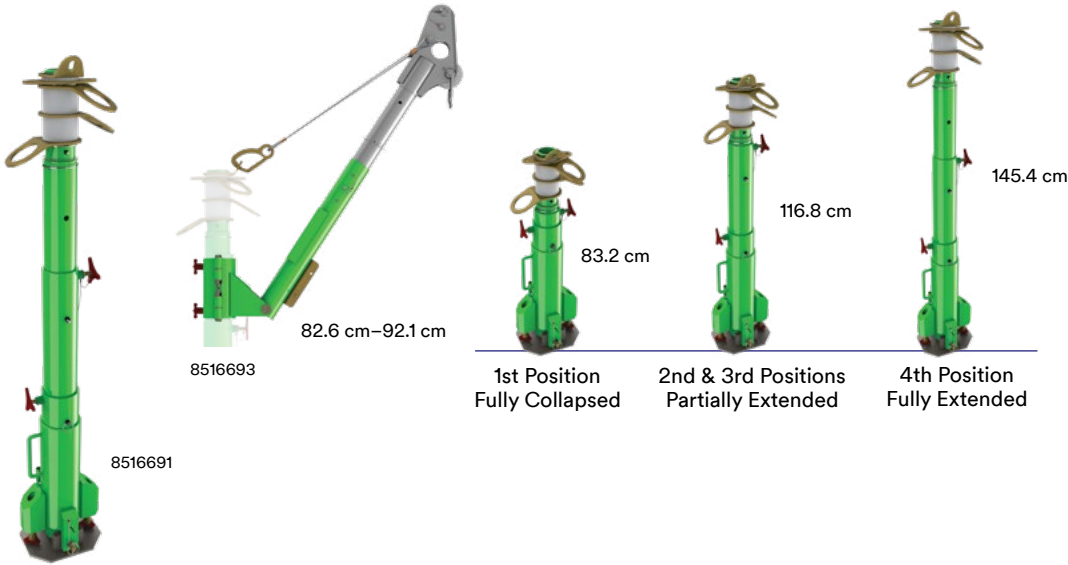
3M™ DBI-SALA® Portable Fall Arrest System

Portable Fall Arrest System

- Three independent swiveling tie-off points.
- 360 degrees of protection for three workers.
- Telescopic design;
- 83.2 cm–116.8 cm–145.4 cm
- Lightweight and durable aluminum construction.

Rescue Davit Arm for Portable Fall Arrest Post

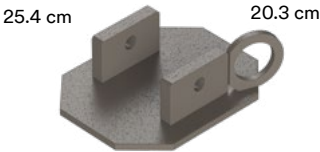
The optional rescue davit arm assembles easily to our portable fall arrest post, providing simple and efficient rescue and material handling capabilities.



SAP ID	Legacy ID	Model #	Description
7100188842	70007495354	8516691	Advanced Portable Fall Arrest Post
7100188843	70007495370	8516693	Rescue Davit Arm for Portable Fall Arrest Post

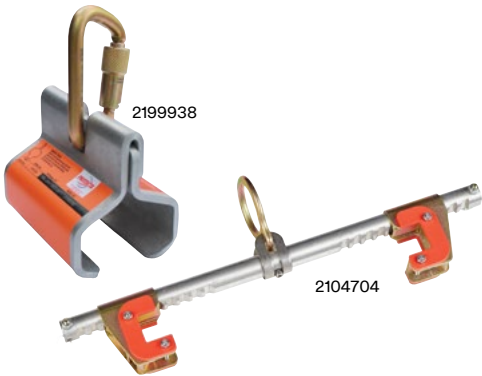
Portable Fall Arrest System Bases & Accessories

SAP ID	Legacy ID	Model #	Description
7100157154	70007495594	8517412	Bare Steel Uni-Anchor with Tie Off Anchor



3M™ Protecta® Anchorage Devices

SAP ID	Legacy ID	Model #	Description	MBS	Minimum Width	Maximum Width	Certified
7100246255	70007649455	2199938	Sliding Rail Anchor	16 kN	70 mm	82 mm	
7100313950	70804486242	2104704	Protecta® Sliding Beam Anchor	15 kN	89 mm	356 mm	✓



3M™ Protecta® Temporary Horizontal Lifeline

Up to 2 users

SAP ID	Legacy ID	Model #	Description
7100232036	70071760188	1200101	Web HLL E6 18 m Pro with Anchor Strap



MBS = Minimum Breaking Strength
Models marked 'Certified' are to AS/NZS 5532 for a single user freefall arrest 15 kN.



Body Harnesses

Safety harnesses provide comfort and confidence, and directly affects the user's productivity, as well as giving them flexibility to do what needs to be done on the job site. 3M has the latest in full body harness protection. DBI-SALA® and PROTECTA® harnesses - ExoFit NEX™, Delta™, P200 and P50 - have earned a reputation as top full body harnesses for maximum comfort, freedom of movement and ease-of-use.



3M™ DBI-SALA®
ExoFit NEX™

1

Premium all day
comfort harness

- Revolver torso adjusters maintain fit and lock excess webbing in place
- Lightweight aluminium D-rings
- Quick-connecting buckles enhance productivity
- Standup dorsal D-ring simplifies connections

Select
your
work:

Construction	1	2	3	4
Tower Climbing		2	3	4
Riggers		2	3	4
Crossover		2	3	4
Wind Energy		2		



3M™ DBI-SALA®
Delta™ Comfort

2

Light weight comfort harness

- Spring adjusters maintain fit and lock excess webbing in place
- Vented shoulder, back and leg padding helps keep wearer cool
- Sewn-in dorsal pad holds personal SRLs and helps eliminate slippage
- Visual indicators alert wearer if harness has been impact-loaded

Mining		2	3	4
Oil & Gas		2		4
Rope Access/Rescue		2		
Positioning		2	3	4
Scaffolding	1	2	3	4

Body Harnesses



3M™ DBI-SALA® Delta™

3

The every day workers harness

- Spring adjusters maintain fit and lock excess webbing in place
- Tangle-free design falls into place when donned
- Quick-connect buckles enhance productivity
- Standup dorsal D-ring simplifies connections



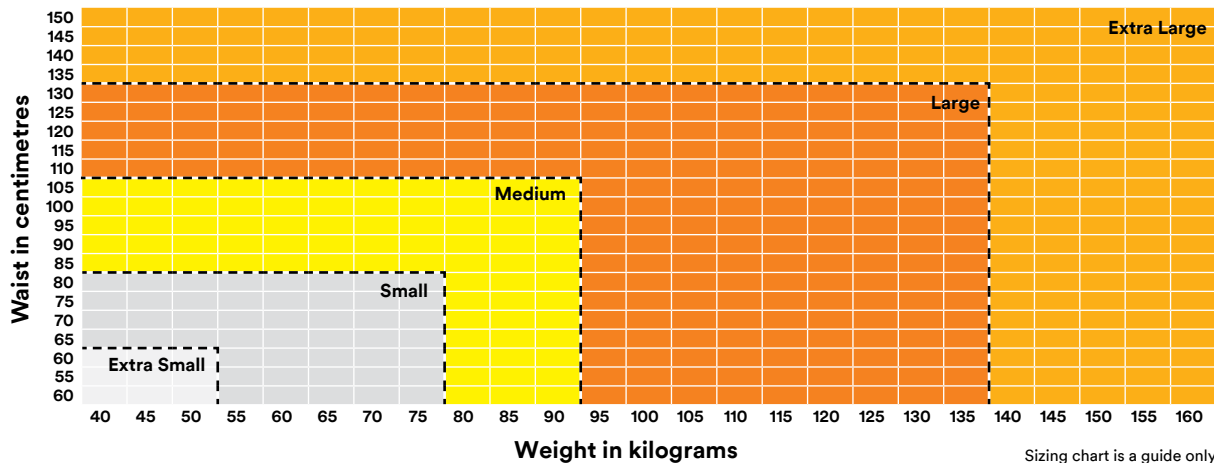
3M™ Protecta™ P200 Full-Body Harnesses

4

Reliable, comfortable and convenient

- Integrated Suspension Relief Straps to provide an adjustable, continuous loop for post fall, offering suspension relief.
- Lanyard Keepers provide easy parking of snap hooks or karabiners.
- Conveniently placed front fall arrest D-ring helps you stay balanced and centred.
- Rip-stitch indicators allow you to inspect the harness at a glance, for prior damaging impact loads.

Select your size:



Sizing chart is a guide only

3M™ DBI-SALA® ExoFit NEX™ Full-Body Harnesses

The ultimate full-body comfort harnesses.

ExoFit NEX™ harnesses are the most advanced harnesses in the industry. They're the culmination of our experience with ExoFit™ and ExoFit™ XP, ongoing research and the incorporation of new materials and innovative features.

Features and Benefits:

Stand-Up Dorsal D-ring

- Patented spring-loaded design automatically stands-up, ensuring fast, easy and safe connections to your fall arrest system.

Covered Labels and RFID equipped**

- A press stud cover protects harness labels.

Impact Indicator

- Rip-stitch indicators allow you to inspect the harness at a glance, for prior damaging impact loads.

Revolver torso adjuster**

- Simple and fast adjustments that eliminate loose ends and lock into place, preventing slippage.

Lightweight Aluminum D-rings

- Extremely lightweight alloy commonly used in military and aerospace offers a higher level of security and comfort.

Integrated Suspension Relief Straps

- Provide an adjustable, continuous loop for post fall, offering suspension relief.

Reflective Material

- For greater visibility in dark and dangerous environments, reflective material is integrated on legs, chest, shoulders and back.

Ultra-Soft Edging

- Moves with you - doesn't rub or chafe.

Hybrid Comfort Padding

- Lightweight, moisture wicking, and breathable padding won't move or slip, keeping the wearer comfortable at all times.

Lanyard Keepers

- Easy holstered snap hooks breakaway to avoid trip hazard.

Built-In Carrying Pocket

- Conveniently holds and protects a mobile phone, camera, or other items.

Rigid Hip Padding Loops

- Prevents equipment pouches from sagging and reduces abrasion in vulnerable areas

Web-Locking Quick-Connect Buckles

- Lightweight one-handed use with memory-fit web-lock ensures fast, non-slipping connections.

** On selected models



BONUS
Harness storage
back pack with every
ExoFit NEX™ harness



Body Harnesses

3M™ DBI-SALA® ExoFit NEX™ Riggers Harness

Ideal for use as a professional general purpose harness in rigging, ladder climbing and confined space access work.

Front and rear lightweight aluminum D-rings, Web-Locking Quick-Connect Buckles, Vertical torso adjuster, nonslip hybrid comfort padding, suspension trauma straps, confined space attachment points, impact indicator.



SAP ID	Legacy ID	Model #	Size
7012877244	70007925673	603S2018	Small
7012889325	70007925467	603M2018	Medium
7012867292	70007926127	603L2018	Large
7012887408	70007926218	603XL2018	Extra Large

3M™ DBI-SALA® ExoFit NEX™ Cross-Over Harness

Ideal for the professional performing roof construction, maintenance and ladder access work.

Front and rear lightweight aluminum D-rings, Web-Locking Quick-Connect Buckles, Vertical torso adjuster, nonslip hybrid comfort padding, suspension trauma straps, impact indicator.



SAP ID	Legacy ID	Model #	Size
7012874200	70007946505	613S2016	Small
7012892787	70007926655	613M2016	Medium
7012880979	70007941803	613L2016	Large
7012889814	70007936696	613XL2016	Extra Large

3M™ DBI-SALA® ExoFit NEX™ Riggers Harness with Stainless Steel Hardware

Ideal for use as a professional general purpose harness in rigging, ladder climbing and confined space access work.

Front and rear lightweight Stainless Steel D-Rings, Stainless Steel Quick-Connect Buckles, Vertical torso adjuster, nonslip hybrid comfort padding, suspension trauma straps, confined space attachment points, impact indicator.



SAP ID	Legacy ID	Model #	Size
7012883731	70007927331	603S1020	Small
7012873327	70007927349	603M1020	Medium
7012892744	70007928552	603L1020	Large
7012881921	70007928560	603XL1020	Extra Large

3M™ DBI-SALA® ExoFit NEX™ All Purpose Harness

Ideal for the professional performing confined space access work, ladder access and rescue.

Front and rear lightweight aluminum D-rings, Web-Locking Quick-Connect Buckles, Vertical torso adjuster, nonslip hybrid comfort padding, suspension trauma straps, confined space attachment points, impact indicator.



SAP ID	Legacy ID	Model #	Size
7012869327	70007929378	623S2018	Small
7012876142	70007926010	623M2018	Medium
7012883466	70007925798	623L2018	Large
7012887325	70007925764	623XL2018	Extra Large

Also available: models with additional features suitable for specific industry applications

Body Harnesses

3M™ DBI-SALA® ExoFit NEX™ Tower Workers Harness

Ideal for the professional performing pole work, rigging and work positioning.

Front and rear lightweight aluminum D-rings, Web-Locking Quick-Connect Buckles, Vertical torso adjuster, nonslip hybrid comfort padding, suspension trauma straps, impact indicator, includes suspension seat.



SAP ID	Legacy ID	Model #	Size
7012889065	70007935102	653S4016	Small
7012869493	70007926366	653M4016	Medium
7012892947	70007928917	653L4016	Large
7012867836	70007943510	653XL4016	Extra Large

3M™ DBI-SALA® ExoFit NEX™ Climbing Harness

Ideal for the professional performing rescue and emergency services, industrial rope access, abseiling and tower work.

Front and rear lightweight aluminum D-rings, Web-Locking Quick-Connect Buckles, Vertical torso adjuster, nonslip hybrid comfort padding, suspension trauma straps, impact indicator.



SAP ID	Legacy ID	Model #	Size
7012890205	70007939559	683S4016	Small
7012882315	70007931937	683M4016	Medium
7012888789	70007938502	683L4016	Large
7012868885	70007947370	683XL4016	Extra Large

3M™ DBI-SALA® ExoFit NEX™ Wind Energy Harness

Ideal for the professional wind tower worker, uniquely designed with specialised features for wind energy needs.

Front and rear lightweight aluminum D-rings, Web-Locking Quick-Connect Buckles, Vertical torso adjuster, nonslip hybrid comfort padding, suspension trauma straps, impact indicator, includes wear pad on waist belt.



SAP ID	Legacy ID	Model #	Size
7012876081	70007930723	603S4044	Small
7012889869	70007930699	603M4044	Medium
7012888122	70007943759	603L4044	Large

3M™ DBI-SALA® ExoFit NEX™ Flotation Harness

Ideal for the professional requiring both fall and buoyancy protection in open or closed waters.

300N integral personal flotation device, rear stainless steel D-ring, front fall arrest loops, stainless steel quick-connect buckles, non-slip hybrid comfort padding, suspension trauma straps, impact indicator.



SAP ID	Legacy ID	Model #	Size
	70008286240	603S1036	Small 300N
7012916643	70007943023	603M1036	Medium 300N
7012872042	70007946786	603L1036	Large 300N
	70007956421	603XL1036	Extra Large 300N

3M™ DBI-SALA® Delta™ Full-Body Harnesses

The safety harness that won't weigh you down.

Delta™ harnesses combine a set of “industry-first” advancements, with popular features making them the workhorse of the industry. Today's Delta™ represents the culmination of more than twenty years of design, research, manufacturing know-how and on-the-job performance.

Features and Benefits:

Quick-Connect Buckles

- Offers one-handed operation and smooth adjustment.

Easy Grip End Tabs and Keepers

- For fast, efficient and secure web adjustment.

Stand-Up Dorsal D-Ring

- Patented spring-loaded design automatically stands up ensuring fast, easy and safe connections to your fall arrest system.

Impact Indicator**

- Rip-stitch indicator allows the user to quickly and easily inspect the harness for impact loading.

Label Pack

- Laminated PVC labels resistant to abrasion, UV, ambient heat, water and a wide range of chemicals. Features permanent indented print of critical product information ensuring it remains visible for the life of the harness.

RFID equipped

- Helps track equipment and manage safety inspection programs.

** On selected models



BONUS

Harness storage bag with every Delta™ harness

Body Harnesses

3M™ DBI-SALA® Delta™ Riggers Harness

Ideal for use in rigging, confined space, ladder access and general height safety.

Large rear fall arrest rated stand-up D-ring, front fall arrest rated D-ring, confined space attachment points, quick-connect buckles, corrosion resistant hardware, fully adjustable.



SAP ID	Legacy ID	Model #	Size
7012885461	70007941654	803XS0018	Extra Small
7012890630	70007926416	803S0018	Small
7012867302	70007925822	803M0018	Medium
7012878798	70007925707	803L0018	Large
7012871671	70007925046	803XL0018	Extra Large

3M™ DBI-SALA® Delta™ Riggers Harness with Stainless Steel Hardware

Ideal for use in rigging, confined space, ladder access and general height safety.

Large rear fall arrest rated Stainless Steel D-ring, front fall arrest rated D-ring, confined space attachment points, stainless Steel 2/3 bar buckles, corrosion resistant hardware, fully adjustable.



SAP ID	Legacy ID	Model #	Size
7012869427	70007930970	803S1022	Small
7012892471	70007930970	803M1022	Medium
7012873389	70007926424	803L1022	Large
7012879132	70007938528	803XL1022	Extra Large

3M™ DBI-SALA® Delta™ Cross-Over Harness

Ideal for use in roof construction, maintenance and ladder access work.

Large rear fall arrest rated stand-up D-ring, front fall arrest D-ring, quick-connect buckles, corrosion resistant hardware, fully adjustable.



SAP ID	Legacy ID	Model #	Size
7012871966	70007946844	813XS0016	Extra Small
7012880100	70007934378	813S0016	Small
7012892644	70007932083	813M0016	Medium
7012874933	70007925251	813L0016	Large
7012879774	70007946752	813XL0016	Extra Large

3M™ DBI-SALA® Delta™ All Purpose Harness

Ideal for use in multi purpose access including confined space entry, rigging, ladder access work and work positioning at height.

Large rear fall arrest rated stand-up D-ring, front fall arrest rated D-ring, confined space attachment points, waist belt with side D-rings, quick-connect buckles, corrosion resistant hardware, fully adjustable.



SAP ID	Legacy ID	Model #	Size
7100329434	70007930806	823S0018	Small
7100329435	70007925855	823M0018	Medium
7100246042	70007925616	823L0018	Large
7100246123	70007927141	823XL0018	Extra Large

3M™ DBI-SALA® Delta™ Tower Workers Harness

Ideal for use by telecommunications and power industry personnel when working on towers and poles.

Large rear fall arrest rated stand-up D-ring, frontal fall arrest/belay loops, confined space attachment points, padded waist belt with side D-rings, pole/restraint D-rings, quick-connect buckles, corrosion resistant hardware, fully adjustable.



SAP ID	Legacy ID	Model #	Size
7012888013	70007936365	853S0018	Small
7100237260	70007925160	853M0018	Medium
7100208192	70007928818	853L0018	Large
7100246124	70007932042	853XL0018	Extra Large

3M™ DBI-SALA® Delta™ Miners Harness

Ideal for use by mining industry personnel for use with battery packs and self rescuers.

Large rear fall arrest rated stand-up D-ring, front fall arrest rated D-ring, confined space attachment points, integral miners belt with battery and self rescue straps, reflective tape, suspension trauma straps, quick-connect buckles, corrosion resistant hardware, fully adjustable.



SAP ID	Legacy ID	Model #	Size
7012878991	70007947362	823S0035	Small
7012871367	70007934790	823M0035	Medium
7012890133	70007929410	823L0035	Large
7012892415	70007932737	823XL0035	Extra Large

Also available: models with additional features suitable for specific industry applications

Body Harnesses

3M™ DBI-SALA® Delta™ Live Line & Standard Linesman Harness

(Resistant to electrical conductivity)*

Ideal for use when working on high and low voltage live lines from an EWP vehicle.

Rear fall arrest rated webbing loop with integrated dorsal extension, frontal fall arrest/belay loops, confined space attachment points, leather insulators, no metal hardware above the waist, quick-connect buckles, corrosion resistant hardware, fully adjustable.

*No metal hardware above the waist



SAP ID	Legacy ID	Model #	Size
7012869401	70007937165	803S0009	Small
7012880058	70007935292	803M0009	Medium
7012889771	70007937082	803L0009	Large
7012887552	70007937090	803XL0009	Extra Large

3M™ DBI-SALA® Delta™ Cross-Over Comfort Harness

Ideal for use in roof construction, maintenance and ladder access work.

Large rear fall arrest rated D-ring, front fall arrest rated D-ring, quick-connect buckles, corrosion resistant hardware, fully adjustable, built-in shoulder, back and leg comfort padding.



SAP ID	Legacy ID	Model #	Size
7012870846	70007943221	843S2016	Small
7012880181	70007935714	843M2016	Medium
7012889647	70007950911	843L2016	Large
7012882524	70007935722	843XL2016	Extra Large

3M™ DBI-SALA® Delta™ Riggers Comfort Harness

Ideal for use in rigging, confined space, ladder access and general height safety.

Large rear fall arrest rated D-ring, front fall arrest rated D-ring, confined space attachment points, quick connect buckles, aluminium hardware, fully adjustable, built-in shoulder, back and leg comfort padding.



SAP ID	Legacy ID	Model #	Size
7012888637	70007937728	833S2018	Small
7012881487	70007927455	833M2018	Medium
7012892699	70007931218	833L2018	Large
7012870921	70007935573	833XL2018	Extra Large

3M™ DBI-SALA® Delta™ Welders Harness*

Ideal for use in 'Hot Work' and arc flash environments.

Rear stand-up D-ring, front fall arrest rated loops, confined space loops, Nomex®/Kevlar® fibre webbing, dielectric hardware.

Note: Specially designed Welders Lanyards are also available to complement/use with this harness.

*Arc flash, flame, heat and cut resistant



SAP ID	Legacy ID	Model #	Size
7012890437	70007932851	320S2066NK	Small
7012885236	70007927729	320M2066NK	Medium
7012875092	70007930459	320L2066NK	Large
7012867459	70007945218	320XL2066NK	Extra Large

Also available: models with additional features suitable for specific industry applications

Body Harnesses



3M™ DBI-SALA® Fall Protection Kits

Suited for specific worker applications, our kits include all the necessary components of the ABC of fall protection to ensure worker safety.



SAP ID	Legacy ID	Model #	Description
7012889100	70007930988	1900-0004	Construction Workers Kit , includes: 823M0018 (DBI SALA Delta All Purpose Harness), E849-015 (DBI SALA Tie off Adaptor), Z90203636 (DBI SALA EZ Stop Shock Absorbing Webbing Lanyard), 1900-0000 Equipment/Kit Bag, 3101615 (DBI-SALA Nano-Lok™ Extended Length Single Leg SRL with Quick Connector). Also available with small, large or extra large harness.
7012886806	70007928529	1900-0005	Professional Roof Workers Kit , includes: Harness (814M0016) Yellow, E849-015, P6711-015-36-58, Z90103636, 1900-0000 Equipment / Kit Bag. Also available with small, large or extra large harness.

3M™ DBI-SALA® Miners Belts



SAP ID	Legacy ID	Model #	Description
7100246125	70007939047	E100M-0837	Medium, with 2 front D-rings, detachable braces, battery pack and self rescue straps, reflective tape on front and rear
7100246126	70007942058	E112M-0033	Medium, with detachable battery pack and self rescue straps, 2 front D-rings, reflective tape along entire length of belt

Note: Miners belts are available in small, medium, large and extra large sizes.

Also available: models with additional features suitable for specific industry applications

3M™ Protecta™ P200 Full-Body Harnesses

3M™ Protecta P200 fall arrest harnesses provide reliable protection, comfort and convenience; now with upgraded features and a sleek, modern look – all at an affordable price.

Available in a variety of styles and configurations, these new harnesses have enhanced features including quick connect buckles, auto-resetting lanyard keepers as well as softer and more durable hip padding.

Features and Benefits:

- **D-Ring Placement**
Conveniently placed front fall arrest D-ring helps you stay balanced and centred.
- **Auto-resetting Lanyard Keepers**
Provides easy parking and release of snap hooks, scaffold hooks or Karabiners.
- **Impact Indicators ****
Make it simple to inspect the harness for damage and help ensure it's safe to use
- **Modern Black Components**
Zinc plated steel with electro deposit paint finish
- **Protected Labels**
For long-term identification and inspection
- **Comfort Padding****
Softer and more robust hip pad is 3x thicker* for extra comfort
- **EZ-Link SRL Adapter**
Integrated easy-link web SRL adapter lets you quickly and easily connect and disconnect personal SRL's **
- **Improved Belt**
Durable and sturdy belt for tool bag carrying convenience**
- **Gear Tool Loops****
Tools can be secured while working at heights, to keep people and property safe anywhere below you

** On selected models



Body Harnesses

3M™ Protecta® P200 Riggers Harness

- Quick connect buckles
- Rear fall arrest D-ring
- Front and rear adjustable chest strap
- Soft EZ-link SRL adapter



SAP ID	Legacy ID	Model #	Size
7012872100	XF003916616	1130116	Universal

3M™ Protecta® P200 Riggers Harness with Pads

- Quick connect buckles
- Rear fall arrest D-ring
- Front and rear adjustable chest strap
- Comfort padding
- Soft EZ-link SRL adapter



SAP ID	Legacy ID	Model #	Size
7012887404	AT010644337	1161676	Small
7012887855	AT010644345	1161677	Medium
7012889155	AT010644352	1161678	Large
7012876114	AT010644360	1161679	Extra Large

3M™ Protecta® P200 All Purpose Harness

- Quick Connect buckles
- Front and Rear fall arrest D-ring
- Comfort padding
- Soft EZ-link SRL adapter
- Padded Waist belt with Side D rings



SAP ID	Legacy ID	Model #	Size
7012878852	AT010644378	1161680	Small
7100246038	AT010644386	1161681	Medium
7100246040	AT010644394	1161682	Large
7100246041	AT010644402	1161683	Extra Large

3M™ Protecta® P200 Miners Harness

- Quick Connect buckles
- Integrated miners belt
- Comfort padding
- Soft EZ-link SRL adapter
- Front and Rear Fall Arrest D Rings



SAP ID	Legacy ID	Model #	Size
7012881810	AT010644410	1161684	Small
7012877593	AT010644428	1161685	Medium
7012875192	AT010644436	1161686	Large
7012866613	AT010644444	1161687	Extra Large

Body Harnesses

3M™ Protecta® P200 Welders Harness

- Quick Connect buckles
- Meta Aramid/Kevlar webbing
- Front and Rear Fall Arrest D rings



SAP ID	Legacy ID	Model #	Size
7012878898	AT010644451	1161688	Small
7012874420	AT010644469	1161689	Medium
7012892384	AT010644477	1161690	Large
7012882968	AT010644485	1161691	Extra Large

3M™ Protecta® P200 Tower Workers Harness with O-Rings

- Quick connect buckles
- Rear fall arrest D-ring
- Adjustable chest strap
- 2 x work positioning O-rings
- Soft Sternum Fall Arrest Loops
- Padded Waist Belt
- 300mm dorsal extension
- Tool Loops



SAP ID	Legacy ID	Model #	Size
7012874965	AT010644535	1161696	Small
7012878742	AT010644543	1161697	Medium
7100287917	AT010644550	1161698	Large
7012867668	AT010644568	1161699	Extra Large

3M™ Protecta® P200 Live Line Harness

- Quick connect buckles on legs only
- Only plastic coated hardware above the waist
- 300mm dorsal extension
- Leather insulation on metal components



SAP ID	Legacy ID	Model #	Size
7012870768	AT010644659	1161708	Small
7012889580	AT010644667	1161709	Medium
7012890986	AT010644675	1161710	Large
7012889258	AT010644683	1161711	Extra Large

3M™ Protecta® P200 Y Back Harness

3M™ Protecta X Y-Back Utility fall arrest harnesses provide reliable protection, comfort, convenience and ease of use; now with upgraded features and a sleek, modern look – all at an affordable price.



SAP ID	Legacy ID	Model #	Size
7012929174	AT010791534	1161771	Small
7012880900	AT010791542	1161772	Medium
7012916785	AT010791559	1161773	Large
7100379667	AT010791567	1161774	X-Large

3M™ Protecta® P50 All Purpose Harness

Fall protection that's there when you need it.

Every at height worker deserves to be safe, no matter the size or nature of the job. That's why Protecta® products have become the choice of safety managers looking for reliable fall protection solutions that comply with safety regulations and help their workers get the job done.

Features and Benefits:

Multiple attachment points

- Front, rear, side D-rings for multiple work positions.

Confined space access

- Shoulder retrieval attachment points.
- Added comfort
Waist belt and padded hip/lower back pad.



Body Harnesses

3M™ Protecta® P50 Riggers Harness

Industrial harness with front and rear fall arrest rated D-ring, adjustable leg and chest straps, Sub pelvic Strap.



SAP ID	Legacy ID	Model #	Size
7012875413	AT010621574	1390061A	Universal

3M™ Protecta® P50 All Purpose Harness

Construction harness with front, rear, side D-rings, confined space attachment points, waist belt and padded hip/lower back pad.



SAP ID	Legacy ID	Model #	Size
7012873026	AT010621582	1390062A	Universal

Riggers harness with adjustable 2m integral lanyard w/snap hook



SAP ID	Legacy ID	Model #	Size
7012870739	AT010621590	1390063A	Universal

Riggers harness with adjustable 2m integral lanyard w/scaffold hook



SAP ID	Legacy ID	Model #	Size
7012867450	AT010621608	1390064A	Universal

3M™ Protecta® P50 Fall protection Kits

First™ Construction Workers Kit

SAP ID	Legacy ID	Model #	Description
7012873979	70007929576	AA1020AU	P50 Fall Arrest Harness (1390061A), 1.8 m Rebel Personal SRL (3100640), 1.5 m round anchor strap (1003584), packed in a rugged re-useable carry bucket

First™ Roof Workers Kit

SAP ID	Legacy ID	Model #	Description
7012867993	70007925012	AA1000AU	P50 Fall Arrest Harness (1390061A), 15 m kernmantle rope lifeline with 1 m integral shock absorbing lanyard, 1.5 m round anchor strap (1003584), packed in a rugged re-useable carry bucket



AA1000AU



Connectors

Specific jobsites call for unique connectors. That's why we developed a comprehensive product range, all rigorously tested to meet almost all applications.

Unique risks of leading and sharp edges:

1 Increased fall distance

Anchoring at foot level increases the distance needed for fall clearance.

When workers are attached at foot-level, as they often are in leading edge applications, they will fall farther than they would if they were anchored at shoulder height or above. The required clearance when anchored at foot-level varies by product so make sure to reference the products' user instructions.

2 Lock-up speed

Required time to reach velocity to engage lifeline takes longer because of longer fall distance.

Self-retracting lifelines react to a fall when the lifeline accelerates out of the housing at a certain velocity. When self-retracting lifelines are anchored at foot-level, the lifeline does not achieve the required acceleration during a fall until after the user's D-ring passes over the leading edge and below the level of the anchor. This means the user has already fallen approximately 1.5 meters before the self-retracting lifeline device will engage to arrest the fall.

3 Increased fall arrest forces

Potentially higher impact to the body when the fall is arrested.

Falling further means the impact on the body through the fall protection system will potentially be greater when the fall is arrested. This is why leading edge Self Retracting Lifelines are designed with an energy absorber at the end of the lifeline, or as an integrated back-pack style, that connects to the users harness.

4 Increased potential for swing hazards

This could create a sawing action on a lifeline strung taught over a sharp edge.

Depending on a worker's position during a fall, they may swing like a pendulum after the fall is arrested. While swinging is a hazard under any circumstances, the danger is compounded if the worker's lifeline is strung taught over a sharp edge and saws back and forth across that edge.

3M™ DBI-SALA® Shock Absorbing Lanyards

Built for toughness and exceptional performance - trust the best!

All DBI-SALA shock absorbing lanyards are available in either single or double tail configurations constructed from webbing, wire or rope in a variety of styles (elasticated, non-elasticated, adjustable and tie-back), and are available with a wide combination of hook & karabiner terminations to suit your specific needs and applications.

Choosing a lanyard

Look for quality in these features when selecting a lanyard.

A. Webbing

Choose your webbing based on the type of conditions you work in. Options include Nomex®, Kevlar®, Kermantle rope and cable

B. Connector/hook

Expanded range of 3M™ DBI-SALA® Connectors allowing for one-handed use, won't pinch thumbs or fingers, for all industry applications and demands

C. Length

The standard lanyard length is 2m, but other lengths are available

D. Shock absorber

Smallest Shock absorber in the world, with HI-10™ high tenacity fibre energy management material, keeps forces below 6kN.

E. Labelling

Product data protected from everyday use, RFID equipped



Types of 3M™ DBI-SALA® Connectors

Expanded range of DBI-SALA Connectors includes triple action snap and scaffold hooks plus transverse loading options. All of our connectors feature 16kN rated gates.

	Steel Snap Hook	Aluminium Snap Hook	Stainless Steel Snap Hook	Aluminium Snap Hook Triple Action	Aluminium Scaffold Hook	Steel Scaffold Hook	Saflok Max Steel Rebar Hook	Saflok Tower Hook	Aluminium Scaffold Hook Triple Action	Comfort Grip Hook	Steel Karabiner Triple Action	Stainless Steel Karabiner Triple Action	Aluminium Karabiner Triple Action	Aluminium Karabiner Triple Action with Eye
Gate Opening	19mm	19mm	19mm	20mm	57mm	64mm	87mm	116.84mm	63.5mm	57mm	20mm	20mm	18mm	18mm
Gate Strength	16kN	16kN	16kN	16kN	16kN	16kN	16kN	16kN	16kN	16kN	16kN	16kN	16kN	16kN
Model #	9502116	9505254	9505253	2000183	9502058	2109193	2000125	2000194	2000182	2000214	R-113	R-119	2000184	8700552

3M™ DBI-SALA® Shock Absorbing Lanyards



Z12202519E



Z10200909E



Z11200909

3M™ DBI-SALA® Shock Absorbing Webbing Lanyards



SAP ID	Legacy ID	Model #	Description	Single-Leg/ Twin-Leg	Connector 1 (Harness)	Connector 2 (Anchor)
7012878544	70007926861	Z10200909	Non Adjustable, 2.0m with double action snap hooks on all connections	Single	9502116	9502116
7012875278	70007934618	Z10200909E	Elasticated, 2.0m with double action snap hooks on all connections	Single	9502116	9502116
7012883618	70007932232	Z10202519E	Elasticated, 2.0m with aluminium snap hook and scaffold hook	Single	9505254	9502058
7012887597	70007925681	Z11200919	Adjustable, 2.0m with double action snap hook and scaffold hook	Single	9502116	9502058
7012888477	70007925418	Z12202519E	Elasticated, 2.0m with aluminium double action snap hook and scaffold hooks	Twin	9505254	9502058
7100380825	70804412545	Z12206129E	Elasticated, 2.0m with aluminium triple action karabiner and scaffold hooks	Twin	8700552	2000182
7012890636	70007941621	Z13200919	Adjustable, 2.0m with double action snap hook and scaffold hooks	Twin	9502116	9502058
7012873644	AT019425597	Z12202580E	Elasticated 2.0m with aluminium double action snap hook and comfort hook	Twin	9505254	2000214

Note: DBI-SALA Shock Absorbing Lanyards are available in a range of lengths, with alternate hook and karabiner terminations to suit your specific needs and application. Contact 3M Customer Service or your local 3M Fall Protection expert for more information. All twin tail lanyards are supplied with E839 lanyard stowage points. If a dorsal extension is part of your harness the maximum lanyard assembly permitted is 1.7m or less.

3M™ DBI-SALA® Shock Absorbing Rope & Cable Lanyards



3M™ DBI-SALA® Shock Absorbing Rope Lanyards



SAP ID	Legacy ID	Model #	Description	Single-Leg/ Twin-Leg	Connector 1 (Harness)	Connector 2 (Anchor)
7012888043	70007931960	Z10200909R	Non-adjustable, 2.0m with double action snap hooks on all connections	Single	9502116	9502116
7012883468	70007925475	Z11204545R	Adjustable, 2.0m with stainless steel triple action karabiners on all connections	Single	R-119	R-119
7012875352	70007935094	Z11206119R	Adjustable, 2.0m with aluminium triple action karabiner and scaffold hook	Single	8700552	9502058
7012880757	70007934345	Z11206159R	Adjustable, 2.0m with aluminium triple action karabiner on all connectors	Single	8700552	2000184
7012885205	70007929956	Z11204545CR	Cut Resistant, Adjustable, 2.0m with stainless steel triple action karabiners on all connections	Single	R-119	R-119
7012873098	70007963344	Z11206119CR	Cut Resistant, Adjustable, 2.0m with aluminium triple action karabiner and scaffold hook	Single	8700552	9502058
7012874828	70007925889	Z12202519R	Non Adjustable, 2.0m with aluminium snap hook and scaffold hooks	Twin	9505254	9502058
7012872330	70007940854	Z13206119R	Adjustable, 2.0m with aluminium triple action karabiner and scaffold hooks	Twin	8700552	9502058
7100380707	70007927190	Z13206129R	Adjustable, 2.0m with aluminium triple action karabiner and triple action scaffold hooks	Twin	8700552	2000183
7012867221	70007938791	Z13206159R	Adjustable, 2.0m with aluminium triple action karabiners on all connections	Twin	8700552	2000184
7012888716	70007937348	Z13206119CR	Cut Resistant, Adjustable, 2.0m with aluminium triple action karabiner and scaffold hooks	Twin	8700552	9502058

3M™ DBI-SALA® Shock Absorbing Lanyards - Wire Cable - Double Tail



SAP ID	Legacy ID	Model #	Description	Single-Leg/ Twin-Leg	Connector 1 (Harness)	Connector 2 (Anchor)
7012882674	70007930087	Z10200909WR	PVC Coated, 2.0m with double action snap hooks on all connections	Single	9502116	9502116
7012870293	70007939757	Z10204545WR	PVC Coated, 2.0m with stainless steel triple action karabiners on all connections	Single	R-119	R-119
7012879567	70007940987	Z12200919WR	PVC Coated, 2.0m with double action snap hook and scaffold hooks	Twin	9502116	9502058
7012881816	70007950010	Z12204545WR	PVC Coated, 2.0m with stainless steel triple action karabiners on all connections	Twin	R-119	R-119
7012928985	70007955993	Z12207575WR	PVC Coated, 2.0m with triple action karabiners on all connections	Twin	R-113	R-113

Note: DBI-SALA Shock Absorbing Lanyards are available in a range of lengths, with alternate hook and karabiner terminations to suit your specific needs and application. Contact 3M Customer Service or your local 3M Fall Protection expert for more information. All twin tail lanyards are supplied with E839 lanyard stowage points. If a dorsal extension is part of your harness the maximum lanyard assembly permitted is 1.7m or less.

3M™ DBI-SALA® Shock Absorbing Lanyards



Z60200919NKE



Z51203636



Z60203634E

3M™ DBI-SALA® Shock Absorbing Lanyards Webbing



SAP ID	Legacy ID	Model #	Description	Single-Leg/ Twin-Leg	Connector 1 (Harness)	Connector 2 (Anchor)
7012868507	70007926887	Z51203636	Adjustable, 2.0m with double action snap hooks on all connections	Single	2000161	2000161
7012879282	70007927695	Z90203636	Non-Adjustable, 2.0m with double action snap hook on all connections	Single	2000161	2000161
7012877462	70007930004	Z90203636E	Elasticated, 2.0m with double action snap hook on all connections	Single	2000161	2000161

3M™ DBI-SALA® Shock Absorbing Welders Lanyards

High temperature lanyards constructed from Nomex®/Kevlar® fibre webbing, ideal if you are welding, cutting or grinding, or in a potentially explosive or high-voltage electrical environment.



SAP ID	Legacy ID	Model #	Description	Single-Leg/ Twin-Leg	Connector 1 (Harness)	Connector 2 (Anchor)
7012886275	70007926812	Z90200909NK	Non adjustable, 2.0m with with double action snap hooks on all connections	Single	9502116	9502116
7012877904	70007930814	Z90200909NKE	Elasticated 2.0m with double action snap hooks on all connections	Single	9502116	9502116
7012876520	70007925327	Z60200919NKE	Elasticated 2.0m with double action snap hook and scaffold hooks	Twin	9502116	9502058
7012884603	70007937413	Z60204545NKE	Elasticated 2.0m with stainless steel triple action karabiners on all connections	Twin	R-119	R-119

Nomex® and Kevlar® are registered trademarks of E.I. du Pont de Nemours and Company.

3M™ DBI-SALA® Pole Straps and Lifelines



E601-020



E613B0351717



E90252559

3M™ DBI-SALA® Webbing Pole Straps

SAP ID	Legacy ID	Model #	Description	Connector 1	Connector 2
7100237261	70007927653	E601-020	2.0m with double action snap hooks on all connections	2000161	2000161
7100210172	70007930186	E601-025	2.5m with double action snap hooks on all connections	2000161	2000161
7012887361	70007925178	E601-030	3.0m with double action snap hooks on all connections	2000161	2000161
7012874761	70007947685	E601-035	3.5m with double action snap hooks on all connections	2000161	2000161
7012874247	AT010644782	E613B0202525	2.0m Black webbing with Blue trigger style double action snap hooks	9505254	9505254
7012884932	AT010791989	E613B0252525	2.5m Black webbing with Blue trigger style double action snap hooks	9505254	9505254
7012882190	AT010791864	E613B0201717	2.0m Black webbing with Red double action snap hooks	2000168	2000168
7012870574	AT010791872	E613B0251717	2.5m Black webbing with Red double action snap hooks	2000168	2000168
7012876964	AT010791880	E613B0301717	3.0m Black webbing with Red double action snap hooks	2000168	2000168
7012871618	70007937801	E613B0351717	3.5m Black webbing with Red double action snap hooks	2000168	2000168
7012878417	AT010791906	E613B0501717	5.0m Black webbing with Red double action snap hooks	2000168	2000168
7012868447	70007948519	E613BLU0250909V	2.5m Blue webbing with trigger style double action snap hooks and Velcro keeper	9502116	9502116
7012870903	70007935672	E613BLU0351818	3.5m Blue webbing with Blue double action snap hooks	2000167	2000167
7012888837	AT010643933	E613-BLU-035-61-18	3.5m Blue webbing with triple action karabiner and Blue double action snap hook	8000552	2000167

3M™ DBI-SALA® Rope Pole Straps

SAP ID	Legacy ID	Model #	Description	Connector 1	Connector 2
7012888837	70007945804	E90202559	2.0m with double action snap hook and triple action karabiner	9505254	2000184
7012866616	70007927687	E90252559	2.5m with double action snap hook and triple action karabiner	9505254	2000184
7012892197	70007950457	E90207575	2.0m with triple action karabiners on all connections	R-113	R-113

3M DBI-SALA Lifeline Assembly Systems

3M™ DBI-SALA® 11mm Kernmantle rope lifeline with sewn thimble eye, fitted with connector at one end and sewn end stop on the other, rope adjuster with shock absorber fitted with connector.



P67110100958Z

SAP ID	Legacy ID	Model #	Length	Connector
7012874182	70007955258	P67110100958Z	10m	9502116
7012883126	70007939716	P67110027558Z	2m	R-113
7012890692	70007943007	P67110057558Z	5m	R-113
7012882243	70007931895	P67110157558Z	15m	R-113
7012886187	70007961629	P67110307558Z	30m	R-113

Note: DBI-SALA Pole Straps and Lifelines are available in a range of lengths, with alternate hook and karabiner terminations to suit your specific needs and application. Contact 3M Customer Service or your local 3M Fall Protection expert for more information.

3M DBI-SALA® Personal Self Retracting Lifelines

3M™ DBI-SALA® Nano-Lok™ LE Self-Retracting Lifelines

- Integrated, backpack-style Energy Absorber**
- Energy absorber and connector work together to limit forces on both the worker and the impacted edge.
 - Backpack design stays tight to the harness and helps evenly distribute units weight

- Easy-to-install connector**
- Provides 360 degrees of rotation, the direct-to-harness connection provides seamless integration of the energy absorber and leaves the D-ring open for rescue or other equipment

- Sharp Edge Icon**
- Global sharp edge icon to quickly and easily identify sharp edge products

- Tough and flexible webbing or galvanized cable lifelines**
- 2.4m of 5mm cable or 20mm Kevlar®/Dyneema fibre webbing provides maximum range of motion, durability and cut resistance

- Impact-resistant housing**
- Lightweight thermoplastic housing provides maximum durability

Compliant to AS 1891.3:2020 Amd1:2021



3M™ DBI-SALA® Nano-Lok 2G Self-Retracting Lifelines

- High capacity external energy absorber and impact indicator**
- Specialised built-in external absorption system maintains safe fall arrest forces for users and tools up to 140 kg and provides a visual alert that the SRL has been involved in a fall

- 1.8m 19mm Dynema polyester web lifeline**
- The synthetic lifeline reduces overall weight and the retractable design provides freedom of movement, keeps the lifeline out of the worker's way and reduces dragging, snagging and trip falls.

- Tough and impact resistant thermoplastic housing**
- Compact and durable housing is designed to withstand the demands of challenging jobsites, it's built to last.

- Wide variety of configurations available**
- There are a wide variety of models to choose from to suit almost any application for complete jobsite versatility and flexibility

- Fast connection system**
- Simple, light-weight connector allows backward compatibility

Compliant to AS 1891.3:2020 Amd1:2021



	Steel Snap Hook	Steel Snap Hook Tie Back	Aluminium Scaffold Hook	Steel Scaffold Hook	Aluminium Scaffold Hook	Comfort Grip Hook	Aluminium Scaffold Hook	Steel Karabiner Double Action	Steel Karabiner Triple Action	Stainless Steel Karabiner Triple Action	Aluminium Karabiner Triple Action	Cab Mount
Gate Opening	19mm	19mm	57mm	64mm	57mm	57mm	63.5mm	17mm	20mm	20mm	18mm	N/A
Gate Strength	16kN	16kN	16kN	16kN	16kN	16kN	16kN	16kN	16kN	16kN	16kN	N/A
Model #	9502116	9501804	9502058	2109193	2007153	2000214	2000209	2000112	R-113	R-119	2000184	3100084
												N/A

Not available for separate sale

	Steel Fast Connection System	Steel Direct Connect	Steel Direct Connect	Steel Direct Connect	Steel Twin Connector
Model #	3100480	3100127	3100064	3100088	3100109



3100480



3100088

3M™ DBI-SALA® Nano-Lok™ Self Retracting Lifelines



3M™ DBI-SALA® Nano-Lok™ LE Self-Retracting Lifelines

SAP ID	Legacy ID	Model #	Description	Single-Leg/Twin-Leg	Connector 1 (Housing)	Connector 2 (Lifeline)
7012818755	70007446910	3101640	2.4m Webbing Lifeline	Twin	LE direct connect	2000209
7012819211	70007456471	3500255	2.4m Cable Lifeline	Twin	LE direct connect	2000209



3M™ DBI-SALA® Nano-Lok™ 2G Self-Retracting Lifelines

SAP ID	Legacy ID	Model #	Description	Single-Leg/Twin-Leg	Connector 1 (Housing)	Connector 2 (Lifeline)
7012818632	70007455226	3101330	1.8m Webbing Lifeline	Single	Direct Connect	9502116
7012818633	70007444188	3101331	1.8m Webbing Lifeline	Single	Direct Connect	9502058
7012818634	70007455234	3101339	1.8m Webbing Lifeline	Single	R-113	R-113
7100247566	70007931119	3101340	1.8m Webbing Lifeline	Single	R-119	R-119
7100230475	70804501743	3101709	1.8m Webbing Lifeline	Single	2000184	2000214
7100310004	70007455242	3101345	1.8m Webbing Lifeline	Twin	Direct Connect	2100193
7100247567	70007444246	3101346	1.8m Webbing Lifeline	Twin	Direct Connect	9502058
7100230476	70804506031	3101718	1.8m Webbing Lifeline	Twin	Direct Connect	2000214
7100230477	70804506049	3101719	1.8m Webbing Lifeline	Twin	Direct Connect	2000209

Connectors



3100604

3101615

3101366

3M™ DBI-SALA® Nano-Lok™ Tie-Back Self Retracting Lifelines

SAP ID	Legacy ID	Model #	Description	Single-Leg/Twin-Leg	Connector 1 (Housing)	Connector 2 (Lifeline)
7012691249	70007444295	3101366	2.7m Webbing Lifeline	Single	Direct Connect	9501804

3M™ DBI-SALA® Nano-Lok™ XL Self Retracting Lifelines

SAP ID	Legacy ID	Model #	Description	Single-Leg/Twin-Leg	Connector 1 (Housing)	Connector 2 (Lifeline)
7012818740	70007456174	3101615	Single 3.4m Webbing Lifeline	Single	3100064	9502116
7012818572	70007456117	3100604	Single 2.8m Webbing Lifeline	Single	2000112	2109193



3101521

3101524

3101523

3M™ DBI-SALA® Nano-Lok™ Hot Work Self Retracting Lifelines

SAP ID	Legacy ID	Model #	Description	Single-Leg/Twin-Leg	Connector 1 (Housing)	Connector 2 (Lifeline)
7012818678	70007445672	3101521	1.8m Nomex®/Kevlar® Fibre Webbing Lifeline	Single	3100127	2109193
7100247569	70007445680	3101523	1.8m Nomex®/Kevlar® Fibre Webbing Lifeline	Single	2000112	9502116
7012818681	70007455838	3101524	1.8m Nomex®/Kevlar® Fibre Webbing Lifelines	Twin	3100109	2109193



3M™ DBI-SALA™ Smart Lock Self-Retracting Lifelines

- **Swivelling anchorage & Karabiner included**
- **Ergonomic handle.**
Designed for easy transport and support during overhead installation.
- **Magnetic retraction control.**
The lifeline rewinds at an evenly controlled pace, helping reduce the possibility for harm to people or equipment (compared to solutions with gear based retraction).
- **Patent pending dual label system.**
An extra label stored in the bumper on the lifeline allows users to easily access critical asset information and keeps it protected from damage to help reduce cost of ownership.
- **Highly-visible orange energy-absorber cover.**
Identifies product as meeting Leading Edge standards and allows you to more easily confirm that workers are tied off (Horizontal models).
- **6kN Maximum Arresting Force (MAF)**
- **190kg weight capacity**



3M™ DBI-SALA® Sealed-Blok™ Self-Retracting Lifeline

When grease, dirt and moisture are just part of your job. Keeping them from affecting the performance of your SRL is ours. These sealed SRLs are constructed from heavy-duty, corrosion-resistant materials, and incorporate a patented concept that separates all dynamic components—including the motor spring and brake—from foreign elements.

Carrying handle

- Built-in design for easy transport—certified as secondary 3101001 fall arrest rated anchorage point.

Galvanised & stainless steel cable

- Abrasion resistant and corrosion-resistant lifeline options.

Self-locking swivel hook

- Limits lifeline twisting
- Integrated impact indicator
- 16kN gate reduces accidental disengagements (“roll-out”)

Fast Line

- Provides the user with ability to replace the lifeline in the field.



3M™ DBI-SALA® Ultra-Lok™ Self-Retracting Lifelines

Rugged durability. Extremely lightweight. These SRLs are engineered to deliver everything you need to maximize your safety, efficiency and comfort. Stainless steel components, an antiratcheting brake system and a semi-sealed design result in a system that's truly built to last.

Top swivel

- Limits lifeline twisting for smoother operation.

Thermoplastic housing

- Lightweight, compact and durable.

Ergonomic cable handle

- Provides added comfort and ease-of-use when making connections.

Multiple lifeline options

- Galvanized or stainless steel cable

Self-locking swivel hook

- Limits lifeline twisting
- Integrated impact indicator
- 16kN gate reduces accidental disengagements (“roll-out”)



3M™ DBI-SALA® Nano-Lok™ Extended Length Self-Retracting Lifelines (SRL's), 6 m (Overhead)

Swiveling Anchorage Loop

- Limits lifeline twisting for smooth operation.

Impact-Resistant Housing

- Tough thermoplastic housing designed to withstand demanding worksites.

Speed-Sensing Brake System

- Reduces fall clearance

Dyneema® Fibre and Polyester Web Lifeline

- Synthetic lifeline reduces overall weight and the retractable design provides freedom of movement.

High-Capacity External Energy Absorber

- Maintains safe fall arrest forces for users up to 140 kg.

Impact Indicator

- Energy Absorber deployment provides a visual alert that the SRL has been involved in a fall

	Swivel Steel Snap Hook	Swivel Steel Snap Hook	Swivel Stainless Steel Snap Hook	Swivel Stainless Steel Snap Hook	Swivel Steel Snap Hook
Gate Opening	19mm	19mm	57mm	57mm	19mm
Gate Strength	16kN	16kN	16kN	16kN	16kN
Model #	9502194	2000180	2000181	2100044	9502195

Not available for separate sale

Connectors

3M™ DBI-SALA® Sealed-Blok™ Self-Retracting Lifeline

SAP ID	Legacy ID	Model #	Description	Lifeline Connector	Fast Line
7100310020	70007459533	3400803	9m Galvanised Steel Wire Rope	2000180	
7100241113	70007450631	3400805	9m Stainless Steel Wire Rope	2000181	
7100313924	70007460077	3400950	15m Galvanised Wire Rope	2000180	✓
7100313925	70007460085	3400951	15m Stainless Steel Wire Rope	2000181	✓
7100310022	70007459772	3400866	25m Galvanised Wire Rope	2000180	✓
7012608831	70007459780	3400867	25m Stainless Steel Wire Rope	2000181	✓
7100276625	70007452074	3400971	40m Galvanised Wire Rope	2000180	✓
7100313913	70007452082	3400972	40m Stainless Steel Wire Rope	2000180	✓

3M™ DBI-SALA® Ultra-Lok™ Self Retracting Lifelines

SAP ID	Legacy ID	Model #	Description	Lifeline Connector
7100310042	70007462974	3504427	6m Galvanised Wire Rope	9502194
7100310016	70007456562	3504424	9m Galvanised Wire Rope	9502194
7100310017	70007456844	3504465	15m Galvanised Wire Rope	9502194

3M™ DBI-SALA® Nano-Lok™ Extended Length Self-Retracting Lifelines

SAP ID	Legacy ID	Model #	Description	Connector 1 (Housing)	Connector 2 (Housing)
7012608840	70804498130	3103867	6m Dyneema and Polyester Web	2000112	9502195

3M™ DBI-SALA® Karabiners

SAP ID	Legacy ID	Model #	Description	Gate Strength	Gate Opening
7012913508	AT019422370	8700130	Steel Double Action, Autolock with captive eye	16kN	20mm
1010262716	70007926986	R-113	Steel Triple Action, Autolock with captive eye	16kN	20mm
1010262725	70007930558	R-119	Stainless Steel Triple Action, Autolock with captive eye	16kN	20mm
7100261941	70007449807	2000300	Steel Triple Action, Autolock with captive eye	16kN	51mm



R-113

R-119

Note: Additional connector combinations available.

3M™ DBI-SALA® Lad-Saf™ Cable Vertical Safety System

3M™ DBI-SALA® Lad-Saf Top & Bottom Bracket Kits

SAP ID	Legacy ID	Model #	Description	Users
7100237572	70804503277	6116631	Galvanised Steel, level with top, to suit Ladder Rung	2
7100324724	70804503285	6116632	Stainless Steel, level with top, to suit Ladder Rung	2
7100237754	70804503293	6116633	Galvanised Steel, level with top, to suit Ladder Rung	4
7100261158	70804503301	6116634	Galvanised Steel to suit Mono Pole	4
7100227918	70804503327	6116636	Galvanised Steel, climb extension, to suit Ladder Rung	2
7100248361	70804503343	6116638	Stainless Steel to suit Mono Pole	4



3M™ DBI-SALA® Lad-Saf™ Pre-Swage Cable 7×19, 9.5mm Diameter

Galvanised

SAP ID	Legacy ID	Model #	Metres
7012887538	AT010622143	6115001	3m
7012886820	AT010622150	6115002	6m
7012890304	AT010622168	6115003	9m
7012878540	AT010622176	6115004	12m
7012882105	AT010622184	6115005	15m
7012888670	AT010622192	6115006	20m
7012888532	AT010643495	6115018	25m
7012882077	AT010622200	6115007	30m
7012889454	AT010643503	6115019	35m
7012879357	AT010622218	6115008	40m
7012870410	AT010643511	6115020	45m
7012887934	AT010622226	6115009	50m
7012892335	AT010643529	6115021	55m
7012912099	AT010622234	6115010	60m
7012912124	AT010643537	6115022	65m
7012912112		6115023	70m
7012929162	AT010643552	6115024	80m
7012878223		6115025	90m
7012877277		6115026	100m
7012873362		6115027	110m

SAP ID	Legacy ID	Model #	Metres
7012877844		6115028	120m
7012892153		6115029	130m
7012912102		6115030	140m
7012877754		6115050	160m
7012879958		6115051	180m

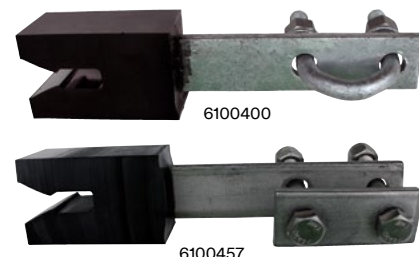
Stainless Steel

SAP ID	Legacy ID	Model #	Metres
7012877967	AT010622259	6115012	6m
7012884345	AT010622267	6115013	9m
7012917259	AT010622283	6115015	15m
7012912147	AT010622291	6115016	20m
7012912095	AT010643636	6115032	25m
7012912136	AT010622309	6115017	30m
7012875820	AT010643644	6115033	35m
7012888269		6115034	40m
7012912119	AT010643669	6115035	45m
7012912098		6115037	55m
7012882018		6115040	70m



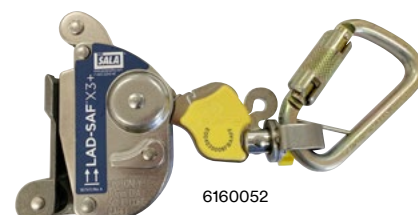
3M™ DBI-SALA® Lad-Saf™ Cable Guides

SAP ID	Legacy ID	Model #	Description	Application
7100207472	70007475786	6100400	Galvanised Assembly to suit <1-1/8" Rung, Straight	Standard
7100250925	70007470415	6100457	Stainless Steel Assembly to suit <1" Rung, Straight	Standard
7100311188	70007470464	6100515	Galvanised Assembly to suit 5-3/4" in length, 90 degree	Monopole
7012884000	70007934675	LS379	Galvanised, Straight	Monopole
7100311192	70007475851	LS379-ASS	Galvanised Assembly, Straight	Monopole



3M™ DBI-SALA® Lad-Saf™ X3+ Sleeve

SAP ID	Legacy ID	Model #	Description
7012409530	70007484242	6160052	Detachable Cable Sleeve with Zinc Plated Steel Double Action Karabiner
7012886188	AT019424947	6160065	Detachable Cable Sleeve with Zinc Plated Steel Triple Action Karabiner



Certified Lad Saf training available.
Contact your local 3M Fall Protection specialist for more information.

3M™ Protecta® Shock Absorbing Lanyards



3M™ PROTECTA® Shock Absorbing Webbing Lanyards



SAP ID	Legacy ID	Model #	Description	Single-Leg/ Twin-Leg	Connector 1 (Harness)	Connector 2 (Anchor)
7012870359	70007925442	AE529/3AU	Non-adjustable, 2.0m with snap hooks on all connections	Single	2000161	2000161
7012876708	70007927414	AE529/13AU	Non-adjustable, 1.5m with snap hooks on all connections	Single	2000161	2000161
7012889547	70007940599	AE529E/3AU	Elasticated, 2.0m with snap hooks on all connections	Single	2000161	2000161
7012869842	70007928537	AE529ADJ/3AU	Adjustable from 0.75 - 2.0m with snap hooks on all connections	Single	2000161	2000161
7012874260	70007940284	AE529ADJ/5AU	Adjustable from 0.75 - 2.0m with snap hook and scaffold hooks	Twin	2000161	2000164
7012886191	70007926879	AE529EY/5AU	Elasticated, 2.0m with snap hook and scaffold hooks	Twin	2000161	2000164

3M™ PROTECTA® Shock Absorbing Welders Lanyards



SAP ID	Legacy ID	Model #	Description	Single-Leg/ Twin-Leg	Connector 1 (Harness)	Connector 2 (Anchor)
7012874328	70007944229	AE529/3W	Non-adjustable, 2.0m with snap hooks on all connections	Single	2000161	2000161
7012873723	70007942900	AE529/5W	Non-adjustable, 2.0m with snap hook and scaffold hook	Single	2000161	2000164
7012883493	70007948808	AE529/9W	Non-adjustable, 2.0m with triple action karabiners on all connections	Single	R-113	R-113

3M™ PROTECTA® Shock Absorbing Rope Lanyards



SAP ID	Legacy ID	Model #	Description	Single-Leg/ Twin-Leg	Connector 1 (Harness)	Connector 2 (Anchor)
7012889642	70007942074	AE529ADJ/9R	Adjustable from 0.75 - 2.0m with steel triple action karabiners on all connections	Single	R-113	R-113
7012884519	AT010644832	AE529ADJ/10R	Adjustable from 0.75 - 2.0m with steel triple action karabiner and scaffold hook	Single	R-113	2000164
7012873994	AT010644840	AE529ADJY/10R	Adjustable from 0.75 - 2.0m with steel triple action karabiner and scaffold hooks	Twin	R-113	2000164
7012875195	AT010783069	AE529ADJ/8R	Adjustable from 0.75 - 2.0m with stainless steel triple action karabiners on all connections	Single	R-119	R-119

3M™ PROTECTA® P50 Shock Absorbing Webbing Lanyards

SAP ID	Legacy ID	Model #	Description	Single-Leg/ Twin-Leg	Connector 1 (Harness)	Connector 2 (Anchor)
7012888028	AT010621624	1390066A	Adjustable from 0.75 - 2.0m with snap hooks on all connections	Single	2000161	2000161
7012869901	AT010621616	1390065A	Non-adjustable, 2.0m with snap hook and scaffold hooks	Twin	2000161	2000164

Note: All twin tail lanyards are supplied with E839 lanyard stowage points. If a dorsal extension is part of your harness the maximum lanyard assembly permitted is 1.7m or less.

Connectors

3M™ PROTECTA® Personal Self Retracting Lifelines

SAP ID	Legacy ID	Model #	Description	Single-Leg/ Twin-Leg	Connector 1 (Harness)	Connector 2 (Anchor)
7100360099		3100640	1.8m Webbing Lifeline	Single-Leg	2000192	2000161
7100360102		3100647	3.3m Webbing Lifeline	Single-Leg	2000193	2000161



3100640

3M™ PROTECTA® Self Retracting Lifelines

SAP ID	Legacy ID	Model #	Description	Lifeline Connector
7100280390	XF003916442	3590624	6m Galvanised Steel Wire Rope	2000175
7100280391	XF003916434	3590625	10m Galvanised Steel Wire Rope	2000175
7100280603	XF003916418	3590627	15m Galvanised Steel Wire Rope	2000175
7100188807	70007460549	3590610	20m Galvanised Steel Wire Rope	2000175
7100188811	70007460622	3590690	30m Galvanised Steel Wire Rope	2000175
7012819415	70007460382	3590536	10m Stainless Steel Wire Rope	2000126
7012819443	70007466082	3590609	20m Stainless Steel Wire Rope	2000126
7100362174	70804201542	3100651	6.0m Webbing Lifeline	2000161



3590046

3M™ PROTECTA® Leading Edge Self Retracting Lifelines

SAP ID	Legacy ID	Model #	Description	Lifeline Connector
7100318440		3590046	6m Galvanised Cable	2000178
7100318441		3590047	10m Galvanised Cable	2000178
7100318442		3590048	15m Galvanised Cable	2000178
7100318443		3590049	20m Galvanised Cable	2000178

3M™ PROTECTA® Self Retracting Lifelines with Triple Action Karabiner

SAP ID	Legacy ID	Model #	Description	Lifeline Connector
70007460382	70007460382	3590536	10m Galvanised Steel Wire Rope	2000126
7012819443	70007466082	3590609	20m Galvanised Steel Wire Rope	2000126





Descent & Rescue

Thanks to 3M, not only keeping the worker safe, but getting him safely back on terra firma has never been easier with our rescue equipment. We offer the most complete line of safe and effective rescue systems in the industry, trusted by safety professionals and workers globally.

3M™ DBI-SALA® High Capacity Davit

Designed for manhole and confined space entry/retrieval applications. The Davit pivots for ease of rescue and has an adjustment for overhead clearance restrictions. The lower base adjusts to fit most standard entries. A range of bases and masts are available.

Features and Benefits:

Fall Arrest Anchorage

Davits offer 4 x AS/NZS 5532 anchor points

- 2 anchor points for direct connection with fall arrest PPE
- 2 guided cable lifelines from a 3M mounted SRL.

One Front and One Back Cable Lifeline Guide

In addition to being a fall arrest anchorage, the 2 guided cable lifelines serve as:

- Rescue line with a mounted 3M™ DBI-SALA® rescue winch or 3M SRL with built-in rescue winch
- Raising / lowering line for people or load with a mounted 3M™ DBI-SALA® man and load-riding digital winch.

Winch and SRL Options

- Winch and SRL can be mounted on the mast with appropriate bracket.
- **Front or back mounting choice is possible to allow the most convenient positioning for the user**, unlike some others systems that only allow the winch and SRL to be back mounted or allowing only one fixation to the mast.

Adjustable Reach and Height

- Selection of one of the 4 davit mast extension options allows the user to select the best height setting for the operating environment.
- Multiple pins position of the gusset arm and head allows the user to adjust the best reach and height needed for the application.
- Possibility of maximum height of anchorage point is 2.91 m, allowing use over most tanks edges and guardrails.

Base Options

- Fixed bases in galvanized steel or stainless steel are available to accommodate a variety of anchorage locations.
- One short reach and one long reach portable 3 piece base options allow full versatility of the systems.
- Maximum external width of long reach 3 piece base is 2.61 m, allowing the surround of very large confined space openings.



Descent & Rescue

High Capacity 5 Piece Davit Systems

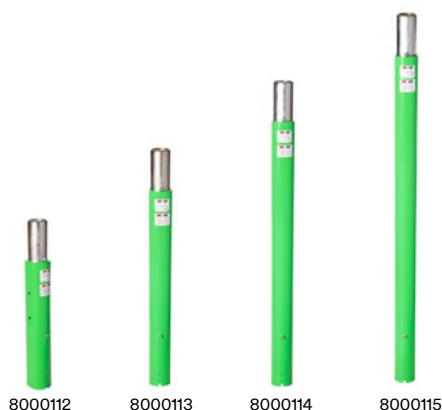
SAP ID	Legacy ID	Model #	Description	Length	Width	Height
7100344313	70804508425	8000132	Short Reach	140cm	121.3-190cm	204.2-254.2cm
7012820394	70804508433	8000133	Long Reach	182.9cm	192.7-261cm	222.3-280.5cm

High Capacity Davit Arms

SAP ID	Legacy ID	Model #	Description	Reach	Height
7012820391	70804508409	8000130	Short Reach Upper Mast Assembly	36-71cm	93-96.5cm
7012820392	70804508417	8000131	Long Reach Upper Mast Assembly	68.9-111.9cm	120.9-133.5cm
7012820390	70804507864	8000129	Long Reach Offset Arm	68.9-111.9cm	N/A
7100313955	70804503509	8000109	Universal Lower Mast Assembly (to suit 8000128 & 8000129)	N/A	TBA

High Capacity Davit Mast Extension

SAP ID	Legacy ID	Model #	Length
7100311253	70804503533	8000112	53.3cm
7100311254	70804503541	8000113	83.8cm
7100311255	70804503558	8000114	114.3cm
7100311256	70804503566	8000115	144.8cm



High Capacity Portable Davit Bases

SAP ID	Legacy ID	Model #	Description	Length	Width
7100311251	70804502295	8000104	3 Piece Short Reach	140cm	121.3-190cm
7100311252	70804502303	8000105	3 Piece Long Reach	182.9cm	192.7-261cm
7100253113	70804503178	8000106	Counterweight with Cart	223.5-299.7cm	239cm
7100311250	70804501883	8000103	Vehicle Hitch Mount	188.4-264.6cm	239cm



High Capacity Davit Bases

SAP ID	Legacy ID	Model #	Description	Material
7100311240	70804498726	8000089	Flush Core Mount	Galvanised Steel
7100311241	70804498734	8000090	Flush Core Mount	Stainless Steel
7100311242	70804498742	8000091	Flush Core Mount with Top Plate	Galvanised Steel
7100311243	70804498759	8000092	Flush Core Mount with Top Plate	Stainless Steel
7100311244	70804498783	8000095	Floor Mount	Galvanised Steel
7100311245	70804498791	8000096	Floor Mount	Stainless Steel
7100311246	70804498825	8000099	Deck Mount	Galvanised Steel
7100311247	70804498833	8000100	Deck Mount	Stainless Steel
7100311248	70804498841	8000101	Wall Mount	Galvanised Steel
7100311249	70804498858	8000102	Wall Mount	Stainless Steel

Descent & Rescue

3M™ DBI-SALA® Tripods

Constructed of lightweight tubular aluminum with a rugged steel head assembly. Quick-release pins positively locate components at all adjustment points for tool-free setup and adjustment.

Features and Benefits:

Mechanical Devices

Supports up to three winches or SRLs for complete flexibility.

Quick-Connect Bracket

Fast and easy attachment of mechanical devices.

Safety Chain

Added support in demanding applications.

Top Mounted Pulley System

Mount up to three pulleys to route mechanical device lifelines.

Secondary Anchor Point

22 kN anchor point for secondary fall arrest system.

Aluminum Construction

Lightweight and durable for ease-of-use.



Aluminium Tripod

SAP ID	Legacy ID	Model #	Height		Spread of Legs (Inside Shoe)		Storage Height
			Minimum	Maximum	Minimum	Maximum	
7100327929	70804204538	8000140	172.7cm	236.2cm	111.8cm	160cm	177.8cm
7100327930	70804204546	8000141	242.3cm	304.8cm	165.1cm	203.4	259cm



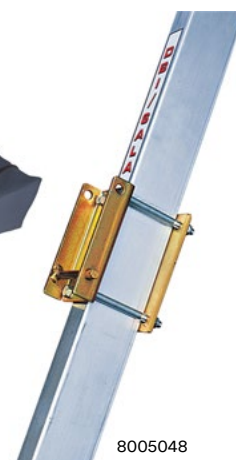
8003205



8003238



9503094



8005048

Aluminium Tripod Accessories

SAP ID	Legacy ID	Model #	Description
7100240883	70007612537	9503094	Tripod Carry Bag to suit 8000140
7100240884	70007612545	9503095	Tripod Carry Bag to suit 8000141
7100240879	70007488649	8003205	Snatch Block Pulley Assembly for use with Tripod Eye Bolt
7100240880	70007488656	8003238	Leg Mount Pulley Bracket for Tripod Leg
7100240881	70007489506	8005048	Mounting Bracket to fit SRL/Winch to Tripod Leg

3M™ DBI-SALA® Advanced Digital Winches



100 Series 2 Speed 4:1 & 9:1

SAP ID	Legacy ID	Model #	Description	Removable Handle	Power Drive
7100204359	70007496816	8518560	18m, 5mm Galvanised Cable	✓	
7100188841	70007496808	8518558	18m, 5mm Stainless Steel Cable	✓	
7100204371	70007496568	8518566	27m, 5mm Stainless Steel Cable	✓	✓
7100204369	70007496840	8518568	27m, 5mm Galvanised Cable	✓	✓

200 Series 2 Speed 4:1 & 9:1

SAP ID	Legacy ID	Model #	Description	Removable Handle	Power Drive
7100204345	70007498192	8518586	42m, 5mm Stainless Steel Cable	✓	✓
7100204349	70007498200	8518587	58m, 5mm Stainless Steel Cable	✓	✓

300 Series 2 Speed 4:1 & 9:1

SAP ID	Legacy ID	Model #	Description	Removable Handle	Power Drive
7100204357	70007498259	8518609	88m, 5mm Stainless Steel Cable	✓	✓

3M™ DBI-SALA® Salalift™ II Winch

SAP ID	Legacy ID	Model #	Description
7100156945	70007489712	8102001	18m, 6mm Galvanised Cable
7100156946	70007491478	8102003	18m, 6mm Stainless Steel
7100188838	70007489746	8102009	27m, 5mm Galvanised Cable
7100204370	70007491486	8102011	27m, 5mm Stainless Steel Cable



3M™ DBI-SALA® Winch Brackets & Accessories

SAP ID	Legacy ID	Model #	Description
7012890845	70007928396	8510207	Winch/SRL Adapter with Flat Back to attach DBI-SALA Winch to structures
7100204062	70007494225	8512936	Overload Protection Clutch, working load of 204kg

Other winch lengths available on request

3M™ DBI-SALA® Emergency Retrieval Sealed-Blok SRL's

Sealed design makes it ideal for working in even the harshest of environments. All Emergency Retrieval Sealed-Blok Self Retracting Lifelines feature an ergonomic integral carrying handle and anchorage karabiner.

Fastline feature provides the user with ability to replace the lifeline in the field.



SAP ID	Legacy ID	Model #	Description	Lifeline Connector	Fastline
7100311852	70007460093	3400955	15m, 5mm Galvanised Cable	2000180	✓
7100239632	70007452025	3400956	15m, 5mm Stainless Steel Cable	2000181	✓
7100313912	70007451720	3400880	25m, 5mm Galvanised Cable	2000180	✓
7100239631	70007459830	3400881	25m, 5mm Stainless Steel Cable	2000181	✓
7012819043	70007460168	3400985	40m, 5mm Galvanised Cable	2000180	✓
7012691257	70007452157	3400986	40m, 5mm Stainless Steel Cable	2000180	✓
7012818995	70804516899	3400897	25m, 5mm Galvanised Cable	2000126	✓
7012818996	70804516907	3400898	25m, 5mm Stainless Steel Cable	2000126	✓
7012819027	70804516915	3400957	15m, 5mm Galvanised Cable	2000126	✓
7012819028	70804516923	3400958	15m, 5mm Stainless Steel Cable	2000126	✓
7012819049	70804516949	3400999	40m, 5mm Stainless Steel Cable	2000126	✓

*triple action versions available on request

3M™ DBI-SALA® Emergency Retrieval Sealed-Blok SRL's Accessories

SAP ID	Legacy ID	Model #	Description
7100260274	70007452256	3401025	Mounting Bracket



3M™ DBI-SALA® Ultra-Lok™ RSQ

Inbuilt dual mode rescue system for assisted rescue utilising the First-Man-Up™ Pole or automatic rescue mode for Self Rescue/Descent.

SAP ID	Legacy ID	Model #	Description	Lifeline Connector
7100310045	70007463279	3504555	15m, 5mm Stainless Steel Cable	2100044



3M™ DBI-SALA® Self-Rescue Device

Work at height without worrying about hanging in your harness for an extended period of time after an arrested fall event. Instead of waiting for help, lower yourself to safety with the 3M™ DBI-SALA® Self-Rescue Device.

Features and Benefits:

- **Easily Accessible Primary Release Cord**
- **Easy-Link SRL Adapter**
A simple, fast connection point for your lanyards or personal SRLs.
- **Moulded Padding**
Protects the bag from wear and tear.
- **Colour-Coded and Reflective Elements**
Provides greater visibility, even in dark situations.
- **Assisted-Rescue and 3M™ DBI-SALA® Rescue Pole**
Allows for remote access and deployment by a colleague.
- **15m-30m Lengths**
More flexibility and freedom to work at height worry-free.
- **15m Training Version**



Rescue Pole

Kit includes bag, rescue pole, carabiner and tagline.
Bag length: 72.4cm
Width: 15.2cm.
Depth: 5.8cm
Weight: 0.907kg
Pole extends to 264cm.



SAP ID	Legacy ID	Model #	Description
7100307006	70804108788	3320051	Self-Rescue Device 15m
7100307007	70804108796	3320052	Self-Rescue Device 30m
7100307008	70804108804	3320053	Self-Rescue Training Device 15m
7100214233	70007650040	8900299	Rescue Pole with Bag

3M™ DBI-SALA® Rollgliss™ R550 Rescue and Descent

Keep rescues simple with one of the lightest, most compact and easy-to-use devices in the industry.

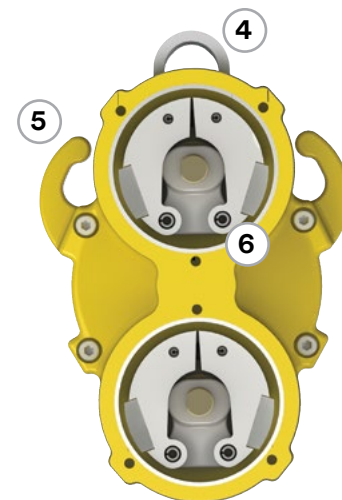
- 1 Drill Adapter**
Provides a mechanical option to raise a victim.
- 2 Cast Aluminum Housing**
Lightweight and extremely durable.
- 3 Bi-Directional Hub**
Brings one hook up as the other goes down, for immediate use after each descent.
- 4 Anchorage**
Provides greater visibility, even in dark situations.
- 5 Integrated Rope Ears**
Greater descent speed control in assisted rescues.
- 6 Dual Brakes**
Added security, safety and peace of mind.
- 7 Durable Rope**
9.5 mm Static Kernmantle Rope.
- 8 Lifeline Hook**
Patented Self-Locking Snap Hook.



Drill adapter



Super-tough nylon makes the rescue wheel lightweight and durable. The ergonomic design provides a better grip and more control.



Multiple Length Options

Lengths between 10 and 150m

Two-Person Capacity

Can be used from heights up to
500 m for one user at
141 kg or 175 m for two users totalling 282 kg

Always be rescue – ready

Be ready for at-height rescues with the 3M™ DBI-SALA® R550 Rescue System

SAP ID	Legacy ID	Model #	Length
7012871992	70007926663	3329020	20m
7012891675	70007940706	3329040	40m
7012908811	70007939146	3329060	60m
7012873021	70007928107	3329100	100m
7012873381	70008283106	3329150	150m



3M DBI-SALA R550 Rescue Units with Triple Action Karabiners

SAP ID	Legacy ID	Model #	Length
7012880745	AT010644899	3329020-75	20m CE with R-113 all ends
7012867108	AT010644907	3329040-75	40m CE with R-113 all ends
7012877213	AT010644915	3329060-75	60m CE with R-113 all ends
7012888008	AT010644923	3329100-75	100m ce with R-113 all ends
7012879864	AT010644949	3329150-75	150m CE with R-113 all end

3M™ DBI-SALA® R550 Remote Rescue Kit with Rescue Hook & Telescopic Pick Pole

SAP ID	Legacy ID	Model #	Length
7012871845	70007941308	1907-0010	10m
7012871611	70007929667	1907-0020	20m
7012892983	70007938387	1907-0040	40m



3M™ DBI-SALA® R550 Escape Units

SAP ID	Legacy ID	Model #	Length
7012878236	70007931325	3328010	10m
7012872287	70008282991	3328020	20m
7012882488	70007940888	3328040	40m
7012883274	70008283007	3328060	60m
7012875369	70008283015	3328100	100m



R550 Rescue Kit Bag

SAP ID	Legacy ID	Model #
1010250127	70804512245	9514746



Micro Pulley

SAP ID	Legacy ID	Model #
7012822152	70804512591	9514753

Cable Grab

SAP ID	Legacy ID	Model #
7012819601	70804512237	5000028

Web Strap Angled Descent

SAP ID	Legacy ID	Model #
7012816929	70007668604	1200207

Heavy Duty Telescopic Pole with Bag

SAP ID	Legacy ID	Model #
7012879483	70007926853	8900031



RA Edge Protector - Gen 2

SAP ID	Legacy ID	Model #
7012818868	70804512401	3320046



Web Grab

SAP ID	Legacy ID	Model #
7100316906	70804514274	5000032



Humidity Case

SAP ID	Legacy ID	Model #
7100246539	70007627741	9508289



Scaffold Hook

SAP ID	Legacy ID	Model #
7100314888	70007781860	AJ527



R550 Rescue Kit

SAP ID	Legacy ID	Model #
7100231777	70804512252	3300005



Descent & Rescue

3M™ DBI-SALA® Rescue Positioning Device Kit

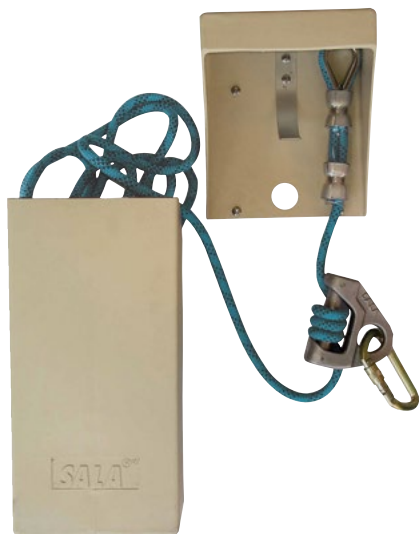
Simple yet extremely reliable rescue or positioning system designed to raise and/or lower yourself or someone else, providing a stable way to reach a working level, even in tight space.



SAP ID	Legacy ID	Model #	Length	M/A
7100188849	70007466363	3600050	15m System	3:1
7100188850	70007466397	3600100	30m System	3:1

3M™ DBI-SALA® Self Rescue Descender System (SRD)

All SRD kits include: descender, kernmantle rope, karabiner (SRD1 series), hammerlok with snap hook (SRD2 series), U bolt, storage/ deployment box, tracer wire with R-clip, spacer and certification tag.



SAP ID	Legacy ID	Model #	Description
7012892379	70007942017	SRD1-20	20 m system, SRD1 series
7012925797		SRD1-25	25 m system, SRD1 series
7012868609		SRD1-30	30 m system, SRD1 series

M/A = Mechanical Advantage

3M™ DBI-SALA® Rollgliss® Karabiners



2000117

SAP ID	Legacy ID	Model #	Description	Gate Strength	Gate Opening
7100209336	70007925079	2000117	Medium Offset D, Stainless Steel double action autolock	16kN	20mm
7012913508	70007449591	8700130	Medium Parabiner, Aluminium double action autolock	16kN	19mm

Descent & Rescue

3M™ DBI-SALA® Rollgliss™ Rescue Ladder



294

SAP ID	Legacy ID	Model #	Description
7012595692	70007494928	8516294	2.4 m, includes 3 connecting karabiners
7012595693	70007494951	8516316	Anchorage plate for mounting ladder to a davit arm or anchorage point

3M™ DBI-SALA® Spreader Bar



SAP ID	Legacy ID	Model #	Description
7012892462	70007926135	E522-SB1	Spreader bar with double action karabiner connections
7012916900	70007936308	E522-SB3	Spreader bar with triple action karabiner connections

Descent & Rescue

3M™ Protecta® Tripod & Confined Space Kits



SAP ID	Legacy ID	Model #	Description
7012877410	70007932364	AM100	Tripod, 1.4 - 2.4m
7012882972	70007936274	AA600AU	With Personnel Winch, includes: AM100 tripod, AT200/I20 Winch, AK0100 bag, mounting bracket and pulley
7012877185	70007940581	AA610AU	With Type 3 SRL, includes: AM100 tripod, 3591002 Type 3 retrieval SRL, AK0100 bag, mounting bracket & pulley

3M™ Protecta® Confined Space Accessories



SAP ID	Legacy ID	Model #	Description
7012791748	70007780078	AT052/1	Pulley with karabiner for use on tripod
7100230834	70007464897	3590498	Fixing bracket for 3591002 retrieval SRL
1010262727	70007932380	AK0100	Tripod Bag
7100220244	70007635736	AK020A1	Pulley
7100309559	70007464905	3590499	Mounting bracket for Protecta Winch 3591002 when attaching to a DBI-SALA tripod or davit

3M™ Protecta® Confined Space Retrieval Self Retracting Lifeline



SAP ID	Legacy ID	Model #	Description
7100230836	70007466314	3591002	Galvanised cable, 15 m*

*When ordering the Retrieval Fall Arrest SRL for use with the Tripod, order the AT052/1 pulley and the 3590498 fixing bracket.

3M™ Protecta® Confined Space Rescue Winch



SAP ID	Legacy ID	Model #	Description
7012791749		8100024	Automatic locking system, 20 m**

**When ordering the Rescue Winch for use with the Tripod, order the AT052/1 pulley. Alternatively order the complete system, part no. AT200/I20/P

3M™ Fall Protection Accessories



E831



G029-10



9501403



1150414



8700225



RFID retrofit tags are also available for use on all brands of harnesses, lanyards, self-retracting lifelines or other equipment such as gas detectors, tools, ladders & fire extinguishers that require inspection.

SAP ID	Legacy ID	Model #	Description
7012867204	70007930715	E810-DUAL	Yoke Harness Extension, dual, for rescue
7012871411	70007933834	E810-SINGLE	Yoke Harness Extension, single, for rescue
7012866924	70007925780	E831	Dorsal Extension, retrofit
7100270183	70007925004	1500132	Utility Tool Pouch, Canvas, White
7100309978	70007424396	1150414	Suspension Seat, for use with any brand/style of harness
7012913507	70007925137	9501403	Suspension Trauma Straps
	70007939138	AK066AU-BKP	Roofers Kit Backpack
7012888041	70007947529	G029-10	Harness Storage Bag
7012913512	70007931341	8700225	Storage Bag 25 L, yellow, small - fits approx. 50 m x 11 mm or 25 m x 13 mm rope



Fall Protection for Tools

From construction sites to oil rigs, 3M™ DBI-SALA® Fall Protection for Tools makes work environments safer and more productive by drastically reducing falling object incidents that can result in personal injury, equipment damage, and tool loss.

3M™ DBI-SALA® Attachment Points

Image to Scale

D-Rings

- D-rings can be attached to virtually any tool under 2.3 kg or 0.9 kg using our Quick-Wrap Tape
- Creates an attachment point in less than a minute.
- Dual D-rings allow for 100% tool tie-off during tool transfers.



SAP ID	Legacy ID	Model #	Description	Load Rating	Quantity	Non-Conductive
7100210210	70007448841	1500007	D-ring 1" x 3.5" (2.5 cm x 8.9 cm)	2.3kg	10 Pack	No

Heavy Duty Quick-Wrap Tape

- Heavy duty 2.5 cm wide tape conforms to the shape of whatever it is applied to.
- Used with our D-Rings and Tool Cinch Attachments to create instant tethering points on virtually any tool.
- Made from a self-fusing silicone rubber that leaves no adhesive or residue behind.
- Inner fiberglass webbing increases the strength of the tape and makes the tape resistant to sharp objects.



SAP ID	Legacy ID	Model #	Description	Quantity	Length
7100204330	70804436924	1500174	Quick wrap, yellow	1	2.743m
7100217304	70804440223	1500175	Quick wrap, yellow	10	2.743m

D-Ring Cord

- Easily clinches to tools, simply pass the loop end of a D-Ring Cord through a pre-drilled hole or closed handle to create an attachment point.
- Extremely durable and reusable.



SAP ID	Legacy ID	Model #	Description	Load Rating	Quantity
7100214245	70007448858	1500009	D-ring cord	2.3kg	10 Pack

3M™ DBI-SALA® Tethers & Lanyards

Bungee Tethers

Built to be more durable and longer-lasting than the competition, our bungee tethers are third-party load rated and thoughtfully designed to prevent dropped objects.



1500047



1500049

SAP ID	Legacy ID	Model #	Description	Load Rating	Length (relaxed)	Length (stretched)
7100209333	70007449047	1500047	Hook2Loop Bungee Tether	6.8kg	81.3cm	119.4cm
7100230432	70007449054	1500048	Hook2Loop Bungee Tether (10 pack)	6.8kg	81.3cm	119.4cm
7100209334	70007449062	1500049	Medium-Duty Hook2Loop Bungee Tether	15.9kg	78.7cm	132.1cm



1500159

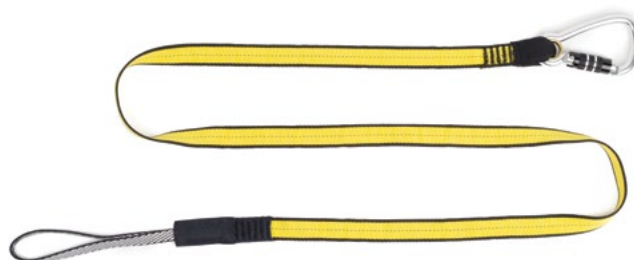


1500178

Coil Tethers

Easy to clean and out of the way—exactly what a tether should be. The lightweight vinyl construction and ultra-compact design of our Coil Tethers makes them an ideal alternative to classic bungee tethers.

SAP ID	Legacy ID	Model #	Description	Load Rating	Length (relaxed)	Length (stretched)
7100214242	70804431230	1500159	Hook2Hook Coil Tether with Swivel	2.3kg	100cm	157.5cm
7100214240	70804486085	1500178	Hard Hat Tether	1.8kg	10cm	90cm



1500050

Tool Lanyards

SAP ID	Legacy ID	Model #	Description	Load Rating	Length
7100258131	70007449070	1500050	Medium-Duty Hook2Loop Lanyard	15.9kg	182.9cm

3M™ DBI-SALA® Tool Holsters

Single and Dual Tool Holsters

- Single and Dual Tool Holsters are equipped with D-rings that are load rated for 2.3 kg.
- Several variants of these holsters come with Retractors (indicated below). Retractors are load rated for 0.7 kg.
- Single and dual tool holsters feature High-Visibility Reflectors and the Magnetic Tool Staging System.
- A bottom drain vent allows the holster to perform even in wet conditions.

SAP ID	Legacy ID	Model #	Description	Retractors included	Attachment
7100311721	70007449328	1500102	Single Tool Holster with Retractor	1x	Belt
7100230430	70007439006	1500107	Dual Tool Holster with Retractors	2x	Belt



1500107

1500102



Scaffold Wrench Holsters

- Quickly holster scaffold wrenches while working at height.
- Features High-Visibility Reflectors.

Back of holster features pouch for Safety Retractor 1500069. Rear feed system allows retractor to tie off a scaffold wrench while staying out of the way.

SAP ID	Legacy ID	Model #	Description	Retractors included	Tether included	Attachment
7100314283	70007438933	1500097	Scaffold Wrench Holster with Retractor and Hook2Loop Bungee Tether	1	1500047	Belt



Fall Protection for Tools

Hammer Holsters

- The Hammer Holster allows for the safe holstering of virtually any hammer under 5 lb (2.3 kg).
- D-ring on the side of the holster is load rated for 2.3 kg.
- The 1500094 combo comes with a 1500065 Hook2Quick Ring Coil Tether that is specially designed for use with the Hammer Holster. The Hook2Quick Ring Coil Tether is load rated for 2 lb (0.9 kg).
- During transport, the Hammer Holster can be locked shut with a hook and loop strap. While being used, the strap can be locked up allowing for easy hammer access and holstering.



Top: Hammer Holster is locked, preventing hammer from slipping out.
Bottom: Hammer Holster is unlocked, making it suitable for active use.

SAP ID	Legacy ID	Model #	Description	Tether included	Attachment
7100314287	70007449302	1500094	Hammer Holster & Hook2Quick Ring Coil Tether	1500065	Belt

Radio Holster

- Holster adjusts to fit virtually any hand-held radio, cell phone, and many other devices.
- Can be worn from belt or harness.
- A Micro D-Ring can be placed on the back of a device, and can then be tethered to a D-ring on the front of the
- Adjustable Radio Holster using a 1500065 Clip2Loop
- Coil Tether.



Can be worn from a belt or harness.



SAP ID	Legacy ID	Model #	Description	Retractors included	Attachment
7100157155	70007438891	1500089	Adjustable Radio Holster, Clip2Loop Coil Tether and Micro D-Ring	1500060	Universal

3M™ DBI-SALA® Tool Pouches

Utility and Inspection Pouches

- Features two outside pockets for storing spud wrenches and two inner pockets for storing additional tools.
- Tools can be tethered to D-rings on the inside and outside of the pouch.
- Adjustable side-release closure system helps prevent objects from falling out when the pouch isn't being used.



SAP ID	Legacy ID	Model #	Description
7100270183	70007449484	1500132	Utility Pouch with adjustable side-release closure system

Small Parts Pouches

- Innovative self-closure system traps objects inside, making it nearly impossible for objects to fall out once placed in the bag.
- Easy to retrieve objects since no opening or closing is necessary.
- Compatible with most tool belts; belt loops located on back of pouch.



SAP ID	Legacy ID	Model #	Description
7100157156	70007449443	1500123	Small Parts Pouch, extra deep canvas black
7100156938	70007439055	1500119	Small Parts Pouch, canvas black

Standard Safe Bucket

- Built-in connection points.
- High-quality canvas load rated for 45.4 kg, and vinyl load rated for 113.4 kg.
- Integrated carabiner and hoisting strap.
- Puncture resistant.



SAP ID	Legacy ID	Model #	Load Rating	Closure System	Body material	Height/diameter	Capacity
7100209335	70007439121	1500134	45.4kg	Hook and Loop	Canvas	38cm/31.75cm	4673.6cm³
7100241957	70007439162	1500140	113.4kg	Hook and Loop	Vinyl	38cm/31.75cm	4673.6cm³



Closure systems

Every Safe Bucket features either a unique, patent-pending drawstring or a locking hook and loop closure system that acts as an extra layer of spill-protection during transport and lifting. Colourful indicator tabs provide quick visual cues to indicate whether the bucket is in lockdown mode or easy-access mode.

3M™ DBI-SALA® FlexiGuard™ Solutions.



C-Frame rail fall arrest system.

A versatile system designed to be moved manually or with the use of a tow bar and service vehicle to provide safe access, horizontal movement and total fall protection on or near sensitive equipment for up to two users.



A-Frame rail fall arrest system.

A secure anchor point in a portable structure giving the worker increased coverage and protection. Ideal solution for a workshop environment where space is limited. System is designed to be moved manually, provides horizontal movement and total fall protection for up to two users.



Ladder fall arrest system.

Adjustable in height that provides easy access to elevated work areas of different heights such as fuselage, wing and general maintenance areas with fall protection from the ground up for multiple users, for the duration of the work being performed.



Portable tanker access ladder system - fall arrest.

The Portable Tanker Access Ladder System (PTALS) provides easy access to elevated work areas with fall arrest rated tie-off for one operator from the ground up for the duration of the work being performed. System configurations may include but not limited to guardrails, SRL's or confined space entry equipment.

Speciality Systems



Counterweight rail fall arrest system.

Designed as a versatile solution to provide an overhead anchor point for up to two users while working at heights. These systems are designed to be counterbalanced by concrete allowing for close positioning to the work surface without obstructing the equipment being accessed.



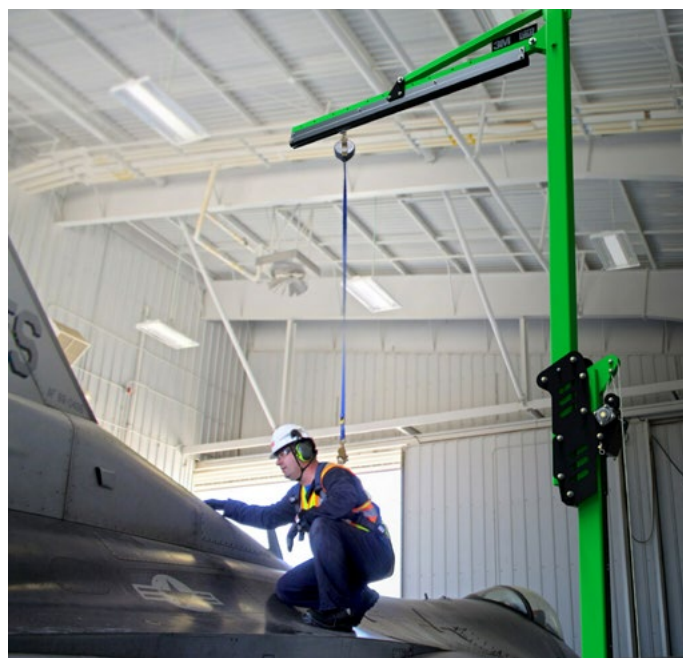
Portable tanker access ladder system - work positioning.

The Portable Tanker Access Ladder System (PTALS) combines easy access to elevated work areas with fall protection and work positioning for one operator for the duration of the work being performed. System configurations may include but not limited to guardrails or confined space entry equipment.



M100 & M200

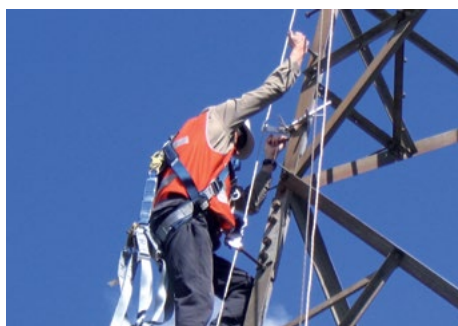
Get the coverage you need with this versatile new fall protection system. Available in both the M100 and M200 Series, the 3M™ DBI-SALA® Flexiguard™ Modular Jib System features a simplified design that enhances worker safety in multiple applications. Increased rail-length configurations improve working coverage while a new design facilitates easier system transport.



Each FlexiGuard solution is driven by our customers' needs and is dependent on the industry, environment and specific design constraints, including government standards. For complete peace of mind DBI-SALA's FlexiGuard Access Systems offer a complete solution that is ready to use.

Due to the technical nature of all these speciality systems and applications, a degree of customisation is required. Please contact 3M Fall Protection for more information.

Comprehensive training, when and where you need it



We've got your back

3M Fall Protection is dedicated to bringing workers home safely. Our focus drives us to design and manufacture the safest possible height safety gear.

We understand the industries we serve and listen to the workers in the field. We employ engineers to create innovative solutions and patent the products that keep workers safe at heights around the world. 3M Fall Protection offers its customers the quality products, expertise and service of the trusted 3M™ DBI-SALA® and 3M™ Protecta® Fall Protection Brands.

We take an innovative approach in bringing our products to the field. We have created international partnerships and a vast network of authorised distributors, certified installers and service centres. 3M Fall Protection is one of the world's leading manufacturers of fall protection and rescue equipment, with decades of experience and a legacy of innovation. Look for complete solutions in our extensive range of DBI-SALA® and Protecta® brands.

“Dedicated to bringing every worker at height home safely”



Fall Protection
Australia
Website



Fall Protection
New Zealand
Website



Fall Protection
Demo Trailer



Contact Us

Inspection reporting service.

Is your site safe to work at height?

- The law requires that you provide a safe work environment for staff, visitors and contractors.
- How long has it been since your last site inspection?
- Do you have a workable rescue plan?

One of the biggest challenges facing many companies is understanding where the working-at-height risks exist on site and the types of measures that can be taken to minimise them.

Our trained technicians will develop a thorough report, making recommendations that employ worlds best practice regarding fall protection in your workplace.

Contact your Regional Sales Manager or our Customer Service Centre on:

1800 445 867 (AUS),
0800 212 505 (NZ).

to book your site inspection or for more information.

Are you looking for more?

- New Products
- Full Product Range
- Glossary (fall protection terminology)
- Instruction Manuals
- Technical Bulletins
- Find your local Sales Manager
- Safety References
- Product Images
- Find a certified Installer
- Find your local distributor
- Detailed Product Specifications
- Fall Distance Calculations

It's all available at
3M.com.au/ppesafety

**3M Australia Pty Ltd**

Bld A, 1 Rivett Road
North Ryde, NSW 2113
Customer Services: 1300 363 565
Email: 3msupport.safety.au@mmm.com
3M.com.au/ppesafety

3M New Zealand Limited

94 Apollo Drive
Rosedale, Auckland 0632
Customer Services: 0800 252 627
Email: 3msupport.safety.nz@mmm.com
3M.com/nz/ppesafety