

3MSM Health Care Academy

Replacement of an all-ceramic crown featuring dual-arch impression tray technique.

Clinical dentistry and photography by: Dr Gunnar Reich, Munich, Germany
Lab work by: MDT Nicole Freund, Tutzing, Germany

About the case

Patient with a chipped all-ceramic crown on second molar: Impression made with 3M™ Impregum™ Super Quick Polyether Impression Material (Medium and Light Body) using the dual-arch bite impression technique.



Figure 1: Initial situation: Patient arrived with a largely chipped veneered zirconia crown on second lower molar.



Figure 3: For single-unit indications, the dual-arch bite impression technique is a viable alternative to full-arch impressions. 3M™ Impregum™ Super Quick Light Body Polyether Impression Material was applied using 3M™ Intra-oral Syringe Purple.

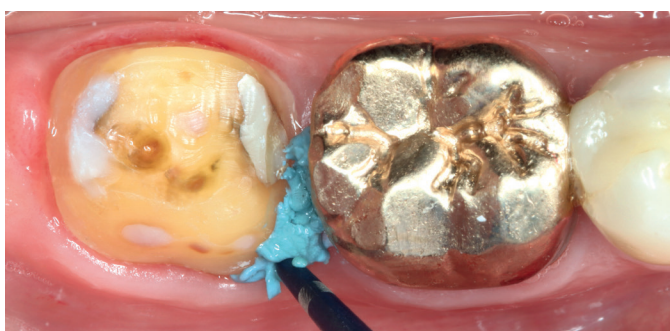


Figure 2: 3M™ Astringent Retraction Paste was used for moisture management and slight displacement of gingiva.

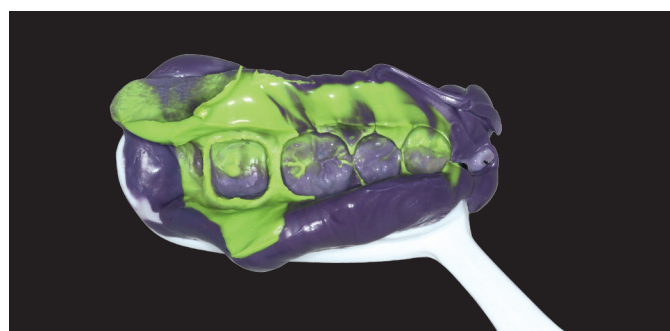


Figure 4: In parallel, the tray was loaded with 3M™ Impregum™ Penta™ Super Quick Medium Body Polyether Impression Material. The impression was done in the dual-arch bite (closed mouth) impression technique.



Figure 5: Final situation: Precisely fitting monolithic 3M™ Lava™ Esthetic Fluorescent Full-Contour Zirconia restoration in situ. The crown was cemented with 3M™ RelyX™ Unicem 2 Self-Adhesive Resin Cement.

Contact 3M

3M Health Care Academy

Australia

3M.com.au/dental

New Zealand

3M.co.nz/dental



Scientific Affairs

Stephen Langdon

Email: sdlangdon@mmm.com

Janice Pitt

Email: jpitt3@mmm.com

3M Oral Care

3M Australia Pty Limited
Building A, 1 Rivett Road
North Ryde, NSW 2113
Ph: 1300 363 454
www.3M.com.au

3M New Zealand Limited
94 Apollo Drive
Rosedale, Auckland 0632
Ph: 0800 80 81 82
www.3M.co.nz



Find us on Facebook

Published by 3M oral Care. 3M, “3M Science. Applied to Life.”, Impregum, Lava, Penta and RelyX are trademarks of 3M. 3M Health Care Academy is a service mark of 3M. Please recycle. © 3M 2018. All rights reserved.

Please always follow the Instructions for Use (IFU) and refer to the IFU for full indications, precautions and warnings.

Dr Reich has received an honorarium from 3M Oral Care.