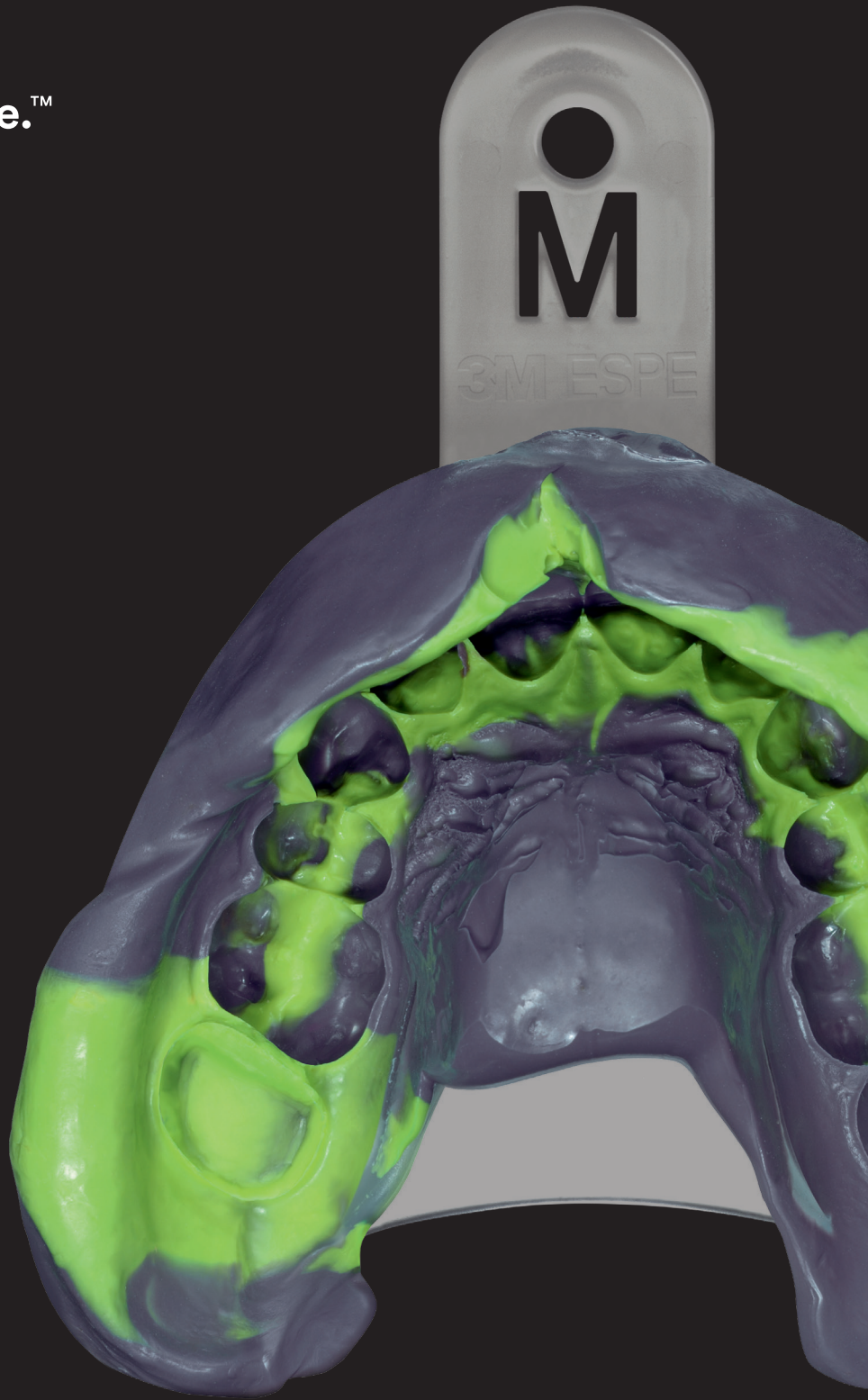


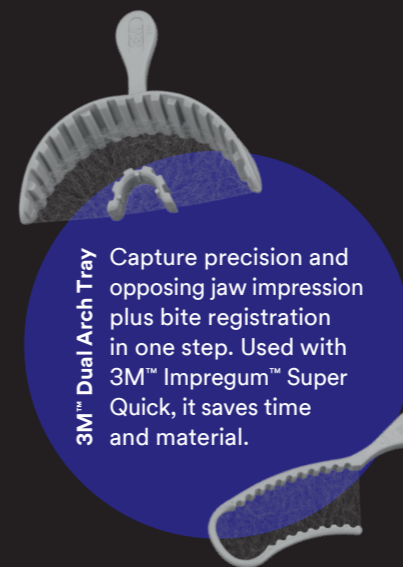
3M Science.
Applied to Life.™



3M™ Impregum™
Polyether Impression Material

**Turns every challenge
into a simple case.**

The fastest way to polyether precision for smaller cases. 3M™ Impregum™ Super Quick.



3M™ Dual Arch Tray
Capture precision and opposing jaw impression plus bite registration in one step. Used with 3M™ Impregum™ Super Quick, it saves time and material.



Impregum Polyether Impression Material has always been the trusted solution for complex situations and implants.

So wouldn't it be great if you could get that same outstanding impression accuracy and detail reproduction even in single-unit cases? To ensure that the highest demands are fulfilled without limiting productivity, we created Impregum Super Quick Polyether Impression Material.

Impregum Super Quick Material combines the outstanding performance and reliability of a polyether with the speed of a VPS. Deep margins and moist environments will no longer slow you down.



Trusted precision. Quicker set.

So fast, so good: With just two minutes setting time the new "Super Quick" material allows for faster impressions in less complex cases like single-unit crowns, implants, inlays/onlays and smaller bridges up to 3 units.



Formulated for success.

A true polyether with a brand new formulation that results in a superfast setting reaction and better taste.



Make your patients feel comfortable.

An improved fresh, minty taste together with a short time in the mouth significantly increases your patients comfort.

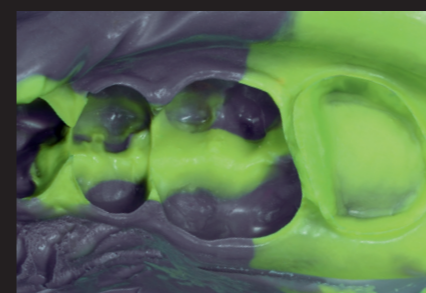


Polyether meets CAD/CAM workflow.

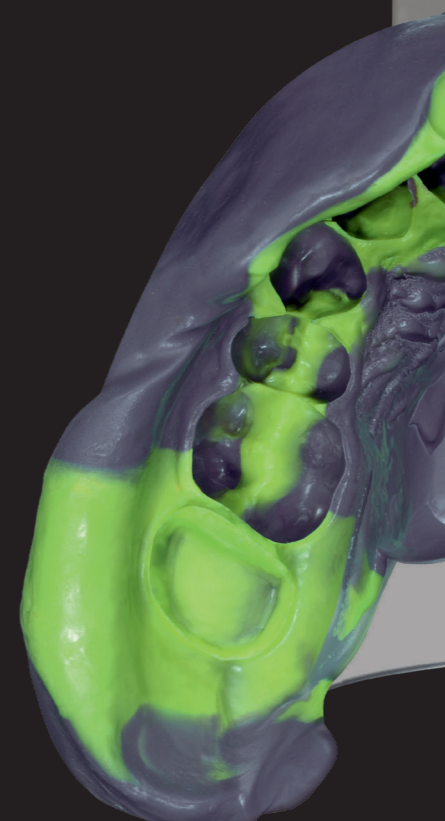
Impregum Super Quick Material is scannable with the current generation of scanners for a more efficient cooperation with your lab.



Syringing of 3M™ Impregum™ Super Quick Light Body Impression Material using the 3M™ Intra-oral Syringe Purple.

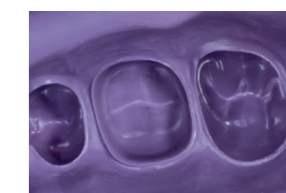


Contrasting colours for excellent readability.



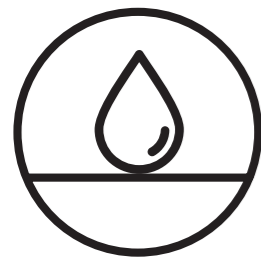
3M™ Impregum™ Super Quick

- Superfast polyether with 45 sec. working time and quick 2-minute setting
- Available in heavy, medium and light body consistencies
- For monophasic and 1-step impression techniques
- Perfect for impressions for single-unit crowns, implants, inlays/onlays and smaller bridges up to 3 units



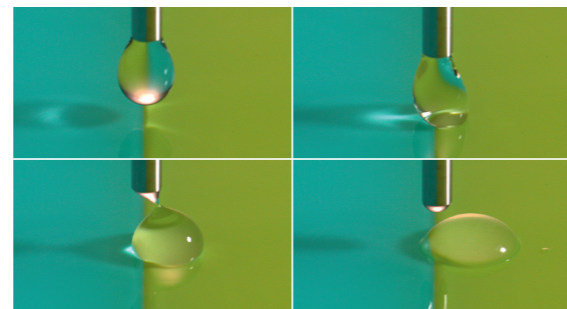
3M™ Impregum™ Polyether Material.

Proven benefits for accuracy you can trust.

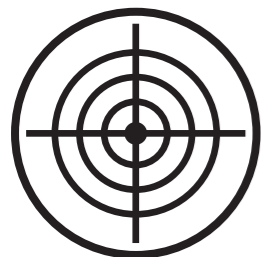


Moisture? So what!

With its outstanding moisture tolerance, Impregum Polyether Material displaces blood and saliva right from the first contact with tissue, leading to excellent, void-free detail reproduction. This is especially beneficial in subgingival cases.*



3M™ Impregum™ Polyether Material's surface is intrinsically hydrophilic, so it makes immediate contact with moist teeth and tissue. This test shows: The water droplet is attracted to 3M™ Impregum™ Super Quick Material, the material with the higher hydrophilicity (right) and moves immediately toward that material.



Exceptional precision.

The excellent flow properties of Impregum Polyether Material let you capture the finest details: It flows smoothly, even in the toughest spots, producing void-free impressions with excellent precision.

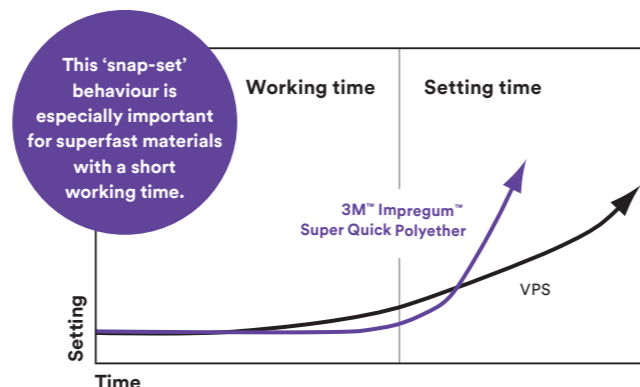


3M™ Impregum™ Polyether Material flows in close proximity to the teeth and gingival tissues to capture every important detail.

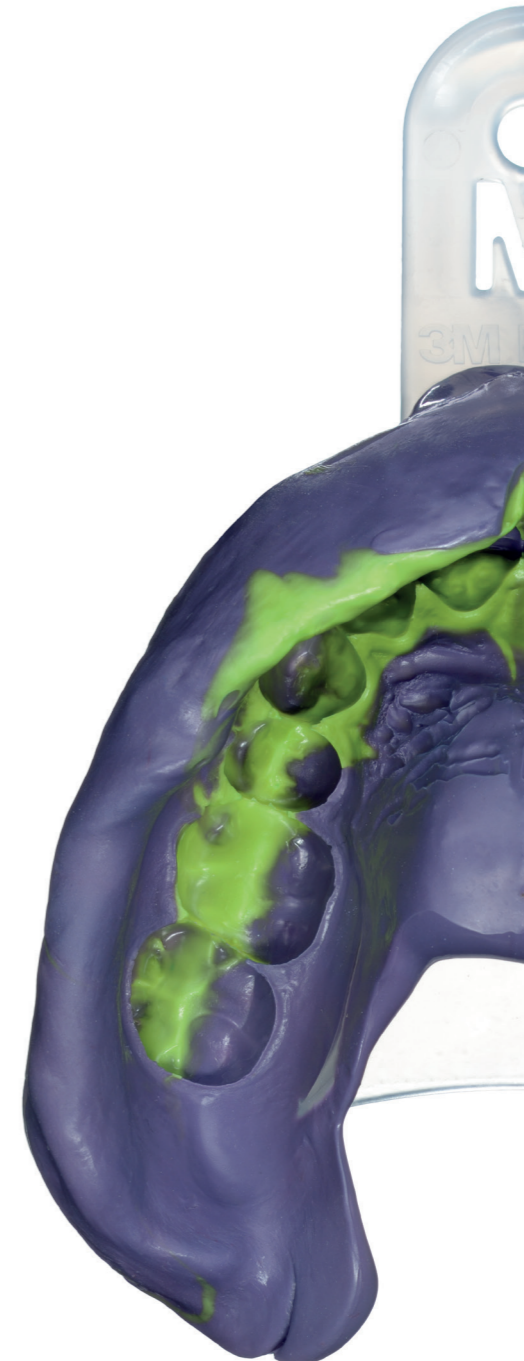


Take all the time you need.

Whether you use super quick, quick or regular set, Impregum Polyether shows consistently great flow behaviour so you can use the indicated working time reliably to full capacity – inaccuracies associated with premature setting are avoided. Once the working time is over, setting starts immediately (snap set) for better reproduction of details and fewer distortions.



In contrast to VPS materials, polyether shows a consistent flow throughout working time followed by immediate setting (schematic illustration).



Confidence

A trusted brand that means a great experience for everyone involved.

- Save time with outstandingly precise impressions on the first take.
- Increase efficiency for you and your lab by reducing remakes and adjustments.
- Improve patient comfort.

HIGHLY SATISFIED

A clinical evaluation shows a very high satisfaction rate of almost **95%** regarding the precision of 3M™ Impregum™ Super Quick Material impressions and the fit of the final restorations.



*3M internal data on file.

Source: 3M field evaluation with 447 participants from Europe and the U.S., 2017.

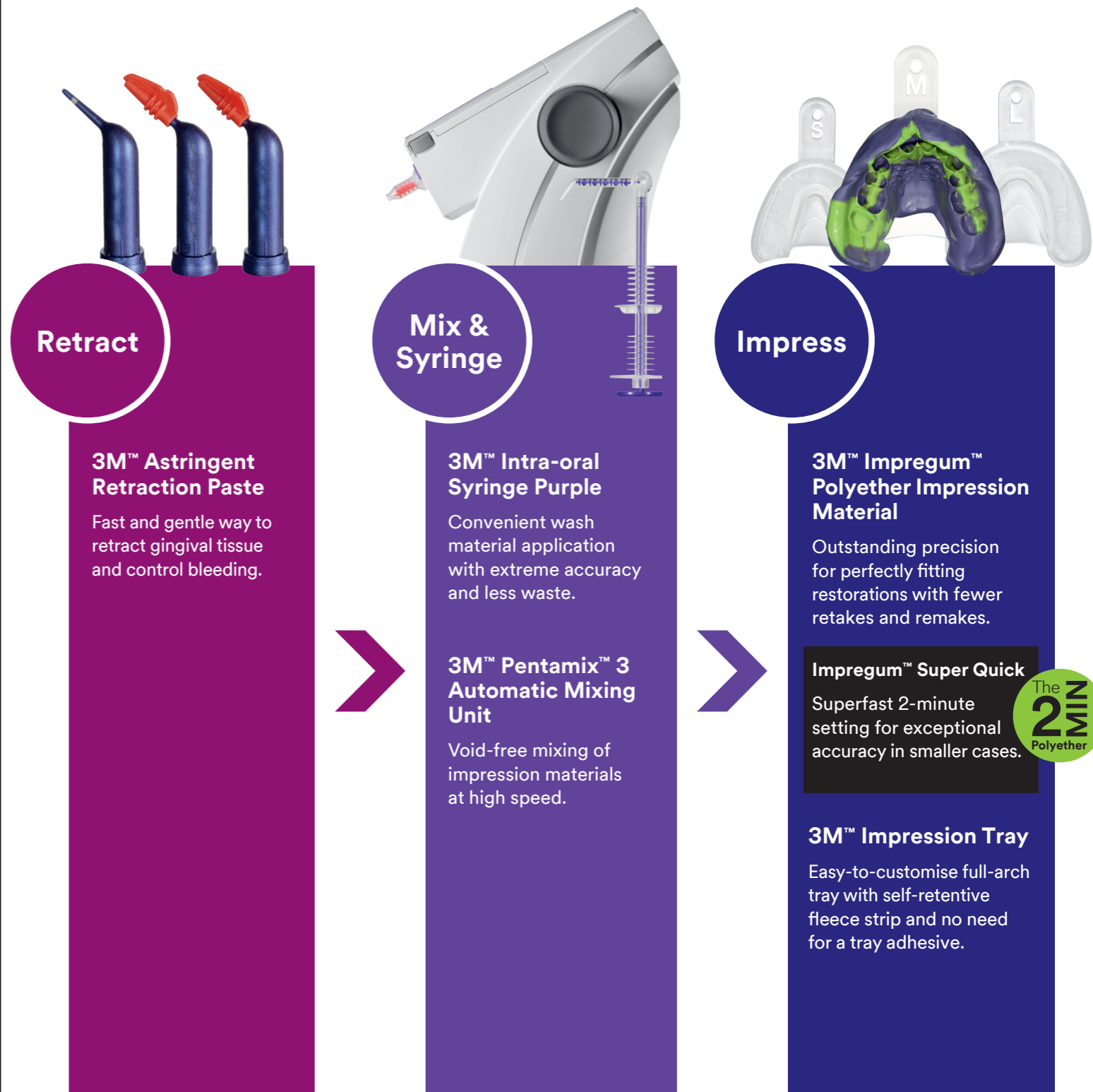
For more predictable, precise and convenient impressions.

Always the right choice, whatever your indication and preferred technique.

Indications	Impression technique	Single-unit crown	Small implant (≤ 2 units)	Inlay/onlay (≤ 2 units)	Small bridge (≤ 3 units)	Veneers	Bridge (> 3 units)	Implant (> 2 units)	Pick-up impression	Functional impression
Super Quick Setting Materials										
3M™ Impregum™ Penta™ Super Quick (Medium Body)	Monophase or 1-step									
3M™ Impregum™ Penta™ Super Quick (Medium or Heavy Body)	1-step	✓	✓	✓	✓					
3M™ Impregum™ Super Quick (Light Body)										
Quick Setting Materials										
3M™ Impregum™ Penta™ Soft Quick (Medium Body)	Monophase or 1-step									
3M™ Impregum™ Penta™ H DuoSoft™ Quick (Heavy Body)	1-step	✓	✓	✓	✓	✓				
3M™ Impregum™ L DuoSoft™ Quick (Light Body)										
Regular Setting Materials										
3M™ Impregum™ Penta™ Soft (Medium Body)	Monophase or 1-step									
3M™ Impregum™ Penta™ H DuoSoft™ (Heavy Body)	1-step									
3M™ Impregum™ Penta™ L DuoSoft™ (Light Body)		✓	✓	✓	✓	✓	✓	✓	✓	
3M™ Impregum™ Garant™ L DuoSoft™ (Light Body)										
3M™ Impregum™ Penta™ (Medium Body)	Monophase									



All you need to simplify impression-taking.





	Order codes	Dispensing system	Viscosity low high	Impression technique	Recommended max. working time (min:sec)	Intra-oral setting time at 37°C (min:sec)
Super Quick Setting Materials						
3M™ Impregum™ Penta™ Super Quick (Heavy Body)	69406			1-step	0:45	2:00
3M™ Impregum™ Penta™ Super Quick (Medium Body)	69385			Monophase or 1-step	0:45	2:00
3M™ Impregum™ Super Quick (Light Body)	69379			1-step	0:45	2:00
Quick Setting Materials						
3M™ Impregum™ Penta™ Soft Quick (Heavy Body)	31769			1-step	1:00	3:00
3M™ Impregum™ Penta™ Soft Quick (Medium Body)	31765			Monophase or 1-step	1:00	3:00
3M™ Impregum™ Soft Quick (Light Body)	31767			1-step	1:00	3:00
Regular Setting Materials (Setting time from start of mixing 6:00 min)						
3M™ Impregum™ Penta™ H DuoSoft™ (Heavy Body)	31740			1-step	1:45	4:15
3M™ Impregum™ Penta™ Soft (Medium Body)	31730			Monophase or 1-step	1:45	4:15
3M™ Impregum™ Penta™ (Medium Body)	31644			Monophase	1:45	4:15
3M™ Impregum™ Penta™ L DuoSoft™ (Light Body)	31745			1-step	1:45	4:15
3M™ Impregum™ Garant™ L DuoSoft™ (Light Body)	31751			1-step	1:45	4:15

Ordering information

Item no. Product information

	Upgrade Kits
2 MIN 69404	3M™ Impregum™ Penta™ Super Quick MB 1 base paste MB – 300 mL, 1 catalyst MB – 60 mL, 10 3M™ Penta™ Mixing Tips – Red
2 MIN 69411	3M™ Impregum™ Penta™ Super Quick HB/LB 1 base paste MB – 300 mL, 1 catalyst MB – 60 mL, 1 cartridge LB – 50 mL, 10 3M™ Penta™ Mixing Tips – Red, 5 3M™ Intra-oral Syringes Purple, 5 3M™ Garant™ Mixing Tips purple, 5 3M™ Garant™ Intra-oral Tips white
	Introductory Kits for 3M™ Pentamix™ 3 Automatic Mixing Unit
2 MIN 69414	3M™ Impregum™ Penta™ Super Quick MB 1 base paste MB – 300 mL, 1 catalyst MB – 60 mL, 13M™ Penta™ Cartridge MB, 10 3M™ Penta™ Mixing Tips – Red, 13M™ Penta™ Elastomer Syringe, 1 Polyether Tray Adhesive – 17 mL, 3M™ Astringent Retraction Paste capsules, 6 3M™ Dual Arch Trays
2 MIN 69415	3M™ Impregum™ Penta™ Super Quick MB/LB 1 base paste MB – 300 mL, 1 catalyst MB – 60 mL, 2 cartridges LB – 50 mL each, 13M™ Penta™ Cartridge MB, 10 3M™ Penta™ Mixing Tips – Red, 5 3M™ Intra-oral Syringes Purple, 5 3M™ Garant™ Mixing Tips purple, 5 3M™ Garant™ Intra-oral Tips white, 1 Polyether Tray Adhesive – 17 mL, 3 3M™ Astringent Retraction Paste capsules, 6 3M™ Dual Arch Trays
2 MIN 69407	3M™ Impregum™ Penta™ Super Quick HB/LB 1 base paste MB – 300 mL, 1 catalyst MB – 60 mL, 2 cartridges LB – 50 mL each, 13M™ Penta™ Cartridge HB, 10 3M™ Penta™ Mixing Tips – Red, 5 3M™ Intra-oral Syringes Purple, 5 3M™ Garant™ Mixing Tips purple, 5 3M™ Garant™ Intra-oral Tips white, 1 Polyether Tray Adhesive – 17 mL, 3 3M™ Astringent Retraction Paste capsules, 6 3M™ Dual Arch Trays
P31734	3M™ Impregum™ Penta™ Soft MB 1 base paste – 300 mL, 1 catalyst – 60 mL, 13M™ Impregum™ Penta™ Soft Cartridge, 10 3M™ Penta™ Mixing Tips – Red, 1 3M™ Penta™ Elastomer Syringe, 1 Polyether Tray Adhesive – 17 mL
P31684	3M™ Impregum™ Penta™ MB 1 base paste – 300 mL, 1 catalyst – 60 mL, 13M™ Impregum™ Penta™ Cartridge, 10 3M™ Penta™ Mixing Tips – Red, 1 3M™ Penta™ Elastomer Syringe, 1 Polyether Tray Adhesive – 17 mL
P31771	3M™ Impregum™ Penta™ Soft Quick Step MB 1 base paste – 300 mL, 1 catalyst – 60 mL, 13M™ Penta™ Cartridge MB, 1 3M™ Penta™ Elastomer Syringe, 10 3M™ Penta™ Mixing Tips – Red, 1 Polyether Tray Adhesive – 17 mL
P31738	3M™ Impregum™ Penta™ H DuoSoft™ HB/LB 1 base paste – 300 mL, 1 catalyst – 60 mL, 13M™ Impregum™ Penta™ H DuoSoft™ Cartridge, 10 3M™ Penta™ Mixing Tips – Red, 2 3M™ Impregum™ Garant™ L DuoSoft™ Cartridges – 50 mL each, 1 cartridge dispenser 1:1/2:1, 10 3M™ Garant™ Mixing Tips white, 10 3M™ Garant™ Intra-oral Tips white, 1 Polyether Tray Adhesive – 17mL
	Refills: 2 base pastes – 300 mL each, 2 catalysts – 60 mL each
2 MIN 69385	3M™ Impregum™ Penta™ Super Quick MB Refill
2 MIN 69406	3M™ Impregum™ Penta™ Super Quick HB Refill
31644	3M™ Impregum™ Penta™ MB Refill
31730	3M™ Impregum™ Penta™ Soft MB Refill
31765	3M™ Impregum™ Penta™ Soft Quick Step MB Refill
31740	3M™ Impregum™ Penta™ H DuoSoft™ HB Refill
31769	3M™ Impregum™ Penta™ Soft Quick Step HB Refill
31745	3M™ Impregum™ Penta™ L DuoSoft™ LB Refill

Item no. Product information

	Refills
2 MIN 69379	3M™ Impregum™ Super Quick LB 4 Cartridges – 50 mL each, 5 3M™ Intra-oral Syringes Purple, 5 3M™ Garant™ Mixing Tips, Purple
31785	3M™ Impregum™ Soft Tray MB Refill 4 Cartridges – 50 mL each, 10 Polyether Tray Mixing Tips, Purple
31788	3M™ Impregum™ Soft Quick Step Tray MB Refill 4 Cartridges – 50 mL each, 10 Polyether Tray Mixing Tips, Purple
31751	3M™ Impregum™ DuoSoft™ LB Refill 4 Cartridges – 50 mL each, 10 Polyether Mixing Tips, White, 5 3M™ Intra-Oral Syringes Purple
31767	3M™ Impregum™ Soft Quick Step LB Refill 4 Cartridges – 50 mL each, 10 Polyether Mixing Tips, White, 5 3M™ Intra-Oral Syringe Purple
	Cartridges for 3M™ Pentamix™ Automatic Mixing Units
2 MIN 69387	3M™ Impregum™ Penta™ Super Quick MB Cartridge
2 MIN 69401	3M™ Impregum™ Penta™ Super Quick HB Cartridge
P3774	3M™ Impregum™ Penta™ Soft Quick Step HB Cartridge
P3776	3M™ Impregum™ Penta™ Soft Quick Step MB Cartridge
P3792	3M™ Impregum™ Penta™ MB Cartridge
71545	3M™ Universal Penta™ Cartridge for Pentamix™ 3
76994	3M™ Universal Penta™ Cartridge for Pentamix™ 2
77944	3M™ Penta™ Cartridge for 3M™ Pentamix™ Lite
	Impressioning Trays
71615	3M™ Directed Flow Impression Tray, Size S, upper jaw, 10 Trays
71616	3M™ Directed Flow Impression Tray, Size M, upper jaw, 10 Trays
71617	3M™ Directed Flow Impression Tray, Size L, upper jaw, 10 Trays
71618	3M™ Directed Flow Impression Tray, Size S, lower jaw, 10 Trays
71619	3M™ Directed Flow Impression Tray, Size M, lower jaw, 10 Trays
71620	3M™ Directed Flow Impression Tray, Size L, lower jaw, 10 Trays
71622	3M™ Dual Arch Trays Posterior, 48 Trays
71623	3M™ Dual Arch Trays Anterior, 35 Trays
	Related Products & Accessories
71507	3M™ Intra-Oral Syringe - Purple, 20 Syringes
71508	3M™ Intra-Oral Syringes - Purple, 50 Syringes
77580	Cartridge Dispenser 1:1/2:1
77949	3M™ Penta™ Mixing Tips - Red, 50 Tips
71451	3M™ Polyether Intra-Oral Tips - White, 50 Tips
71454	3M™ Polyether Mixing Tips - Purple, 50 Tips
71461N	3M™ Garant™ Intra-oral Tips - White, 50 Tips
71210	3M™ Elastomer Syringe Set 1 Syringe, 4 Tips, 4 Barrels, 1 Brush
30600	3M™ Polyether Tray Adhesive - 17 mL
69408	3M™ Polyether Contact Tray Adhesive - 17 mL
56944	3M™ Astringent Retraction Paste Refill Pack, 25 Capsules
56945	3M™ Astringent Retraction Paste Value Pack, 100 Capsules

3M Australia Pty Limited | Building A, 1 Rivett Rd, North Ryde, NSW 2113 | 3M.com.au/ImpregumSQ

3M New Zealand Limited | 94 Apollo Drive Rosedale, Auckland 0632 | 3M.co.nz/ImpregumSQ

Not all products are available in both Australia and New Zealand. Always follow the Instructions for Use (IFU) and refer to IFU for full indications, precautions and warnings. Claims supported by 3M data on file. Comparative claims are in relation to 3M Impregum Soft Quick Step, 3M, "3M Science. Applied to Life.", DuoSoft, Garant, Impregum, Penta and Pentamix are trademarks of 3M. © 3M 2018. All rights reserved.