

## Demonstration Vehicles

Our fleet of 11 mobile demonstration vehicles located throughout Australia and New Zealand are fitted out with the latest fall protection and rescue systems that can bring vital on-site tool box talks to your workplace. These demonstration vehicles are fitted with drop test and force measuring instruments to demonstrate arresting forces that workers would experience during a fall.

## Consulting Services

Working on site with you, our team will provide consulting services for:

- Site survey
- Policy and procedures
- Hazard analysis
- Fall protection plans
- Rescue plans
- Emergency evacuation procedures

Call today to learn more about our training and consulting services

**Australia: 1800 445 867**  
**New Zealand: 0800 212 505**  
**[www.3m.com.au/fallprotectiontraining](http://www.3m.com.au/fallprotectiontraining)**  
**[anzfallprotectiontraining@mmm.com](mailto:anzfallprotectiontraining@mmm.com)**



## Comprehensive training, when and where you need it



## We've got your back

3M Fall Protection is dedicated to bringing workers home safely. Our focus drives us to design and manufacture the safest possible height safety gear.

We understand the industries we serve and listen to the workers in the field. We employ engineers to create innovative solutions and patent the products that keep workers safe at heights around the world. 3M Fall Protection offers its customers the quality products, expertise and service of the trusted 3M™ DBI-SALA® and 3M™ Protecta® Fall Protection Brands.

We take an innovative approach in bringing our products to the field. We have created international partnerships and a vast network of authorised distributors, certified installers and service centres. We offer on-site and in-house training. 3M Fall Protection is one of the world's leading manufacturers of fall protection and rescue equipment, with decades of experience and a legacy of innovation. Look for complete solutions in our extensive range of DBI-SALA® and Protecta® brands.

**"Dedicated to bringing every worker at height home safely"**

Visit **[www.3m.com.au/fallprotectiontraining](http://www.3m.com.au/fallprotectiontraining)** to learn more or call **1800 445 867 (Aus)** or **0800 212 505 (NZ)** to register today or alternatively email: **[anzfallprotectiontraining@mmm.com](mailto:anzfallprotectiontraining@mmm.com)**

**Important Notice** To the extent permitted by law, 3M shall not be liable for any loss or damage including any loss of business, loss of profits, or for any indirect, special, incidental or consequential loss or damage arising from reliance upon any information herein provided by 3M. Nothing in this statement will be deemed to exclude or restrict 3M's liability for death or personal injury arising from its negligence.

**3M Australia Pty Ltd**  
**Personal Safety Division**  
Bldg A, 1 Rivett Road  
North Ryde NSW 2113  
TechAssist Helpline: 1800 024 464  
Customer Service: 1300 363 565  
Email: [techassist@mmm.com](mailto:techassist@mmm.com)  
Web: [www.3m.com/au/ppesafety](http://www.3m.com/au/ppesafety)

**3M New Zealand Ltd**  
**Personal Safety Division**  
94 Apollo Drive, Rosedale  
Auckland 0632  
TechAssist Helpline: 0800 364 357  
Customer Service: 0800 252 627  
Email: [techassist@mmm.com](mailto:techassist@mmm.com)  
Web: [www.3m.com/nz/ppesafety](http://www.3m.com/nz/ppesafety)

3M is a trademark of 3M Company.  
© 3M 2021. All rights reserved  
AV011497698



## Fall Protection Training & Consulting Courses

**[www.3m.com.au/fallprotectiontraining](http://www.3m.com.au/fallprotectiontraining)**

#3MScienceOfSafety

## Dedicated to bringing every worker at height home safely

When it comes to protecting your work site - no matter where it is - we offer a variety of training and consulting services to fit your needs. At our site or yours, you can trust us to provide world-class training with the industry's best instructors. Because if it's not exactly what you need, then it's not comprehensive training.

## Anytime anywhere – our site or yours

The key to effective training is practical, hands-on experience. We offer a full range of fall protection, confined space, industrial rescue, first aid and a range of specialty courses on-site or at one of our two state-of-the-art training centres located throughout Australia.

### Training

#### In-house Training Facilities

Custom-built, in-house training facility at our Sydney training centre provides a hands-on training experience. Practical demonstrations, individual exercises and theoretical assessment ensure our courses build confidence and enhance safety competence when working at heights.

#### On-Site Training

3M Fall Protection offers its training programs at the client's site to all locations across Australia. If you can provide the students and the location, we will provide the equipment and experienced instructors.

#### Tailored Training

3M Fall Protection also tailor training courses to suit a company's individual requirements. We specialise in the design and implementation of training for industry sectors such as: civil, construction, mining, and wind energy. We also offer specialist courses such as: roof top and bridge rescue, jump form, tower crane and swing stage rescue, drill rig rescue, post fall recovery and wind turbine rescue.

### Awareness

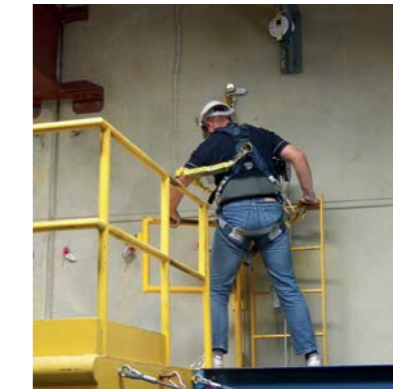
#### 24/7 Access to Fall Protection Resources

3M Fall Protection provides a wide variety of additional resources to help educate and inform our customers in the area of fall protection, most of them available online. We believe that training is best with hands-on experience and so we do not offer on-line accredited courses.

#### Expert Consulting

Providing early detection of fall protection hazards, solutions to minimise risks and implement training and inspection.

We can also assist in report and rescue plan design and testing.



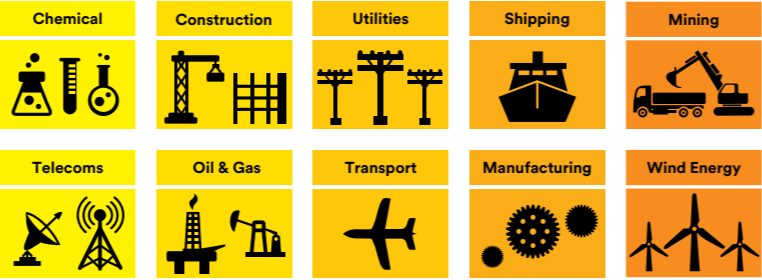
# Training classes

Our trainer’s experience and knowledge is a result of working in the safety industry for a variety of clients across Australia. Our courses have been designed to ensure your employees are thoroughly trained in a practical, hands-on environment.

Detailed course descriptions and scheduled public dates and booking forms are available online.

3M Australia delivers accredited units of competency as 3M Australia Pty Ltd, RTO Code 45498.

## Where our expertise extends:



Course	Description	Qualification	Length	Trainer Ratio
Fall Protection Courses as Recommended in AS/NZS1891.4:2009				
Height Safety Operator (Work Safely at Heights)	This course takes the student through the theory of working at heights and also includes practical exercises using height safety equipment to give students the knowledge to replicate these skills at the workplace. This course includes an introduction to peer rescue.	Statement of Attainment in "RIIWH5204E Work safely at heights"	1 Day	1:10
Height Safety Supervisor	This course is designed to provide students with the necessary skills to be competent as a Height Safety Supervisor as per AS/NZS1891.4. Height Safety supervisors need to be able to: - Perform harness based skills unsupervised - Competently supervise height safety operators - Participate in a first response rescue	Statement of Attainment in "PUASAR022 Participate in a rescue operation, PUATEA001 Work in a team, PUATEA002 Work autonomously, RIIRIS201E Conduct local risk control, RIIWH5204E Work safely at heights", and a Certificate of Completion for "Height Safety Supervisor"	3 Days	1:6
Height Safety Manager	This course builds on the previous unit skill level of Height Safety Supervisor to consolidate all that is learned and to further develop these skills to Height Safety Manager level as per AS/NZS1891.4. Students will be given height safety tasks and will be required to choose the most appropriate equipment for that task, write a fall protection plan and a rescue plan as well as conducting a risk assessment (SWMS). Students will work in teams to select, inspect, install and use the chosen height safety systems.	Statement of Attainment in "MEM15004B Perform inspection, RIIRIS301E Apply risk management processes". Certificate of Completion for "Height Safety Manager"	2 Days	1:6
Height Safety Equipment Inspector	This unit provides students with the knowledge and techniques to inspect and oversee the care and maintenance of their organisations fall protection equipment. The training focuses on the Australian Standards that require scheduled and documented inspection of height safety equipment.	Statement of Attainment in "MEM15004B Perform inspection". Certificate of Completion for "Height Safety Equipment Inspector"	4 Hours	1:8
Rescue from Heights Courses – All Nationally Accredited Rescue courses have the following: <i>3M Also recommends that students hold RIIWH5204D Work safely at heights or equivalent unit before participating in these courses.</i>				
Post Fall Recovery	This course has been designed to give students the necessary skills to perform an emergency recovery of a casualty with a pre-engineered rope rescue kit using a variety of recovery techniques such as high/low angle rescue, rescue from ladders/structures, rescue from an SRL and casualty evacuation techniques.	Statement of Attainment in "PUASAR022 Participate in a rescue operation". Certificate of Completion for Post Fall Recovery	1 Day	1:6
Tower Rescue - Basic Operator	This course is designed to provide students with the necessary skills and knowledge to perform vertical rope rescue techniques off towers, masts and structures using a pre-engineered rescue kit. Course focuses on the use of controlled decent devices such as the R550.	Statement of Attainment in "PUASAR022 Participate in a rescue operation". Certificate of Completion for "Tower Rescue Basic Operator"	1 Day	1:6
Tower Rescue - Advanced Operator	This course is designed specifically for tower workers to provide students with the necessary skills and knowledge to perform vertical rope rescue techniques off towers, masts and structures using technical rope rescue techniques and 'No worries' descent devices.	Statement of Attainment in "PUASAR022 Participate in a rescue operation". Certificate of Completion for "Tower Rescue Advanced Operator"	2 Days	1:6
Bridge Rescue	This course is designed to give students the necessary skills to perform a recovery of a casualty from a bridge structure where overhead anchorages are limited or not available in the event of an emergency.	Statement of Attainment in "PUASAR022 Participate in a rescue operation". Certificate of Completion for "Bridge Rescue"	1 Day	1:6
Rooftop Rescue	This course is designed to give students the necessary skills to perform a recovery of a casualty from a rooftop, where overhead anchorages are not available in the event of an emergency.	Statement of Attainment in "PUASAR022 Participate in a rescue operation". Certificate of Completion for "Rooftop Rescue"	1 Day	1:6
Jump Form Rescue	This course has been designed to give students the skills to perform a recovery of a casualty from within a Jump Form on a construction site.	Statement of Attainment in "PUASAR022 Participate in a rescue operation". Certificate of Completion for "Jump Form Rescue"	1 Day	1:6
Tower Crane Rescue & Evacuation	This course is designed to give students the necessary skills to respond to a variety of emergency situations that may occur whilst working on tower cranes such as a post fall recovery of a suspended casualty, the safe evacuation of an injured person off the deck or towers and the emergency self evacuation of a crane operator.	Statement of Attainment in "PUASAR022 Participate in a rescue operation". Certificate of Completion for "Tower Crane Rescue and Evacuation"	1 Day	1:6
Swing Stage Rescue	This course is designed to give students the necessary skills to perform the setup of independent lifelines in order to work safely in swing stages. Our swing stage emergency training also teaches students how to perform emergency recovery operations of suspended or incapacitated workers in the event of a swing stage collapse or disablement. Students will also gain the necessary skills to be able to perform an emergency evacuation out of a swing stage.	Statement of Attainment in "PUASAR022 Participate in a rescue operation". Certificate of Completion for "Swing Stage Rescue"	1 Day	1:6
Manual Handling	This course is designed to give students the understanding and skills to correctly move objects around the workplace using lifting techniques and equipment. This is suitable for all industries.	Statement of attainment in: "MEM11011B Undertake manual handling"	3 Hours	1:12

Course	Description	Qualification	Length	Trainer Ratio
Specialised Courses				
Twin Rope Access	This course is designed to teach twin rope access skills and knowledge required for tower workers. This course includes ascending and descending twin ropes using technical rope access techniques and equipment. This course allows successful students to use rope access techniques specifically for their role on towers.	Statement of Attainment in "PUASAR022 Participate in a rescue operation, RIIRIS201E Conduct local risk control, PUATEA001 Work in a team, PUATEA002 Work autonomously, RIIRIS301E Apply risk management process"	3 Days	1:6
Undertake Vertical Rescue	This is an advanced course designed for students requiring extensive training and experience working with technique rope techniques for self and peer rescue. These skills can be applied to various situations and environments. Techniques covered include various ascending and descending methods, self-rescue as well as peer recovery.	Statement of Attainment in "PUASAR032 Undertake vertical rescue"	5 Days	1:6
Low Voltage Rescue	This course aims to increase the students skills in low voltage rescue and to outline the responsibilities of personnel and control measures that can be taken to ensure safety, along with industry best practice. Rescue techniques taught are using LV rescue kits and based on workplace procedures.	Statement of Attainment in "UETTDRRF06 Perform rescue from a live LV Panel"	4 Hours	1:10
Low Voltage Rescue plus CPR	This course aims to increase the learners' skills in low voltage rescue and to outline the responsibilities of personnel and control measures that can be taken to ensure safety, along with industry best practice. The course will also provide the student with the skills to identify how and when to administer cardiopulmonary resuscitation.	Statement of Attainment in "UETTDRRF06 Perform rescue from a live LV Panel, HLTAID001 Provide cardiopulmonary resuscitation"	1 Day	1:10
Pole Top Rescue	This course covers workers who work at heights in the transmission, distribution or rail network industries who are required to perform a rescue of workmate from pole top. Students will learn different techniques for a range of industries.	Statement of Attainment in "UETTDRRF02 Perform pole top rescue"	8 hours	1:10
Tower Rescue	This course covers workers who work at heights in the transmission, distribution or rail network industries who are required to perform a rescue of workmate from electrical towers. The training will cover working at height techniques to ensure all persons undertaking rescue activities implement safe work practices to ensure their own safety and those around them. Rescue techniques taught are using work place rescue kits and based on work place procedures.	Statement of Attainment in "UETTDRRF04 Perform tower rescue"	8 hours	1:6
EWP Controlled descent escape & rescue	This course covers workers who use EWPs to work at heights in the transmission, distribution or rail network industries who may be required to perform a rescue of EWP operator who is unable to operate the machine or who may be required to perform an emergency descent out of a EWP. The training will cover working at heights techniques to ensure all persons undertaking these activities implement safe work practices to ensure their own safety and those around them. Rescue techniques taught are using EWPs and based on workplace procedures.	Statement of Attainment in "UETTDRRF03 Perform EWP rescue, UETTDRRF08 Perform EWP controlled descent escape"	8 hours	1:10
Wind Turbine Height Safety & Rescue	This program is customised to wind turbine technicians. Practical exercises include rescue of an incapacitated worker out of a tower or yaw deck. Students also learn how to set and perform an emergency evacuation out of a Nacelle.	Statement of Attainment in "PUASAR022 Participate in a rescue operation, PUATEA001 Work in a team, PUATEA002 Work autonomously", and a Certificate of Completion for "Wind Turbine Height Safety and Rescue"	3 Days	2:8
Wind Turbine Hub Rescue	Using the skills taught in the Wind Turbine Height Safety & Rescue, Hub Rescue teaches students how to package and remove a casualty from a wind turbine hub and lower them to safety.	Certificate of Completion for "Hub Rescue", Certificate of Completion for "Wind Turbine Hub Rescue"	8 Hours	2:8
Transformer / Substation Access	Height safety for transformer access and within substations is a course built for client need and necessity. Based upon our work safely at heights course and customised to meet the needs of the substation and transformer technicians. The course focuses on restraint systems where possible and fall arrest systems where necessary.	Statement of Attainment in "RIIWH5204E Work safely at heights", and a Certificate of Completion for "Transformer / Substation Access"	1 Day	1:10
Eliminate Falling Objects	This program has been developed to give students the skills to implement control measures to ensure safety in the workplace from falling objects. This course has both a theoretical and practical component.	Certificate of Completion for "Falling Objects"	4 Hours	1:20
Confine Small Workplace Emergencies	This course will train students in how to deal with small workplace emergencies. Examples include a small fire that can be controlled using a nearby fire extinguisher; or a chemical spill that can be controlled using workplace personal protective clothing and equipment, and a small spill kit; or a workplace vehicle accident where there is no significant injury or damage.	Statement of Attainment in "PUAFER008 - Confine small emergencies in a facility"	4 Hours	1:10
Confined Space and Breathing Apparatus				
Enter & Work in Confined Space	This course is designed for those workers that will work in, or on confined spaces as defined by Australian legislation. Additionally, those who plan or manage work that may involve confined space should undertake confined space training.  The course includes recognising what constitutes a confined space, identifying hazards, implementing control measures, selecting appropriate tools and equipment, gas testing atmospheres and working in accordance with issued permits. Additionally it covers considerations for being able to rescue from confined spaces.	Statement of Attainment in "MSMPER200 Work in accordance with an issued permit, MSMPER205 Enter confined space, MSMWHS217 Gas test atmospheres, RIIWH5202E Enter and work in confined spaces"	2 Days	1:10
Operate Breathing Apparatus	This training has been designed to give students the necessary skills to use breathing apparatus to access confined spaces for work tasks and emergency rescue. Includes pre and post operational checks, donning and doffing and duration calculations.	Statement of Attainment in "MSMWHS216 Operate breathing apparatus"	1 Day	1:10
Combined Enter & Work in Confined Space & Breathing Apparatus	This is aimed at those persons required to access confined spaces which have irrespirable environments. The course combines the skills of the enter and work in Confined Space and Breathing Apparatus courses.	Statement of Attainment in "MSMPER200 Work in accordance with an issued permit, MSMPER205 Enter confined space, MSMWHS217 Gas test atmospheres, RIIWH5202E Enter and work in confined spaces, MSMWHS216 Operate breathing apparatus"	3 Days	1:10
Gas Test Atmospheres	This course applies to situations where there is a possibility of a toxic or hazardous environment and gas testing is required prior to entering a specific area or workspace. Workplace atmospheres may include visible and invisible hazards and hazardous surfaces.	Statement of Attainment in "MSMWHS217 Gas test atmospheres"	4 Hours	1:10
First Aid and CPR				
Provide Cardiopulmonary Resuscitation	To provide the necessary skills and knowledge to allow a person to perform Cardiopulmonary Resuscitation (CPR) in line with the Australian Resuscitation Council (ARC) Guidelines.	Statement of Attainment in "HLTAID001 Provide cardiopulmonary resuscitation"	4 Hours	1:12
Provide Basic Emergency Life Support	To provide the necessary skills and knowledge to enable a first aider to provide an initial response to an emergency in line with practised actions and Australian Resuscitation Council (ARC) Guidelines and/or state/territory regulations, legislation, policies and accepted industry guidelines.	Statement of Attainment in "HLTAID001 Provide cardiopulmonary resuscitation, HLTAID002 Provide basic emergency life support"	8 Hours	1:12
Provide First Aid	To provide the necessary skills and knowledge to enable first aid response for life support and management of casualty(ies), the incident and other first aiders, until the arrival of medical or other assistance.	Statement of Attainment in "HLTAID001 Provide cardiopulmonary resuscitation, HLTAID003 Provide first aid"	2 Days	1:10