

# Treatment of fractured composite restoration of first lower molar with 3M™ Filtek™ One Bulk Fill Restorative

Clinical dentistry and photography by: Dr. Giuseppe Chiodera, Brescia, Italy

## About the Case:

Male patient.

Patient needed treatment due to a fractured composite restoration. Fractured restoration was causing patient significant discomfort.

## Challenge:

The complete removal of the fractured composite restoration resulted in a large restoration that needed to be completed in a short amount of time.

## Step-by-Step:



Fig. 1: Initial situation: Fractured composite restoration of first lower molar.



Fig. 2: The tooth is isolated and the insufficient composite restoration completely removed.

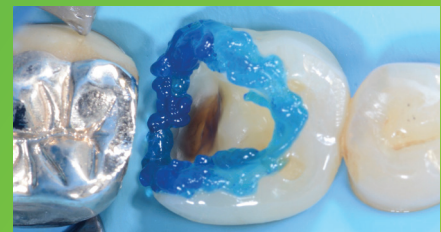


Fig. 3: Tooth is etched with a selective enamel etching technique using 3M™ Scotchbond™ Universal Etchant.

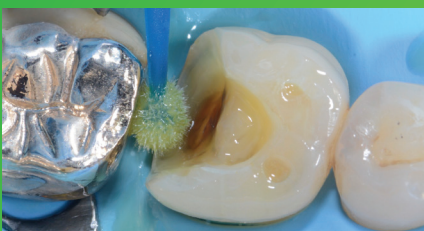


Fig. 4: 3M™ Scotchbond™ Universal Adhesive is applied for 20 seconds.

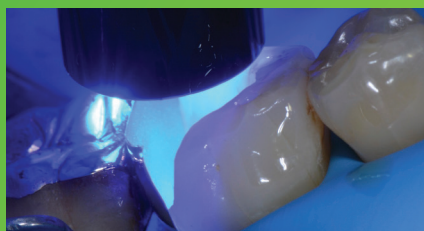


Fig. 5: After air drying for approximately 5 seconds, 3M™ Elipar™ DeepCure-S LED Curing Light is used to light cure for 10 seconds.



Fig. 6: 3M™ Filtek™ One Bulk Fill Restorative, shade A3, is placed directly into the cavity and then cured according to the Instructions for Use.

# Treatment of fractured composite restoration of first lower molar with 3M™ Filtek™ One Bulk Fill Restorative (continued)



Fig. 7: 3M™ Filtek™ One Bulk Fill Restorative surface finished before final polishing.



Fig. 8: Pre-polishing of restoration with 3M™ Sof-Lex™ Pre-Polishing Spiral.



Fig. 9: Polishing with 3M™ Sof-Lex™ Diamond Polishing Spiral to create a final smooth and high-gloss polish for a natural-looking restoration.



Fig. 10: Final restoration at a recall visit 4 months after placement is natural-looking and aesthetic.

## The 3M Difference:

With its one-step placement and easy handling, 3M™ Filtek™ One Bulk Fill Restorative enabled a fast and easy posterior restoration without compromising on aesthetics. The patient was very satisfied with the efficiency of the procedure and natural-looking result.

Refer to Instructions for Use (IFU) for complete product information.

# 3M

### 3M Oral Care

3M Australia Pty Limited  
Building A, 1 Rivett Rd  
North Ryde, NSW 2113  
Ph: 1300 363 454  
www.3M.com.au

3M New Zealand Limited  
94 Apollo Drive  
Rosedale, Auckland 0632  
Ph: 0800 80 81 82  
www.3M.co.nz



Find us on Facebook

3M, Elipar, Filtek, Scotchbond and Sof-Lex are trademarks of 3M Company. Please recycle. © 3M 2018. All rights reserved.