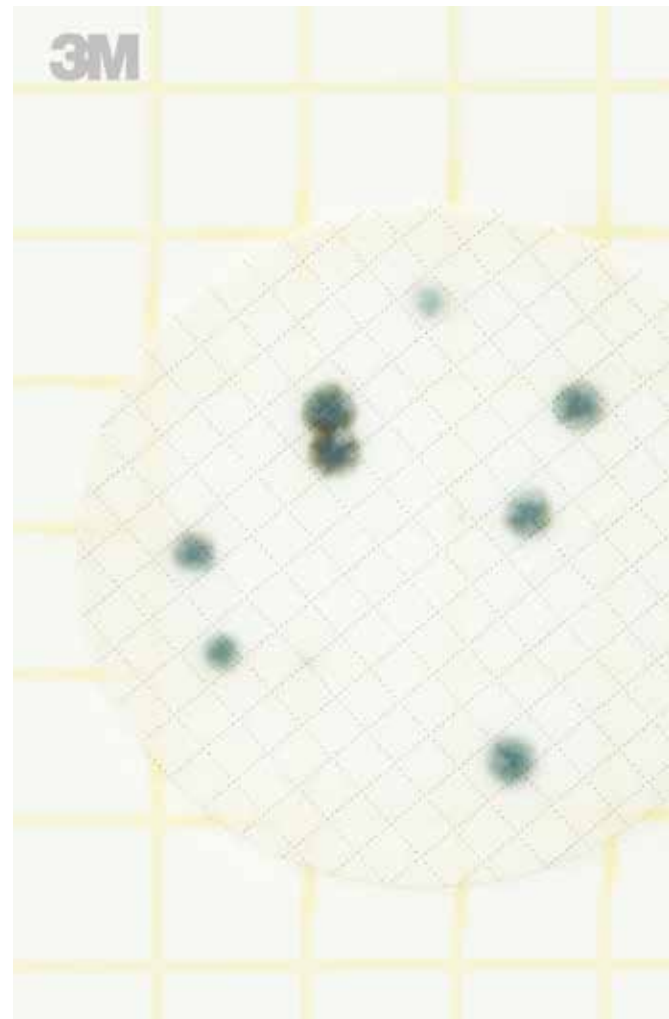




Petrifilm™

Interpretation Guide

The 3M™ Petrifilm™ Aqua Yeast and Mold Count Plate is a sample-ready culture medium system, which contains nutrients supplemented with antibiotics, a cold-water-soluble gelling agent, and an indicator that facilitates colony enumeration. 3M Petrifilm Aqua Yeast and Mold Count Plates are used for the enumeration of yeast and mold in the bottled water industry.



AQYM
Aqua Yeast and Mold Count Plate



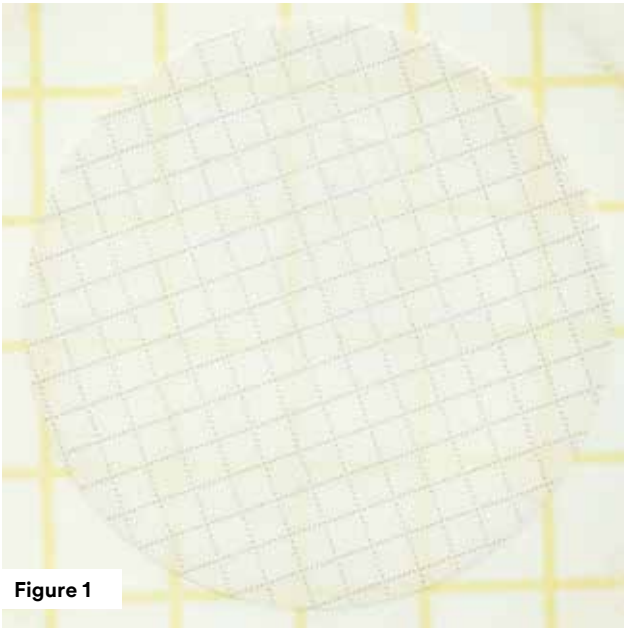


Figure 1

Yeast and mold count: 0

3M Petrifilm Aqua Yeast and Mold Count Plate with no colonies.

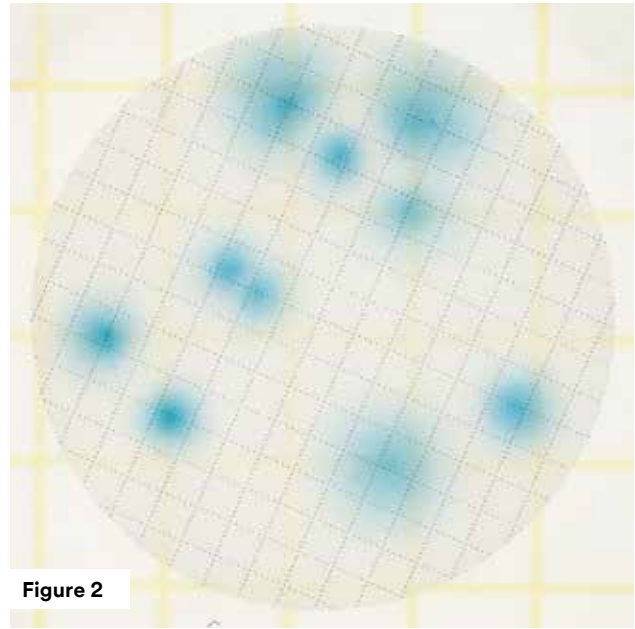


Figure 2

Yeast and mold count: 10

Mold colonies are large with a dark center and diffuse edge.

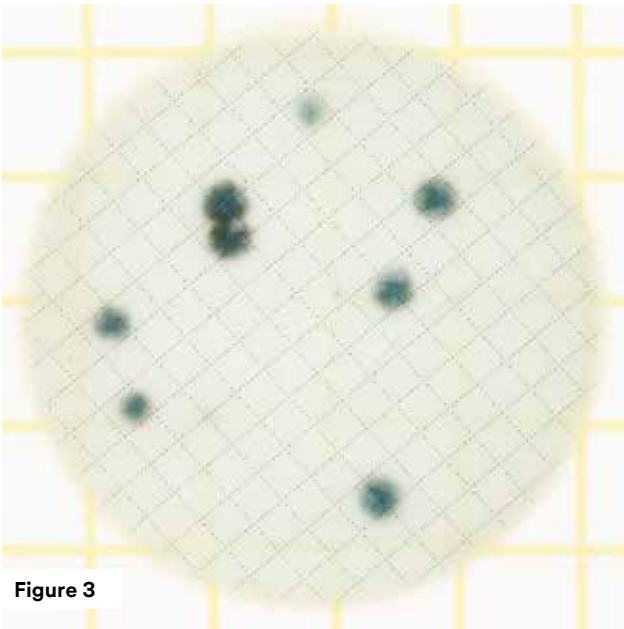


Figure 3

Yeast and mold count: 10

Note two small, faint colonies.

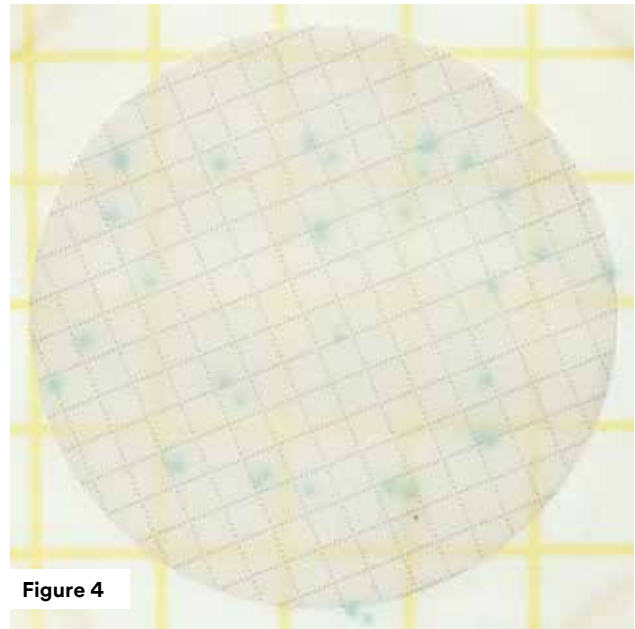


Figure 4

Yeast and mold count: 31

Count colonies partially or totally off of the filter.

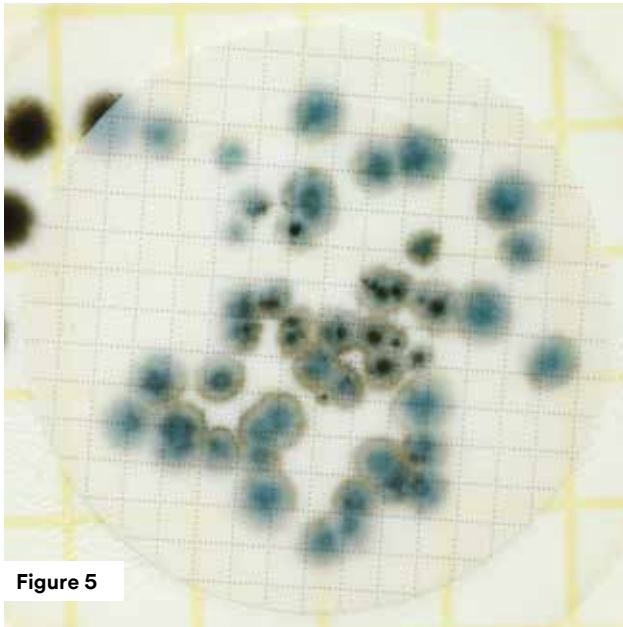


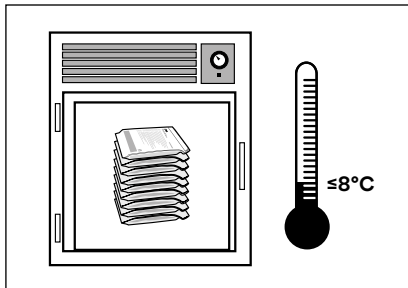
Figure 5

Yeast and mold count: 51

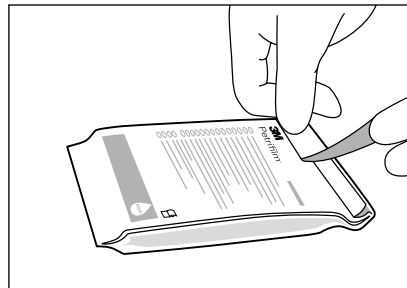
Estimate colony count when molds merge; darker centers can help enumerate colonies. Count colonies partially or totally off of the filter.

Reminders for Use

Storage

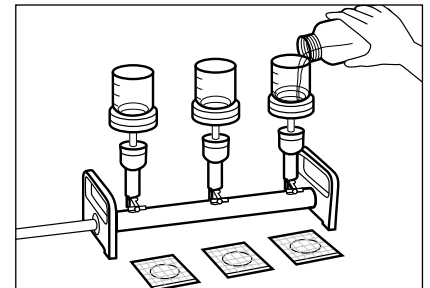


- 1 Store unopened pouches at $\leq 8^{\circ}\text{C}$ ($\leq 46^{\circ}\text{F}$). Use before expiration date on package. Just prior to use, allow unopened pouches to come to room temperature before opening.

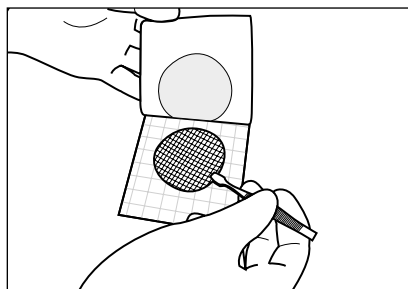


- 2 To seal opened pouches, fold end over and apply adhesive tape. **Do not refrigerate opened pouches.** Use 3M Petrifilm Aqua Yeast and Mold Count Plates within one month after opening.

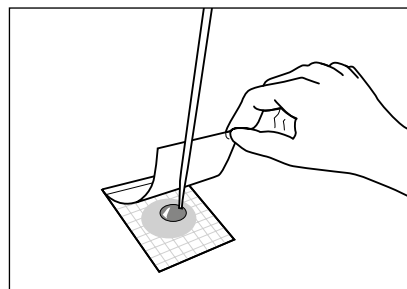
Hydration Procedure



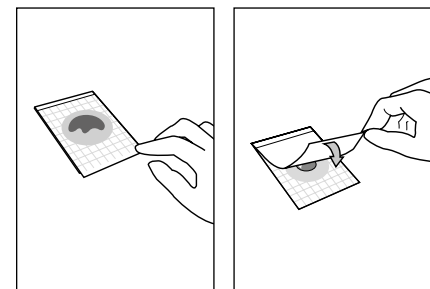
- 3 Following standard procedures for water analysis, membrane filter water sample using a 47 mm, 0.45 micron pore size Mixed Cellulose Ester (MCE) filter.



- 4 Place filter in the center of the plate.

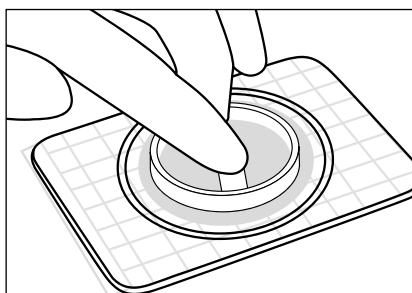


- 5 With the pipette perpendicular to the 3M Petrifilm Aqua Yeast and Mold Count Plate, place 1 mL of hydration diluent onto the center of the filter. Appropriate sterile diluents include distilled water, deionized (DI) water and reverse osmosis (RO) water.

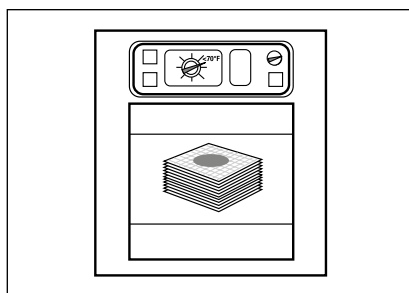


- 6 Carefully roll top film down onto the filter.

Incubation

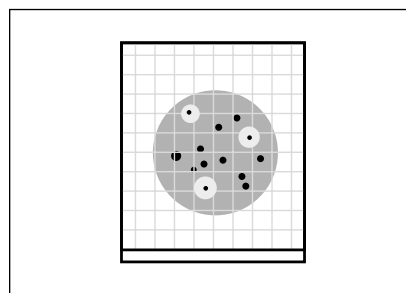


- 7** Lightly apply pressure to the 3M™ Petrifilm™ Yeast and Mold Spreader to ensure uniform contact of the filter with the gel and to eliminate any air bubbles.

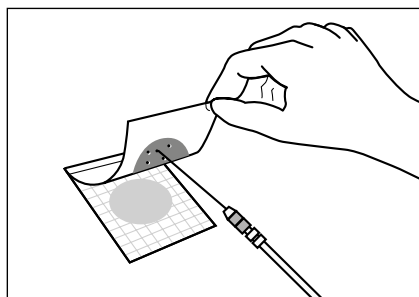


- 8** Incubate 3M Petrifilm Aqua Yeast and Mold Count Plates in a horizontal position, clear side up, in stacks on no more than 20 plates at 20–25°C for 3–5 days.

Interpretation



- 9** 3M Petrifilm Aqua Yeast and Mold Count Plates can be counted on a standard colony counter or other illuminated magnifier.



- 10** Colonies may be isolated for further identification. Lift top film and pick the colony from the gel.

3M Food Safety offers a full line of products to accomplish a variety of your microbial testing needs. For more product information, visit us at 3M.com/foodsafety/Petrifilm or call 1-800-328-6553.



3M Food Safety
3M Center, Building 275-5W-05
St. Paul, MN 55144-1000 USA

1-800-328-6553
3M.com/foodsafety

3M Canada
Post Office Box 5757
London, Ontario N6A 4T1
Canada

1-800-364-3577

User's Responsibilities: User's Responsibilities: 3M Petrifilm Plate performance has not been evaluated with all combinations of microbial flora, incubation conditions and food matrices. It is the user's responsibility to determine that any test methods are results meet the user's requirements. Should re-printing of this Interpretation Guide be necessary, user's print setting may impact picture and color quality.

For detailed CAUTIONS, DISCLAIMER OF WARRANTIES/LIMITED REMEDY and LIMITATION OF 3M LIABILITY, STORAGE AND DISPOSAL information and INSTRUCTIONS FOR USE, see Product's package insert.

3M and Petrifilm are trademarks of 3M. Used under license in Canada. Please recycle. Printed in USA. © 3M 2017. All rights reserved. 70-2009-9450-0 (Rev-1217).