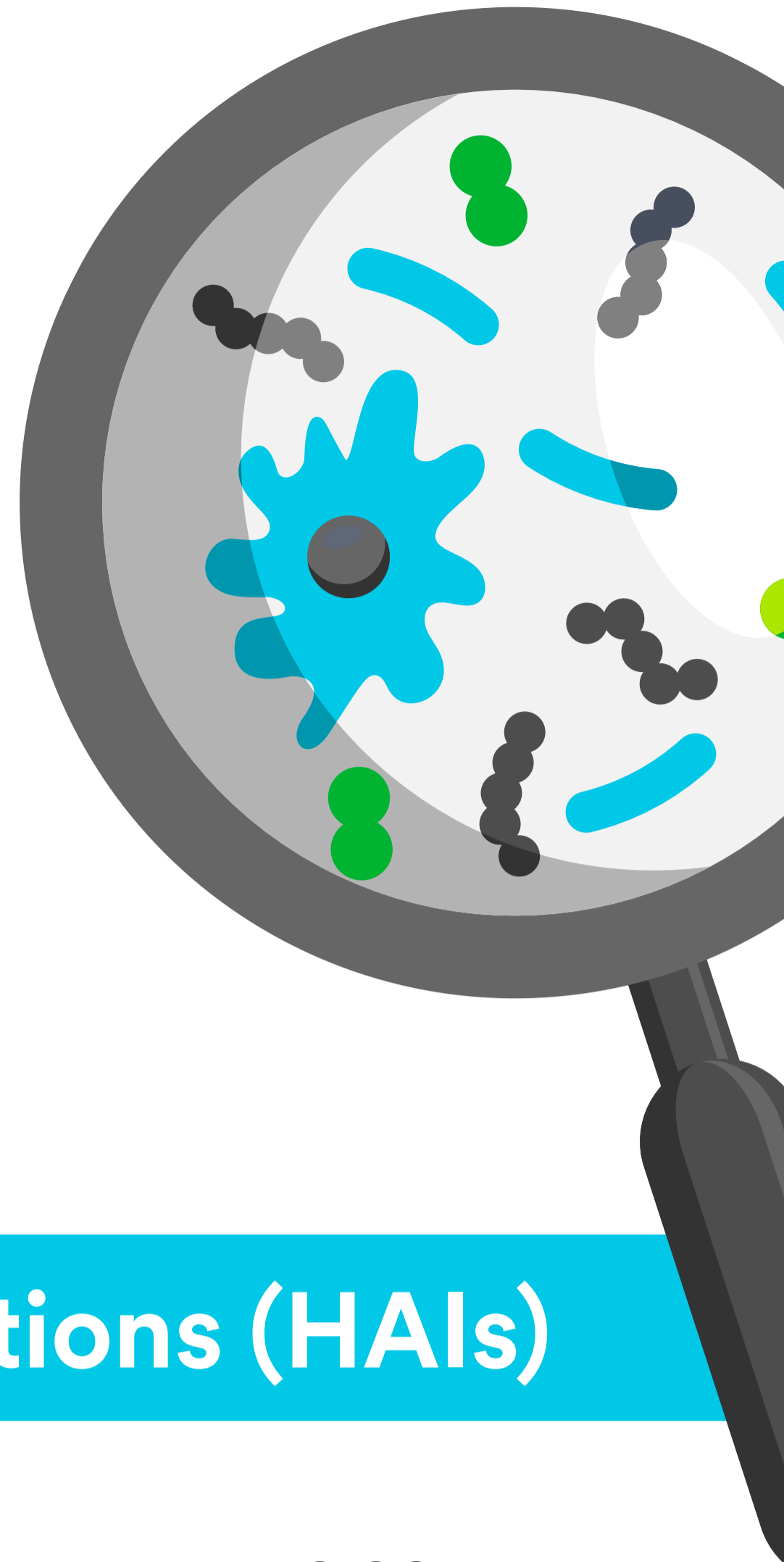
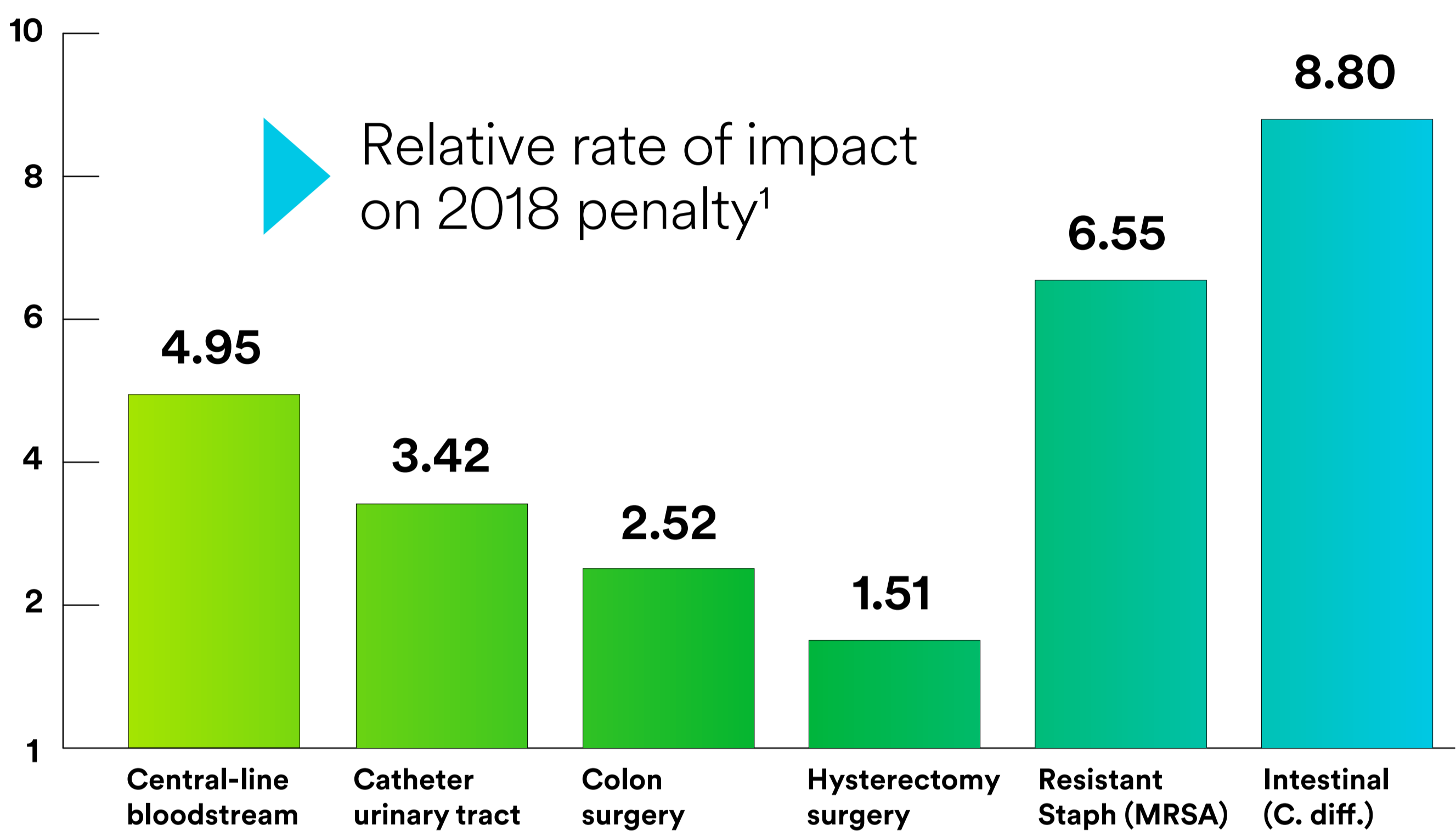


Infections

with the highest
impact on Medicare
HAC penalties



Healthcare Associated Infections (HAIs)



Infection rates count
**85%² toward your
HAC scores.**



Attention to high-
impact infections
can help you **get out of the
bottom quartile penalty box.**

Where should you focus your efforts?



**The most recent infection categories (FY 2017)
have a much higher likelihood of penalty:**

- Intestinal infections (C. diff.)
- Antibiotic-resistant staph infections (MRSA)

¹ This bar chart shows that if your rate of infection is higher than expected, then the probability of being penalized increases at this relative rate. See HospitalCompare.gov.

² Domain 2—Centers for Disease Control and Prevention (CDC) National Healthcare Safety Network (NHSN) Healthcare-Associated Infection (HAI)—is weighted 85 percent toward total HAC score. See Qualitynet.org section on HAC Reduction Program.