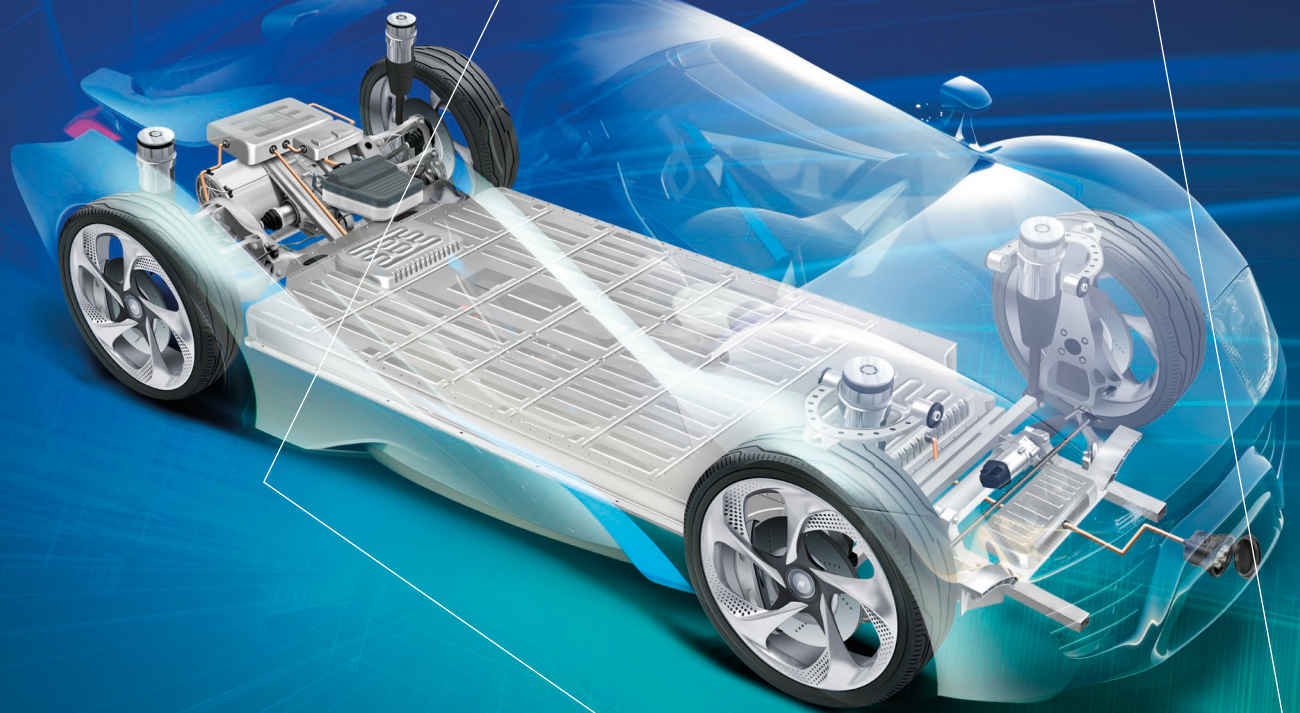


**Important notice:**

The values presented above have been determined by standard test methods and are average values not to be used for specification purposes. Our recommendations on the use of our products are based on tests believed to be reliable but we would ask that you conduct your own tests to determine their suitability for your applications. Please take all safety and occupational health and safety regulations into account when using this product. All questions of liability relating to this product are governed by the terms of sale subject, where applicable, to the prevailing law.

3M is a trademark of 3M Company. Subject to technical alterations and printing errors.  
As of: 04/2019. © 3M 2019. All rights reserved. AD36-0096EN

# Bonding solutions Automotive Batteries



**3M Deutschland GmbH**  
Carl-Schurz-Straße 1, 41453 Neuss, Germany

Phone: +49 2131 14-0  
Email: [innovation.de@mmm.com](mailto:innovation.de@mmm.com)  
Website: [www.3M-klebtechnik.de](http://www.3M-klebtechnik.de)

**3M (Schweiz) GmbH**  
Eggstrasse 93, 8803 Rüschlikon, Switzerland

Phone: +41 44 724-9090  
Email: [innovation.ch@mmm.com](mailto:innovation.ch@mmm.com)  
Website: [www.3M.com/ch/kleben](http://www.3M.com/ch/kleben)

**3M Österreich GmbH**  
Kranichberggasse 4, 1120 Vienna, Austria

Phone: +43 1 86 686-0  
Email: [innovation.at@mmm.com](mailto:innovation.at@mmm.com)  
Website: [www.3M.com/at/kleben](http://www.3M.com/at/kleben)



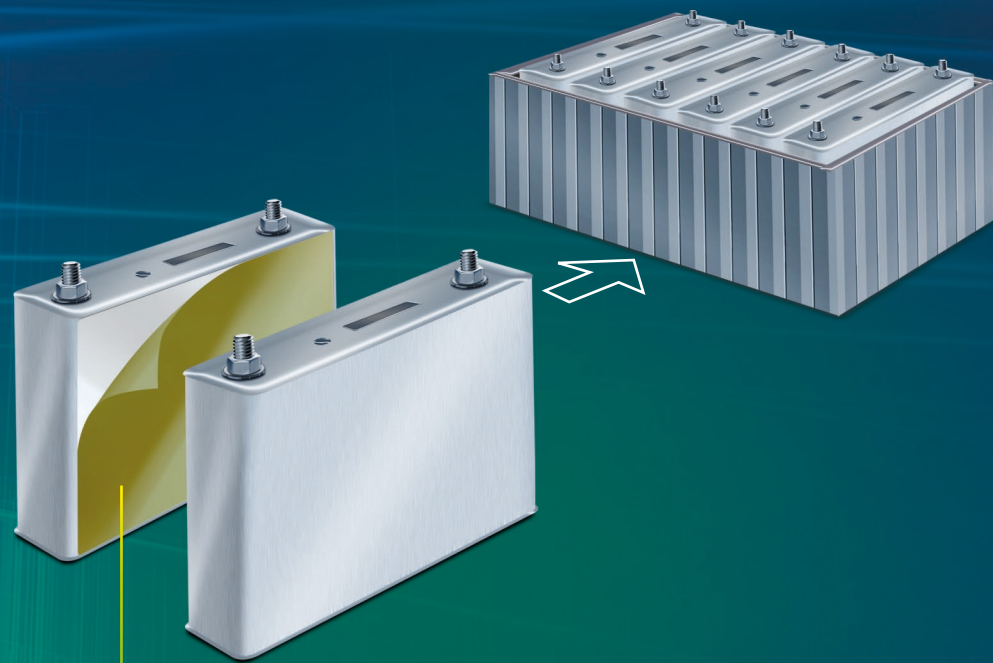
# Customised bonding solutions

## 3M™ Double-sided Adhesive Tapes

These tapes have been used in the automotive industry for decades with great success. They have a diverse range of applications and offer many advantages:

- Bonding of dissimilar materials
- No damage to the material surface
- Uniform thickness of the adhesive layer
- Quick and clean application
- Designed for manual or automated application

3M offers a comprehensive range of double-sided adhesive tapes, including customised product solutions.

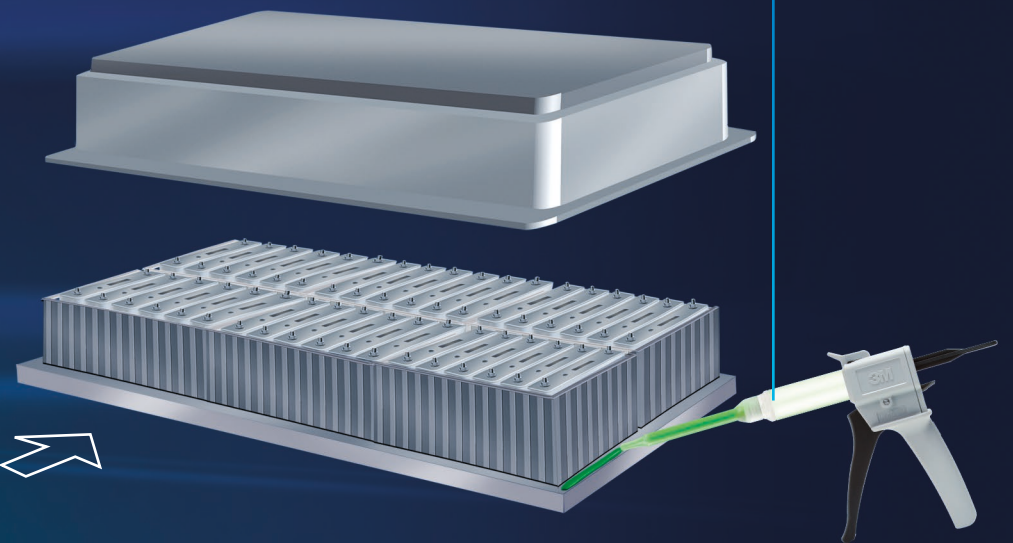


### Applications and areas of use:

- Battery cell assembly
- Electrical insulation
- Gap spacing

## Applications and areas of use:

- Bonding solutions for housing components



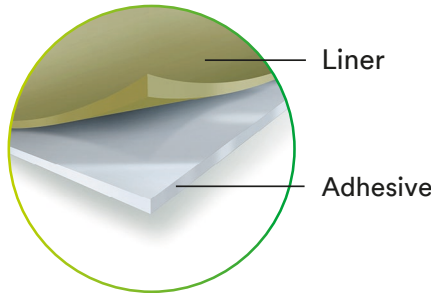
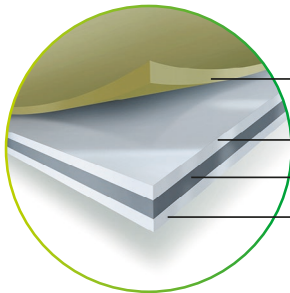
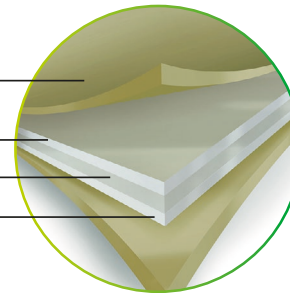
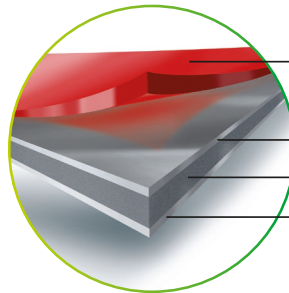
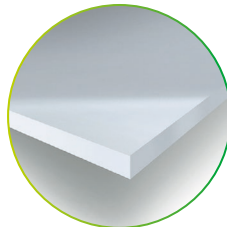
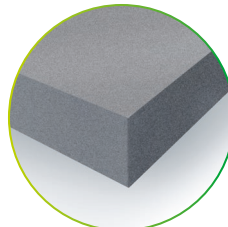
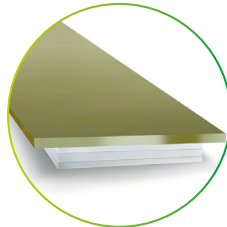
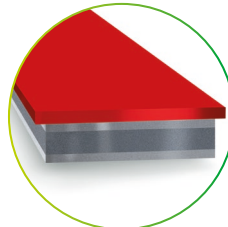
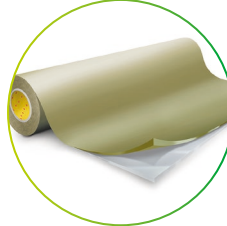
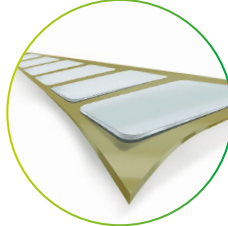
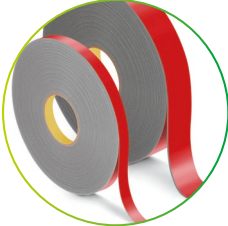
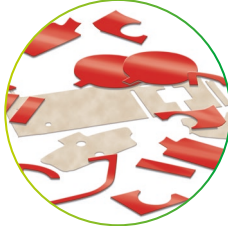
## 3M™ Structural Adhesives

Design, reliability and safety. When you need high-strength bonds, you can't afford to compromise. You can always rely on the performance of 3M Structural Adhesives.


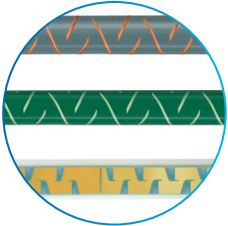
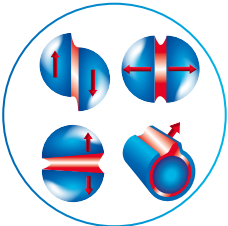


- No damage to the material surface
- Bond complex shapes with narrow bonding lines
- Fast bonding and easy application
- Weather resistant
- Automated application possible

3M provides a broad range of structural adhesives that can be used for bonding a wide variety of substrates.

# 3M™ Double-sided Adhesive Tapes

|  |  |   |  |   |
|--|--|---|--|---|
| <div><p>Total thickness: 0.025–0.25 mm<br/>without liner</p><p>Liner<br/>Adhesive</p><p>Adhesive transfer tape<br/>without carrier</p><p>↓</p><ul style="list-style-type: none"><li>• High flexibility</li><li>• High conformability</li></ul></div>  |  | <div><p>Product constructions</p><p>Total thickness: 0.05–0.275 mm<br/>without liner</p><div><p>Liner<br/>Adhesive<br/>PET carrier<br/>Adhesive</p><p>Double-coated tape<br/>with thin carrier</p><p>↓</p><ul style="list-style-type: none"><li>• Very good die cutting and processing properties</li><li>• Electrical insulation (depending on thickness of the carrier)</li></ul></div><div><p>Liner<br/>Adhesive<br/>PET carrier<br/>Adhesive</p><p>Double-coated tape<br/>with thick carrier (spacer)</p><p>↓</p><ul style="list-style-type: none"><li>• Very good die cutting and processing properties</li><li>• Electrical insulation (depending on thickness of the carrier)</li></ul></div></div> |  | <div><p>Total thickness: 0.4–4.0 mm<br/>without liner</p><p>Liner<br/>Additional adhesive layer<br/>Acrylic adhesive core<br/>Additional adhesive layer</p><p>Double-sided high-performance adhesive tape<br/>(spacer)</p><p>↓</p><ul style="list-style-type: none"><li>• High adaptability to surfaces where tape is applied</li><li>• Tension-free taping</li><li>• Resistant to temperature, weather, UV rays and dissolvents</li></ul></div> |
| <div><p>Various adhesive systems</p><ul style="list-style-type: none"><li>• High-surface-energy substrates, including metals and many plastics (Series 200MP)</li><li>• Low-surface-energy substrates, including PP (Series 300LSE, 360)</li><li>• Featuring high shear strength (Series 200MP, 360)</li><li>• Quick initial tack (Series 360)</li></ul></div> |  | <div><ul style="list-style-type: none"><li>• 100% closed-cell acrylate adhesive core</li><li>• No foam carriers</li></ul></div>   |  |   |
| <div><p>Liner</p><ul style="list-style-type: none"><li>• Paper</li><li>• Film</li><li>• Extended liners</li></ul></div>   |  | <div><ul style="list-style-type: none"><li>• Film</li><li>• With extended liner</li></ul></div>  |  |   |
| <div><div><ul style="list-style-type: none"><li>• Rolls</li></ul></div><div><ul style="list-style-type: none"><li>• Die-cut parts</li></ul></div></div>   |  | <div><div><ul style="list-style-type: none"><li>• Rolls</li></ul></div><div><ul style="list-style-type: none"><li>• Die cuts</li></ul></div></div>  |  |   |

# 3M™ Structural Adhesives

|   |  |
|---|--|
| <div><p>Product features</p><p>↓</p><ul style="list-style-type: none"><li>• Freedom to design</li><li>• Improved product aesthetics with clean bond lines</li><li>• Lightweight bonds with no damage to the surface</li><li>• High-strength bonding of composites, metals and multi-material combinations</li><li>• Eliminate galvanic corrosion when bonding two different metals</li></ul></div> |  |
| <div><p>Various adhesive chemistries</p><ul style="list-style-type: none"><li>• Acrylic adhesives</li><li>• Epoxy adhesives</li><li>• Urethane adhesives</li></ul></div>  |  |
| <div><p>Various adhesive types</p><ul style="list-style-type: none"><li>• Rigid – high tensile strength/high shear strength</li><li>• Flexible – high peel strength/impact resistance</li><li>• Toughened – high shear strength/great shear and impact resistance</li></ul></div>  |  |
| <div><div><ul style="list-style-type: none"><li>• Bulk</li></ul></div><div><ul style="list-style-type: none"><li>• Cartridges</li></ul></div></div>   |  |