

# 3M™ Disposable Respirator 1870+, N95

## Technical Data Sheet

The 1870+ healthcare respirator is designed to help provide respiratory protection for the wearer against certain airborne particles. It meets CDC guidelines for Mycobacterium tuberculosis exposure control. As a disposable particulate respirator, it is intended to reduce wearer exposure to certain airborne particles including those generated by electrocautery, laser surgery, and other powered medical instruments. As a surgical mask, it is designed to be fluid resistant to splash and spatter of blood and other infectious materials. The 1870+ particulate respirator is a personal protective equipment (PPE) that is primarily intended to protect the health care workers by reducing exposure to harmful airborne particles which are small enough to be inhaled – typically particles less than 100 microns in size. These include airborne particles that may contain biological material e.g. Bacillus anthracis, Mycobacterium tuberculosis, mould and the virus that causes Severe Acute Respiratory Syndrome (SARS), and Influenza.

### Features

- NIOSH approved N95 rating
- FDA cleared for use as a surgical mask
- Fluid Resistant 160 mmHg
- Flammability Rating Class I
- Adjustable nose clip
- 3-Panel, flat-fold style
- Stapled headbands
- Individually packed

### Materials

The following materials are used in the production of 1870+ respirators:

|           |               |
|-----------|---------------|
| Straps    | Polyisoprene  |
| Staples   | Steel         |
| Nose Clip | Aluminium     |
| Nose Foam | Polyurethane  |
| Filter    | Polypropylene |
| Coverweb  | Polypropylene |

**This respirator does not contain components made from natural rubber latex.**

Maximum mass of products = 10g



### Use For

- Intended to be worn by operating room personnel during surgical procedures to help protect both the surgical patient and the operating room personnel from transfer of microorganisms, body fluids, and particulate material.
- Always follow *User Instructions* and use in manners as indicated

### Do Not Use for

- DO NOT use in industrial settings
- DO NOT use for gases or vapours (i.e. anesthetic gases such as isoflurane or vapours from sterilants such as glutaraldehyde.)
- DO NOT use in any manner not indicated in the *User Instructions*

### Approvals and Standards

- NIOSH approved N95 respirator
- Meets NIOSH 42 CFR 84 N95 requirements for a minimum 95% filtration efficiency against solid and liquid aerosols that do not contain oil.
- NIOSH approval number: TC-84A-5726
- FDA cleared for use as a surgical mask
- Health Canada Class I medical device
- Bacterial Filtration Efficiency F2101 >99% BFE
- OSHA Assigned Protection Factor (APF) 10
- Australia TGA approved

| Packaging                          | Product Code | 3M Order Code |
|------------------------------------|--------------|---------------|
| 20 Respirator/box,<br>6 boxes/case | 1870+        | GT500073009   |

## Fitting Instructions

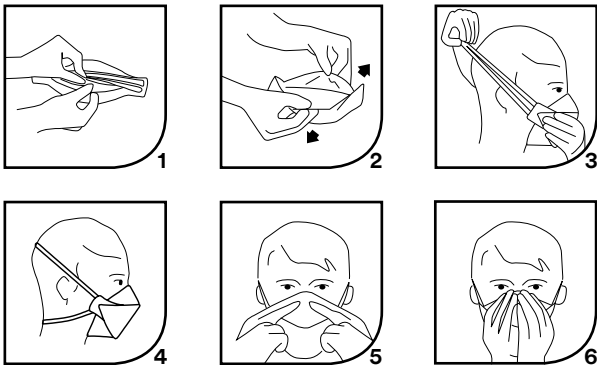
**Must be followed each time the respirator is worn. Before fitting device, ensure hands are clean.**

See Figure 1 below.

All respirator components should be inspected for damage prior to each use.

1. With reverse side up and using the tab, separate top and bottom panels to form a cup shape. Bend slightly at centre of the nose clip.
2. Ensure both panels are fully unfolded.
3. Cup respirator in one hand with open side towards face. Take both straps in other hand. Hold respirator under chin, with nose piece up, and pull straps over head.
4. Locate the upper strap across the crown of the head and the lower strap below the ears. Straps must not be twisted. Adjust top and bottom panels for comfortable fit, ensuring panels and chin tab are not folded in.
5. Using both hands, mould nose clip to the shape of the lower part of the nose to ensure a close fit and good seal. Pinching the nose clip using only one hand may result in less effective respirator performance - use two hands.
6. The seal of the respirator on the face should be fit checked before entering the workplace

Figure 1



### Warning

Respirators must not be used until your employer has determined whether usage will be in accordance with manufacturers instructions. The wearer must be trained in the proper fitting and use of this product. Failure to follow all instructions and warnings on the use of this product and/or failure to wear this respirator during all times of exposure can reduce respirator effectiveness and result in illness or death. All respirators should be used in accordance with Australian standard AS/NZS 1715. It is recommended that fit testing be conducted before assigning a respirator to an individual. If you cannot achieve a proper fit, do not enter contaminated areas. Do not use with beards or other facial hair or conditions that prevent a good seal between the face and the sealing surface of the respirator.

### Important Notice

To the extent permitted by law, 3M shall not be liable for any loss or damage including any loss of business, loss of profits, or for any indirect, special, incidental or consequential loss or damage arising from reliance upon any information herein provided by 3M. Nothing in this statement will be deemed to exclude or restrict 3M's liability for death or personal injury arising from its negligence.



**3M Australia Pty Ltd**  
**Personal Safety Division**  
 Bldg A, 1 Rivett Road  
 North Ryde NSW 2113

TechAssist Helpline 1800 024 464  
 Customer Service 1300 363 565  
 Email techassist@mmm.com  
 Web www.3M.com.au/ppesafety

**3M New Zealand Ltd**  
**Personal Safety Division**  
 94 Apollo Drive, Rosedale  
 Auckland 0632

TechAssist Helpline 0800 364 357  
 Customer Service 0800 252 627  
 Email 3mzntb@mmm.com  
 Web www.3m.com.nz/ppesafety

3M is a trademark of 3M.  
 © 3M 2018. All rights reserved.  
 AV011466099

## ⚠ Warnings and Use Limitations

Always be sure that the complete product is:

- Suitable for the application;
  - Fitted correctly;
  - Worn during all periods of exposure;
  - Replaced when necessary.
- It is recommended that fit testing be conducted before assigning a respirator to an individual. If you cannot achieve a proper fit then do not enter contaminated area. See your supervisor.
  - Inspect respirator before each use to ensure it is in good working condition. Examine all the respirator parts for signs of damage including the two straps, noseclip, nose foam and staples. The respirator should be disposed of immediately upon observation of damaged or missing parts. The respirator should be disposed of immediately upon observation of damaged or missing parts.
  - Leave the contaminated area immediately and contact supervisor if dizziness, irritation or other distress occurs.
  - Dispose of used product in accordance with applicable regulations.
  - All respirators should be used in accordance with local regulations.
  - Do not alter, repair, wash, and abuse or misuse the respirator.
  - Do not use with beards or other facial hair or conditions that prevent a good seal between the face and the sealing edge of the respirator.
  - The respirator can help protect the wearer's lungs against certain airborne contaminants; however, it will not prevent entry through other routes such as the skin or eyes, which would require additional personal protective equipment (PPE).
  - The respirator is designed for occupational/professional use by adults who are properly trained in it's use and limitations. The respirator is not designed to be used by children.
  - Individuals with a compromised respiratory system, such as asthma or emphysema, should consult a physician and complete a medical evaluation prior to use.
  - Maximum Operating Temperature: +50 degrees Celsius.
  - The filtration efficiency of the respirator may decrease in the presence of oily mists.

## Storage and Transportation

Shelf life of the unopened product is five (5) years from date of manufacture when stored within temperature range of -20°C to +30°C and at less than 80% relative humidity. End of shelf life date is marked on the product packaging. Before initial use, always check that the product is within the stated shelf life. When storing or transporting this product use original packaging provided.