



Filtek™

Supreme Ultra Universal Restorative

Technique Guide

[MENU >](#)



Technique Guide

We want you to get the best results using 3M™ Filtek™ Supreme Ultra Universal Restorative in your restorative procedures. That's why we've created this interactive Technique Guide. In it, you'll find a list of indications and simple technique guides for the most commonly performed procedures. Each guide has step-by-step illustrations and easy instructions that are important to know in advance of the procedure.

Menu

Click or tap to jump to the desired technique.

Indications	3
Technique Guides	
Anterior Multishade	4
Anterior Simple.....	5
Posterior Dual Shade	6
Posterior Single.....	7

Indications

- Direct anterior and posterior restorations (including occlusal surfaces)
- Core Build-ups
- Splinting
- Indirect restorations including inlays, onlays and veneers



Anterior Multishade*

Shades	Increment Depth	All Halogen and LED Lights (with output of 400–1000 mW/cm ²)	3M™ Elipar™ LED Curing Lights (with output 1000–2000 mW/cm ²)
Body, Enamel, Translucent	2 mm	20 sec.	10 sec.
Dentin, A6B and B5B	1.5 mm	40 sec.	20 sec.



①

Preparation:

- Select tooth shade using the VITAPAN® classical shade guide
- Select three composite shades using the 3M™ Filtek™ Supreme Ultra Universal Restorative Shade Selector as a guide
- Prepare the tooth
- Bevel enamel margins



②

Bonding procedure:

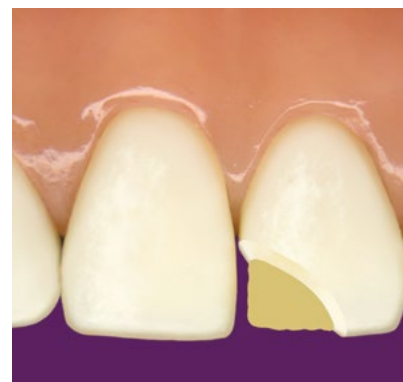
- Follow the bonding procedure provided in the Instructions for Use of the adhesive system of choice



③

Place composite—dentin replacement:

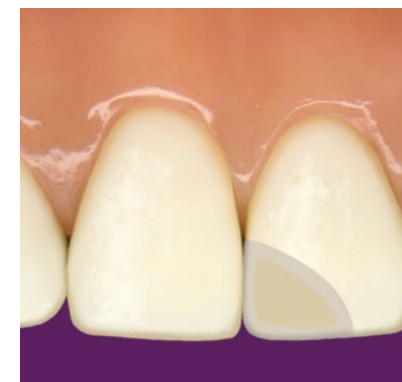
- Place and cure Dentin shade of Filtek Supreme Ultra restorative to provide opacity and color intensity
- Light cure



④

Place composite—enamel replacement:

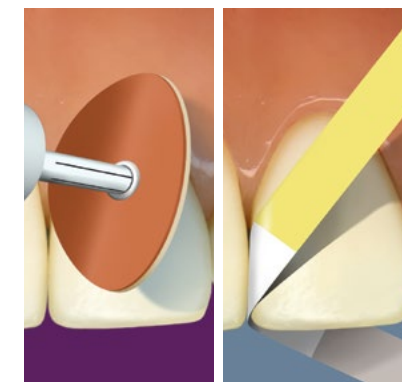
- Place and cure Body shade of Filtek Supreme Ultra restorative to the dentin enamel junction
- Light cure



⑤

Place composite—enamel replacement:

- Fill remaining preparation using Enamel and/or Translucent shades of Filtek Supreme Ultra restorative to provide translucency for depth of color and incisal edge match
- Light cure



⑥

Finish and polish:

- Use 3M™ Sof-Lex™ Finishing and Polishing Discs and Strips
- The aesthetic result will be enhanced by creating surface texture similar to the adjacent teeth

*Please refer to the Instructions for Use for more information.

Anterior Simple*

Shades	Increment Depth	All Halogen and LED Lights (with output of 400–1000 mW/cm ²)	3M™ Elipar™ LED Curing Lights (with output 1000–2000 mW/cm ²)
Body, Enamel, Translucent	2 mm	20 sec.	10 sec.
Dentin, A6B and B5B	1.5 mm	40 sec.	20 sec.



①

Preparation:

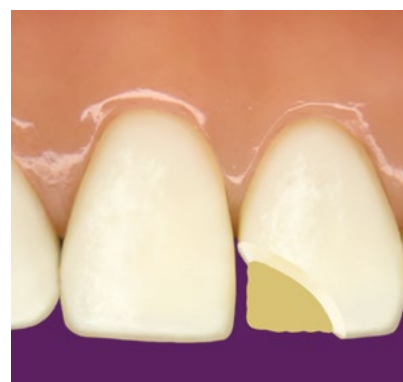
- Select tooth shade using the VITAPAN® classical shade guide
- Select two composite shades using the 3M™ Filtek™ Supreme Ultra Universal Restorative Shade Selector as a guide
- Prepare the tooth
- Bevel enamel margins



②

Bonding procedure:

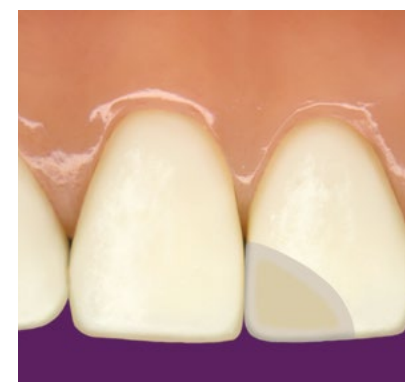
- Follow the bonding procedure provided in the Instructions for Use of the adhesive system of choice



③

Place composite—dentin replacement:

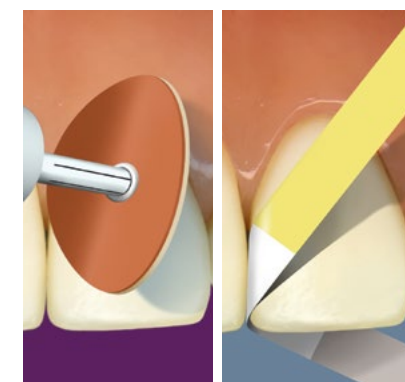
- Place and cure Body (or Dentin) shade of Filtek Supreme Ultra restorative in layers to the dentin enamel junction
- Light cure



④

Place composite—enamel replacement:

- Fill remaining preparation using the Body (or Enamel) shade of Filtek Supreme Ultra restorative
- Light cure



⑤

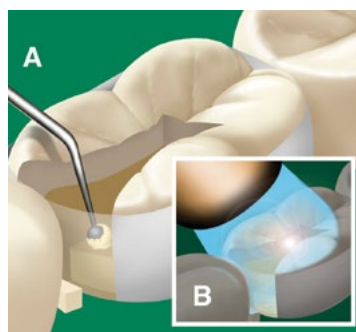
Finish and polish:

- Use 3M™ Sof-Lex™ Finishing and Polishing Discs and Strips
- The aesthetic result will be enhanced by creating surface texture similar to the adjacent teeth

*Please refer to the Instructions for Use for more information.

Posterior Dual Shade*

Shades	Increment Depth	All Halogen and LED Lights (with output of 400–1000 mW/cm ²)	3M™ Elipar™ LED Curing Lights (with output 1000–2000 mW/cm ²)
Body, Enamel, Translucent	2 mm	20 sec.	10 sec.
Dentin, A6B and B5B	1.5 mm	40 sec.	20 sec.



①

Preparation:

- Select shade using the VITAPAN® classical shade guide and the 3M™ Filtek™ Supreme Ultra Universal Restorative Shade Selector Wheel
- Prepare the tooth and isolate

Apply liner/base if desired:

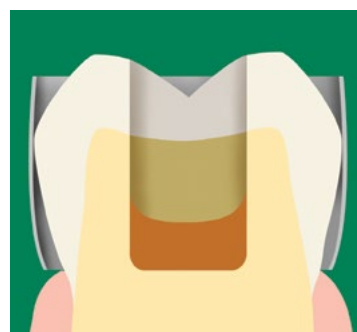
- Mix 3M™ Vitrebond™ or 3M™ Vitrebond™ Plus
- Apply a thin layer of the liner/base to dentin surfaces
- Light cure



②

Bonding procedure:

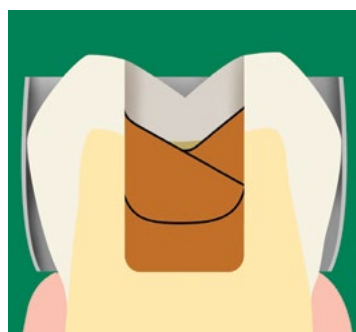
- Follow the bonding procedure provided in the Instructions for Use of the adhesive system of choice



③

Place composite—proximal box:

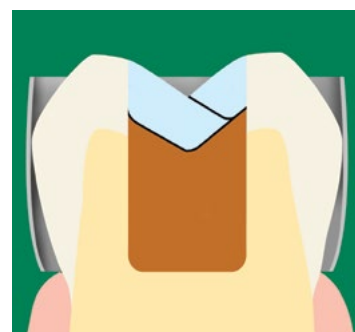
- To ensure good adaptation, place chosen Body (or Dentin) shade of Filtek Supreme Ultra restorative in a 1mm increment in the proximal box and on the floor of the cavity
- Light cure



④

Place composite—dentin replacement:

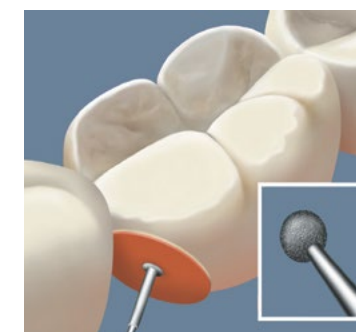
- Continue placing chosen Body (or Dentin) shade of Filtek Supreme Ultra restorative in increments to the DEJ
- Use remaining coronal tooth structure as a guide for placement and adaptation
- Light cure



⑤

Place composite—enamel replacement:

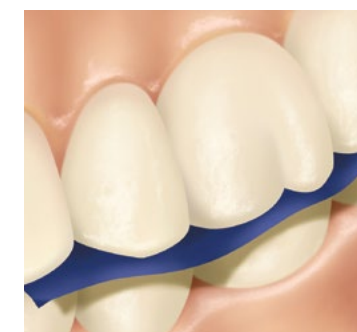
- Place chosen Enamel (or Translucent) shade of Filtek Supreme Ultra restorative in increments
- Use remaining coronal tooth structure as a guide for placement and adaptation
- Overfill slightly
- Light cure



⑥

Finish and polish:

- Finish occlusal surface using an appropriate finishing instrument
- Finish interproximal surfaces with 3M™ Sof-Lex™ Extra Thin Discs and 3M™ Sof-Lex™ Strips



⑦

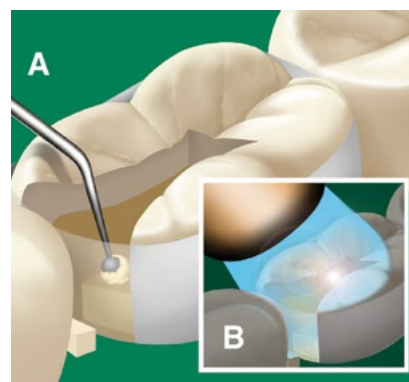
Occlusion:

- Check lateral and centric occlusion
- Adjust as necessary

*Please refer to the Instructions for Use for more information.

Posterior Single*

Shades	Increment Depth	All Halogen and LED Lights (with output of 400–1000 mW/cm ²)	3M™ Elipar™ LED Curing Lights (with output 1000–2000 mW/cm ²)
Body, Enamel, Translucent	2 mm	20 sec.	10 sec.
Dentin, A6B and B5B	1.5 mm	40 sec.	20 sec.



①

Preparation:

- Select shade using the VITAPAN® classical shade guide and the 3M™ Filtek™ Supreme Ultra Universal Restorative Shade Selector Wheel
- Prepare the tooth and isolate

Apply liner/base if desired:

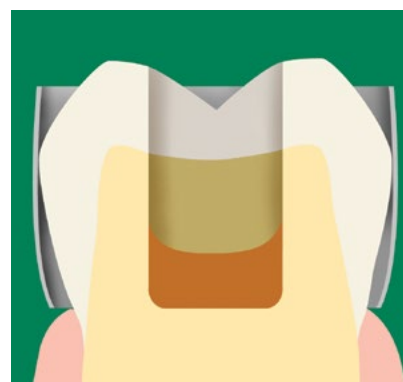
- Mix 3M™ Vitrebond™ or 3M™ Vitrebond™ Plus
- Apply a thin layer of the liner/base to dentin surfaces
- Light cure



②

Bonding procedure:

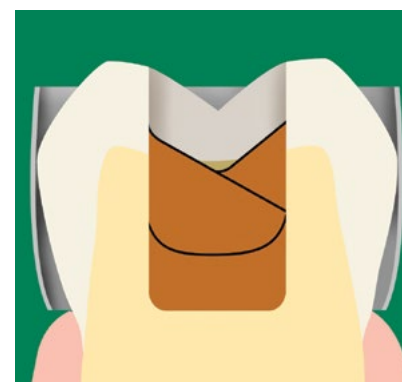
- Follow the bonding procedure provided in the Instructions for Use of the adhesive system of choice



③

Place composite—proximal box:

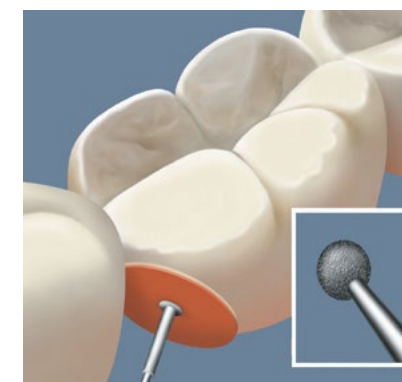
- To ensure good adaptation, place chosen Body shade of Filtek Supreme Ultra restorative in a 1 mm increment in the proximal box and on the floor of the cavity
- Light cure



④

Place composite:

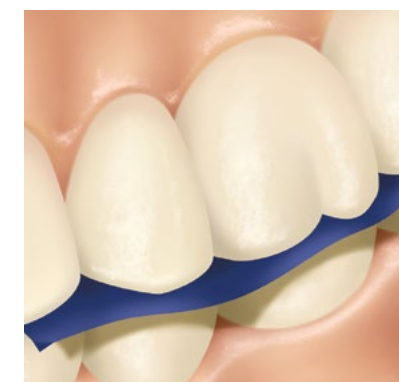
- Continue placing chosen Body shade of Filtek Supreme Ultra restorative in increments
- Use remaining coronal tooth structure as a guide for placement and adaptation
- Overfill slightly
- Light cure



⑤

Finish and polish:

- Finish occlusal surface using an appropriate finishing instrument
- Finish interproximal surfaces with 3M™ Sof-Lex™ Extra Thin Discs and 3M™ Sof-Lex™ Strips



⑥

Occlusion:

- Check lateral and centric occlusion
- Adjust as necessary

*Please refer to the Instructions for Use for more information.



www.3M.com/FiltekSupremeUltra

3M Oral Care
2510 Conway Avenue
St. Paul, MN 55144-1000 USA
Phone 1-800-634-2249
Web 3M.com/dental

3M Canada
Post Office Box 5757
London, Ontario N6A 4T1
Canada
Phone 1-888-363-3685

3M, Elipar, Filtek, Sof-Lex and Vitrebond are all trademarks of 3M or 3M Deutschland GmbH. Used under license in Canada. © 3M 2017. All rights reserved. VITAPAN is a trademark of VITA North America and not of 3M.