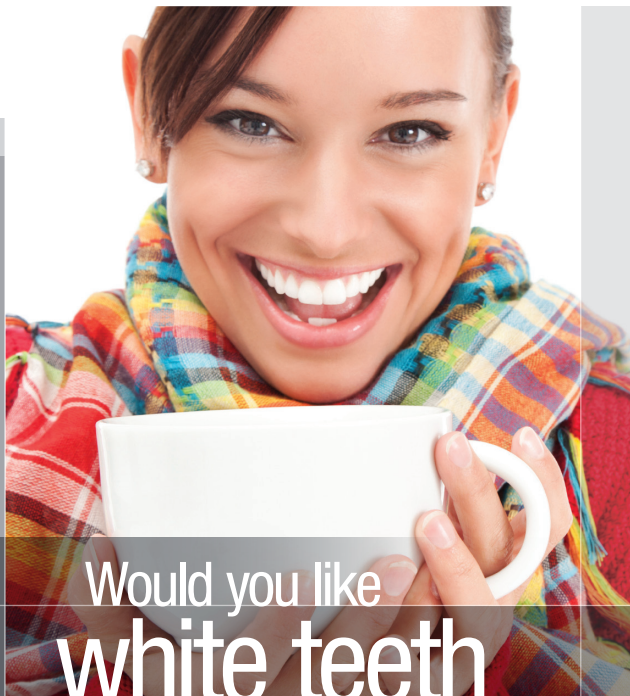


White & Brite

Tooth Whitening System



Would you like
white teeth
with that?

3M ESPE

Professionally supervised tooth whitening...



Before



After

...the change can be dramatic.

Tooth whitening treatments can dramatically change tooth colour, making teeth noticeably whiter as seen above. But that is only one of the reasons why you should rely on your dental professional to help you achieve a whiter, brighter smile.

Are all whiteners the same?

There are many different types of whiteners and the strength of the ingredients can also differ significantly. “Paint on” whiteners, whitening “strips” and whitening gels are commonly used products. Whiteners available in drug stores may be lower strength versions and may be appropriate for some people. Your dental professional can help you decide what is right for you.

Are all whitening gels the same?

Whitening gels like the 3M™ ESPE™ White & Brite Tooth Whitening System are applied by wearing custom fitted mouth trays. Your dental professional will take impressions of your upper and lower teeth to make these custom trays, which help insure that the trays fit properly. Tray systems available in drug stores may not fit as well. Ill-fitting trays can lead to gum irritation.

Are all whiteners the same strength?

There are a variety of different strength whiteners available. Dental professionals are trained to determine what the best course of treatment is for your case.

How soon will you see results?

Many people see an improvement after just a few days of tooth whitening. The treatment plan and strength of whitening gel provided by your dental professional is based on the condition of your teeth when you begin. The goal is to provide the fastest results possible.

Can tooth-coloured fillings be whitened?

No. Whitening treatments cannot whiten tooth coloured fillings, crowned (capped) or veneered teeth. This is one more reason to seek the advice of a professional before using any whitening product. As part of your treatment plan, your dentist will advise you on esthetic options to ensure an overall beautiful smile.

How long will your teeth stay white?

With periodic touch-up applications and regular dental hygiene visits, your whiter, brighter smile can last for a long time.

Should you consider having your teeth professionally whitened?

White & Brite tooth whitening gel has been recommended by thousands of dental professionals since it was first introduced over 15 years ago. Professional tooth whitening has been shown to be a safe and effective way for millions of people to obtain a whiter, brighter smile. Ask your dental professional about White & Brite gel today.

Years of consuming coffee, tea, wine, soda, juices and other items gradually cause white teeth to discolour.

3M™ ESPE™ White & Brite Tooth Whitening Gel can help you bring back your bright, youthful smile.



Ask your dental professional about White & Brite gel today.

Customer Care Centre: 1-888-363-3685
3MESPE.ca

3M ESPE

Available through

3M Canada

Post Office Box 5757
London, Ontario N6A 4T1
Canada

Dental Products

2510 Conway Avenue
St. Paul, MN 55144-1000
USA

3M and ESPE are trademarks of
3M or 3M Deutschland GmbH.
Used under license in Canada.
© 2013, 3M. All rights reserved.

Please recycle. Printed in Canada.
1309-02431 E