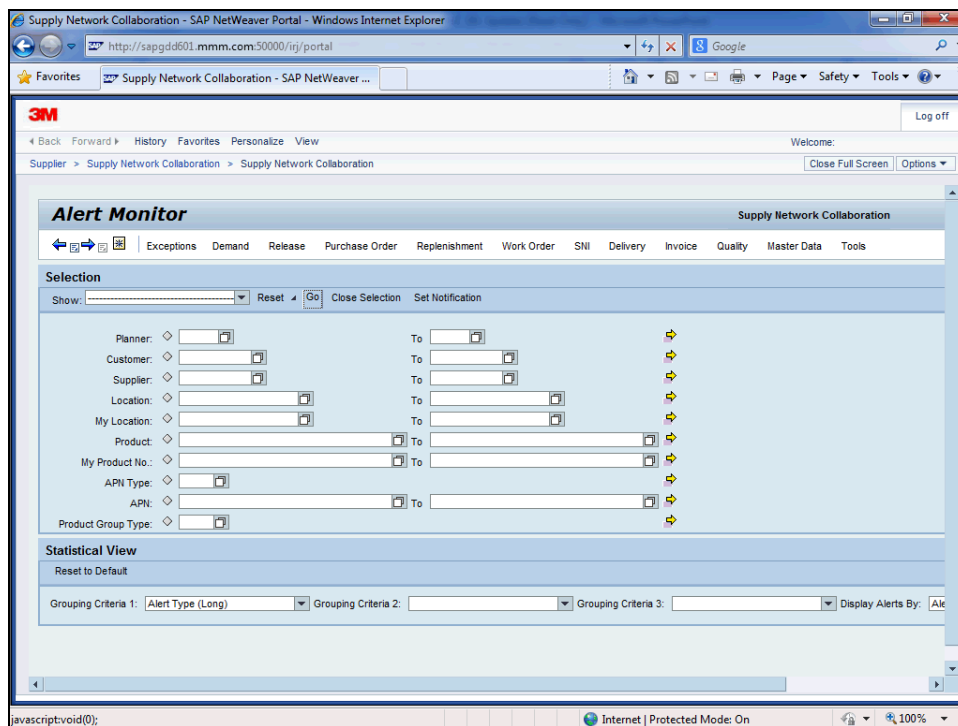
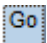


## Przeglądanie zapotrzebowania firmy 3M w szczegółach prognozy zlecenia PL

Użyj tego działania portalu dostawcy, aby wyświetlić prognozowane zapotrzebowania firmy 3M.

Step	Action
1.	Po zalogowaniu się do systemu SAP SNC wyświetla się ekran <i>Monitor alertów</i> (Alert Monitor).  W tym przykładzie pozostaw wszystkie kryteria <i>Wyboru</i> (Selection) puste, aby wyświetlić wszystkie alerty.





Step	Action
2.	Kliknij przycisk <b>Go</b> . 
3.	Przewiń w dół, aby wyświetlić alerty.

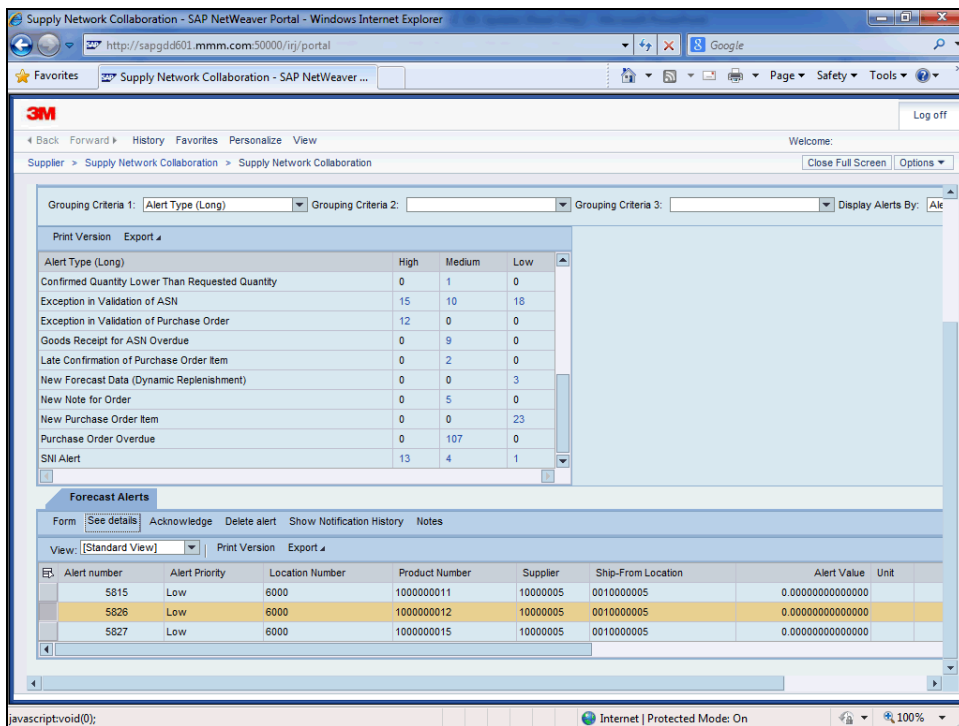
Step	Action
4.	Kliknij pasek przewijania <b>Vertical</b> .
5.	W sekcji <i>Widok statystyczny</i> (Statistical View) przewiń w dół do pozycji <b>Nowe dane prognozowania</b> (New Forecast Data).  Aby wyświetlić dane prognozowania, kliknij link numeru w kolumnie statusu <b>Typ alertu</b> (Alert Type): <b>Wysoki</b> (High), <b>Średni</b> (Medium) lub <b>Niski</b> (Low).
6.	Kliknij pasek przewijania <b>Vertical</b> .
7.	W tym przykładzie występują 3 elementy typu <b>Niski</b> (Low) i nie występuje żaden element typu <b>Wysoki</b> (High) ani <b>Średni</b> (Medium).

The screenshot shows the 'Alert Monitor' interface in the SAP NetWeaver Portal. The 'Statistical View' section is active, displaying a table of alert statistics. The table has columns for 'Alert Type (Long)', 'High', 'Medium', and 'Low'. The 'New Forecast Data (Dynamic Replenishment)' row is highlighted, showing 0 High, 0 Medium, and 5 Low alerts. Other rows include 'Confirmed Quantity Lower Than Requested Quantity', 'Exception in Validation of ASN', 'Exception in Validation of Purchase Order', 'Goods Receipt for ASN Overdue', 'Late Confirmation of Purchase Order Item', 'New Note for Order', 'New Purchase Order Item', 'Purchase Order Overdue', and 'SNI Alert'.

Alert Type (Long)	High	Medium	Low
Confirmed Quantity Lower Than Requested Quantity	0	1	0
Exception in Validation of ASN	15	10	18
Exception in Validation of Purchase Order	12	0	0
Goods Receipt for ASN Overdue	0	9	0
Late Confirmation of Purchase Order Item	0	2	0
New Forecast Data (Dynamic Replenishment)	0	0	5
New Note for Order	0	5	0
New Purchase Order Item	0	0	23
Purchase Order Overdue	0	107	0
SNI Alert	13	4	1

Step	Action
8.	Kliknij obiekt <b>3</b> . 
9.	Przewiń w dół, aby wyświetlić listę nowych alertów prognozowania.

Step	Action
10.	Kliknij pasek przewijania <b>Vertical</b> .
11.	Zlokalizuj i wybierz alert prognozowania do wyświetlenia.
12.	Kliknij nagłówek rzędu. 



Supply Network Collaboration - SAP NetWeaver Portal - Windows Internet Explorer

http://sapgd601.mmm.com:50000/ig/portal

3M Log off

Welcome:

Supplier > Supply Network Collaboration > Supply Network Collaboration

Grouping Criteria 1: Alert Type (Long) Grouping Criteria 2: Grouping Criteria 3: Display Alerts By: All

Print Version Export

Alert Type (Long)	High	Medium	Low
Confirmed Quantity Lower Than Requested Quantity	0	1	0
Exception in Validation of ASN	15	10	18
Exception in Validation of Purchase Order	12	0	0
Goods Receipt for ASN Overdue	0	9	0
Late Confirmation of Purchase Order Item	0	2	0
New Forecast Data (Dynamic Replenishment)	0	0	3
New Note for Order	0	5	0
New Purchase Order Item	0	0	23
Purchase Order Overdue	0	107	0
SNI Alert	13	4	1

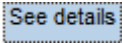
Forecast Alerts

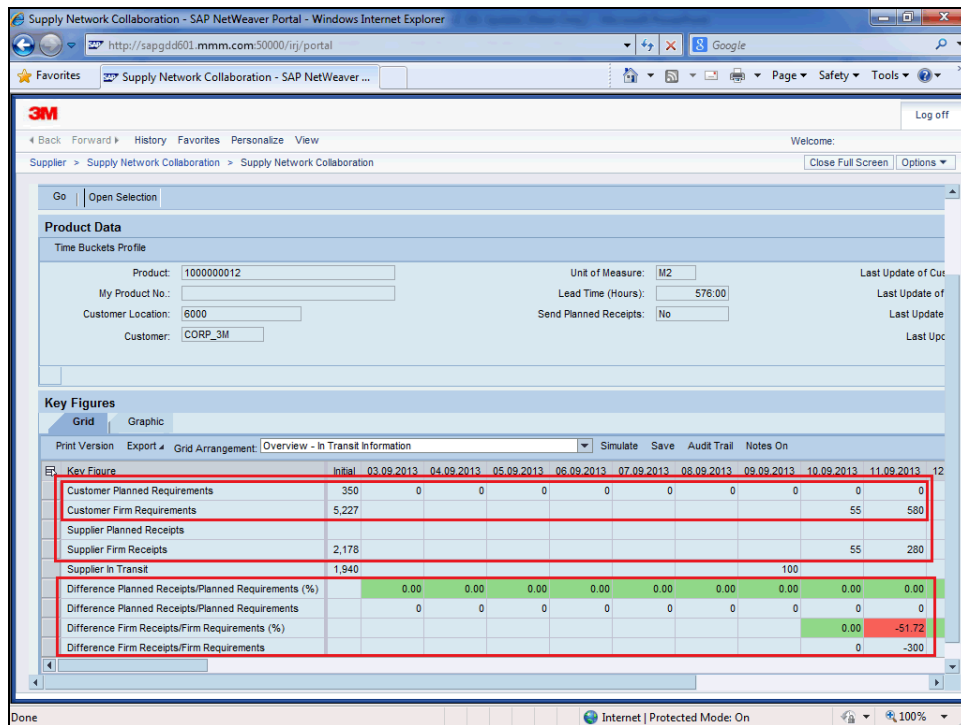
Form: [See details](#) Acknowledge Delete alert Show Notification History Notes

View: Standard View Print Version Export

Alert number	Alert Priority	Location Number	Product Number	Supplier	Ship-From Location	Alert Value	Unit
5815	Low	6000	100000011	10000005	0010000005	0.0000000000000000	
5826	Low	6000	100000012	10000005	0010000005	0.0000000000000000	
5827	Low	6000	100000015	10000005	0010000005	0.0000000000000000	

Internet | Protected Mode: On 100%

Step	Action
13.	Kliknij przycisk <b>See details</b> . 
14.	Zostaną wyświetlone informacje prognozowania. Przewiń w prawo, aby wyświetlić więcej informacji.



Step	Action
15.	Kliknij pasek przewijania <b>Horizontal</b> .
16.	Kliknij pasek przewijania <b>Horizontal</b> .
17.	Przewiń z powrotem w lewo, aby wejść do kart.
18.	Kliknij pasek przewijania <b>Horizontal</b> .
19.	Wyświetl informacje w formie diagramu.

Supply Network Collaboration (Supplier View) - Windows Internet Explorer

http://sapgd1502.mmm.com:8000/sap/bc/webdynpro/srf/snc\_s?sap-language=EN

Order Forecast Details - Product View

Supply Network

Exceptions Demand Release Purchase Order Replenishment Work Order SMI Delivery Invoice Quality Master Data Tools

Selection Area

Go Open Selection

Product Data

Time Buckets Profile

Product: 1000000012 Unit of Measure: M2 Last Update of Customer: ...

My Product No.: ... Lead Time (Hours): 576.00 Last Update of Customer: ...

Customer Location: 6000 Send Planned Receipts: No Last Update of Supplier: ...

Customer: CORP\_3M Last Update of Supplier: ...

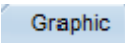
Key Figures

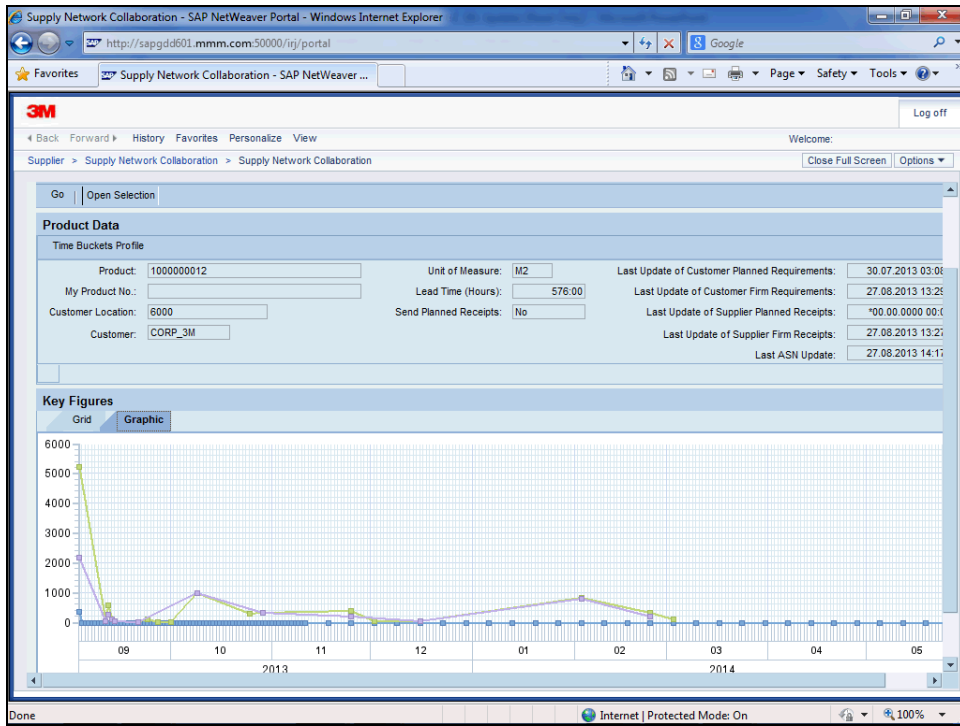
Grid Graphic

Print Version Export Grid Arrangement: Overview - In Transit Information Simulate Save Audit Trail Notes On

Key Figure	Initial	03.09.2013	04.09.2013	05.09.2013	06.09.2013	07.09.2013	08.09.2013	09.09.2013	10.09.2013	11.09.2013	12.09.2013
Customer Planned Requirements	350	0	0	0	0	0	0	0	0	0	0
Customer Firm Requirements	5,227								55	580	
Supplier Planned Receipts											
Supplier Firm Receipts	2,178								55	280	
Supplier In Transit	1,940							100			
Difference Planned Receipts/Planned Requirements (%)		0.00	0.00	0.00	0.00	0.00	0.00	0.00	0.00	0.00	
Difference Planned Receipts/Planned Requirements		0	0	0	0	0	0	0	0	0	
Difference Firm Receipts/Firm Requirements (%)									0.00	-51.72	
Difference Firm Receipts/Firm Requirements									0	-300	

Done Internet | Protected Mode: On 100%

Step	Action
20.	Kliknij tabulację <b>Graphic</b> . 
21.	Wyświetla się <i>Grafika</i> .



Step	Action
22.	Działanie zostało ukończone. <b>End of Procedure.</b>